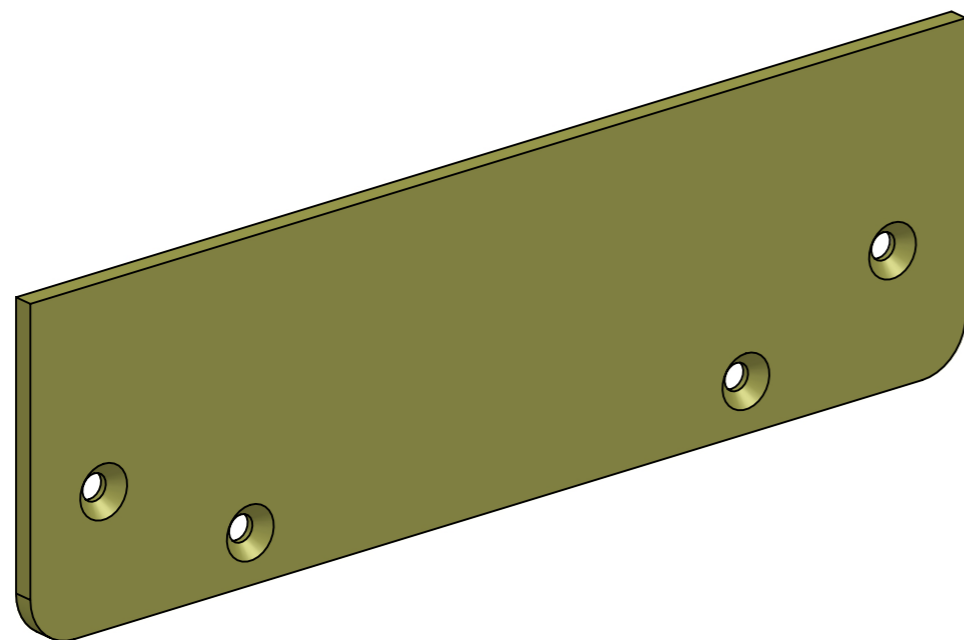
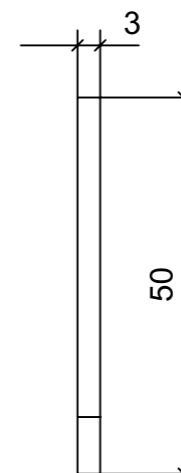
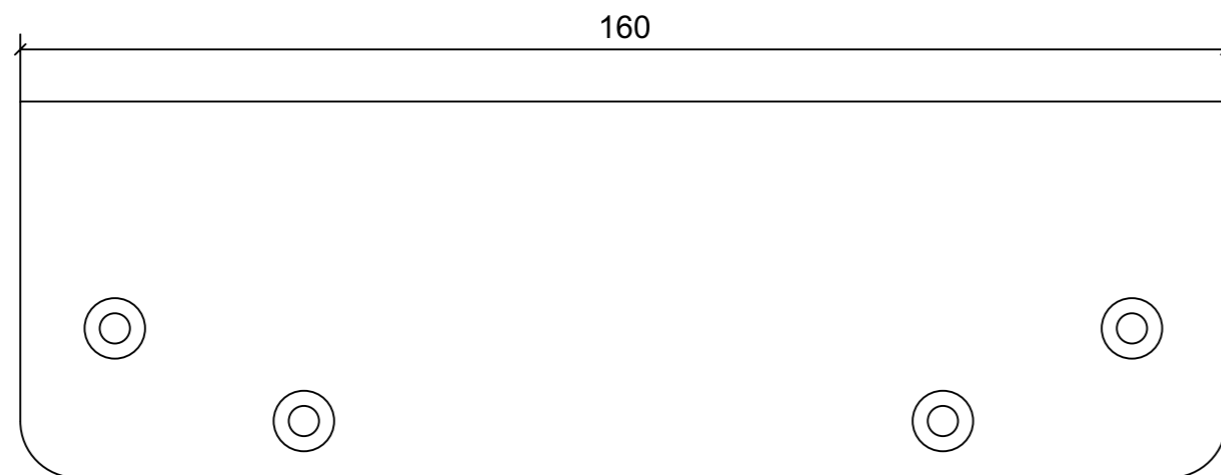
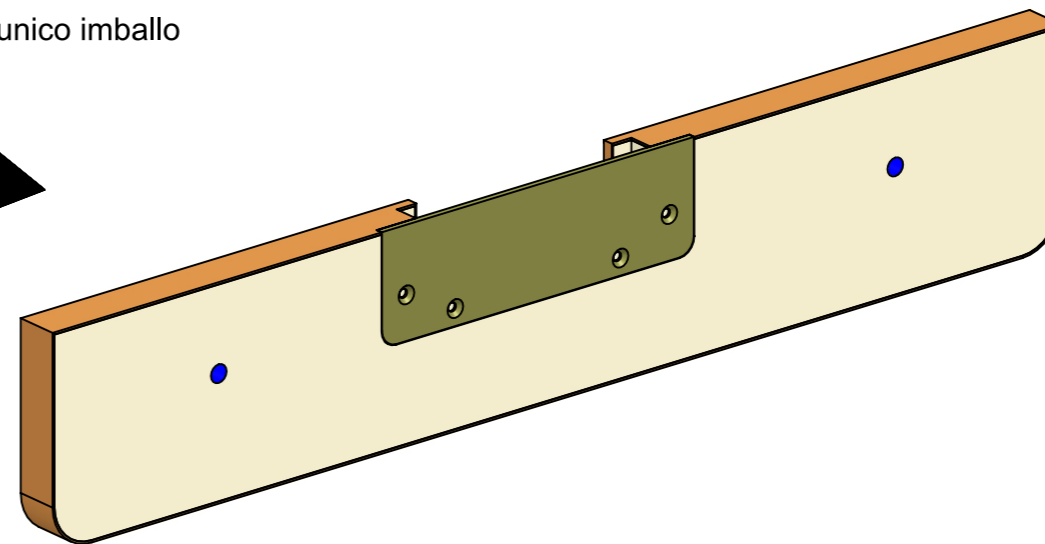


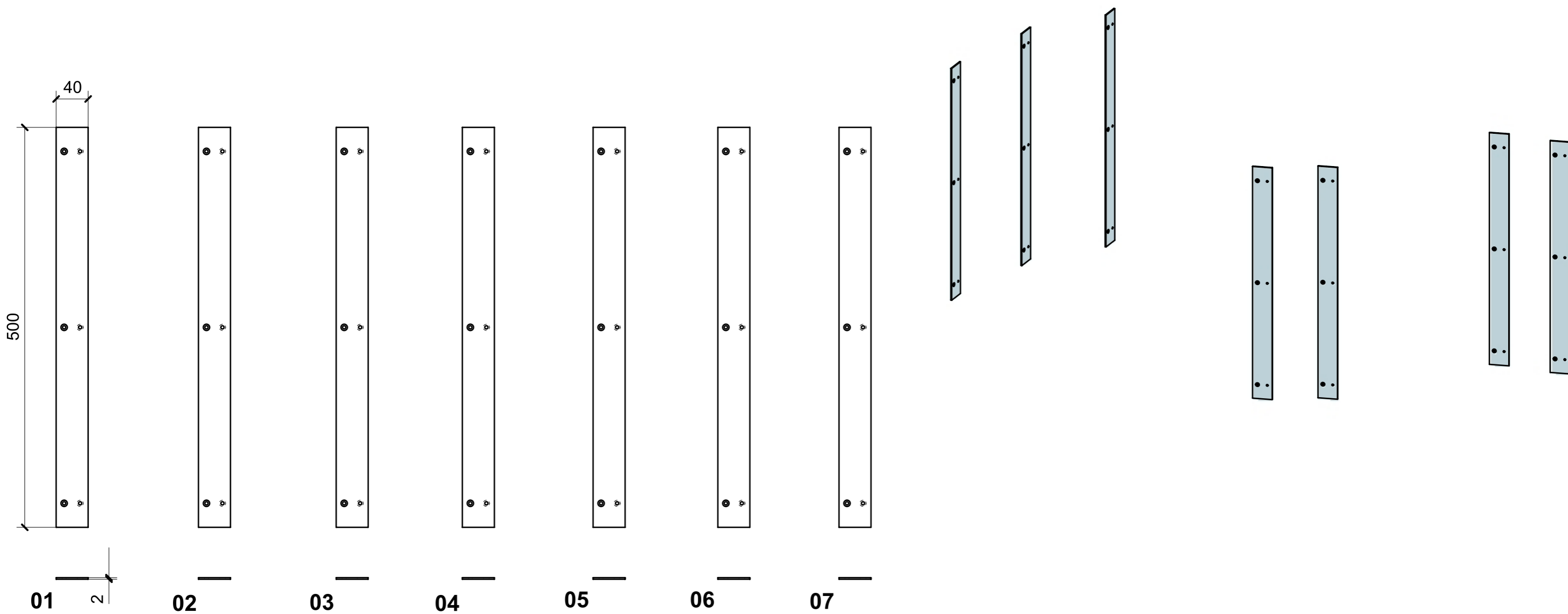
LOCALE	CODICE	DESCRIZIONE COMPONENTE	FINITURA	GR.
CABINA ARMATORE	MD320_A17_AB01	ARMADIO INGRESSO SX POPPA	ALLUMINIO VERN. BRONZO 88634	4



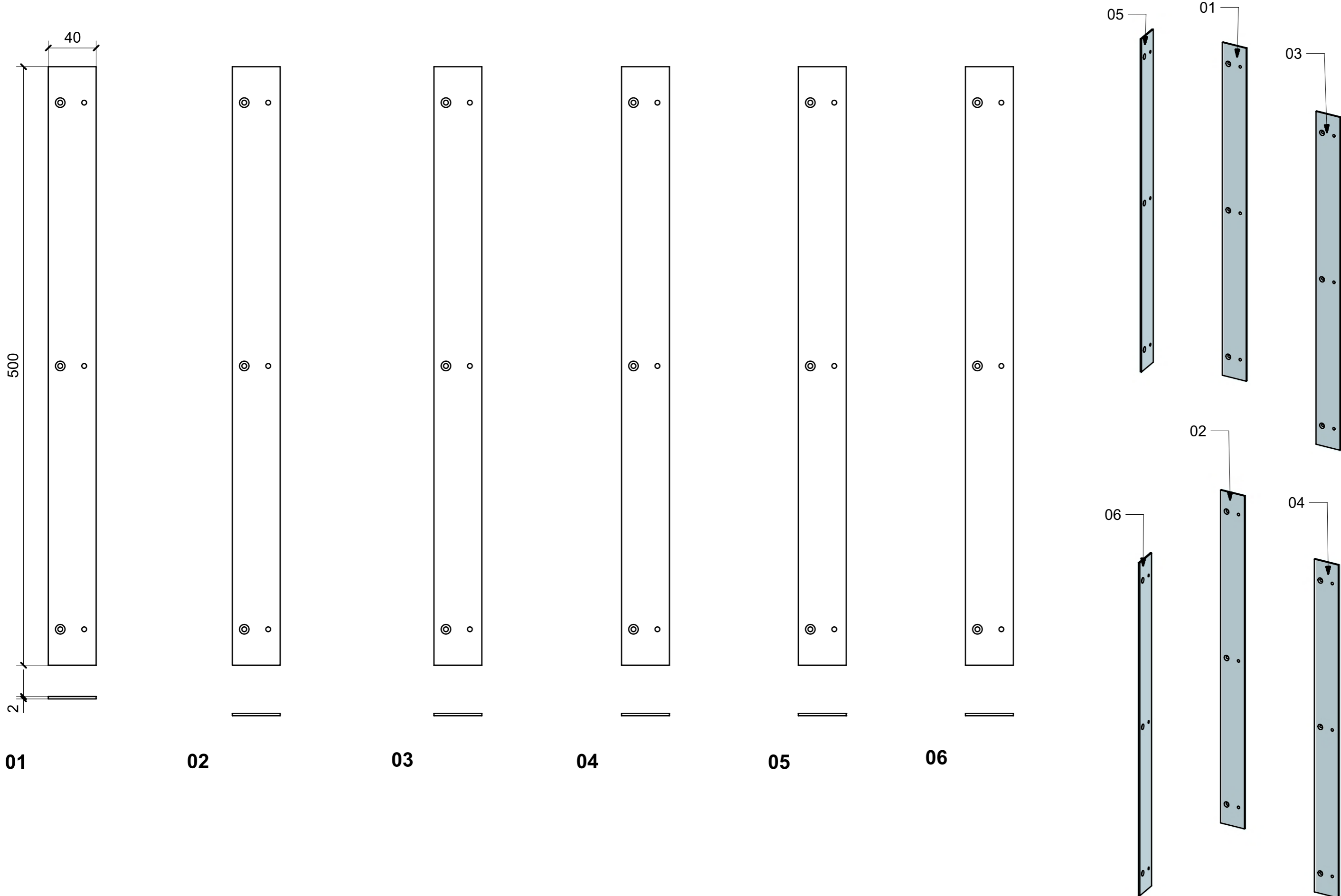
ELEMENTO DA MONTARE
in MF_AB01
e spedire con unico imballo



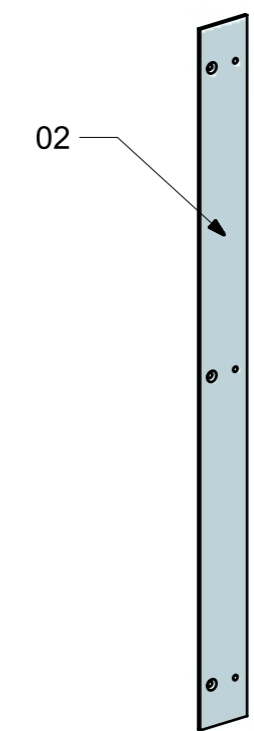
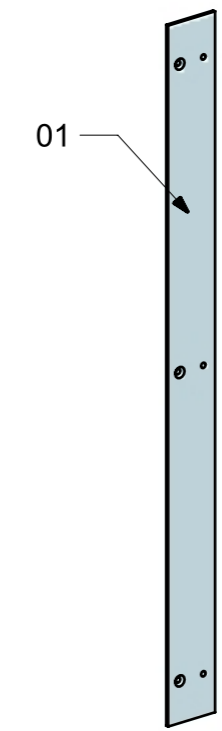
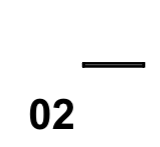
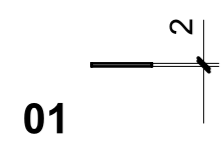
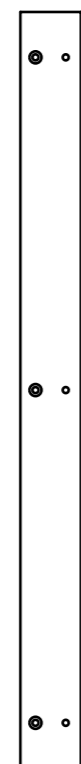
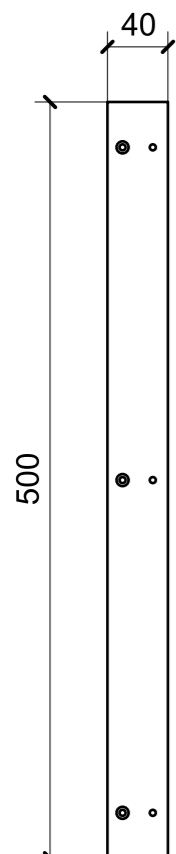
LOCALE	CODICE	DESCRIZIONE COMPONENTE	FINITURA	GR.
CABINA ARMATORE	MD320_A10_AC01	MURATA DX POPPA	ACCIAIO	3



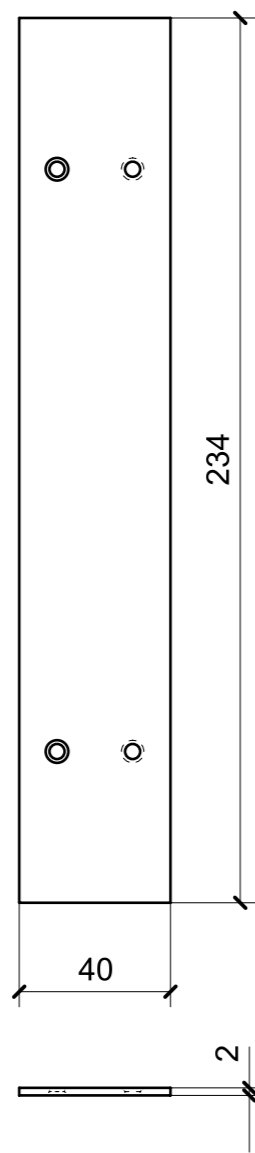
LOCALE	CODICE	DESCRIZIONE COMPONENTE	FINITURA	GR.
CABINA ARMATORE	MD320_A10_AD01	MURATA SX POPPA	ACCIAIO GREZZO	2



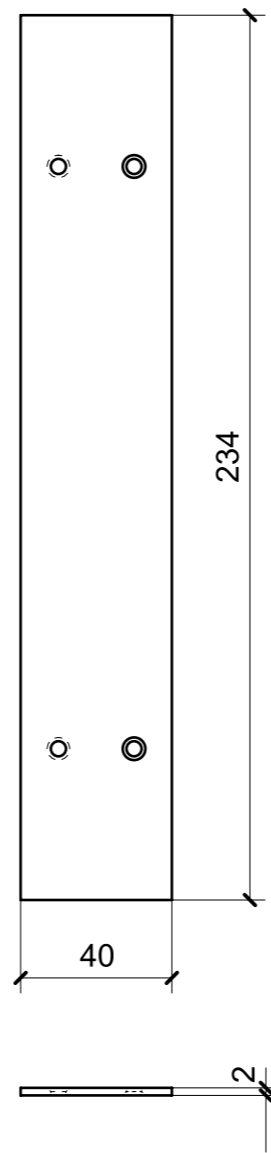
LOCALE	CODICE	DESCRIZIONE COMPONENTE	FINITURA	GR.
CABINA ARMATORE	MD320_A10_AG01	TESTATA LETTO	ACCIAIO GREZZO	3



LOCALE	CODICE	DESCRIZIONE COMPONENTE	FINITURA	GR.
CABINA ARMATORE	MD320_A19_AL01	LETTO	ACCIAIO	4



A19_01



A19_02



LOCALE	CODICE	DESCRIZIONE COMPONENTE	FINITURA	GR.
CABINA ARMATORE	MD320_A20_AQ01	CIELINO MURATA DX POPPA	ACCIAIO GREZZO	2

