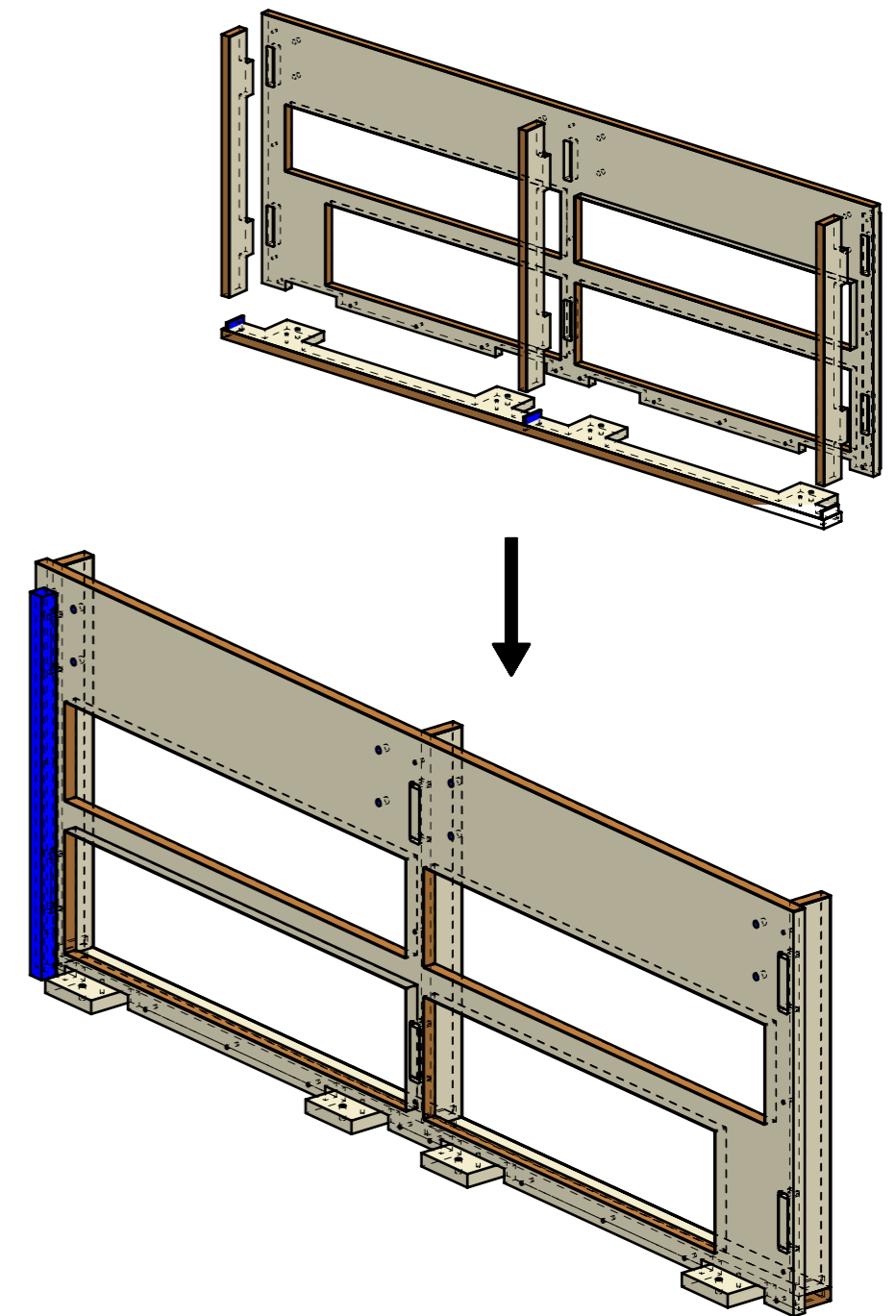
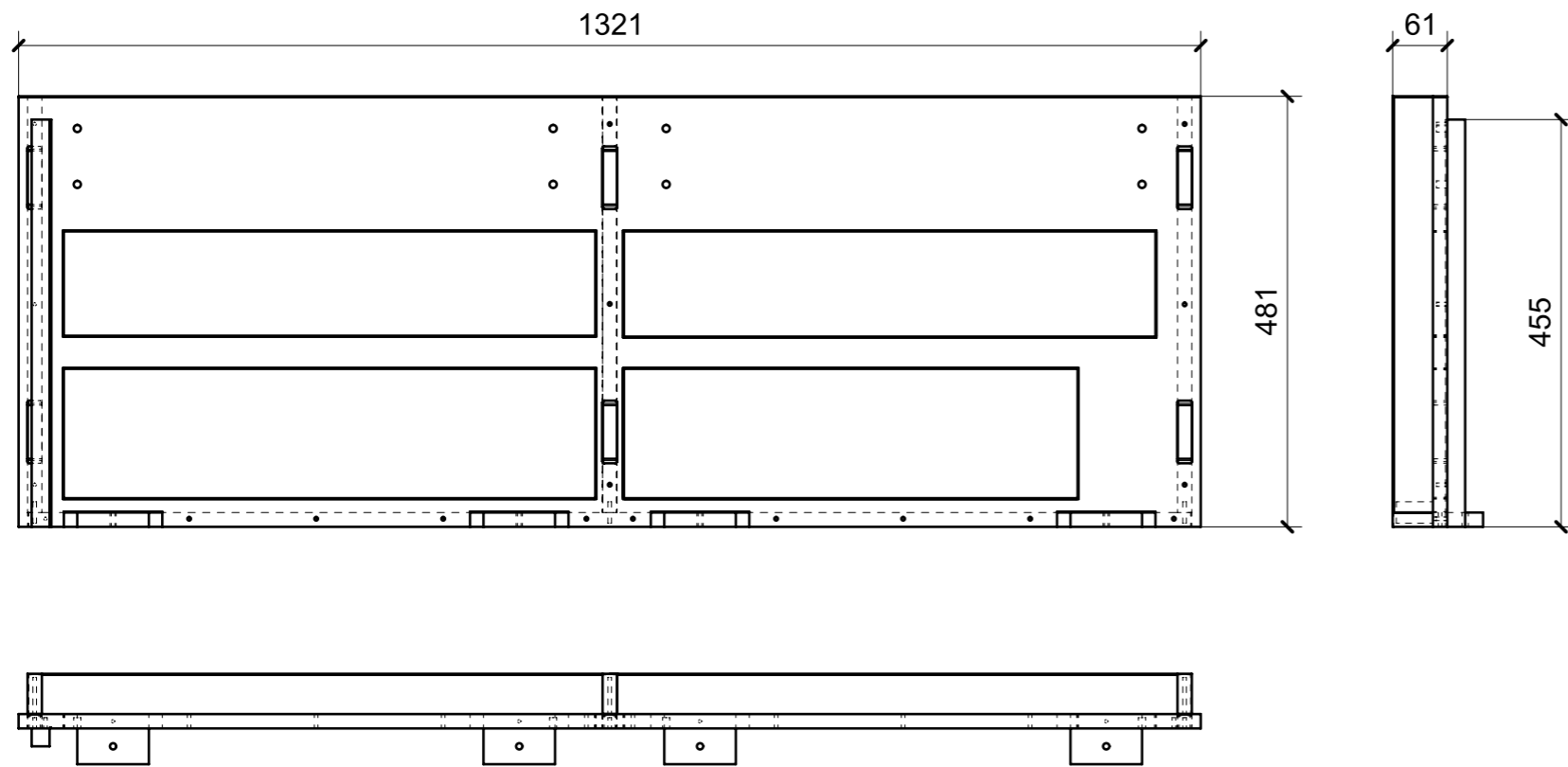


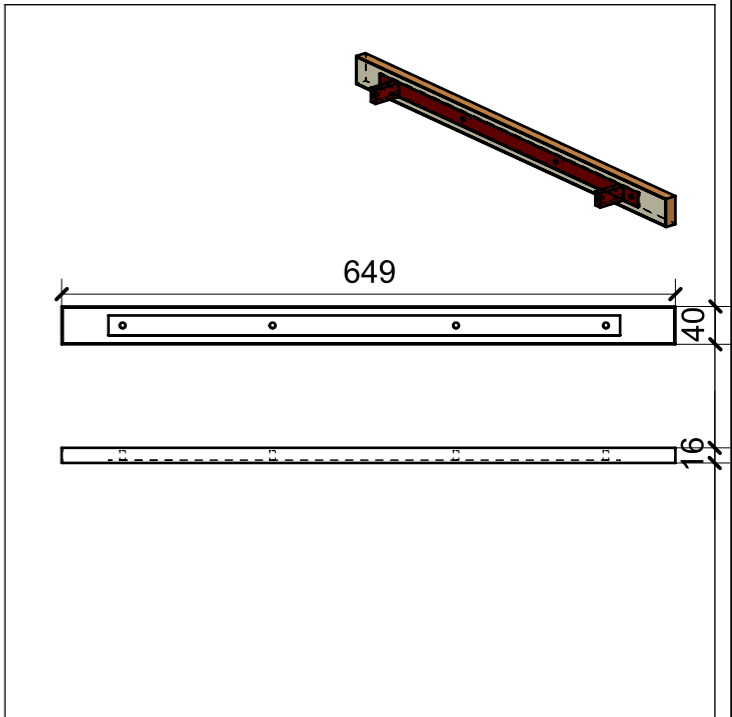
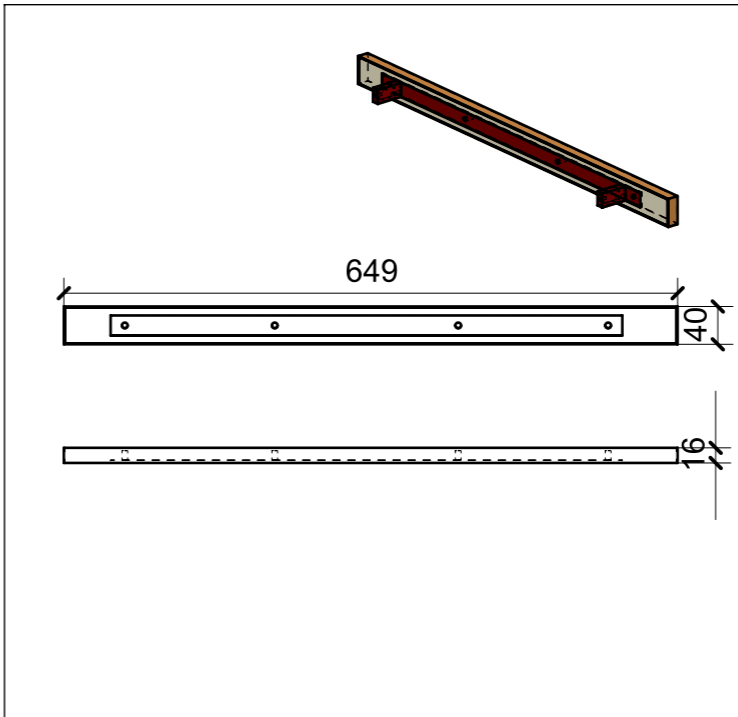
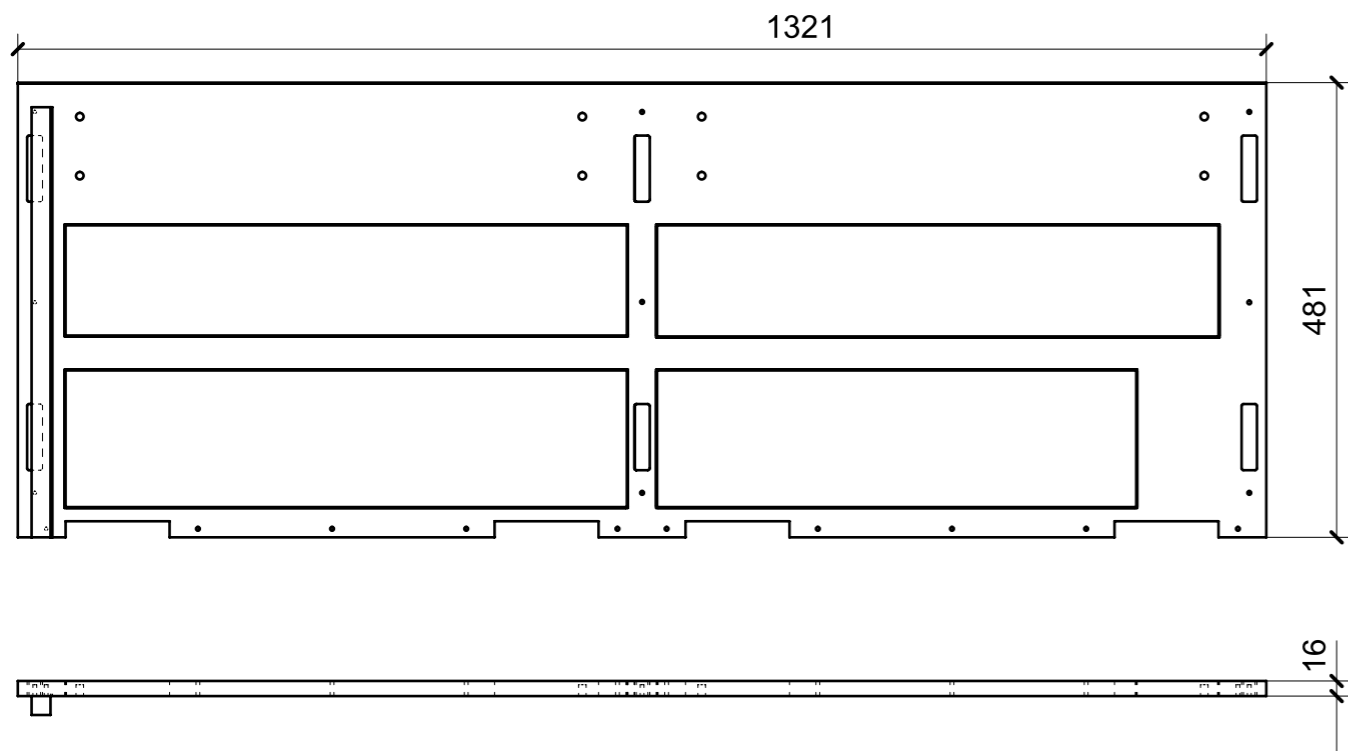
LOCALE	CODICE	DESCRIZIONE COMPONENTE	FINITURA	GR.
BAGNO ARMATORE	MD299_MG_WA01	MOBILE LAVABO	LASTRA SCURA	10



MG_WA01

FERRAMENTA	QTY
BUSSOLA 6MA X 10 FORO DIAM.8	8

LOCALE	CODICE	DESCRIZIONE COMPONENTE	FINITURA	GR.
BAGNO ARMATORE	MD299_R01_WA01	MOBILE LAVABO	LASTRA SCURA	10



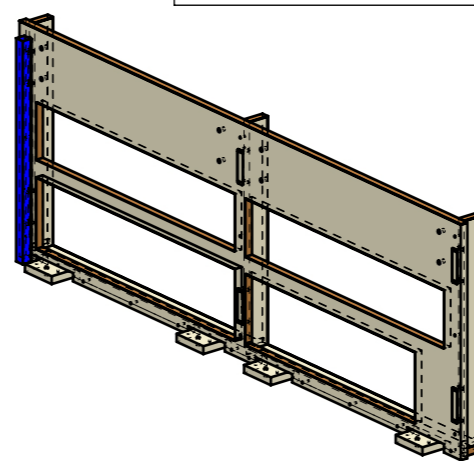
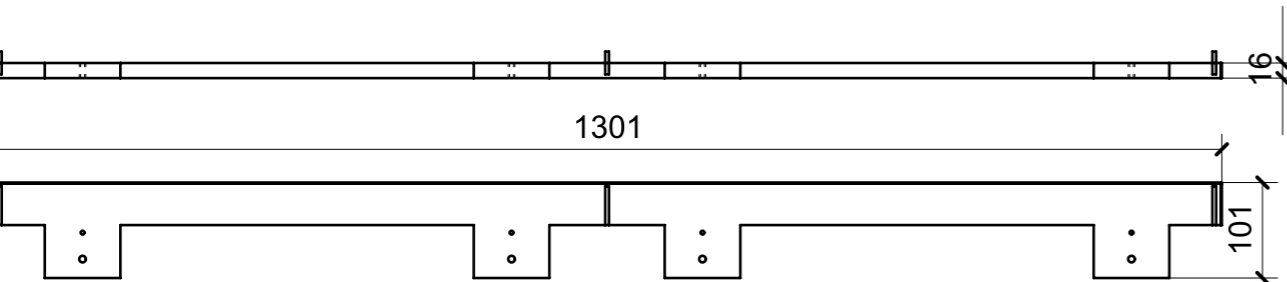
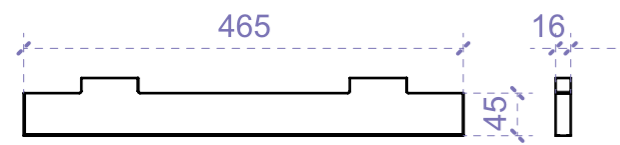
01

02

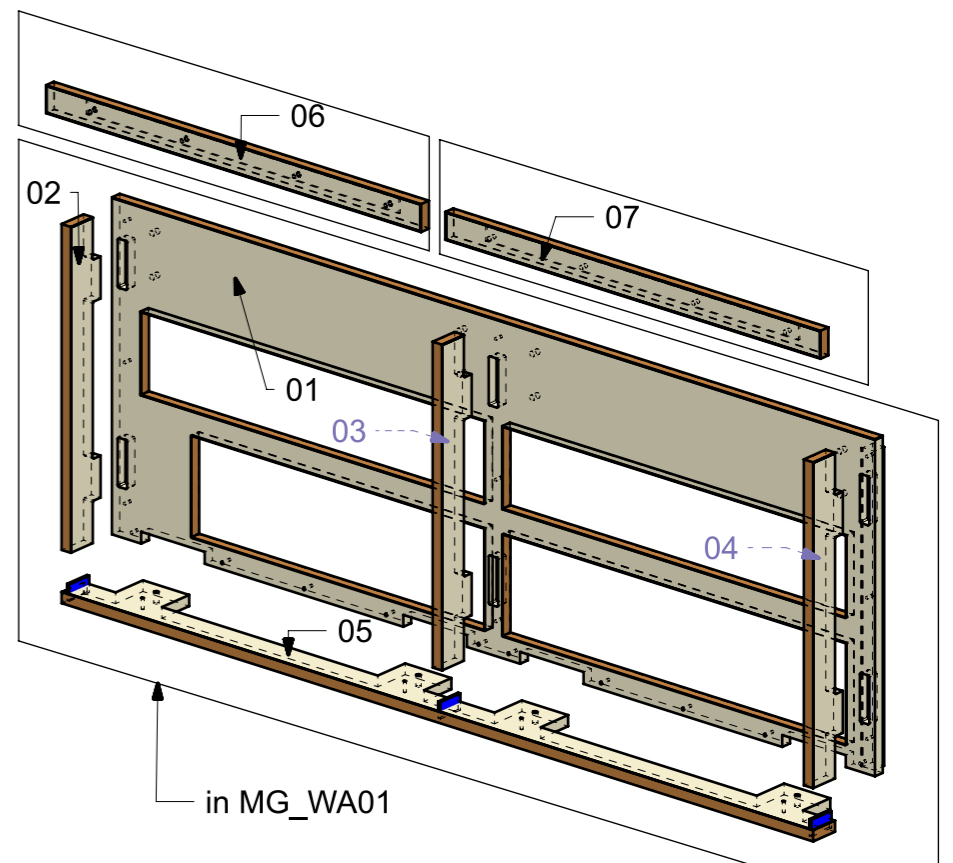
04

03

05



ELEMENTI DA MONTARE
in MG_WA01
e spedire con unico imballo



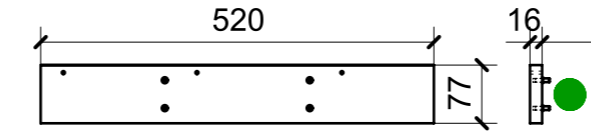
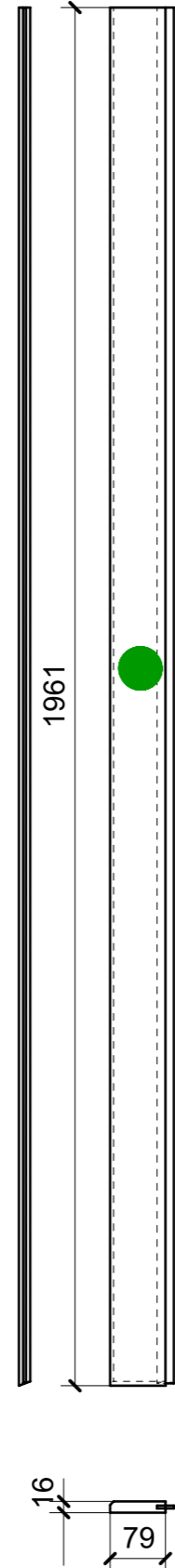
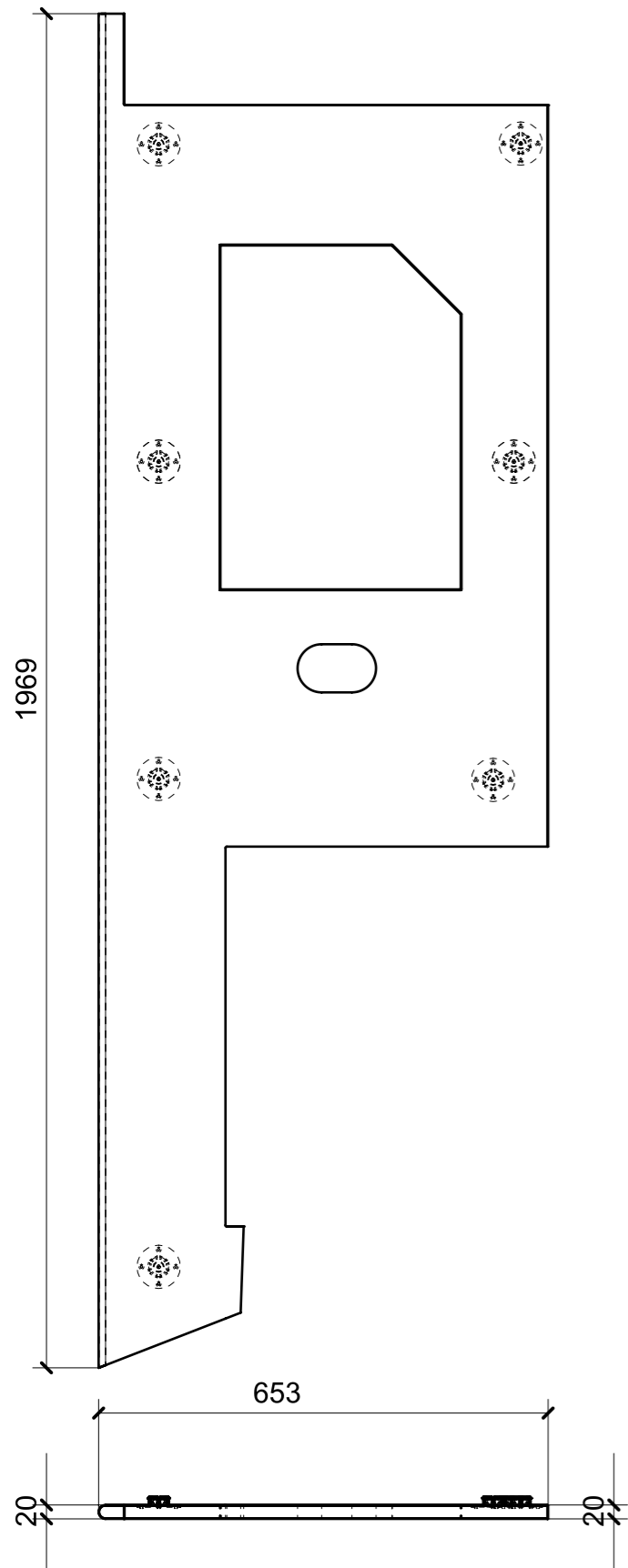
FERRAMENTA	QTY
BUSSOLA 6MA X 10 FORO DIAM.8	8
BUSSOLA 4MA X 10 FORO DIAM.6	8

VERNICIATURA LASTRA/LACCATI:

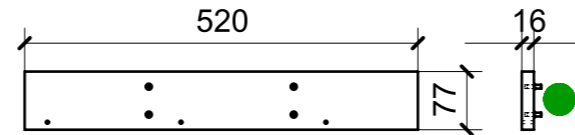
● = VERNICIARE 1 LATO + FILI RASATI O BORDATI

NESSUN SIMBOLO = VERNICIARE 2 LATI + FILI RASATI O BORDATI

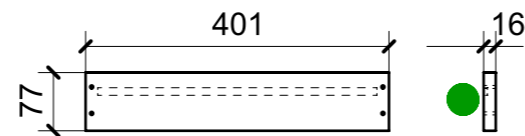
LOCALE	CODICE	DESCRIZIONE COMPONENTE	FINITURA	Q.TA
BAGNO ARMATORE	MD299_R01_WB01	PARETE SX	LASTRA SCURA	1



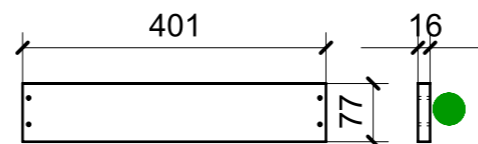
02



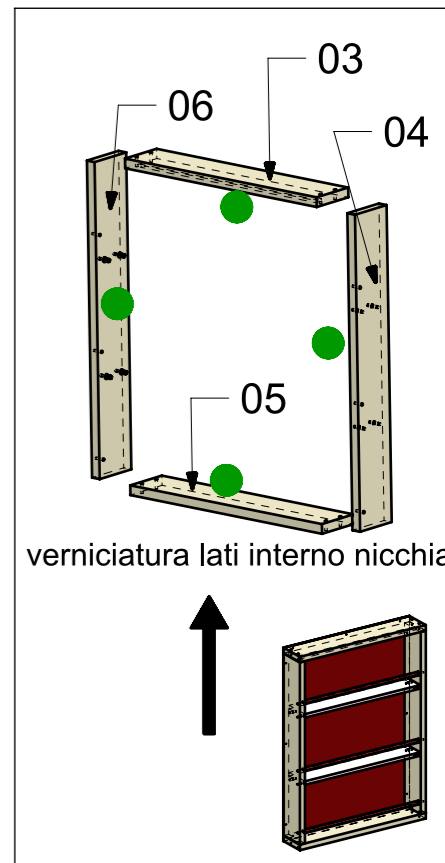
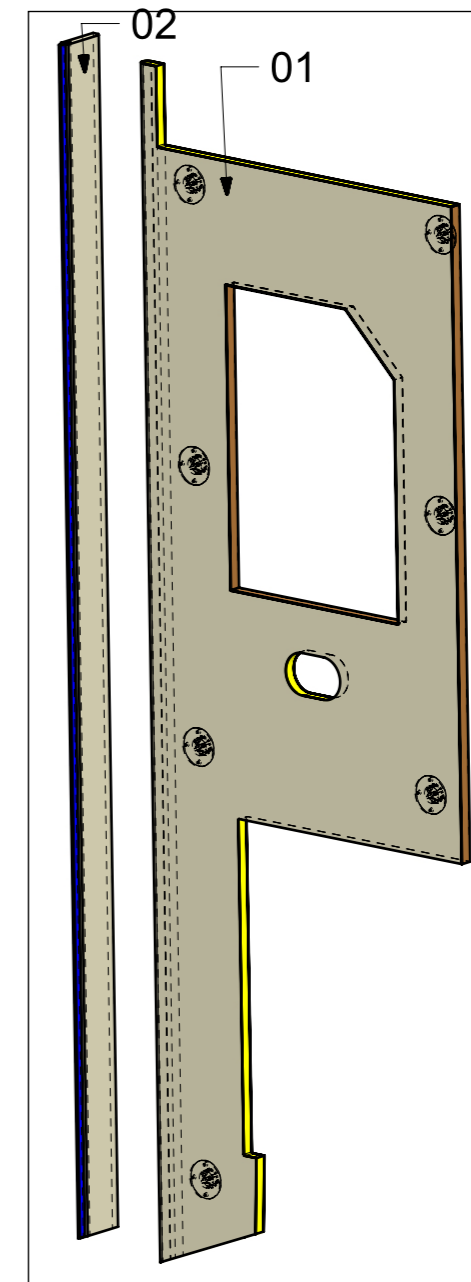
04



03



05



verniciatura lati interno nicchia

ELEMENTI DA MONTARE
con P01_01; A13-A15
in MF_WB01
e spedire con unico imballo

FERRAMENTA	QTY
REGGIRIPANO CILINDRO_FBC_	8
FITLOCK M_MASCHERPA_3MM_6020202101	7

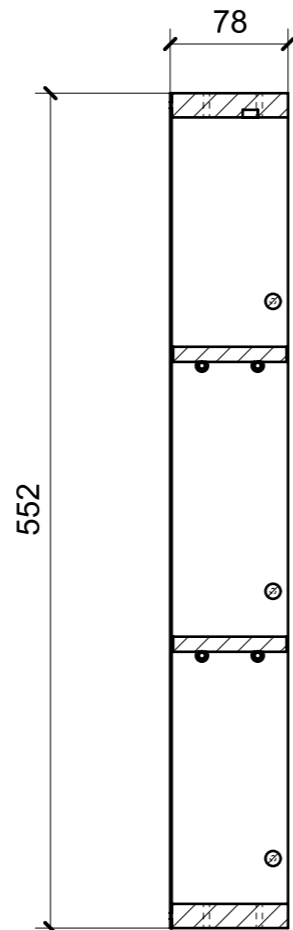
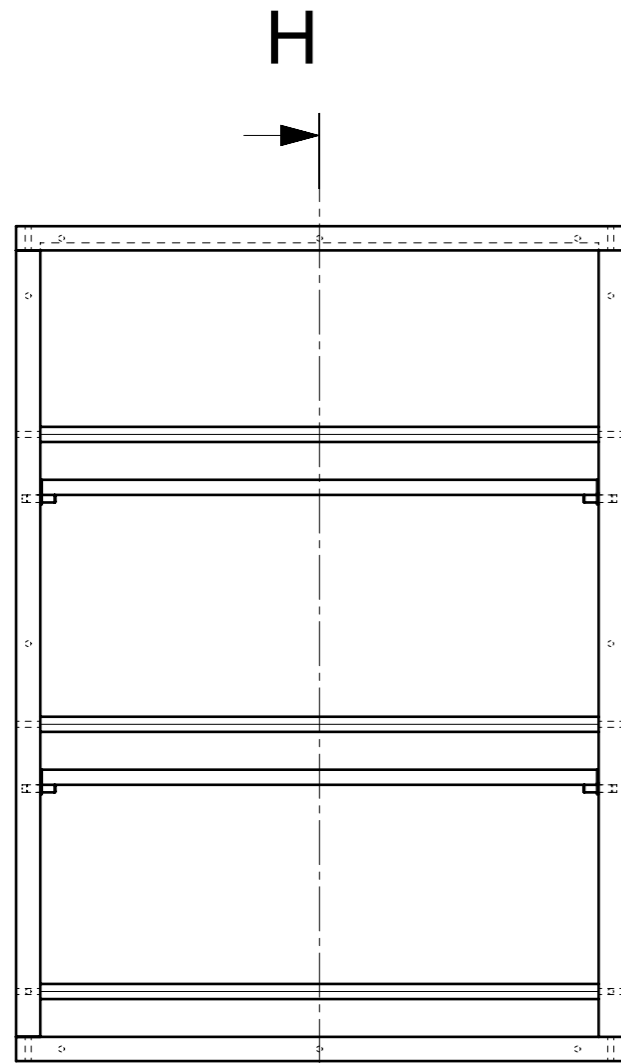
VERNICIATURA LASTRA/LACCATI:

● = VERNICIARE 1 LATO + FILI RASATI O BORDATI

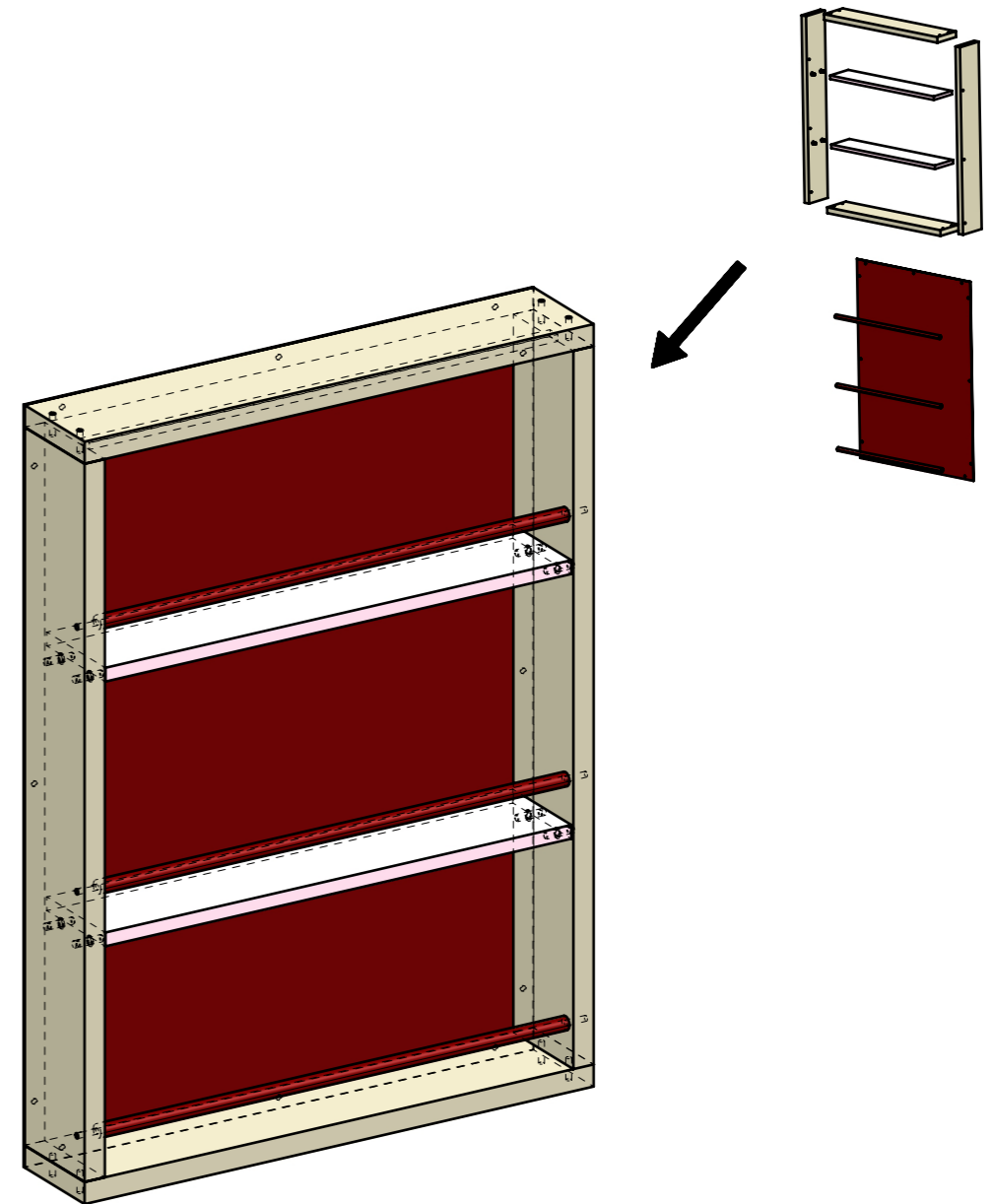
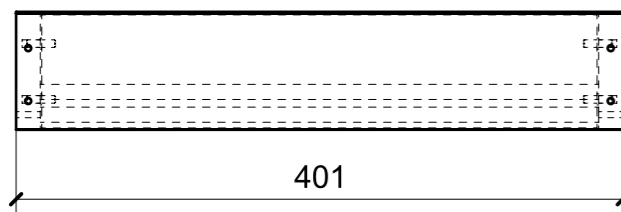
NESSUN SIMBOLO = VERNICIARE 2 LATI + FILI RASATI O BORDATI

01

LOCALE	CODICE	DESCRIZIONE COMPONENTE	FINITURA	Q.TA
BAGNO ARMATORE	MD299_MF_WB01	PARETE SX		1

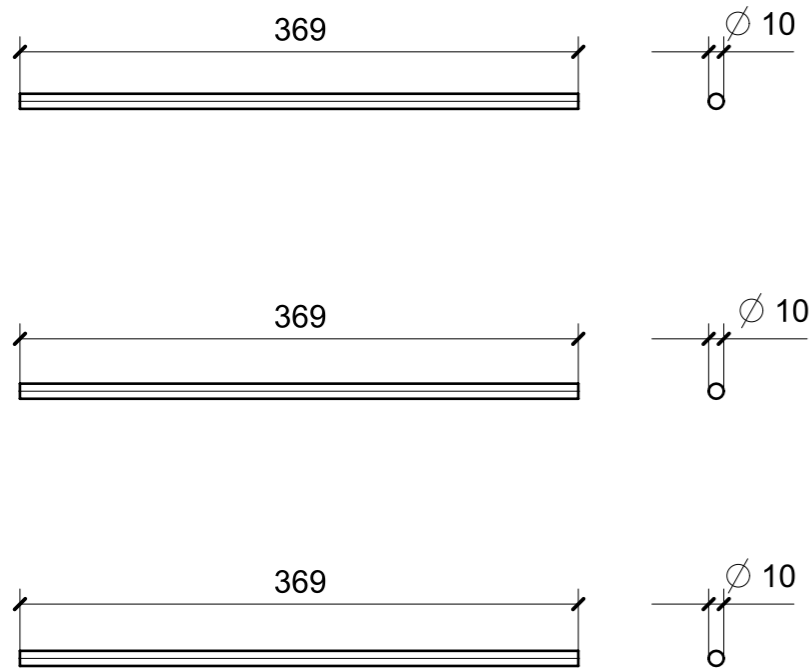


SECTION H-H

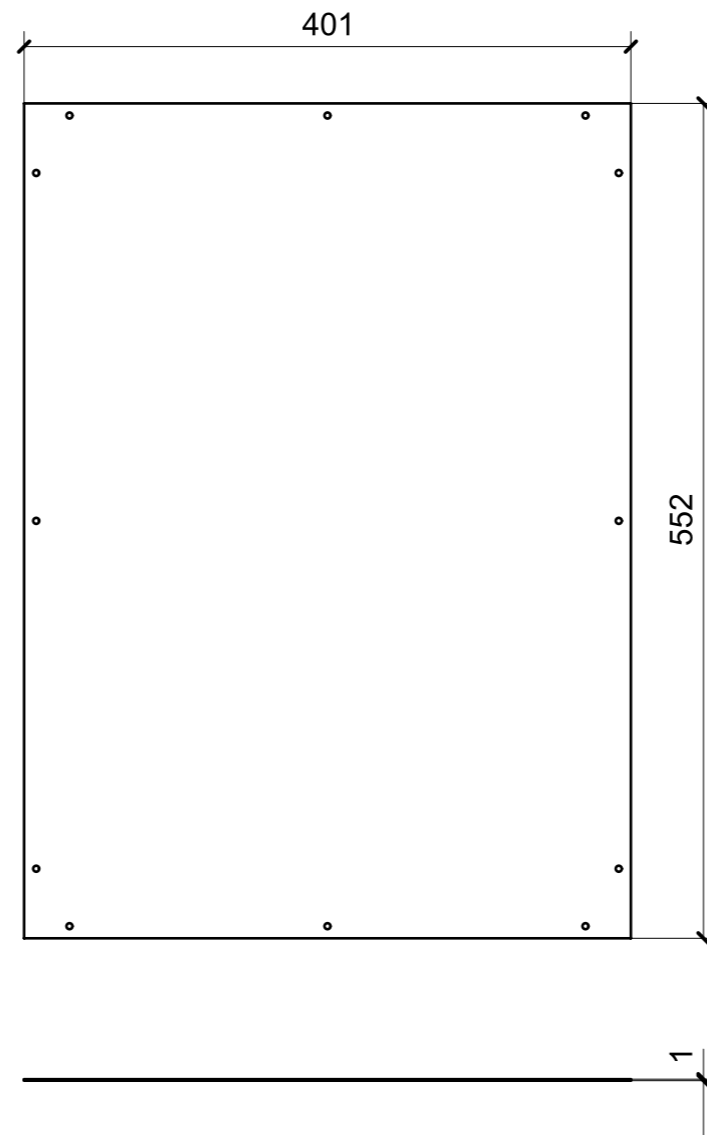


FERRAMENTA	QTY
REGGIRIPANO CILINDRO_FBC_	8
MD299_GR06_P01_WB01_01	1

LOCALE	CODICE	DESCRIZIONE COMPONENTE	FINITURA	Q.TA
BAGNO ARMATORE	MD299_A01_WB01	PARETE SX	ACCIAIO SATINATO BRONZO AUDREY	1

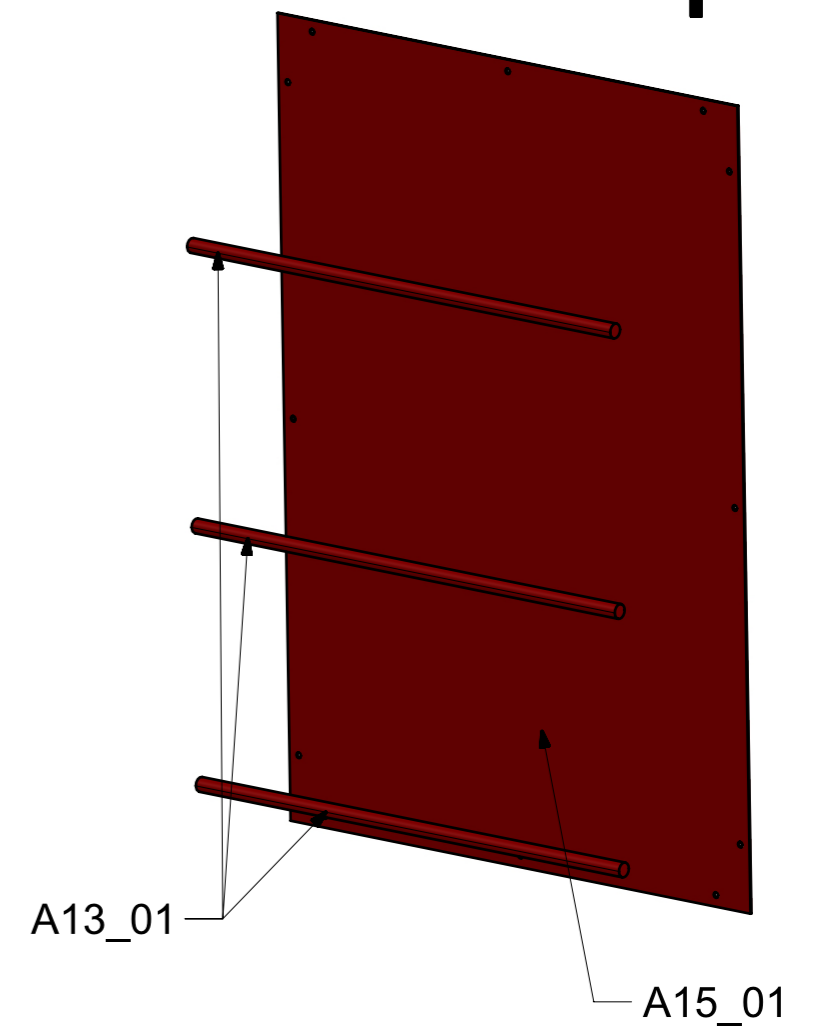
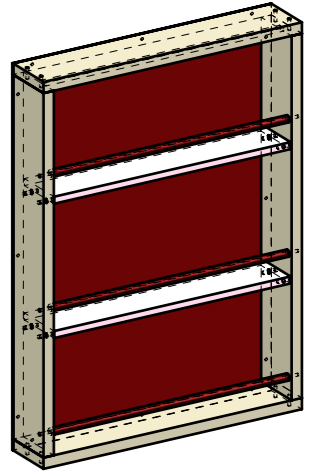


A13_01
(N° 3 pezzi uguali)

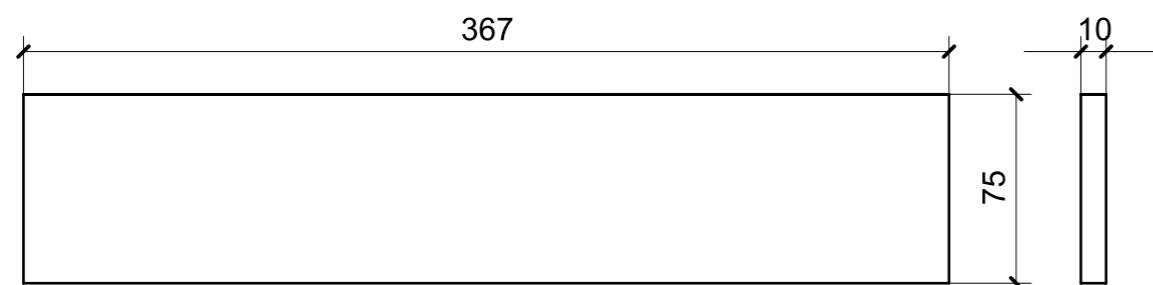
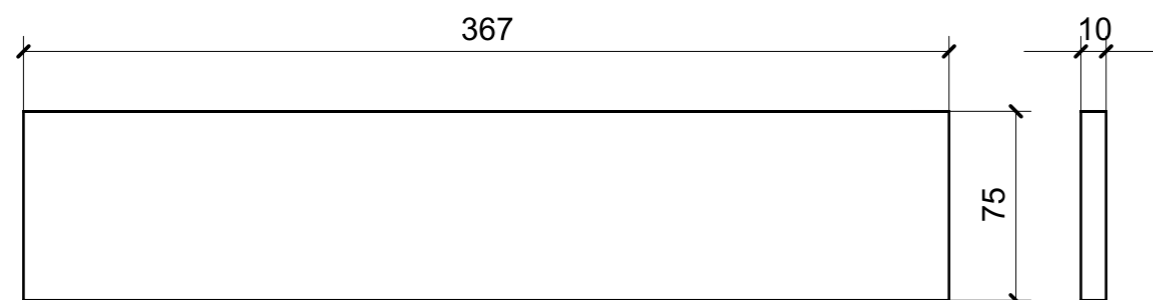


A15_01

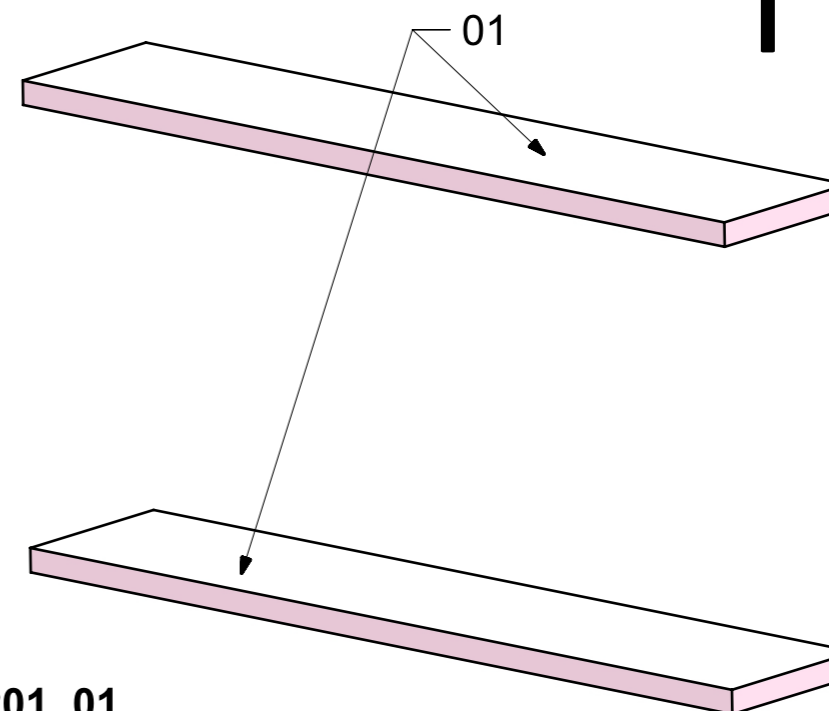
ELEMENTI DA MONTARE
con P01_01; R01_03-->06 in MF_WB01
e spedire con unico imballo



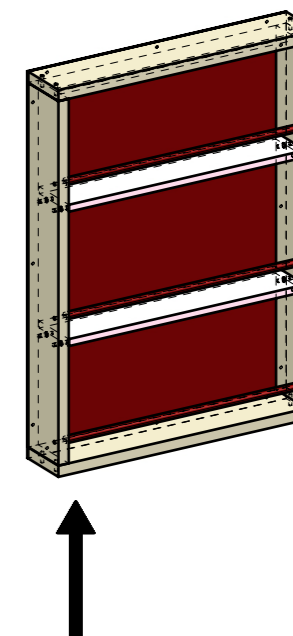
LOCALE	CODICE	DESCRIZIONE COMPONENTE	FINITURA	Q.TA
BAGNO ARMATORE	MD299_P01_WB01	PARETE SX	PLEXIGLASS	1



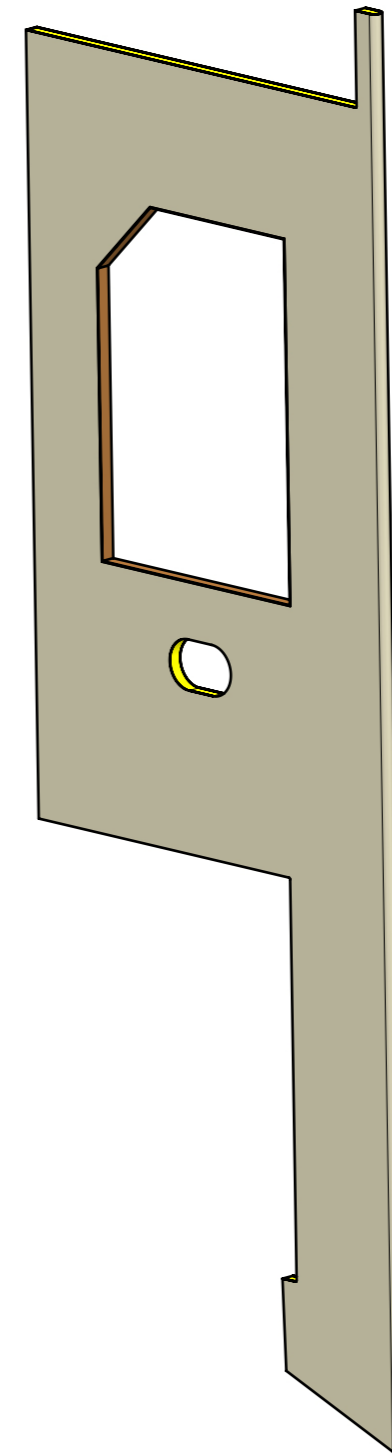
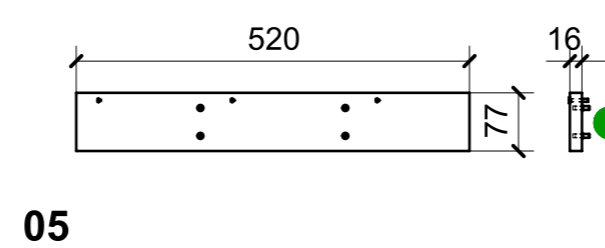
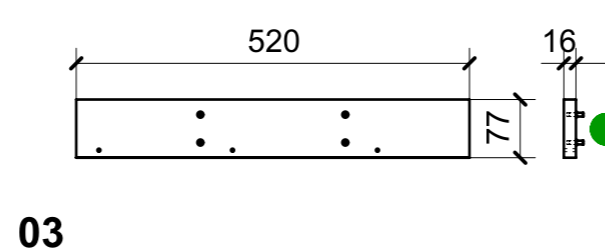
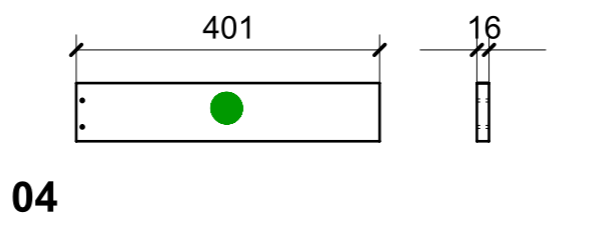
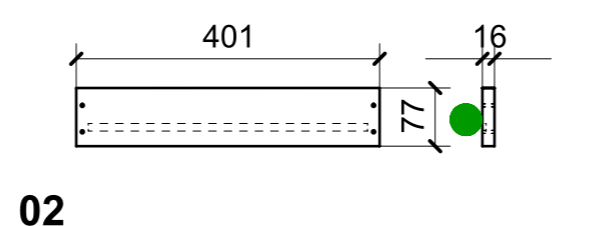
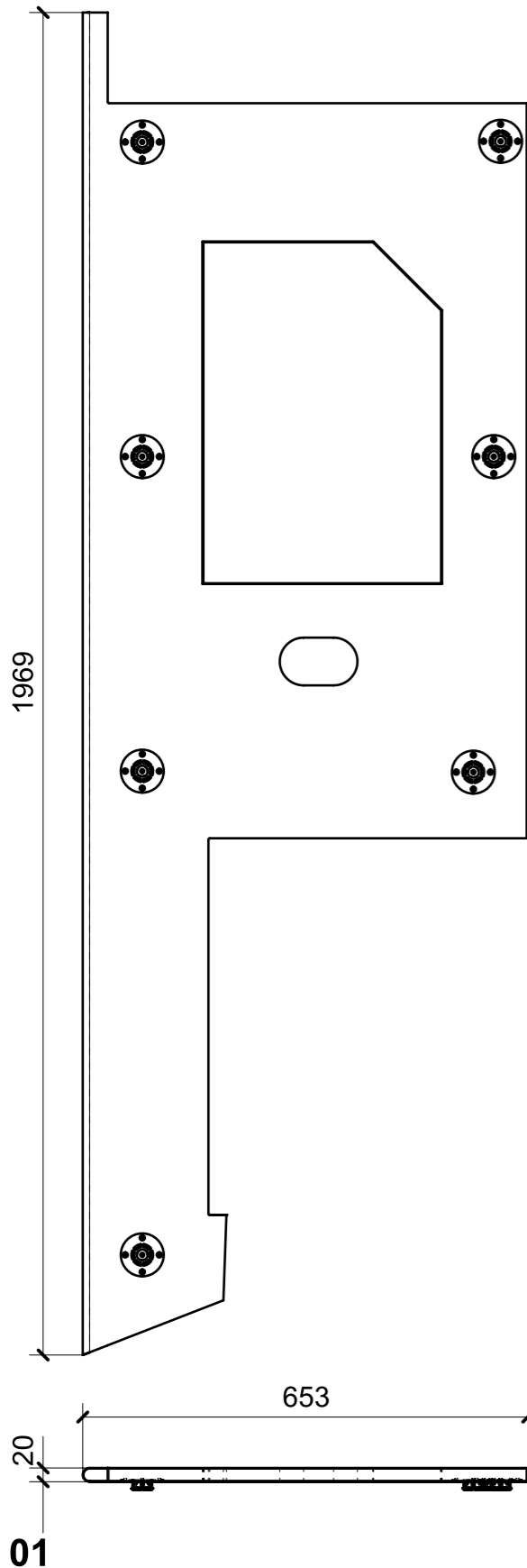
ELEMENTI DA MONTARE
 con A13-A15; R01_03-->06 in MF_WB01
 e spedire con unico imballo



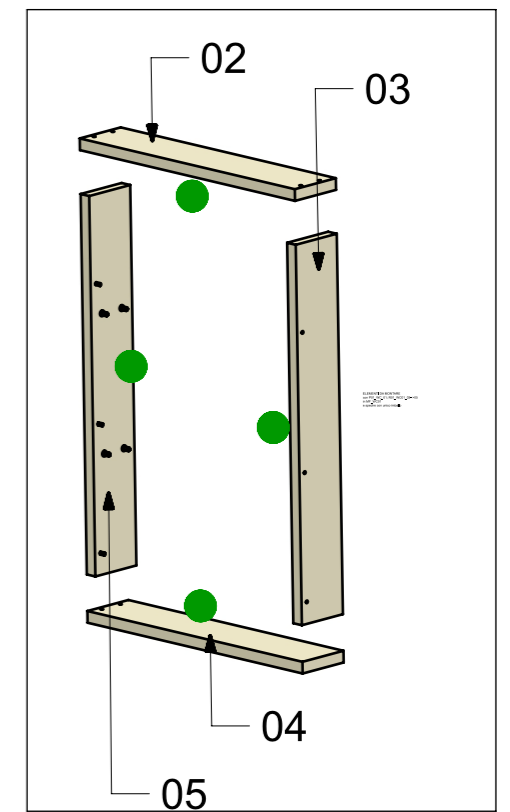
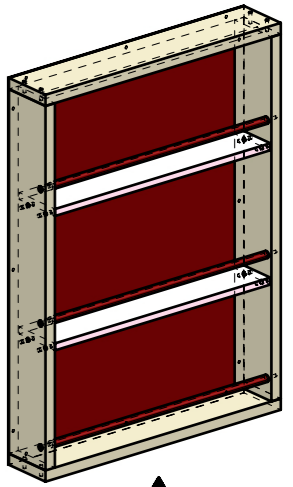
P01_01
 n° 2 pezzi uguali



LOCALE	CODICE	DESCRIZIONE COMPONENTE	FINITURA	Q.TA
BAGNO ARMATORE	MD299_R01_WC01	PARETE DX	LASTRA SCURA	1



ELEMENTI DA MONTARE
con P01_WC_01; A13-A15
in MF_WC01
e spedire con unico imballo



verniciatura lati interno nicchia

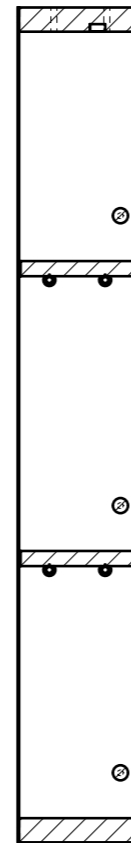
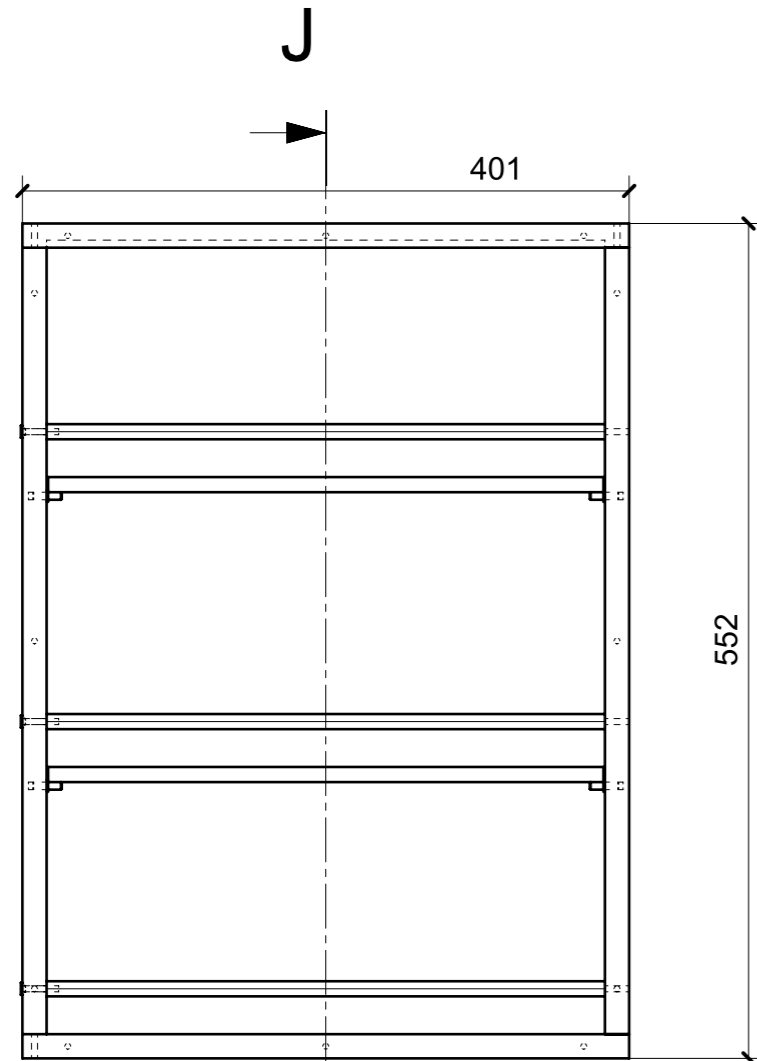
FERRAMENTA	QTY
FITLOCK M_MASCHERPA_3MM_6020202101	7
REGGIRIPIANO CILINDRO_FBC_	8
VITE 4MA X 25 TESTA SVASATA ESAGONALE NERA	3

VERNICIATURA LASTRA/LACCATI:

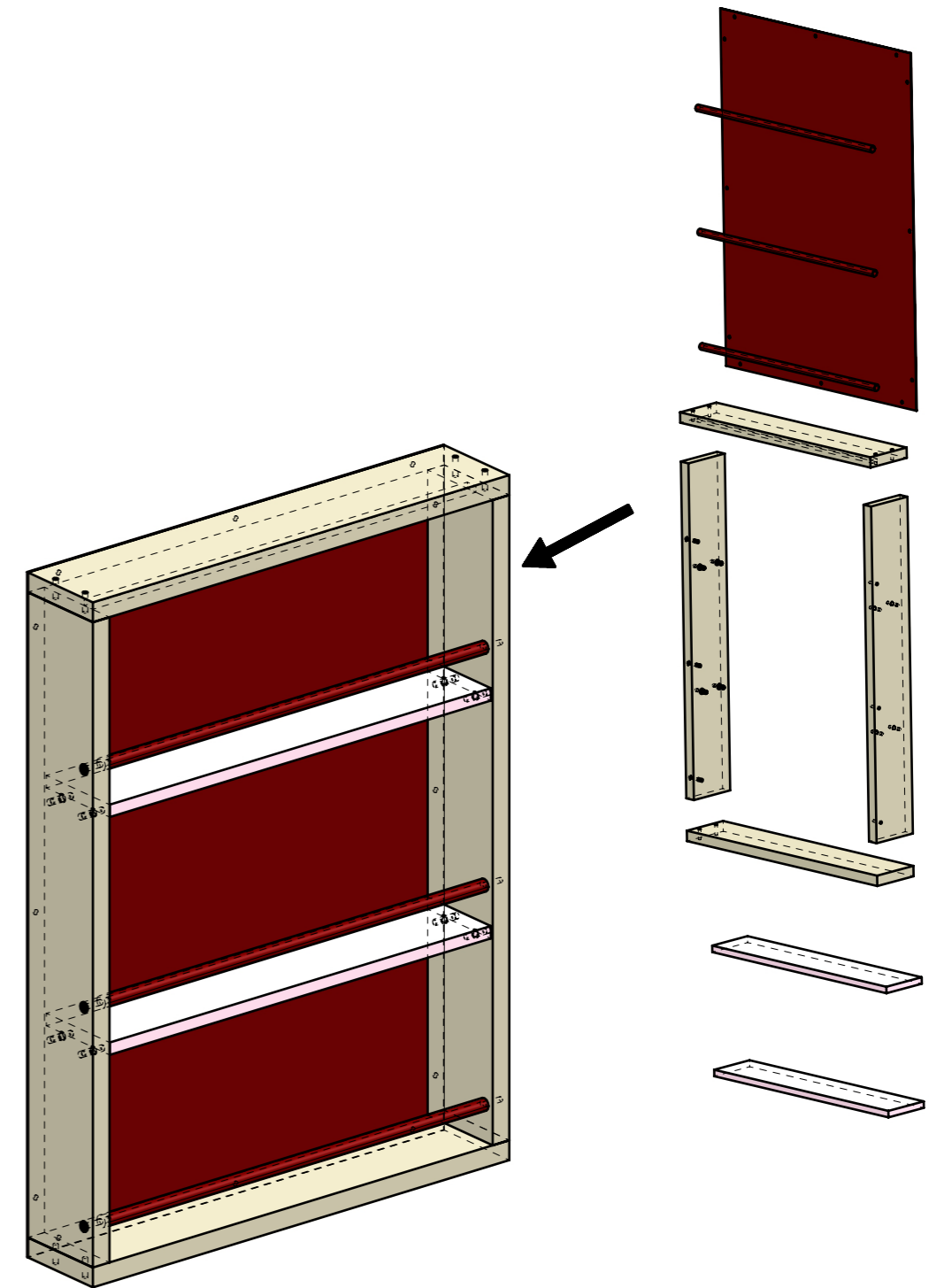
● = VERNICIARE 1 LATO + FILI RASATI O BORDATI

NESSUN SIMBOLO = VERNICIARE 2 LATI + FILI RASATI O BORDATI

LOCALE	CODICE	DESCRIZIONE COMPONENTE	FINITURA	Q.TA
BAGNO ARMATORE	MD299_MF_WC01	PARETE DX		1

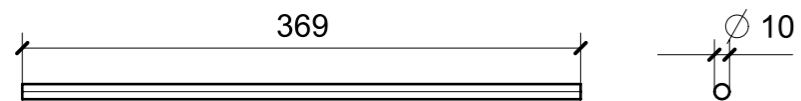
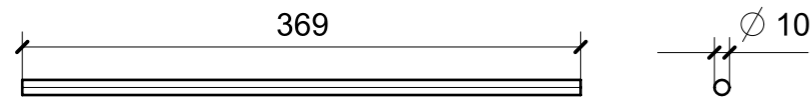
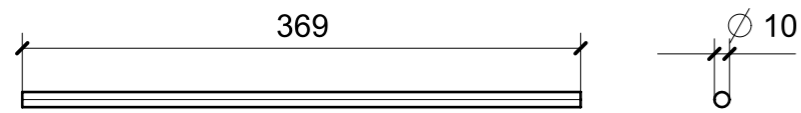


SECTION J-J

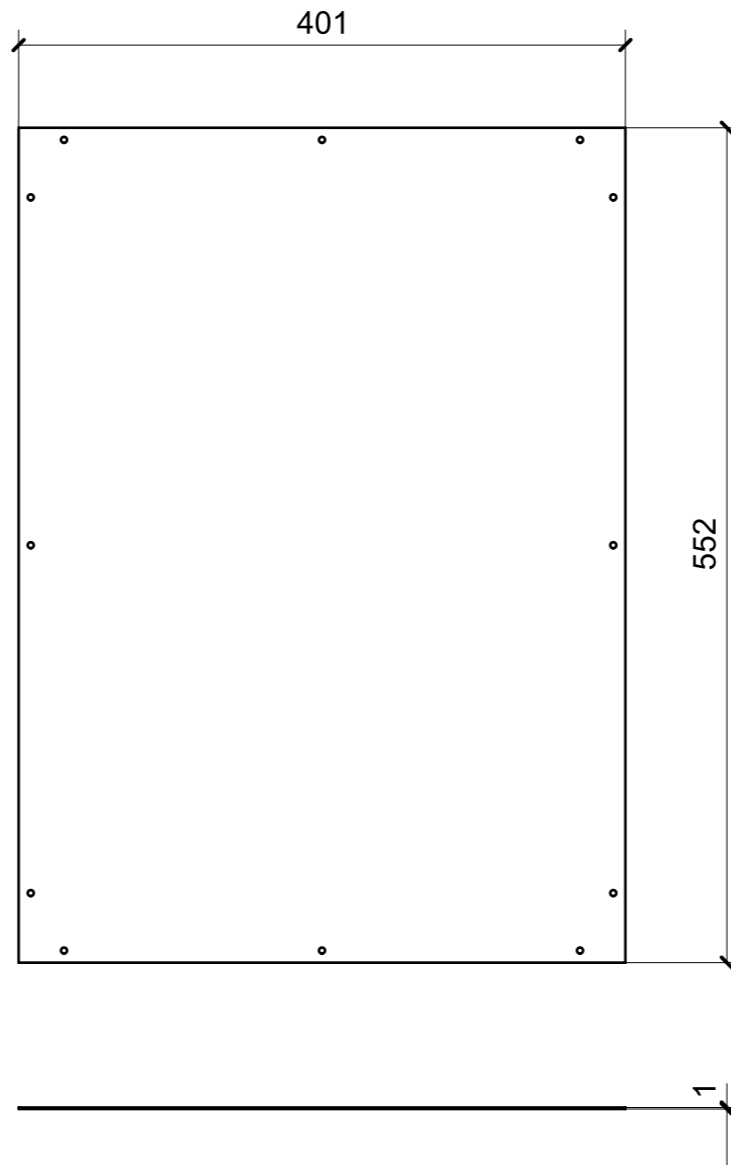


FERRAMENTA	QTY
REGGIRIPIANO CILINDRO_FBC_	8
VITE 4MA X 25 TESTA SVASATA ESAGONALE NERA	3

LOCALE	CODICE	DESCRIZIONE COMPONENTE	FINITURA	Q.TA
BAGNO ARMATORE	MD299_A01_WC01	PARETE DX	ACCIAIO SATINATO BRONZO AUDREY	1

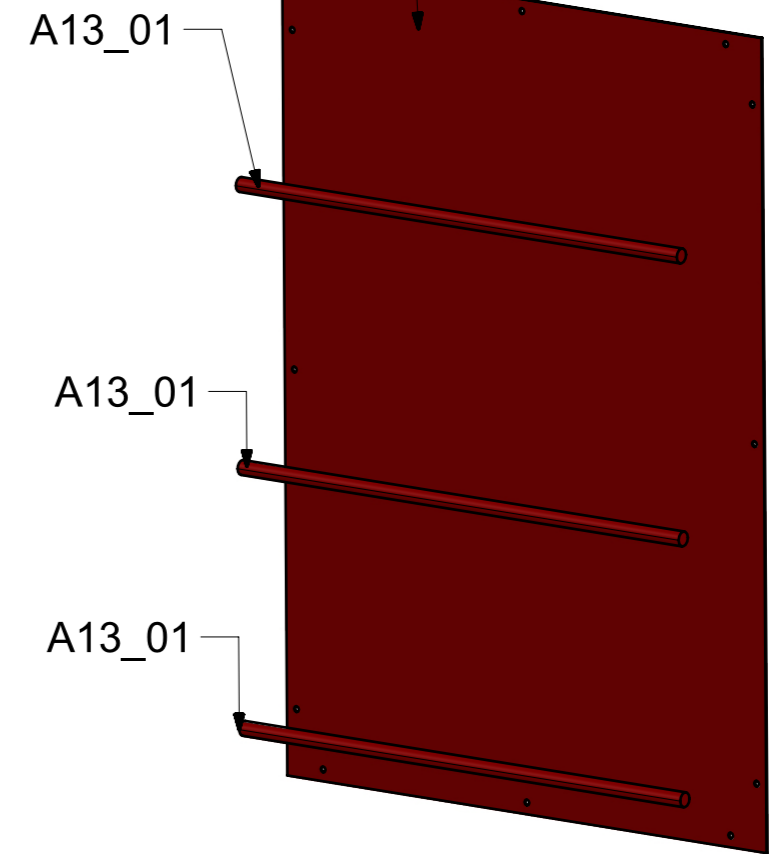
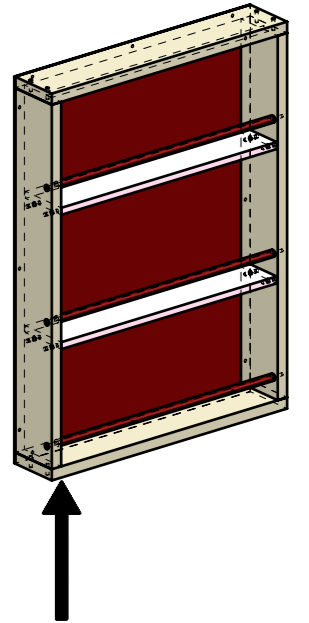


A13_01
(N° 3 pezzi uguali)

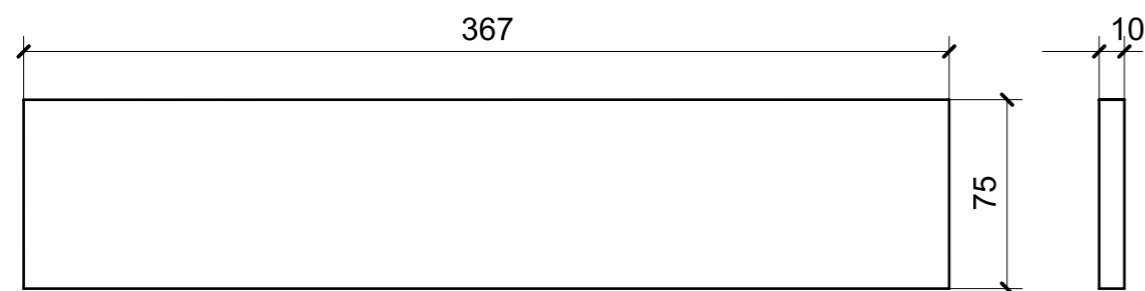
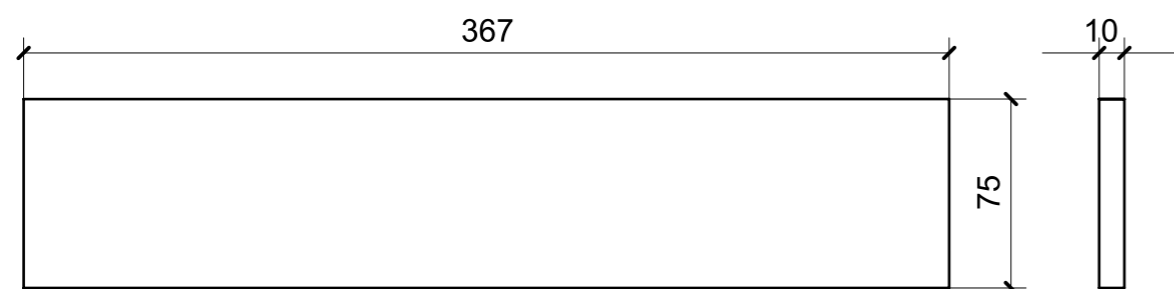


A15_01

ELEMENTI DA MONTARE
con P01_WC_01; R01_WC01_02-->05
in MF_WC01
e spedire con unico imballo

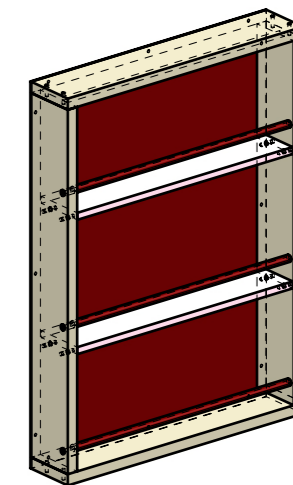


LOCALE	CODICE	DESCRIZIONE COMPONENTE	FINITURA	Q.TA
BAGNO ARMATORE	MD299_P01_WC01	PARETE DX	PLEXIGLASS	1

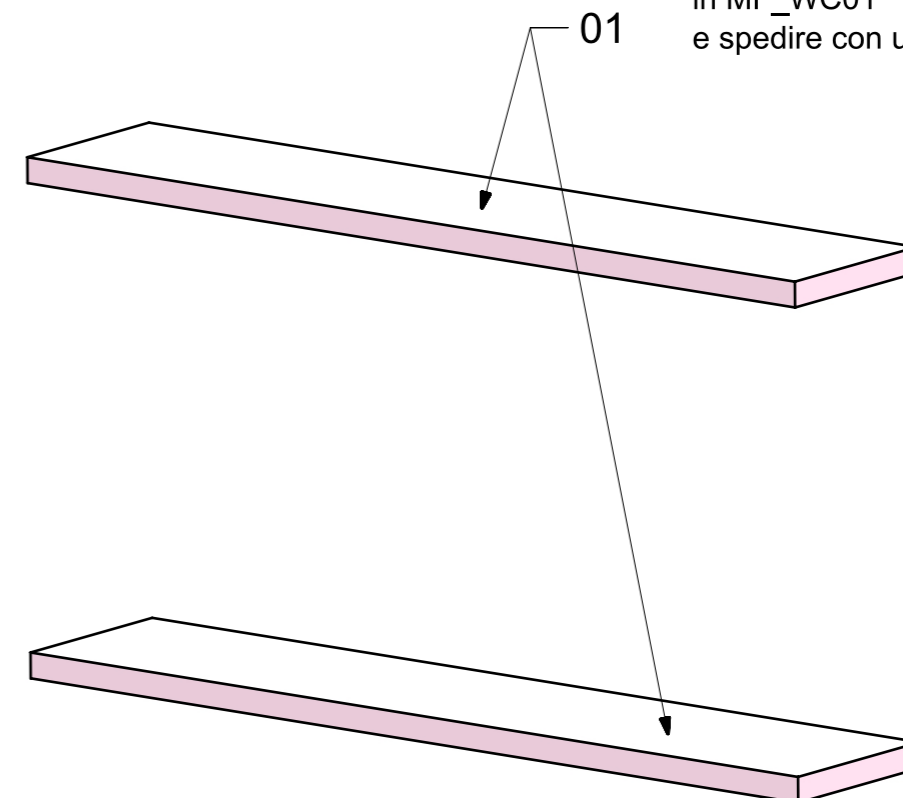


01

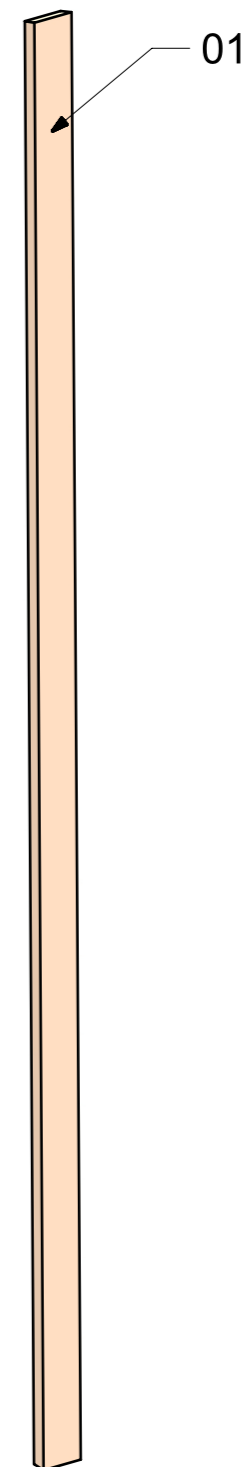
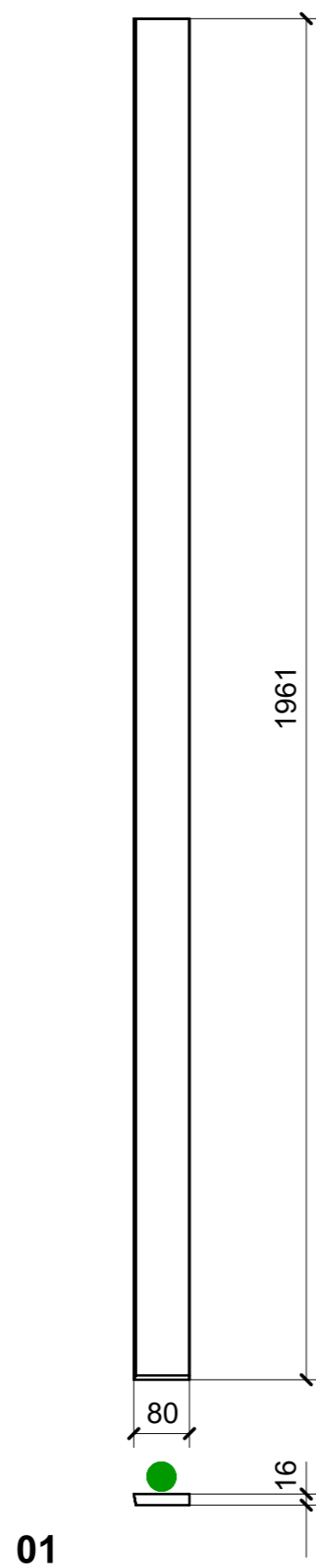
P01_01
(N° 2 pezzi uguali)



ELEMENTI DA MONTARE
con R01_WC_02-->05; A13-A15
in MF_WC01
e spedire con unico imballo



LOCALE	CODICE	DESCRIZIONE COMPONENTE	FINITURA	Q.TA
BAGNO ARMATORE	MD299_L01_WC01	PARETE DX	LACCATO BIANCO 9010	1

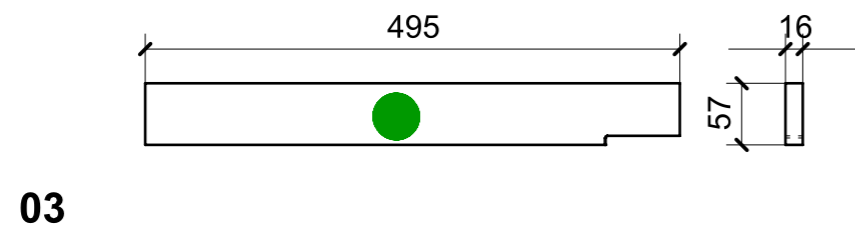
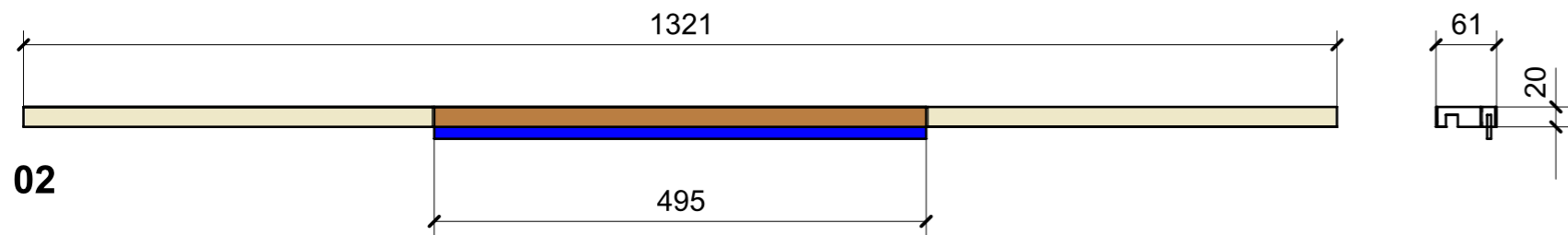
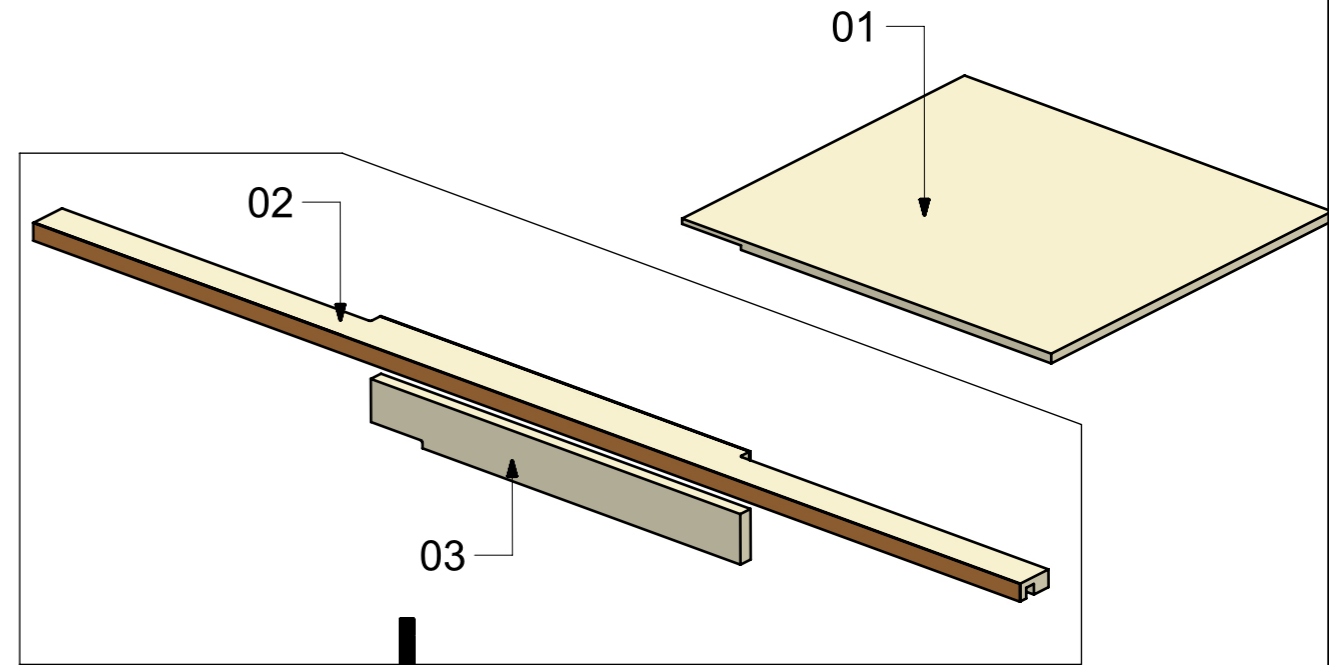
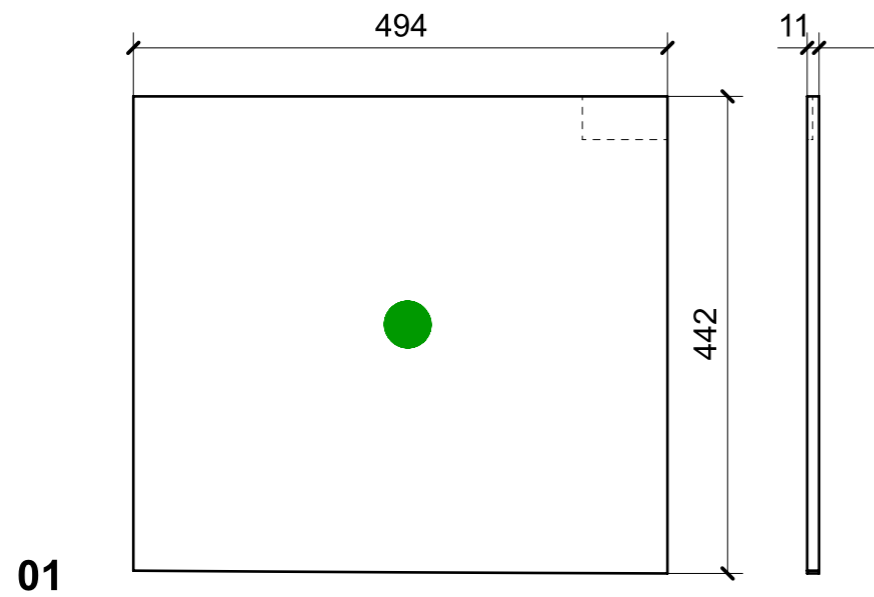


VERNICIATURA LASTRA/LACCATI:

● = VERNICIARE 1 LATO + FILI RASATI O BORDATI

NESSUN SIMBOLO = VERNICIARE 2 LATI + FILI RASATI O BORDATI

LOCALE	CODICE	DESCRIZIONE COMPONENTE	FINITURA	Q.TA
BAGNO ARMATORE	MD299_R01_WD01	STRUTTURA DIETRO LAVABO	LAISTRA SCURA	1



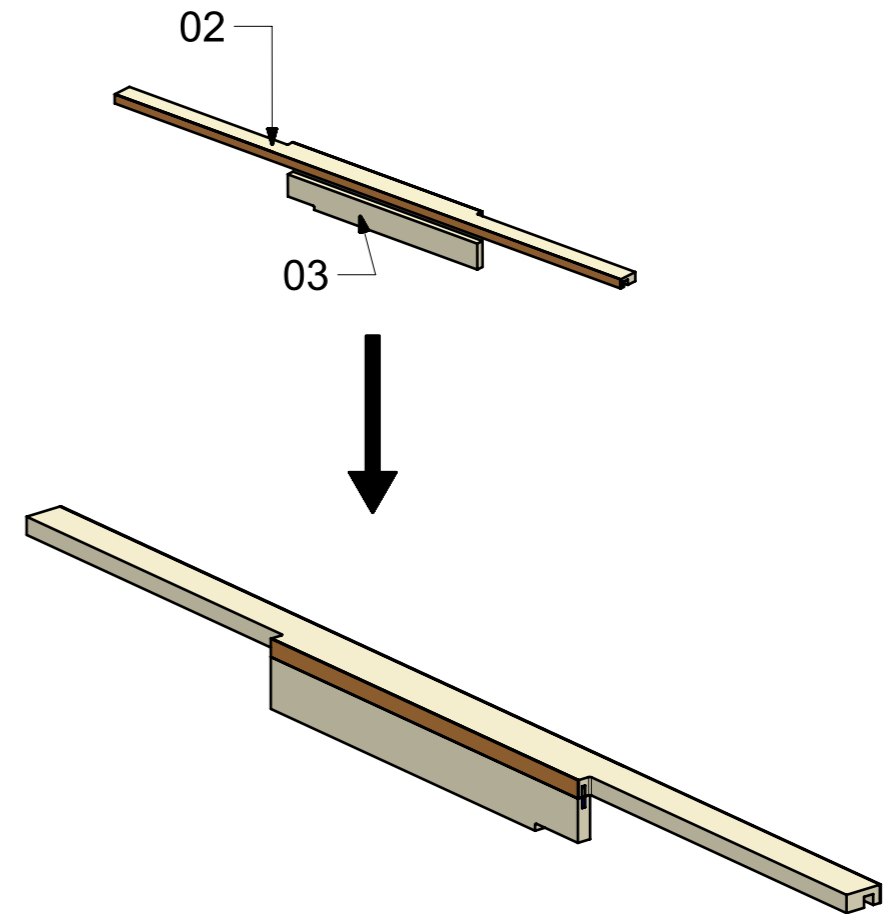
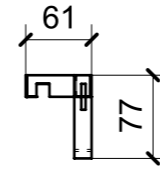
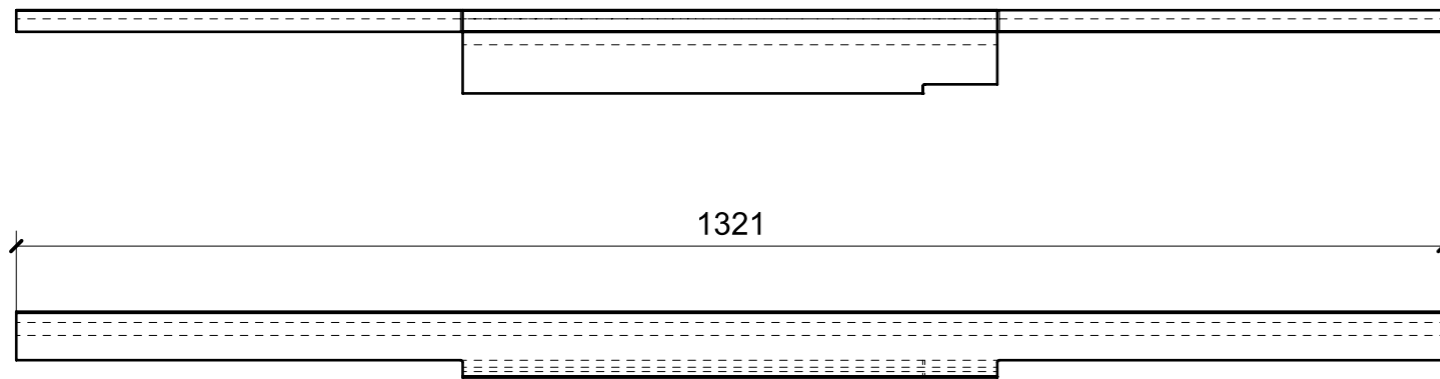
ELEMENTI DA MONTARE in MG_WD01
e spedire con unico imballo

VERNICIATURA LASTRA/LACCATI:

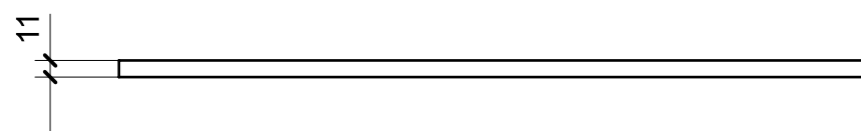
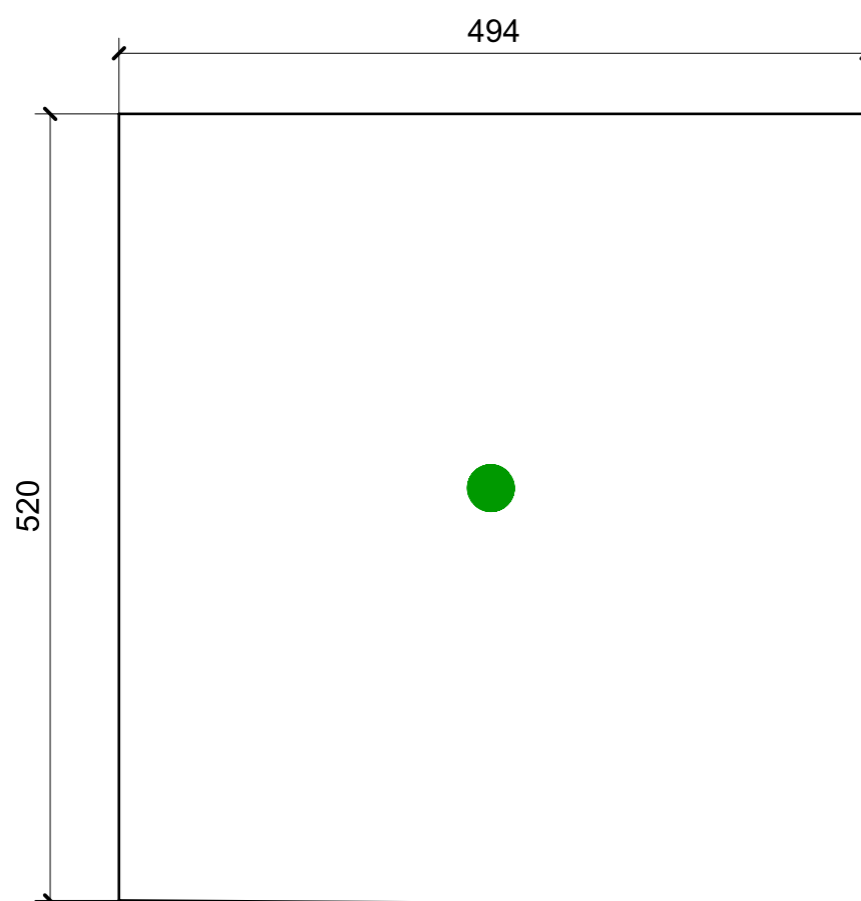
● = VERNICIARE 1 LATO + FILI RASATI O BORDATI

NESSUN SIMBOLO = VERNICIARE 2 LATI + FILI RASATI O BORDATI

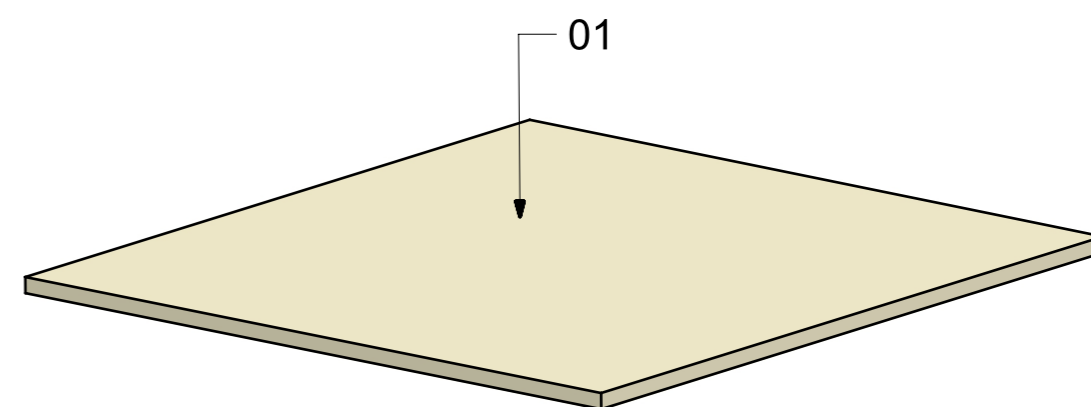
LOCALE	CODICE	DESCRIZIONE COMPONENTE	FINITURA	Q.TA
BAGNO ARMATORE	MD299_MG_WD01	STRUTTURA DIETRO LAVABO	LASTRA SCURA	1



LOCALE	CODICE	DESCRIZIONE COMPONENTE	FINITURA	Q.TA
BAGNO ARMATORE	MD299_R01_WE01	CIELINO LAVABO	LASTRA SCURA	1



01

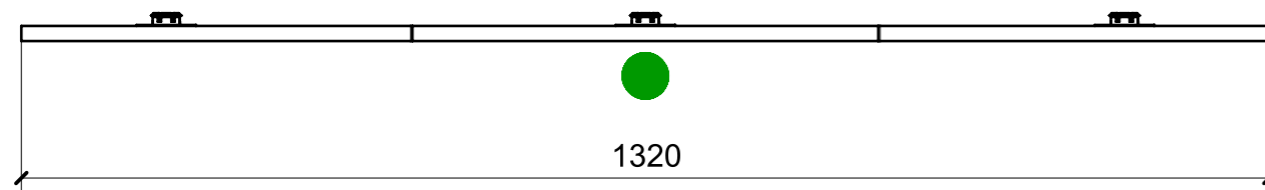
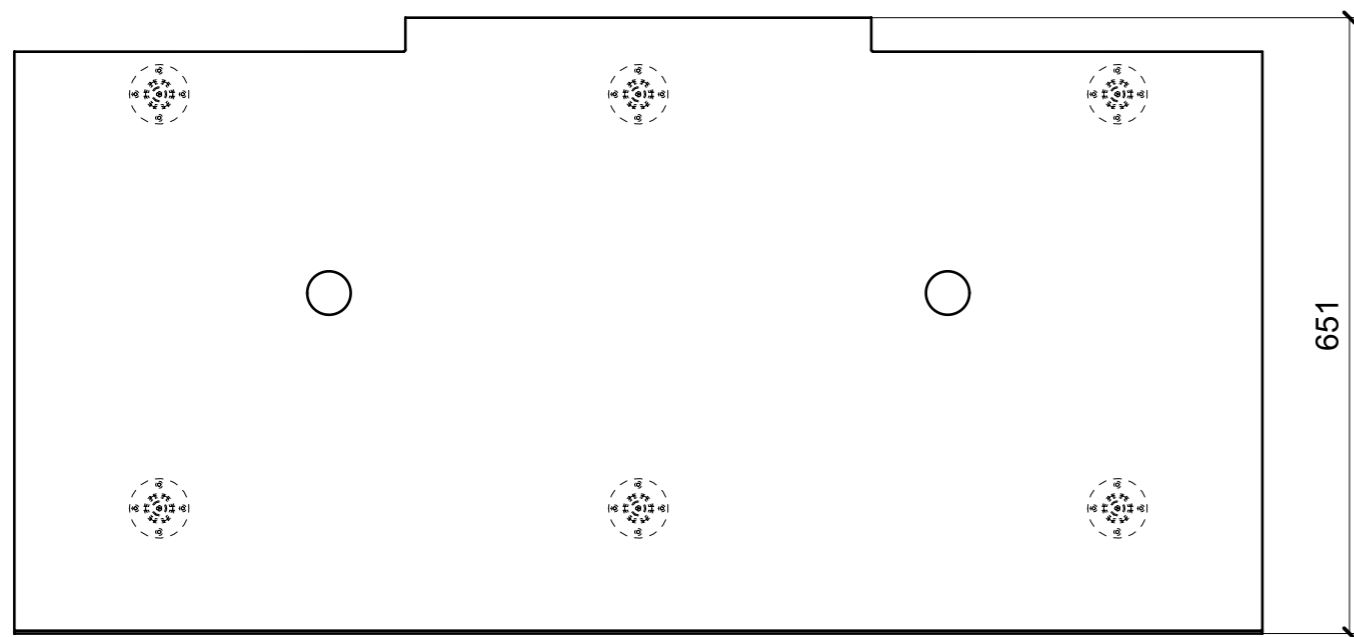


VERNICIATURA LASTRA/LACCATI:

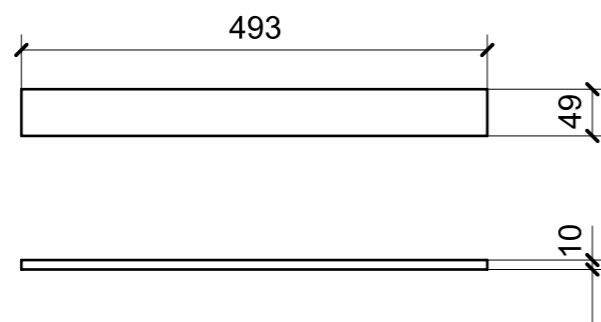
● = VERNICIARE 1 LATO + FILI RASATI O BORDATI

NESSUN SIMBOLO = VERNICIARE 2 LATI + FILI RASATI O BORDATI

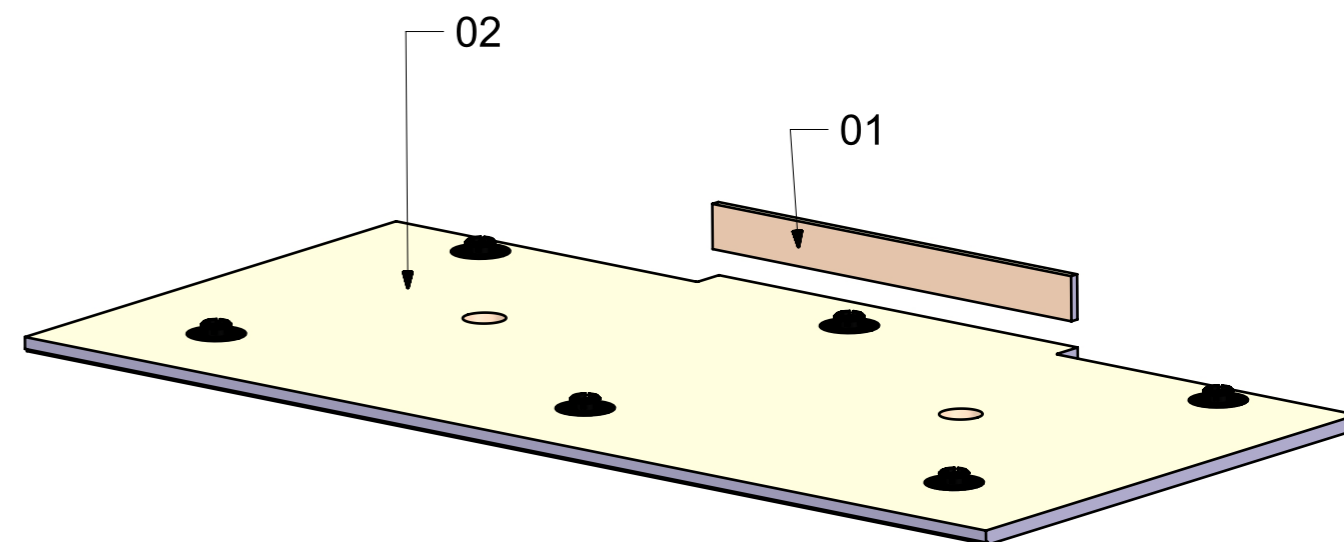
LOCALE	CODICE	DESCRIZIONE COMPONENTE	FINITURA	Q.TA
BAGNO ARMATORE	MD299_L01_WE01	CIELINO LAVABO	LACCATO BIANCO 9010	1



02



01



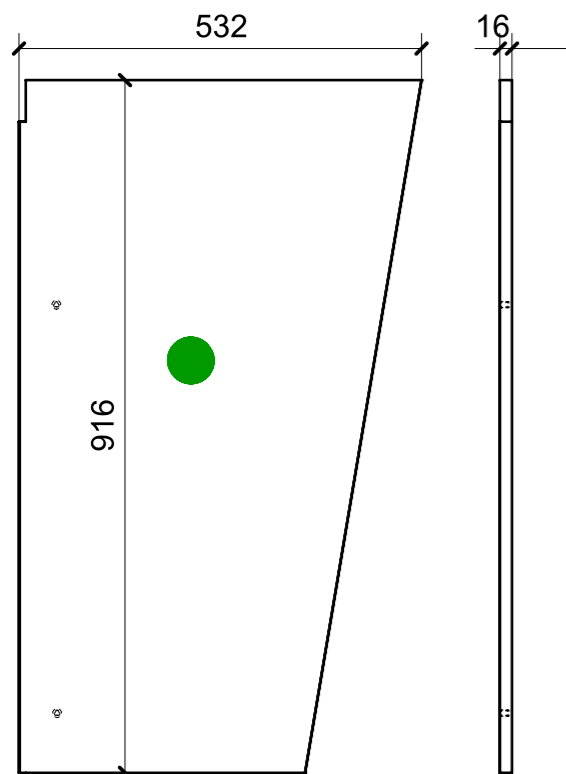
FERRAMENTA	QTY
FITLOCK M_MASCHERPA_3MM_6020202101	6

VERNICIATURA LASTRA/LACCATI:

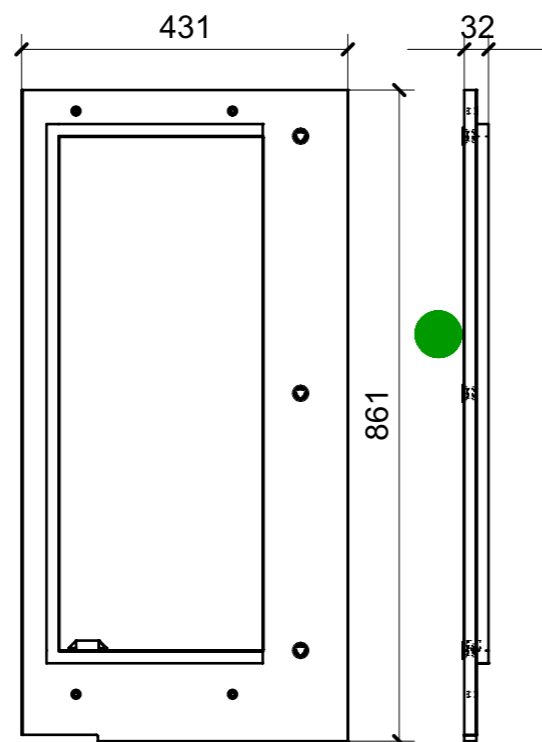
● = VERNICIARE 1 LATO + FILI RASATI O BORDATI

NESSUN SIMBOLO = VERNICIARE 2 LATI + FILI RASATI O BORDATI

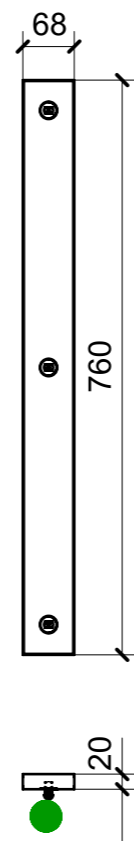
LOCALE	CODICE	DESCRIZIONE COMPONENTE	FINITURA	GR.
BAGNO ARMATORE	MD299_R01_WF01	PENSILE SX	LASTRA SCURA	09



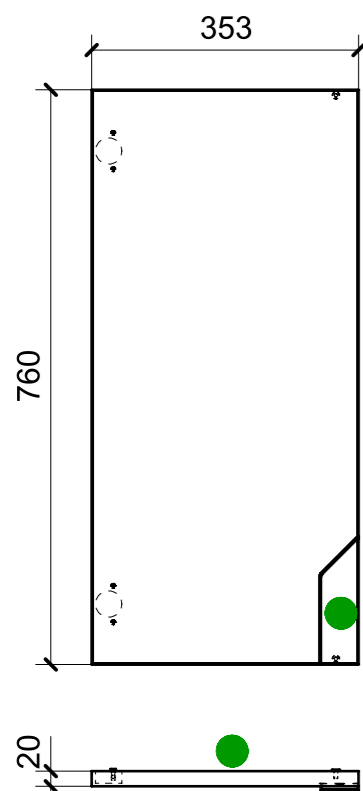
01



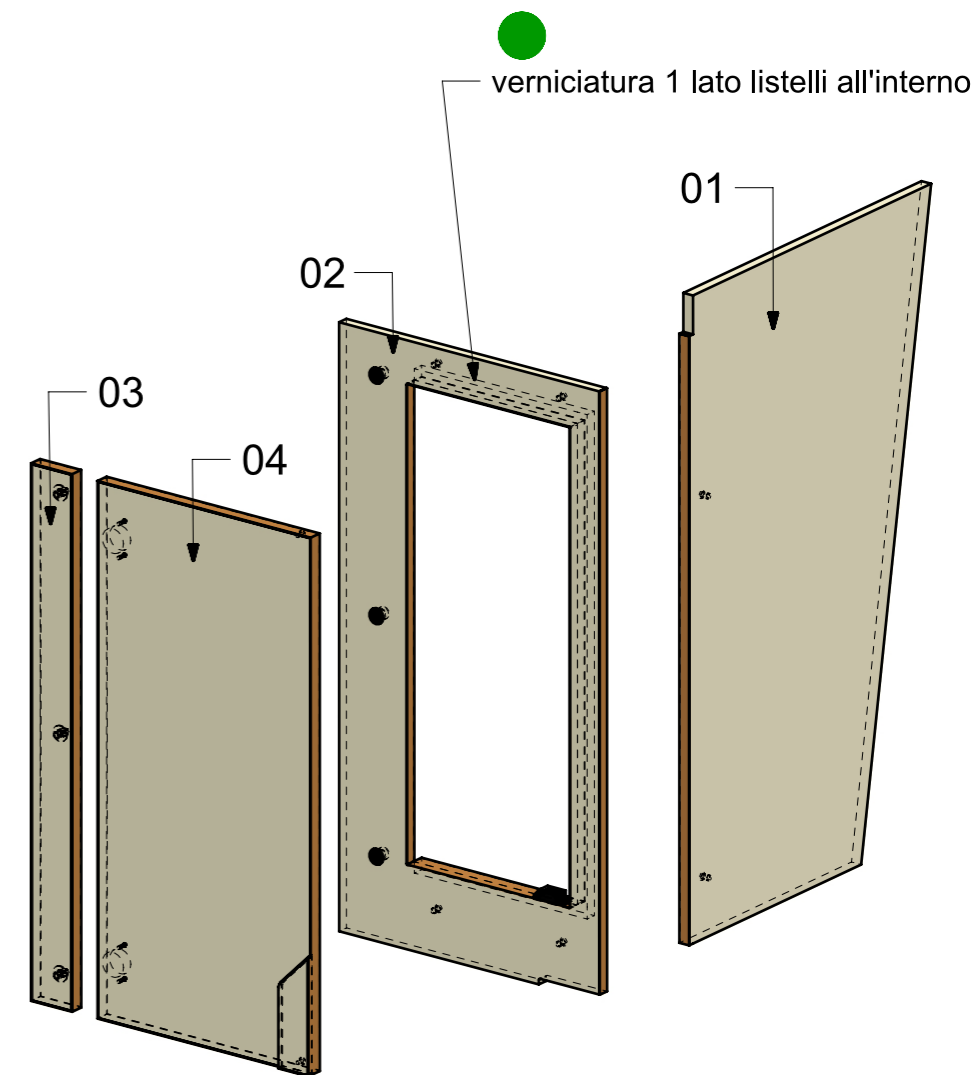
02



03



04



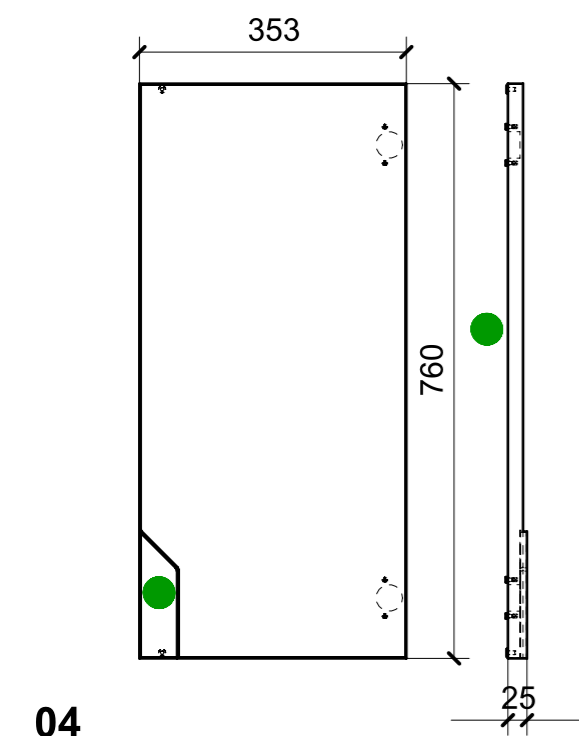
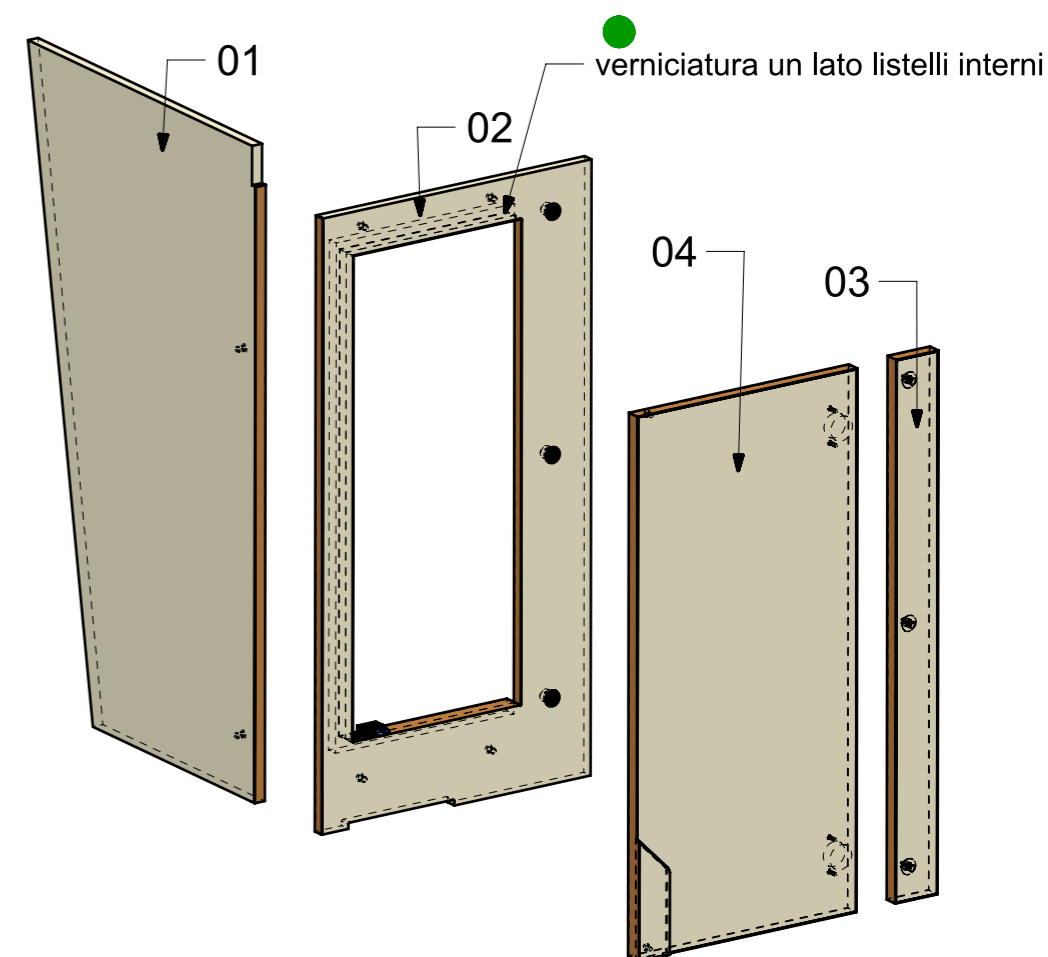
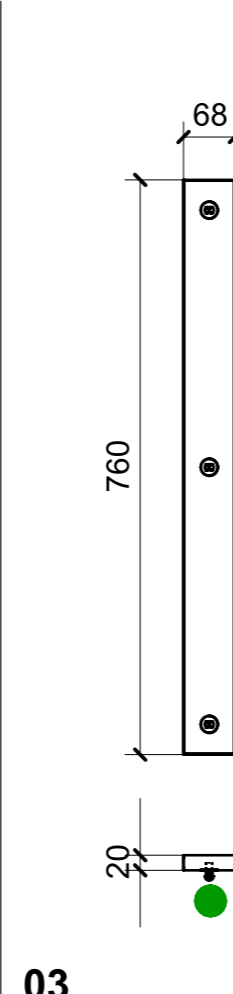
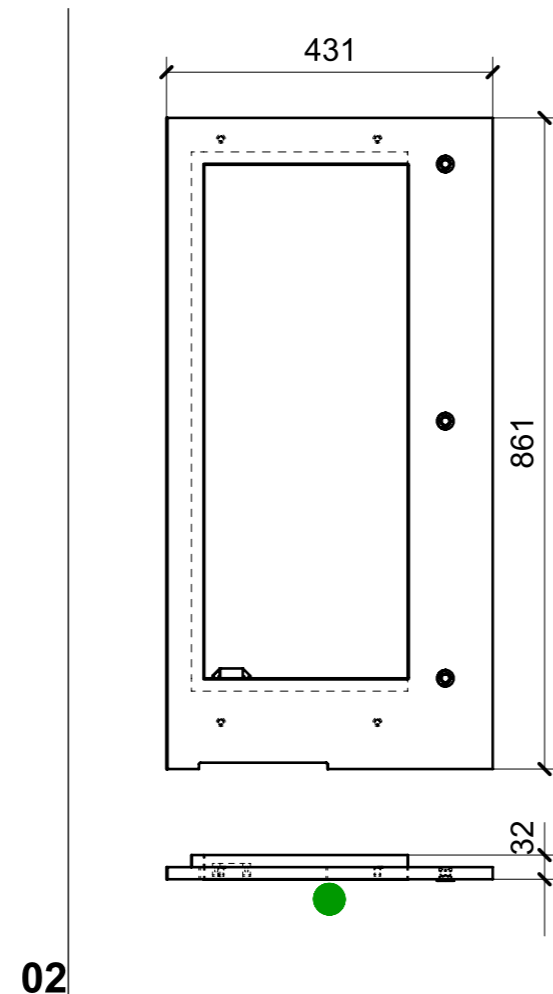
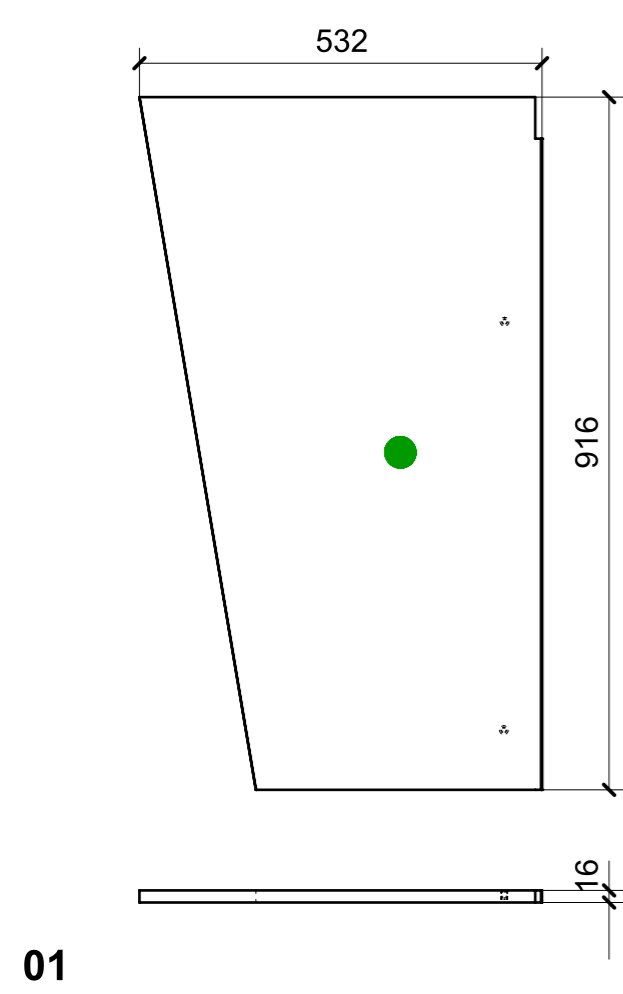
FERRAMENTA	QTY
BUSSOLA 5MA ANKOR BORGHI X CERNIERA PIANA	4
BUSSOLA 6MA X 10 FORO DIAM.8	6
CALAMITA SEALED MAGNETIC_TECNOPARTNER_MC-JM50-BL	1
FM INCASSO_ITALVIPLA_973_FMPC_F1A	3
GOMMINO PARACOLPO ANTA	2
MS INCASSO_ITALVIPLA_972_FMPC_M1B	3
VITE 4MAX8 ANKOR BORGHI X CERNIERA PIANA	4

VERNICIATURA LASTRA/LACCATI:

● = VERNICIARE 1 LATO + FILI RASATI O BORDATI

NESSUN SIMBOLO = VERNICIARE 2 LATI + FILI RASATI O BORDATI

LOCALE	CODICE	DESCRIZIONE COMPONENTE	FINITURA	Q.TA
BAGNO ARMATORE	MD299_R01_WG01	PENSILE DX	LASTRA SCURA	1



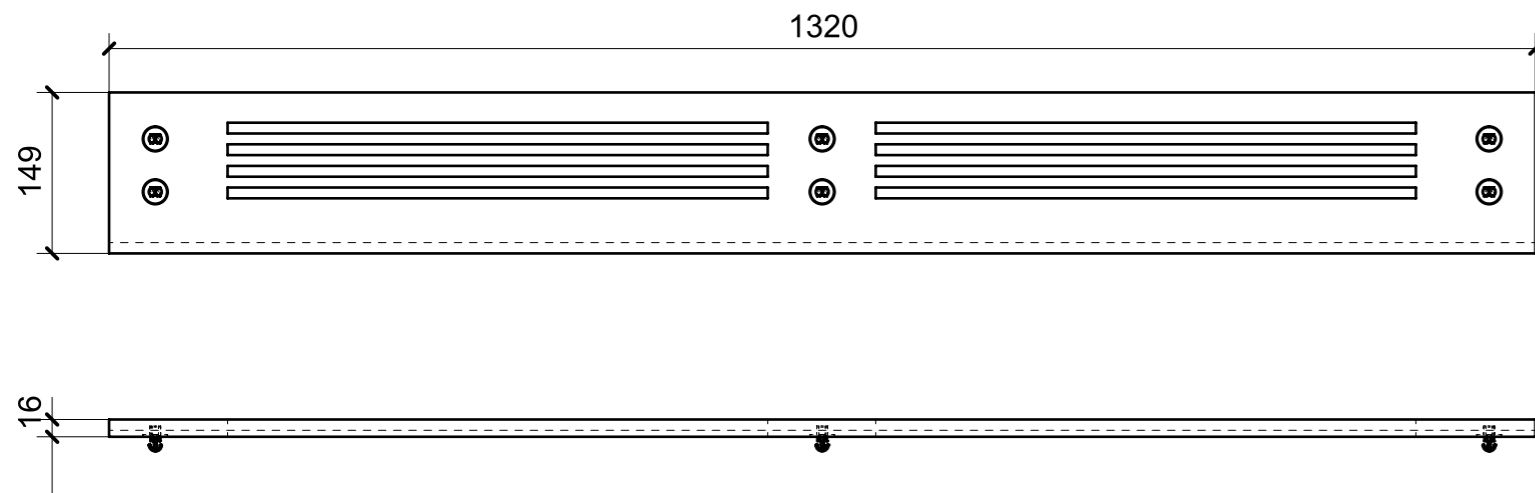
FERRAMENTA	QTY
BUSSOLA 5MA ANKOR BORGHI X CERNIERA PIANA	4
BUSSOLA 6MA X 10 FORO DIAM.8	6
CALAMITA SEALED MAGNETIC_TECNOPARTNER_MC-JM50-BL	1
FM INCASSO_ITALVIPLA_973_FMPC_F1A	3
GOMMINO PARACOLPO ANTA	2
MS INCASSO_ITALVIPLA_972_FMPC_M1B	3
VITE 4MAX8 ANKOR BORGHI X CERNIERA PIANA	4

VERNICIATURA LASTRA/LACCATI:

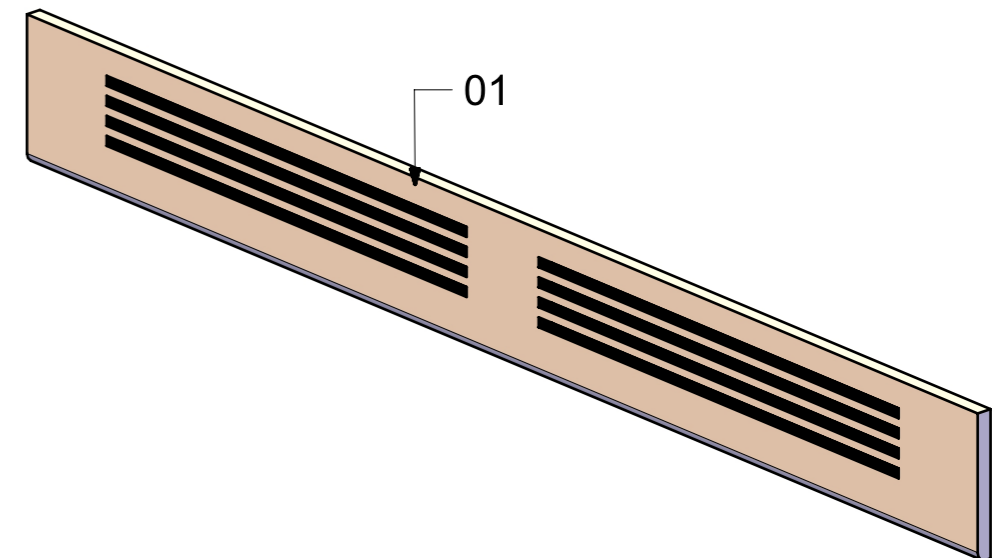
● = VERNICIARE 1 LATO + FILI RASATI O BORDATI

NESSUN SIMBOLO = VERNICIARE 2 LATI + FILI RASATI O BORDATI

LOCALE	CODICE	DESCRIZIONE COMPONENTE	FINITURA	Q.TA
BAGNO ARMATORE	MD299_L01_WH01	PLENUM BAGNO	LACCATO BIANCO 9010	1



01



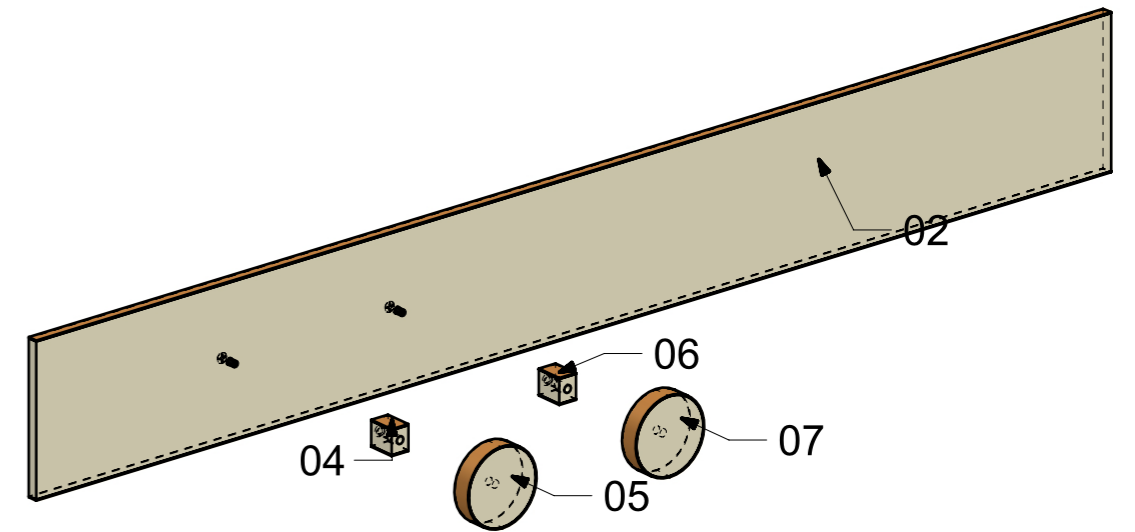
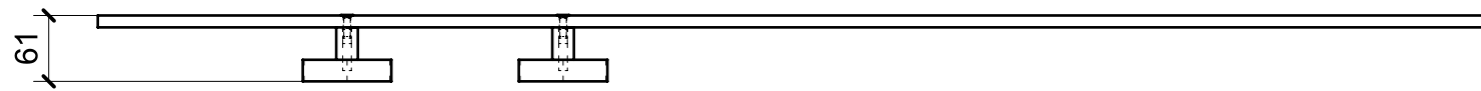
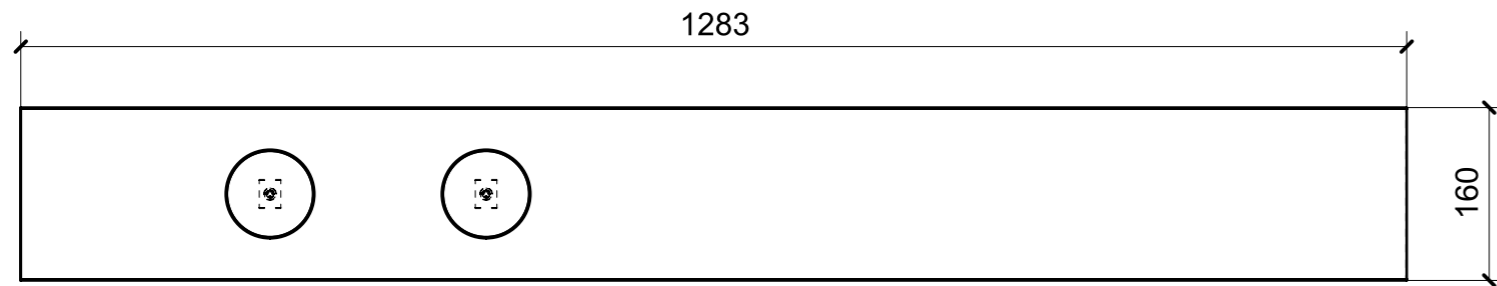
FERRAMENTA	QTY
MS INCASSO_ITALVIPLA_972_FMPC_M1B	6

VERNICIATURA LASTRA/LACCATI:

● = VERNICIARE 1 LATO + FILI RASATI O BORDATI

NESSUN SIMBOLO = VERNICIARE 2 LATI + FILI RASATI O BORDATI

LOCALE	CODICE	DESCRIZIONE COMPONENTE	FINITURA	Q.TA
BAGNO ARMATORE	MD299_MG_WI01	APPENDINI	LASTRA SCURA	1



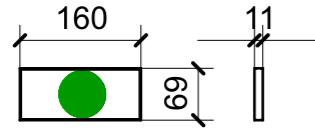
FERRAMENTA	QTY
BUSSOLA 6MA X 10 FORO DIAM.8 X APPENDIABITI	2
VITE 6MA X 20 TESTA SVASATA_FBC X APPENDIABITI	2

VERNICIATURA LASTRA/LACCATI:

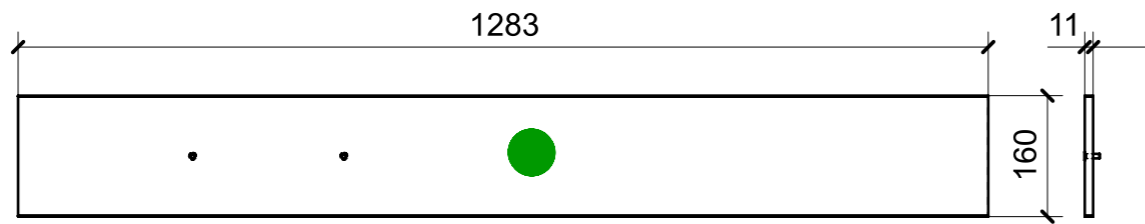
● = VERNICIARE 1 LATO + FILI RASATI O BORDATI

NESSUN SIMBOLO = VERNICIARE 2 LATI + FILI RASATI O BORDATI

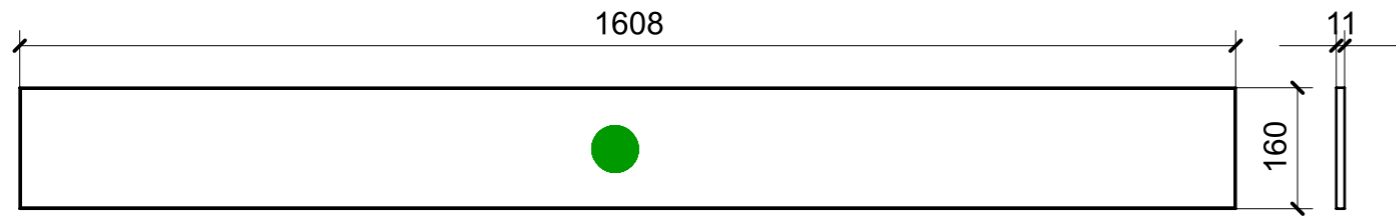
LOCALE	CODICE	DESCRIZIONE COMPONENTE	FINITURA	Q.TA
BAGNO ARMATORE	MD299_R01_WI01	APPENDINI	LASTRA SCURA	1



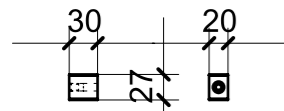
01



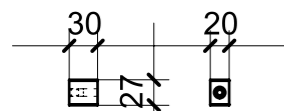
02



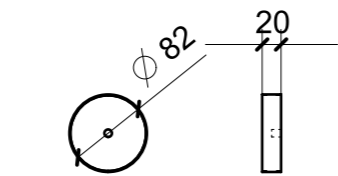
03



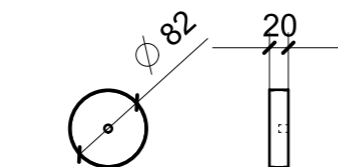
04



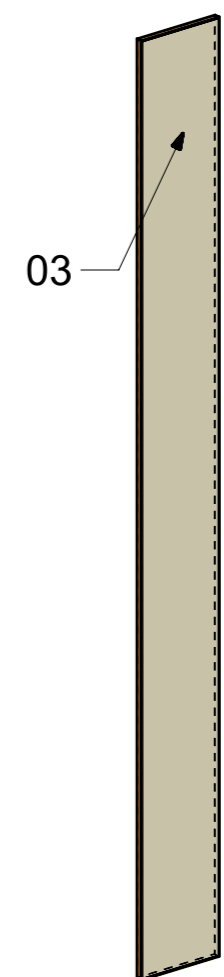
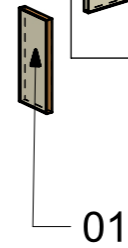
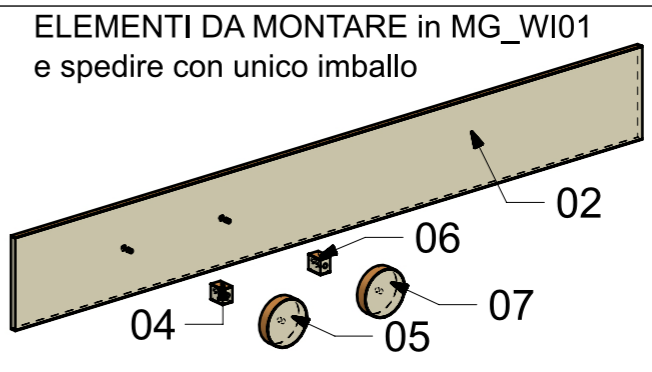
06



05



07



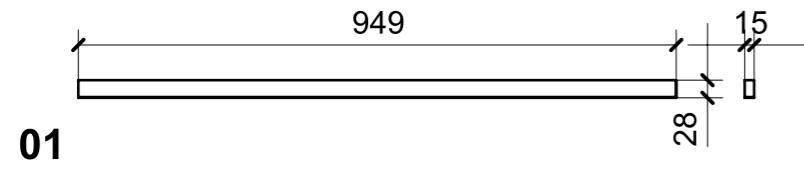
FERRAMENTA	QTY
BUSSOLA 6MA X 10 FORO DIAM.8 X APPENDIABITI	2
VITE 6MA X 20 TESTA SVASATA_FBC X APPENDIABITI	2

VERNICIATURA LASTRA/LACCATI:

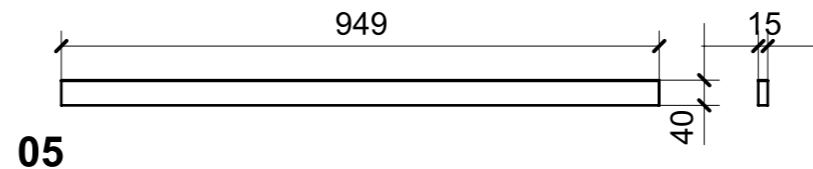
● = VERNICIARE 1 LATO + FILI RASATI O BORDATI

NESSUN SIMBOLO = VERNICIARE 2 LATI + FILI RASATI O BORDATI

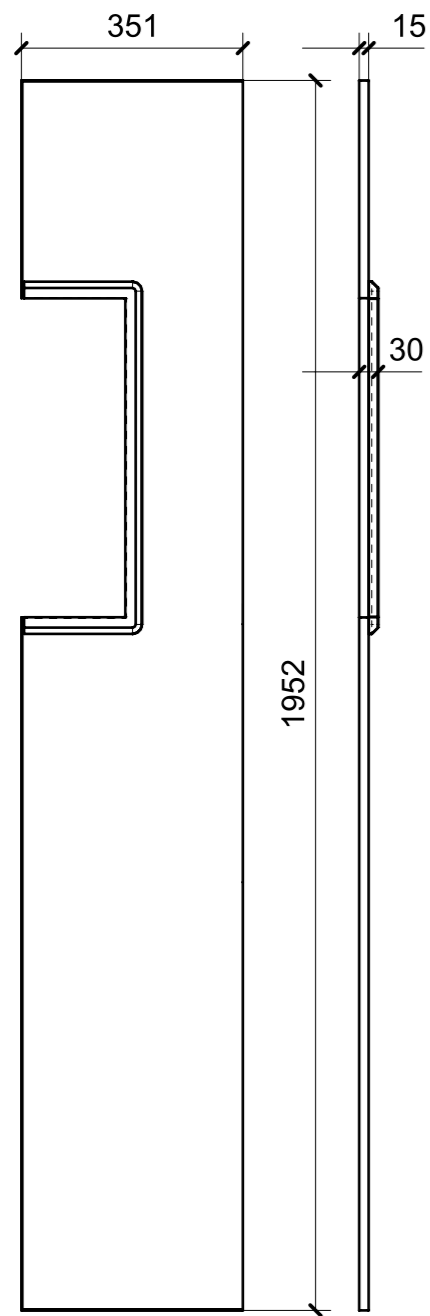
LOCALE	CODICE	DESCRIZIONE COMPONENTE	FINITURA	Q.TA
BAGNO ARMATORE	MD299_R01_WL01	PANNELLO DOCCIA	IROKO	1



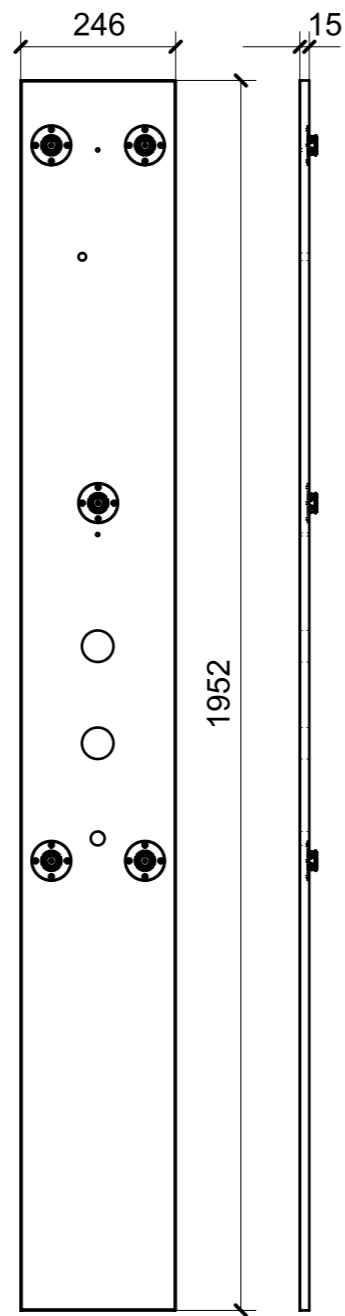
01



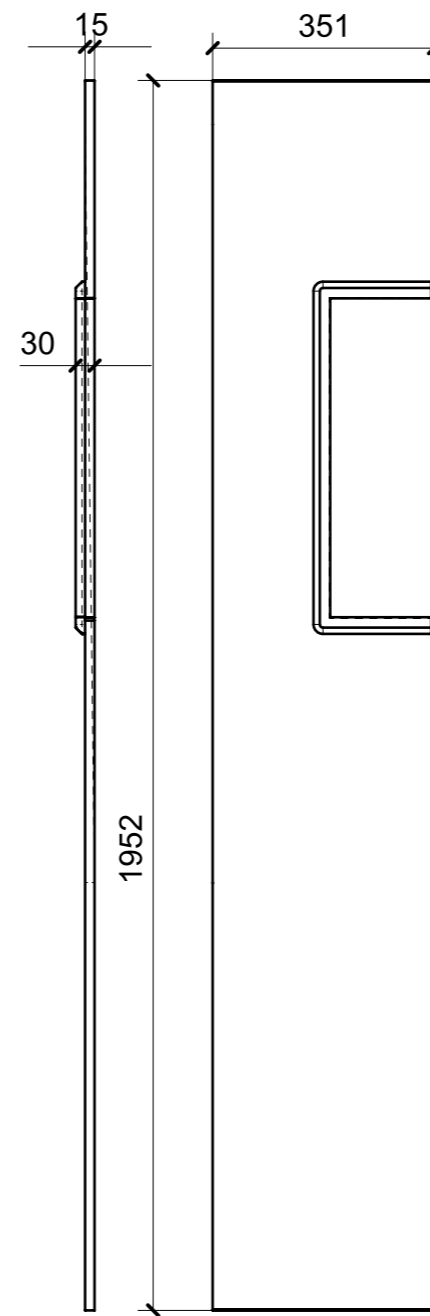
05



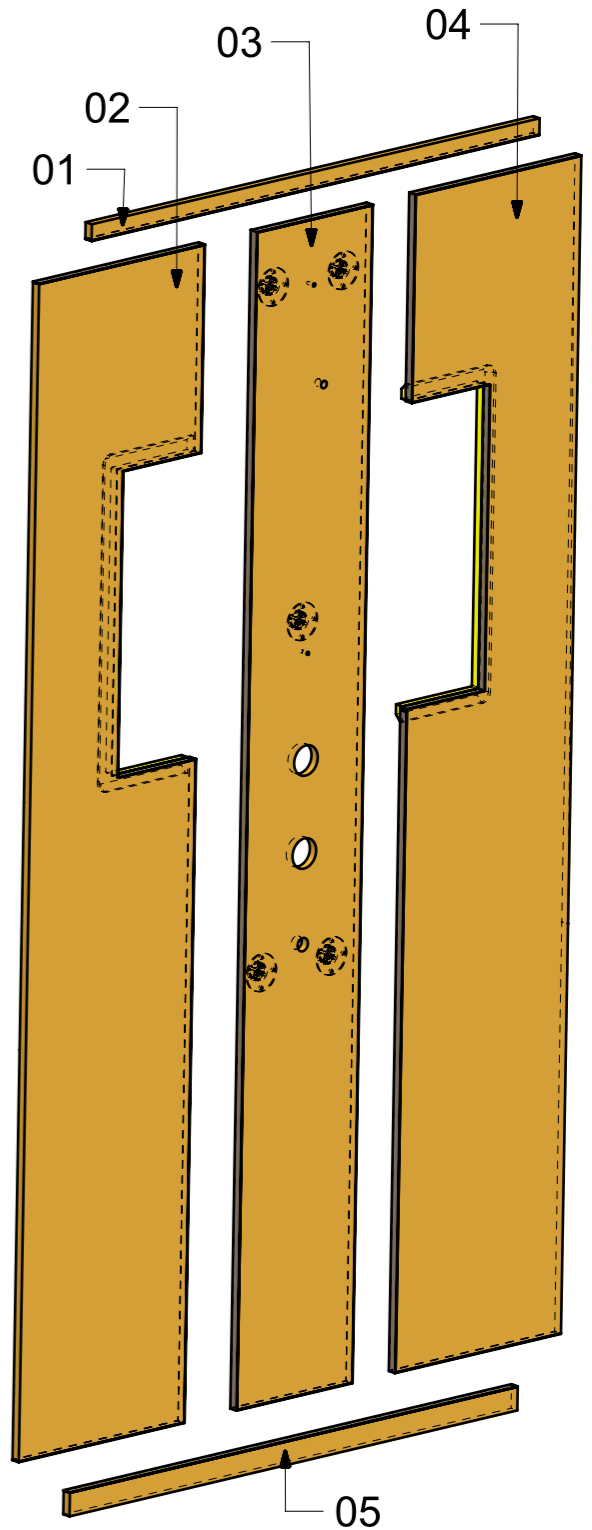
02



03



04



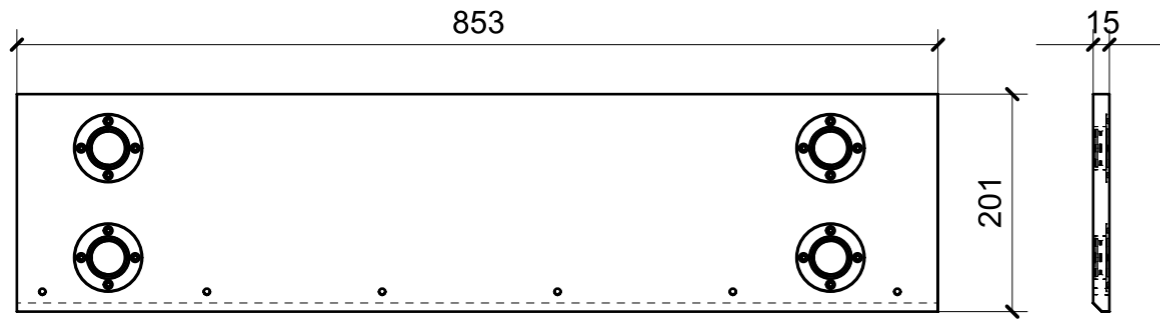
FERRAMENTA	QTY
FITLOCK M_MASCHERPA_3MM_6020202101	5

VERNICIATURA LASTRA/LACCATI:

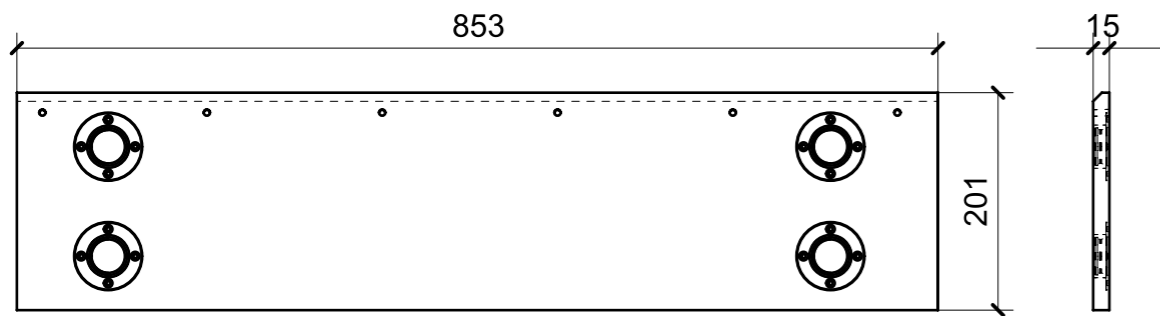
● = VERNICIARE 1 LATO + FILI RASATI O BORDATI

NESSUN SIMBOLO = VERNICIARE 2 LATI + FILI RASATI O BORDATI

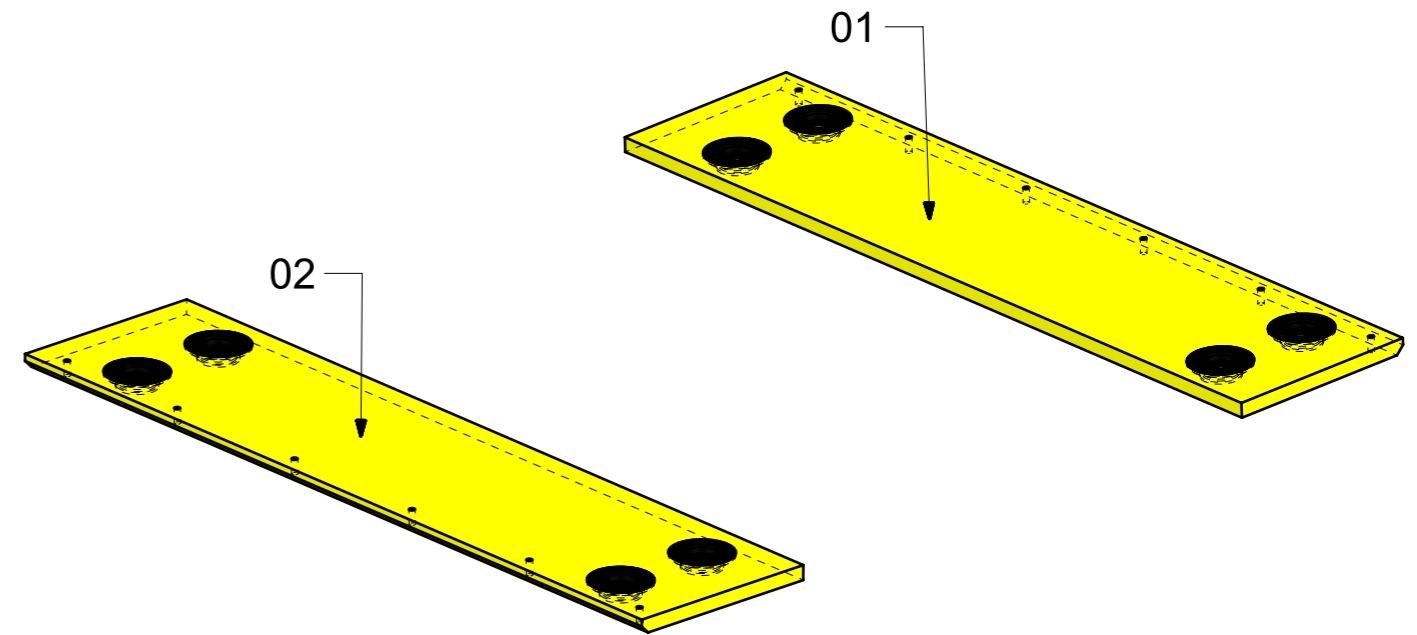
LOCALE	CODICE	DESCRIZIONE COMPONENTE	FINITURA	Q.TA
BAGNO ARMATORE	MD299_WM01	CARABOTTINO	OKUME' GREZZO	1



01

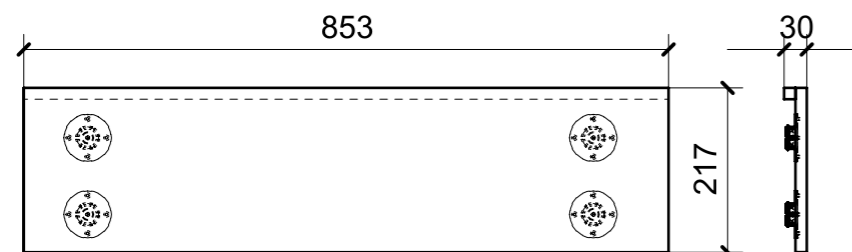


02

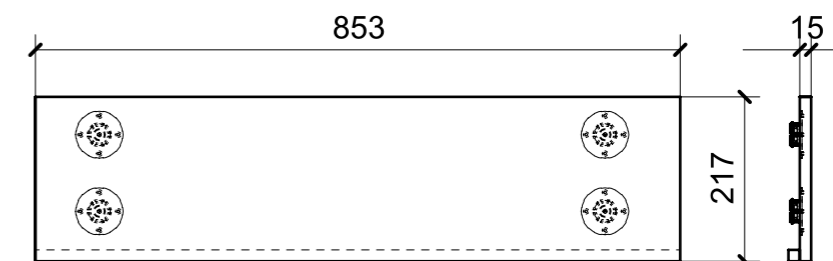


FERRAMENTA	QTY
FITLOCK F_MASCHERPA_6020101102	8

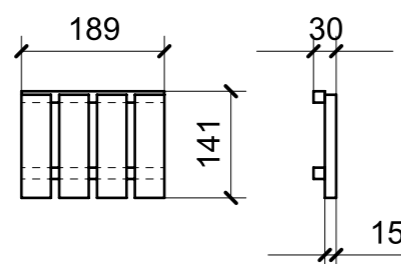
LOCALE	CODICE	DESCRIZIONE COMPONENTE	FINITURA	Q.TA
BAGNO ARMATORE	MD299_R01_WM01	CARABOTTINO	IROKO	1



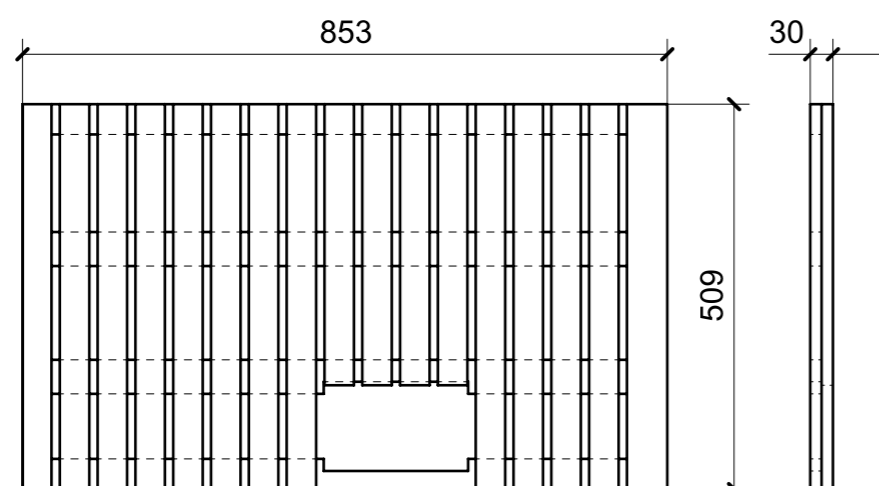
01



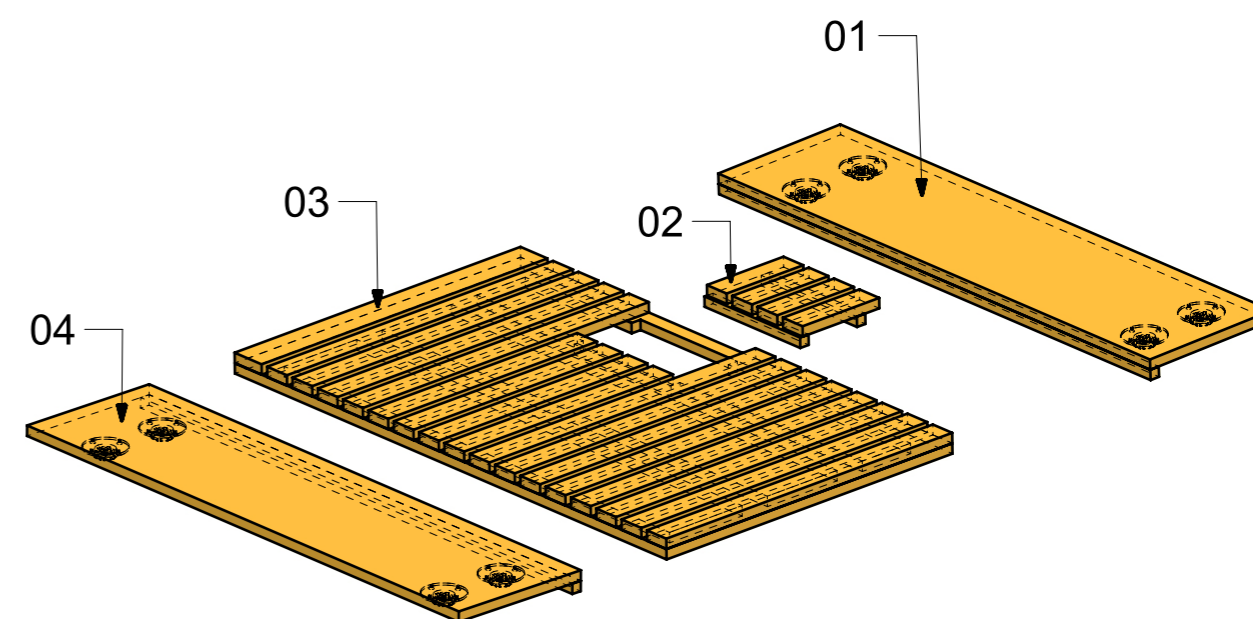
04



02



03



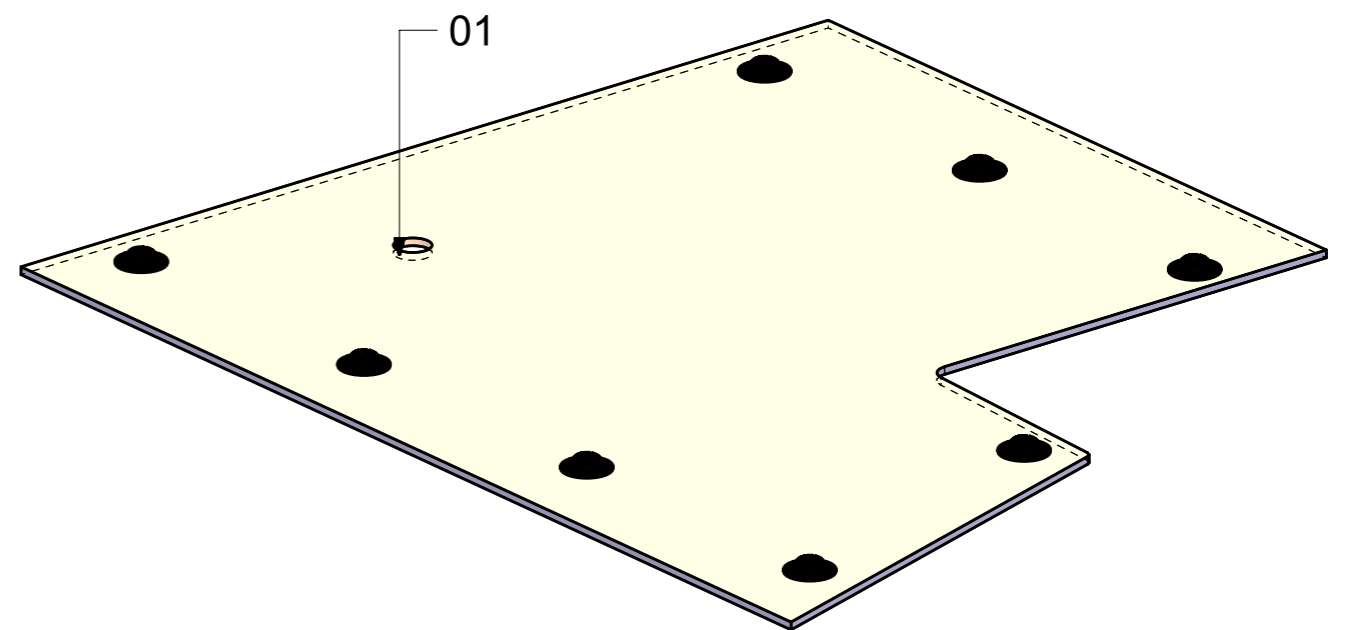
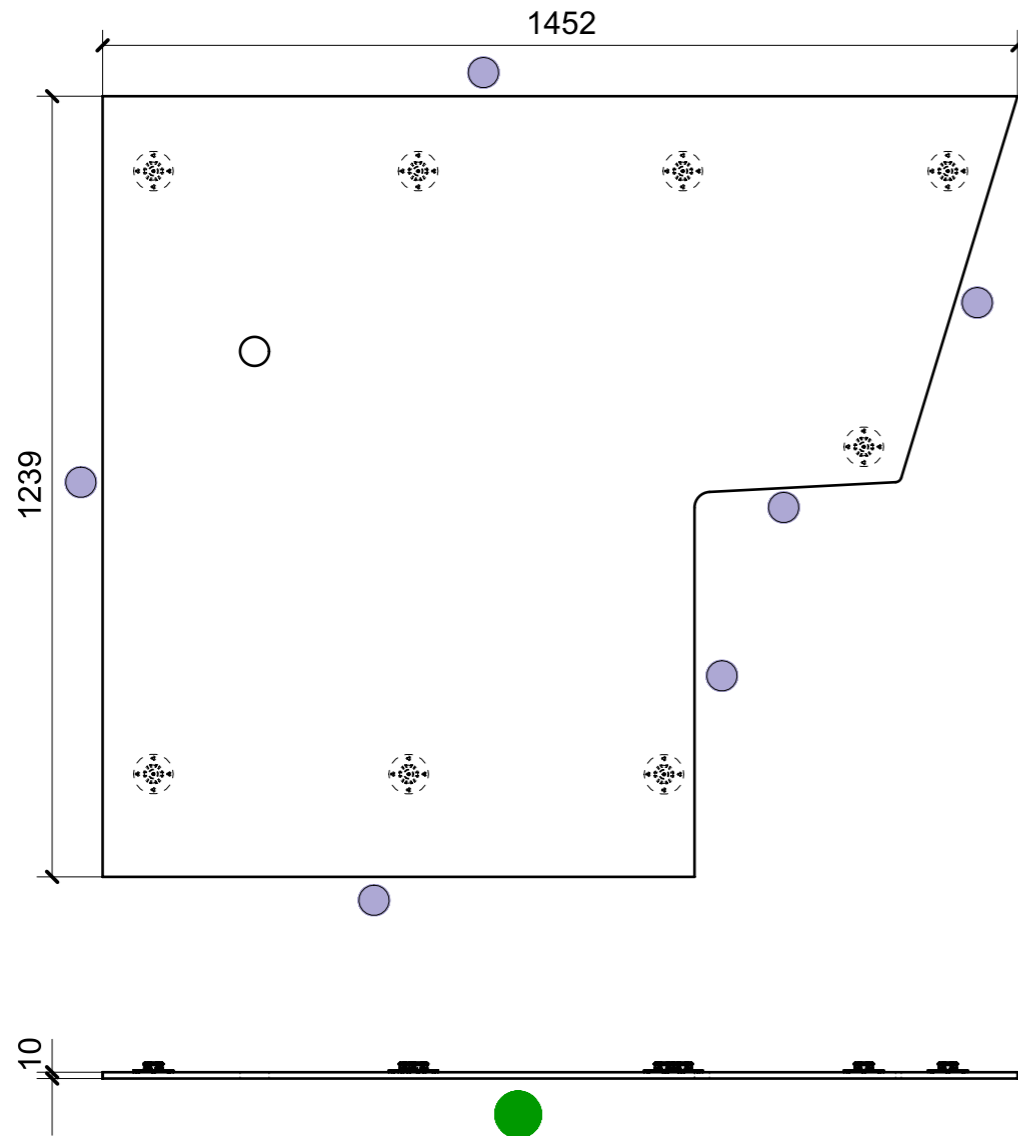
FERRAMENTA	QTY
FITLOCK M_MASCHERPA_3MM_6020202101	8

VERNICIATURA LASTRA/LACCATI:

● = VERNICIARE 1 LATO + FILI RASATI O BORDATI

NESSUN SIMBOLO = VERNICIARE 2 LATI + FILI RASATI O BORDATI

LOCALE	CODICE	DESCRIZIONE COMPONENTE	FINITURA	Q.TA
BAGNO ARMATORE	MD299_L01_WO01	CIELINO INGRESSO	LACCATO BIANCO 9010	1

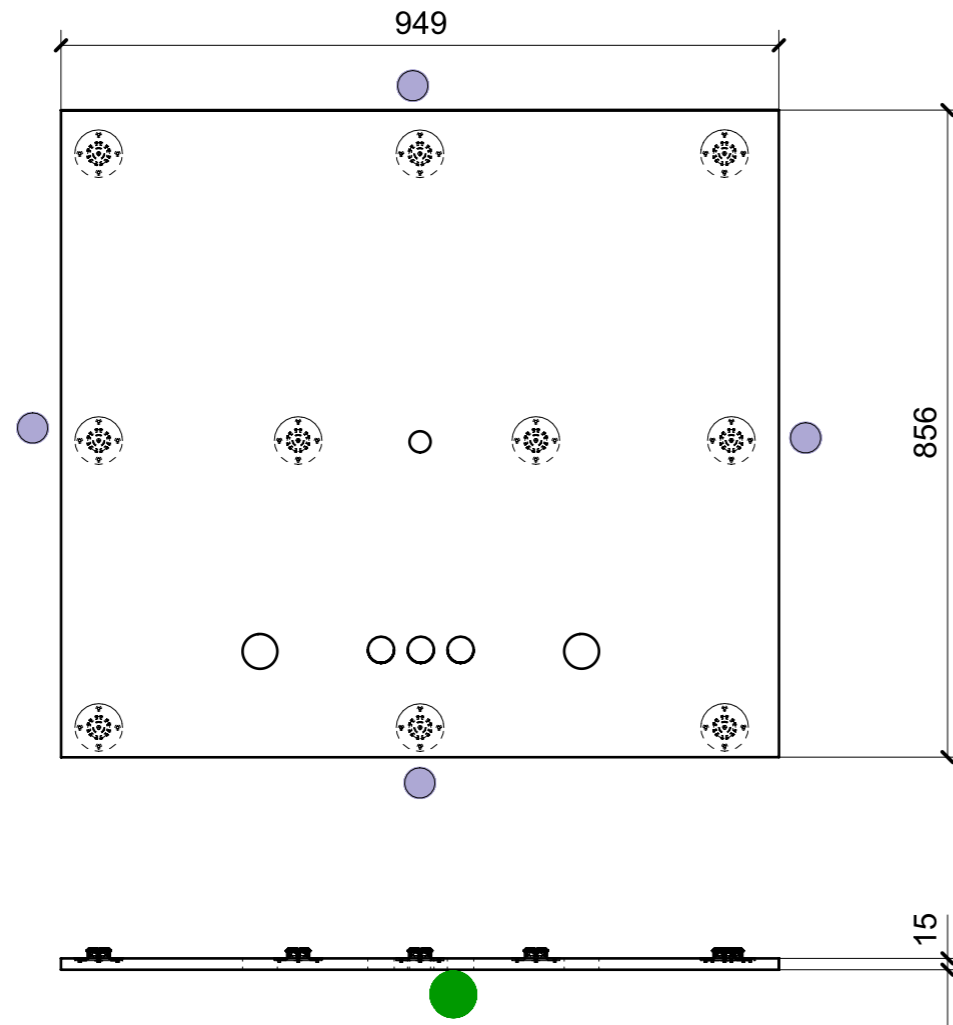


FERRAMENTA	QTY
FITLOCK M_MASCHERPA_3MM_6020202101	8

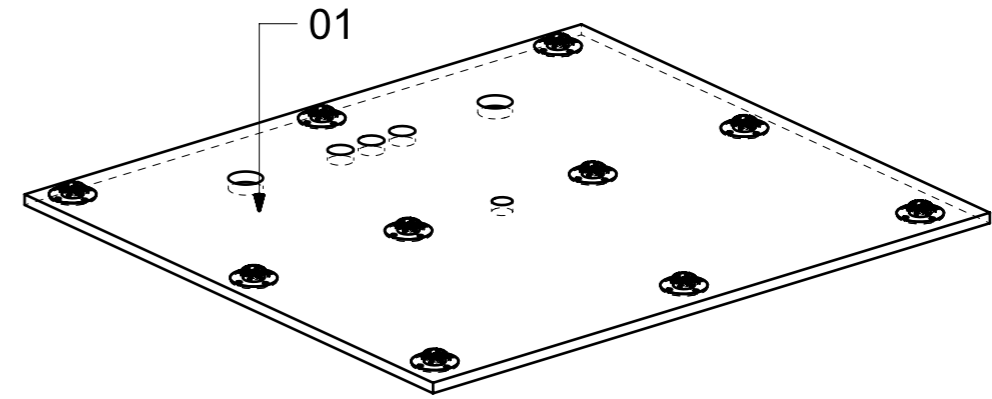
01

VERNICIATURA LASTRA/LACCATI:
 ● = FILI RASATI ● = VERNICIARE 1 LATO + FILI RASATI O BORDATI NESSUN SIMBOLO = VERNICIARE 2 LATI + FILI RASATI O BORDATI

LOCALE	CODICE	DESCRIZIONE COMPONENTE	FINITURA	Q.TA
BAGNO ARMATORE	MD299_L01_WP01	CIELINO DOCCIA	LACCATO BIANCO 9010	1



01



FERRAMENTA	QTY
FITLOCK M_MASCHERPA_3MM_6020202101	10

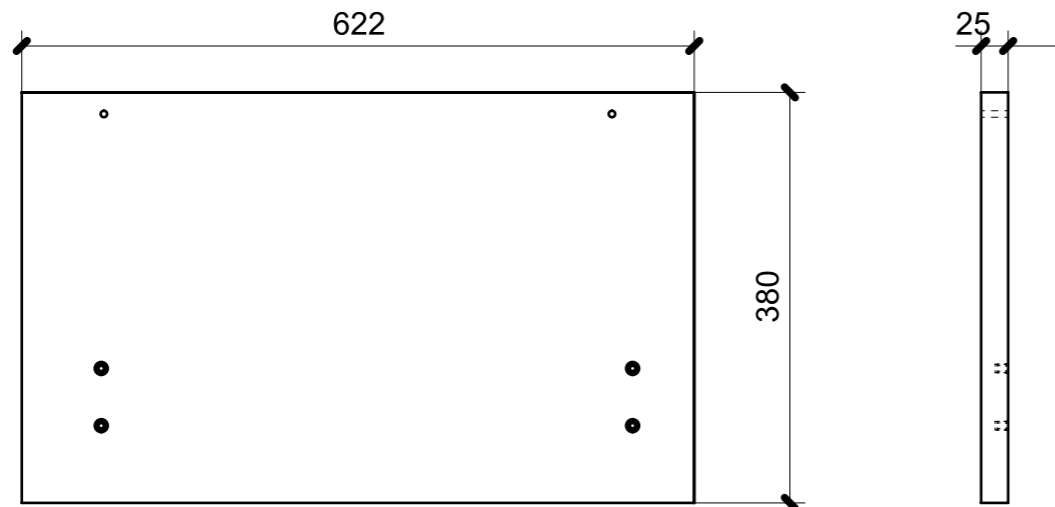
VERNICIATURA LASTRA/LACCATI:

● = FILI RASATI

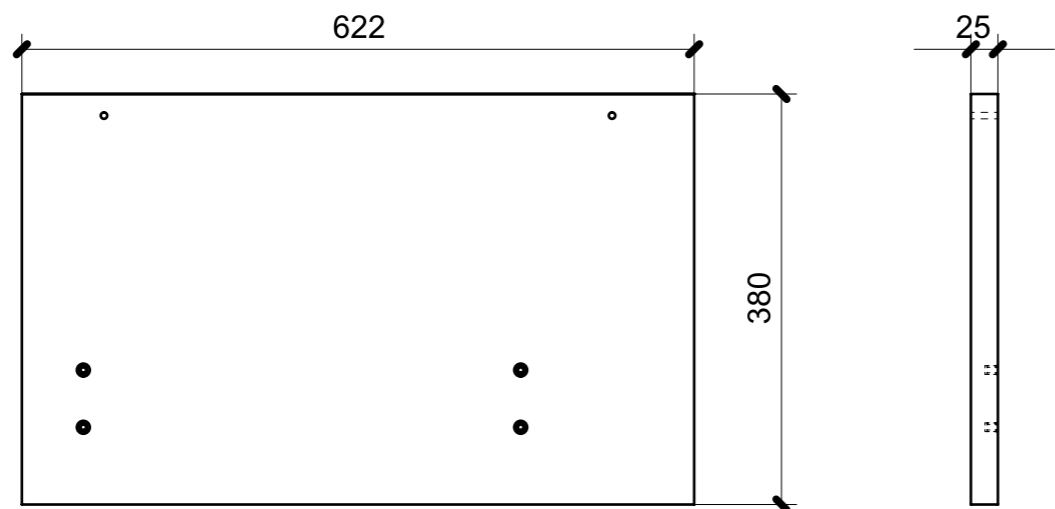
● = VERNICIARE 1 LATO + FILI RASATI O BORDATI

NESSUN SIMBOLO = VERNICIARE 2 LATI + FILI RASATI O BORDATI

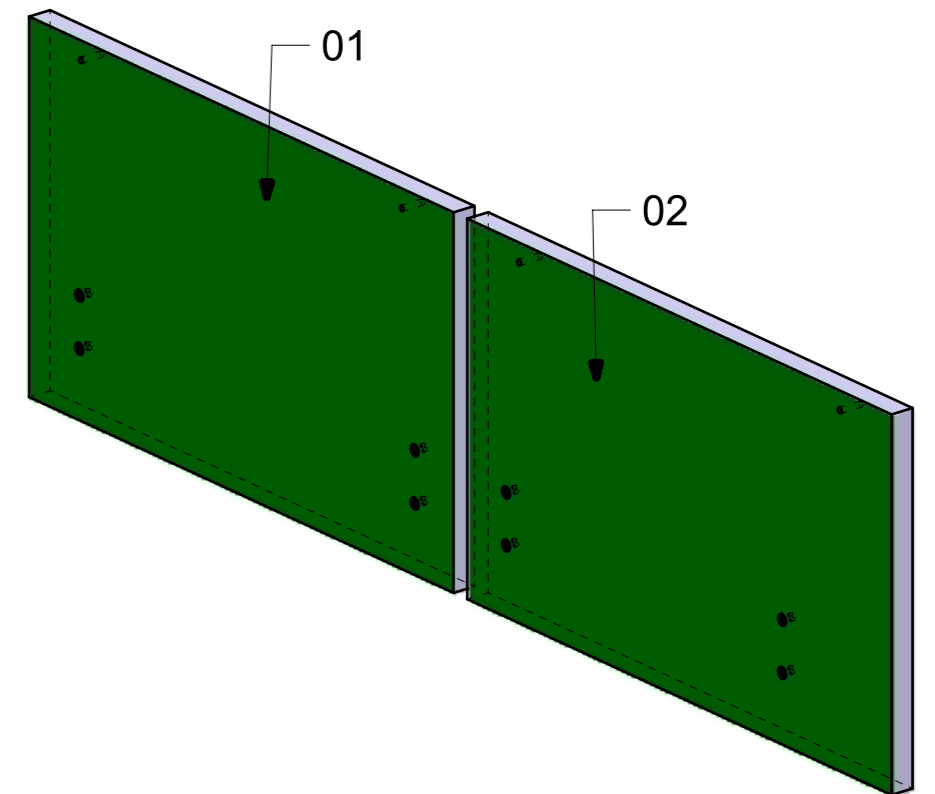
LOCALE	CODICE	DESCRIZIONE COMPONENTE	FINITURA	Q.TA
BAGNO ARMATORE	MD299_L01_WR01	ANTE MOBILE LAVELLO_STD VAR 2 VERDE 100 GLOSS	LACCATO VERDE NCS S 5020 B70G LUCIDO 100 gloss	1



01



02



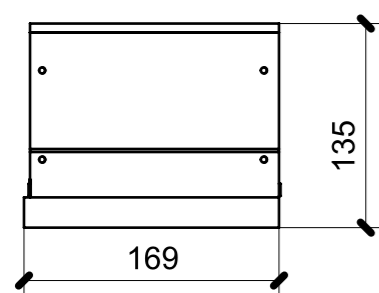
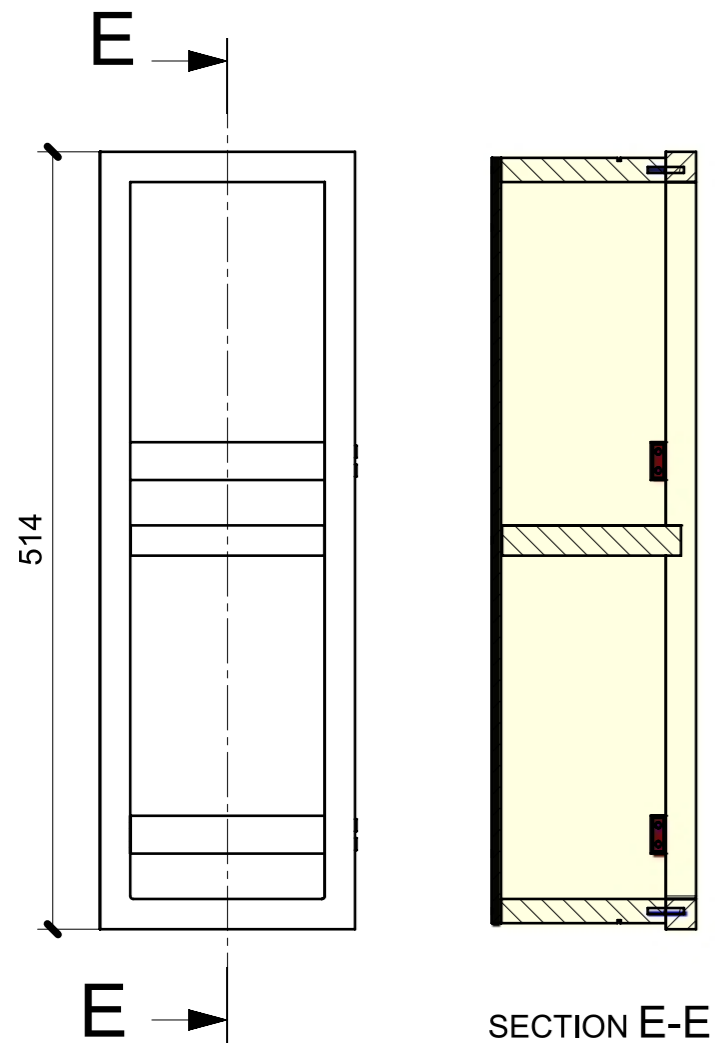
FERRAMENTA	QTY
BUSSOLA 5MA X 10 FORO DIAM.8	8

VERNICIATURA LASTRA/LACCATI:

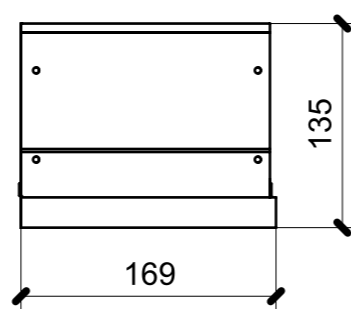
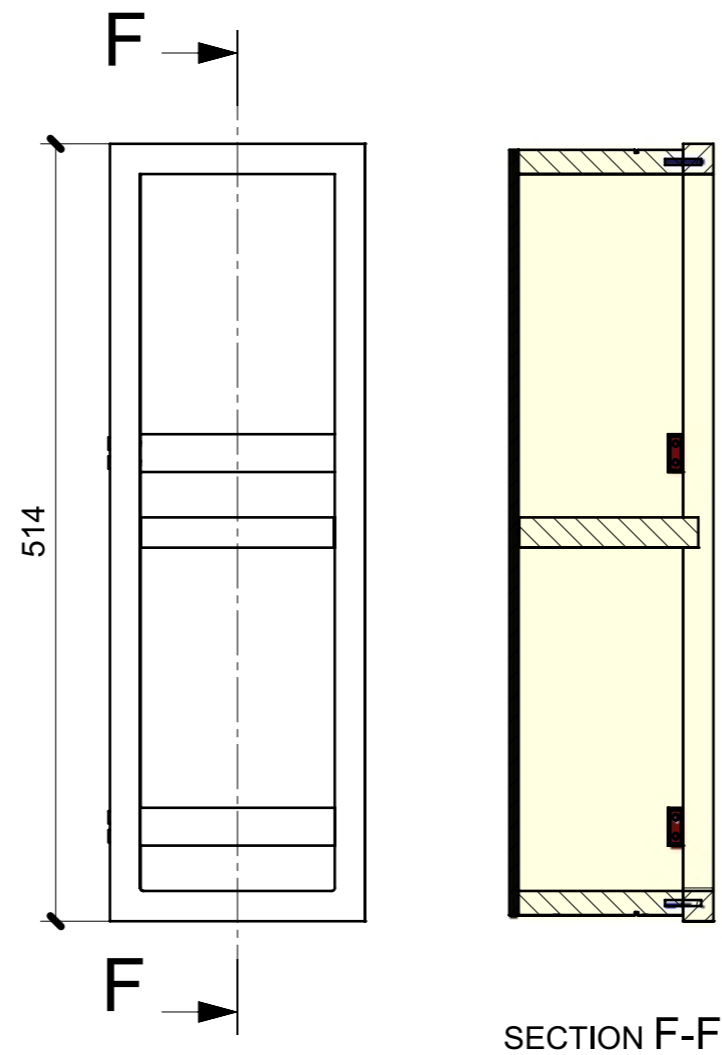
● = VERNICIARE 1 LATO + FILI RASATI O BORDATI

NESSUN SIMBOLO = VERNICIARE 2 LATI + FILI RASATI O BORDATI

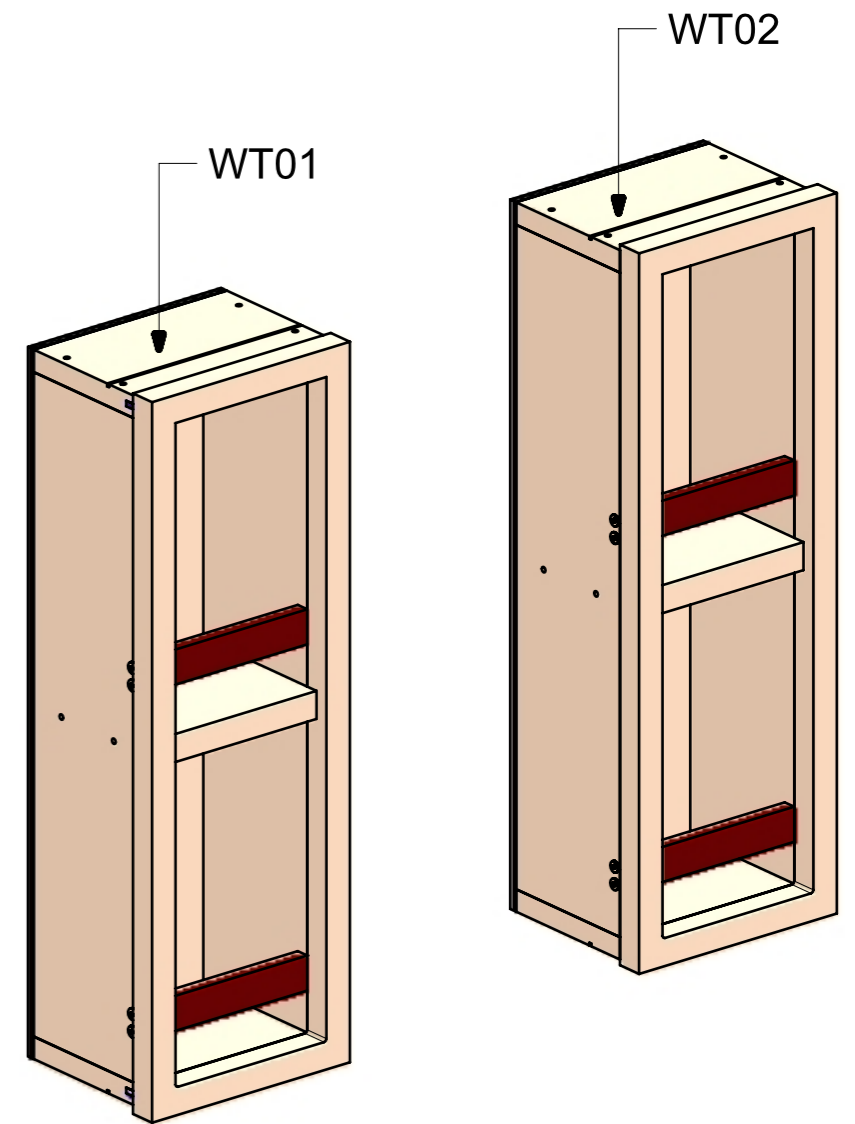
LOCALE	CODICE	DESCRIZIONE COMPONENTE	FINITURA	Q.TA
BAGNO ARMATORE	MD299_MF_WT01/02	NICCHIE PANNELLO DOCCIA		1



MF_WT01

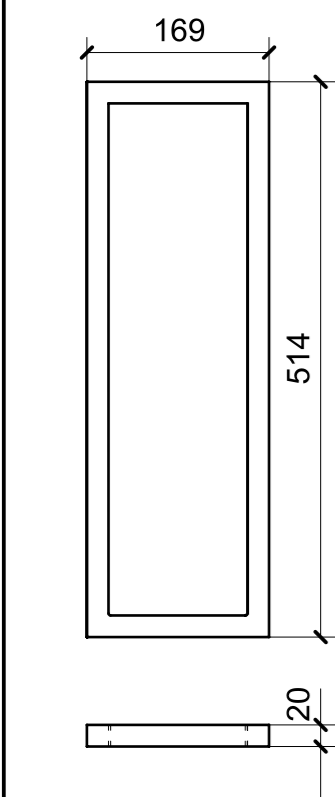


MF_WT02

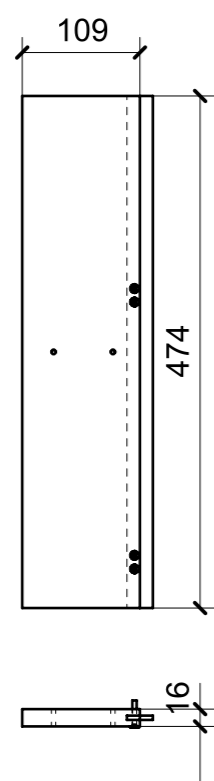


FERRAMENTA	QTY
FITLOCK F_MASCHERPA_6020101102	5
VITE 4MA X 25 TESTA SVASATA ESAGONALE NERA	16

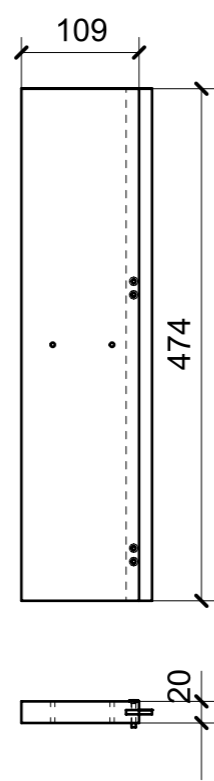
LOCALE	CODICE	DESCRIZIONE COMPONENTE	FINITURA	Q.TA
BAGNO ARMATORE	MD299_L01_WT01	NICCHIE PANNELLO DOCCIA	LACCATO BIANCO 9010	1



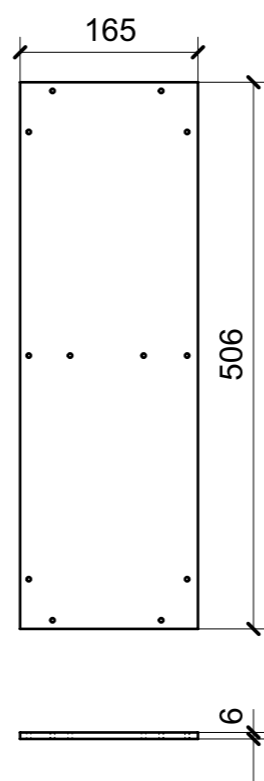
01



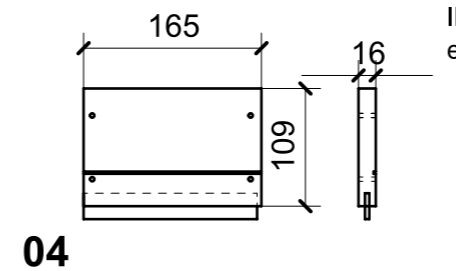
02



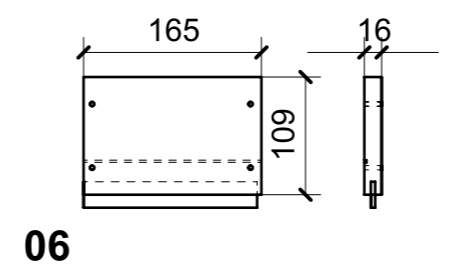
05



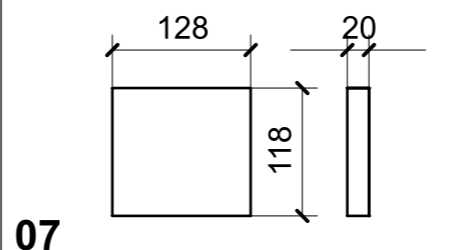
03



04

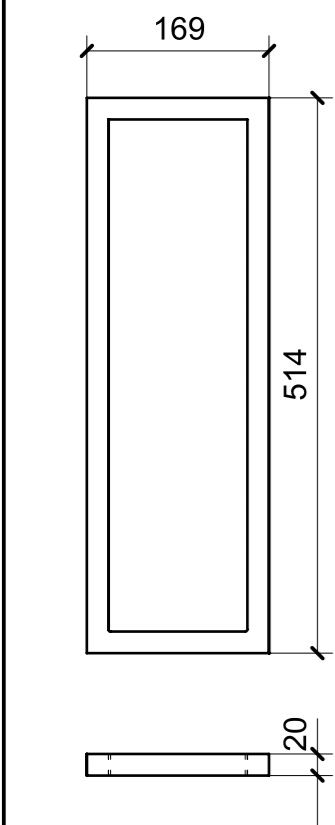
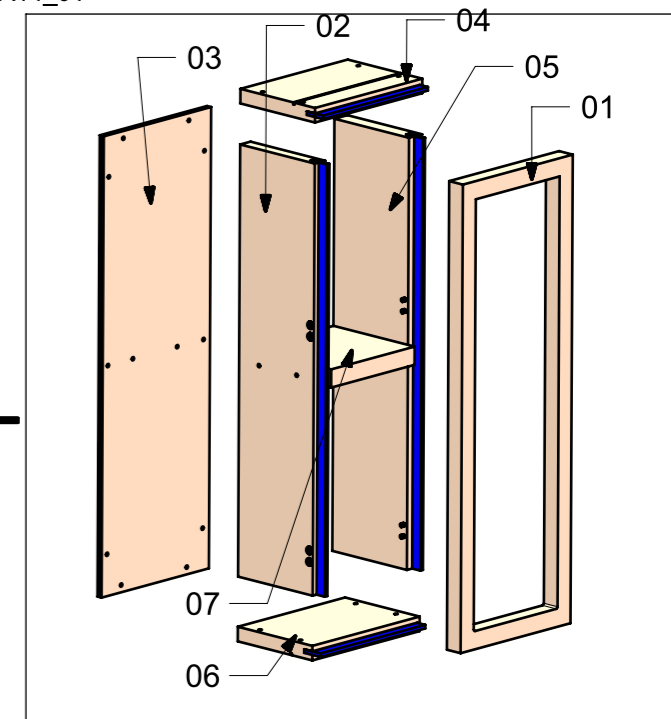


06

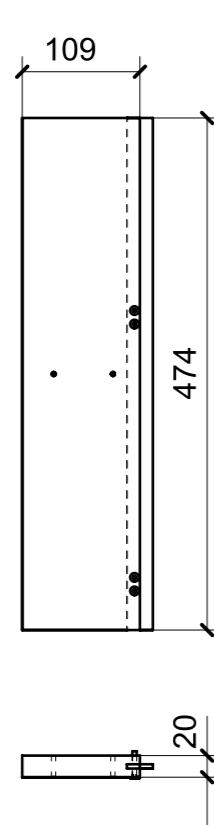


07

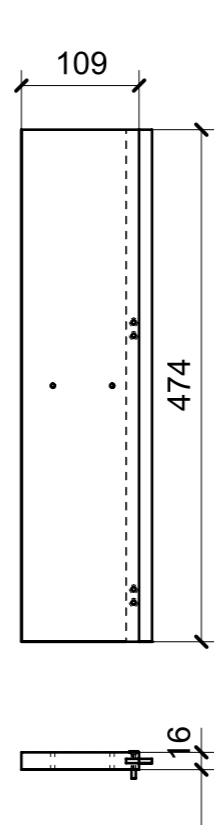
ELEMENTI DA MONTARE CON A14_01
IN MF_WT01
e spedire con unico imballo



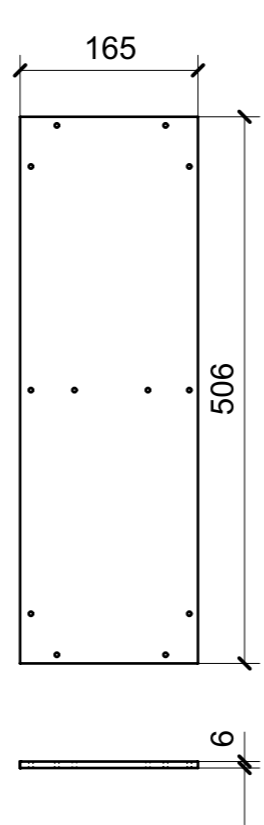
08



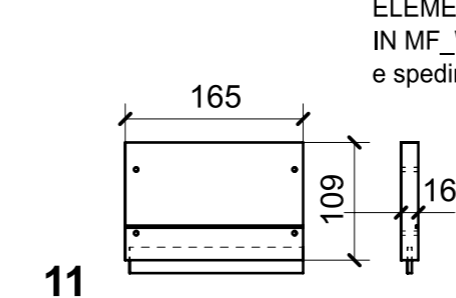
09



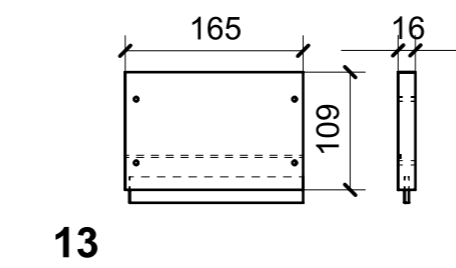
12



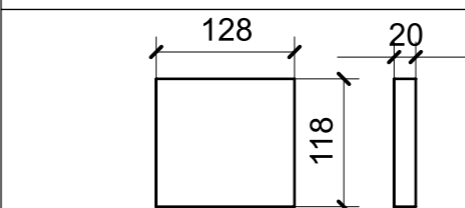
10



11

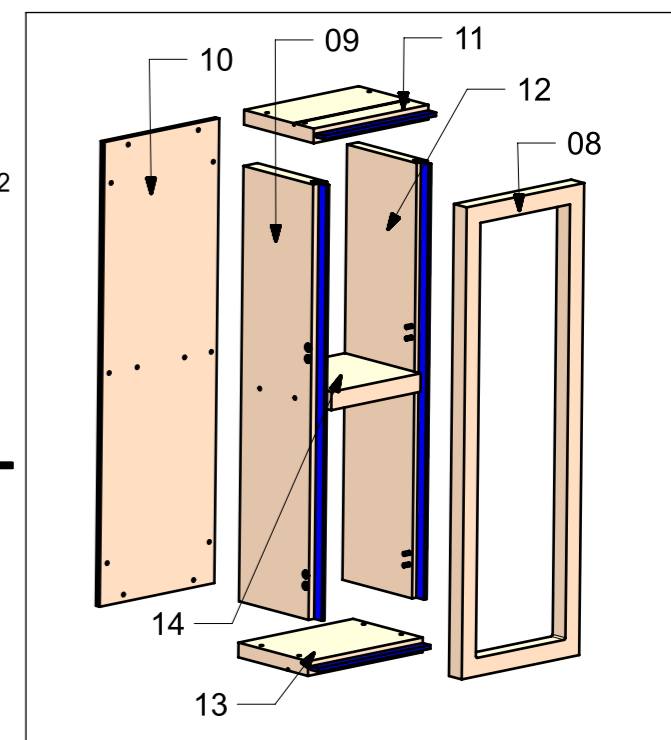
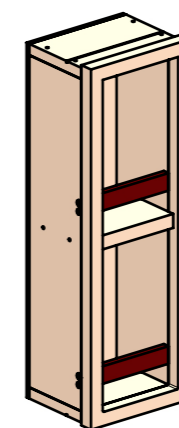


13



14

ELEMENTI DA MONTARE CON A14_02
IN MF_WT02
e spedire con unico imballo



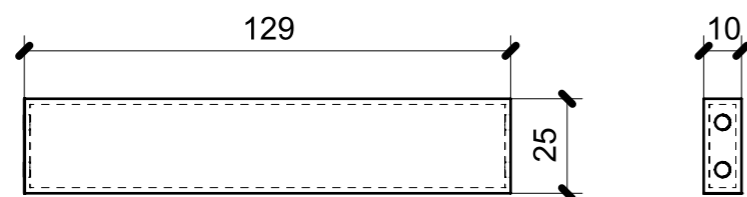
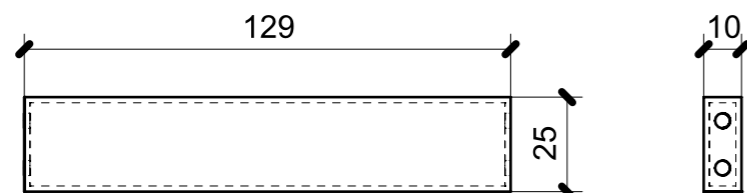
FERRAMENTA	QTY
VITE 4MA X 25 TESTA SVASATA ESAGONALE NERA	16

VERNICIATURA LASTRA/LACCATI:

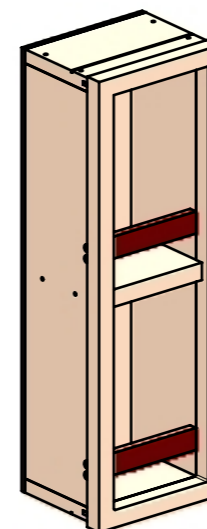
● = VERNICIARE 1 LATO + FILI RASATI O BORDATI

NESSUN SIMBOLO = VERNICIARE 2 LATI + FILI RASATI O BORDATI

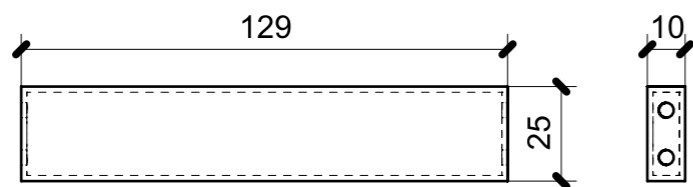
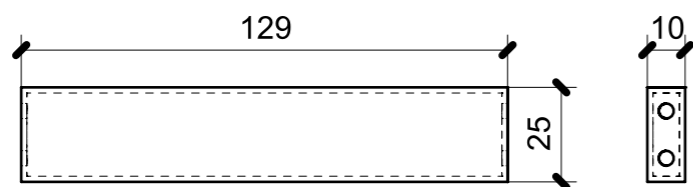
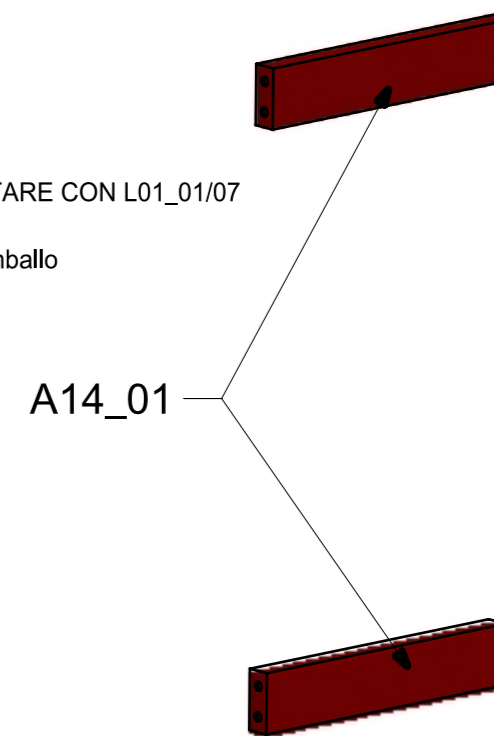
LOCALE	CODICE	DESCRIZIONE COMPONENTE	FINITURA	Q.TA
BAGNO ARMATORE	MD299_A01_WT01	NICCHIE PANNELLO DOCCIA	ACCIAIO BRONZO	1



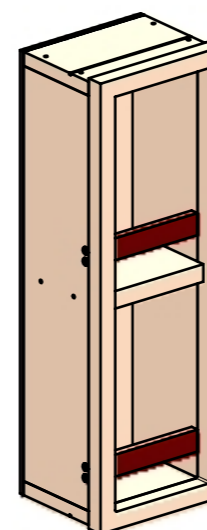
A14_01
(n° 2 pezzi uguali)



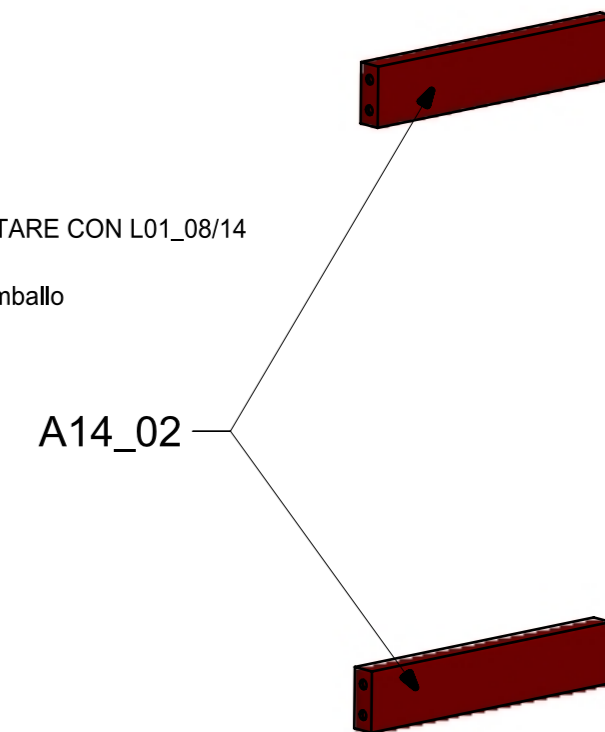
← ELEMENTI DA MONTARE CON L01_01/07
IN MF_WT01
e spedire con unico imballo



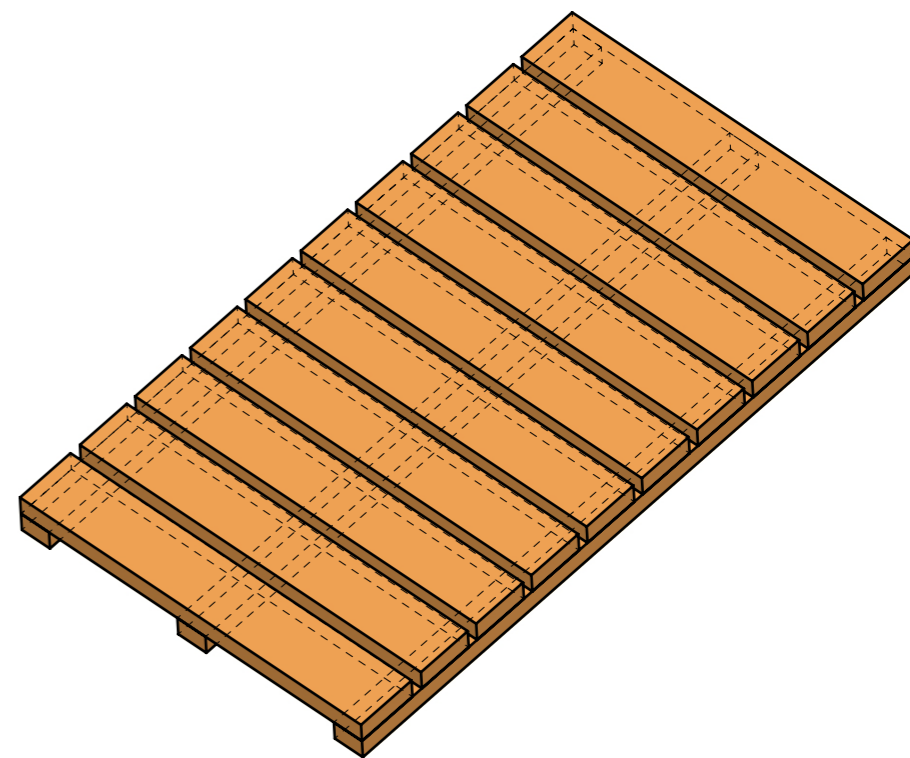
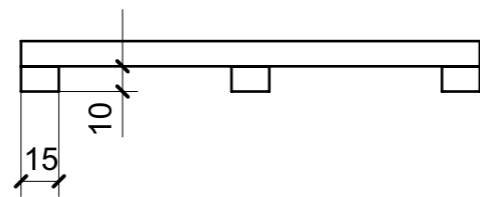
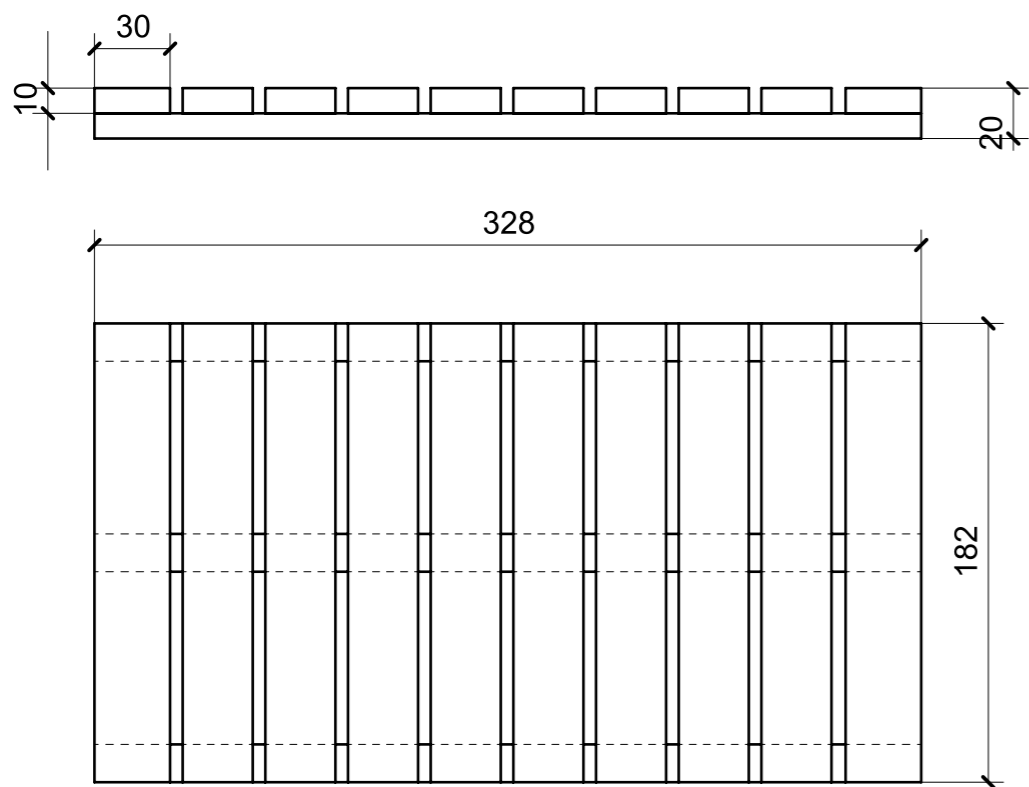
A14_02
(n° 2 pezzi uguali)



← ELEMENTI DA MONTARE CON L01_08/14
IN MF_WT02
e spedire con unico imballo



LOCALE	CODICE	DESCRIZIONE COMPONENTE	FINITURA	Q.TA
BAGNO ARMATORE	MD299_R01_WU01	PORTASAPONE TEAK_OPT	TEAK	1



VERNICIATURA LASTRA/LACCATI:



= VERNICIARE 1 LATO + FILI RASATI O BORDATI

NESSUN SIMBOLO = VERNICIARE 2 LATI + FILI RASATI O BORDATI