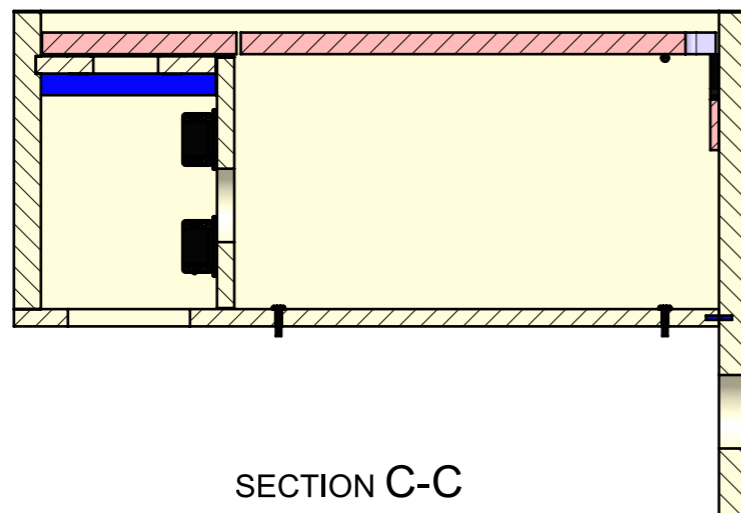
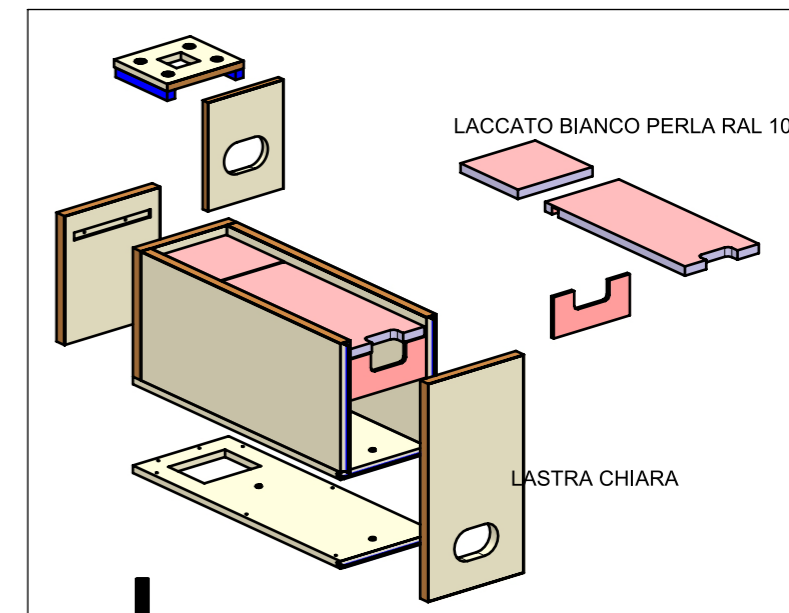
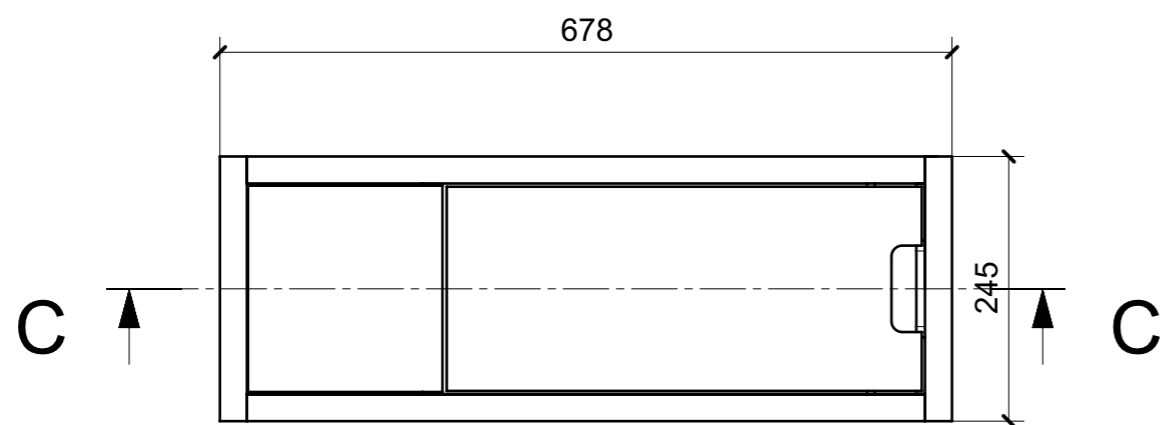
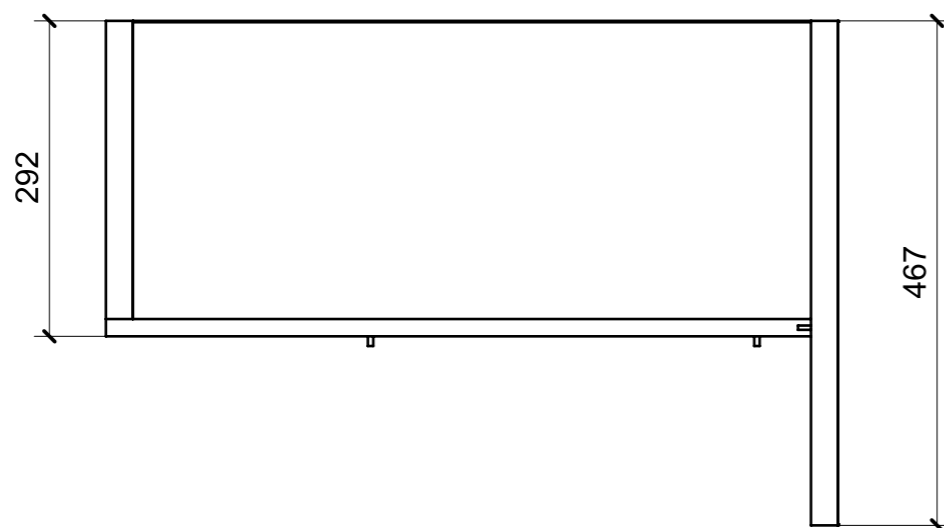
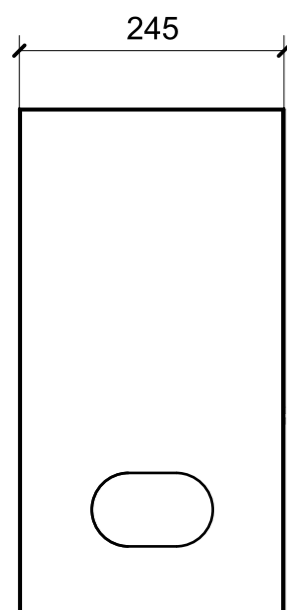


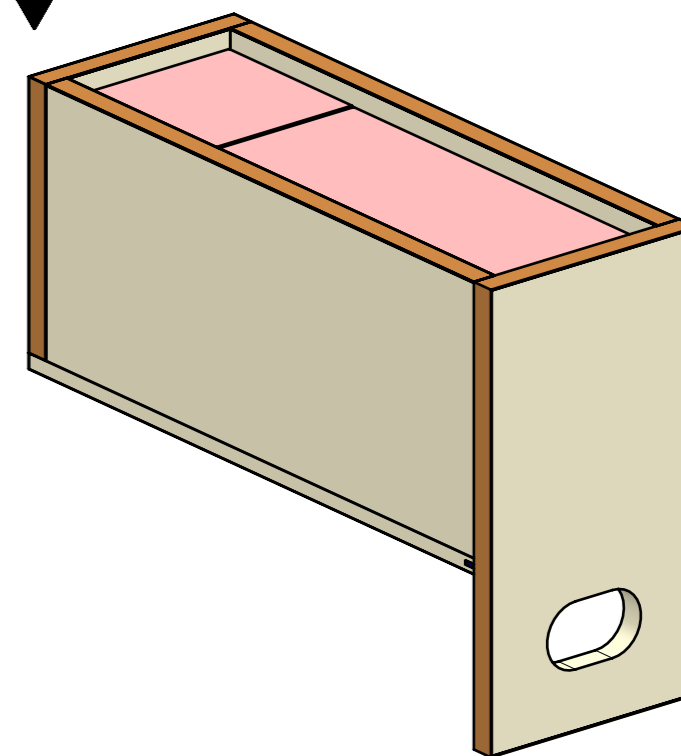
LOCALE	CODICE	DESCRIZIONE COMPONENTE	FINITURA	GR
CABINA OSPITI	MD298_MF_RB01	COMODINO		8



SECTION C-C

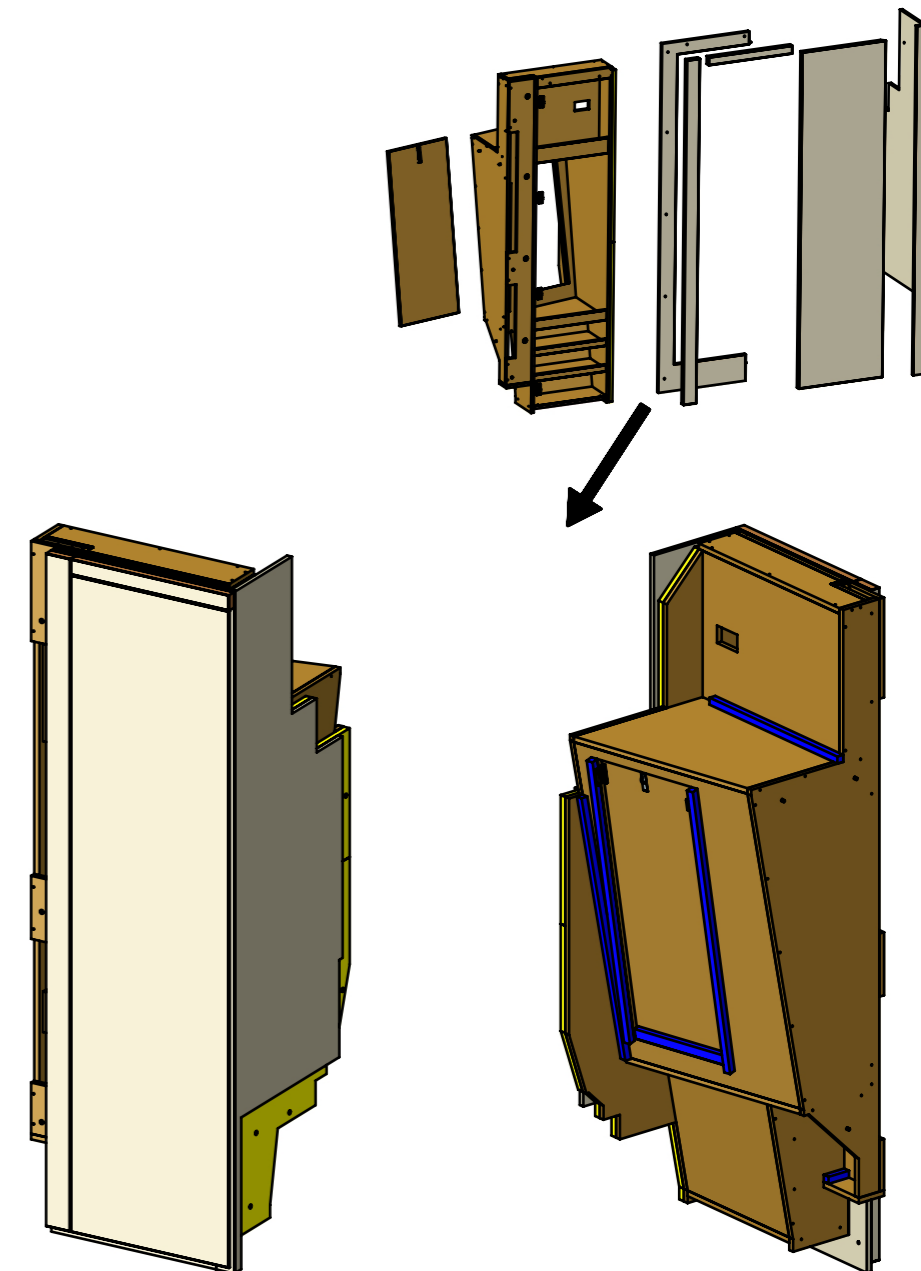
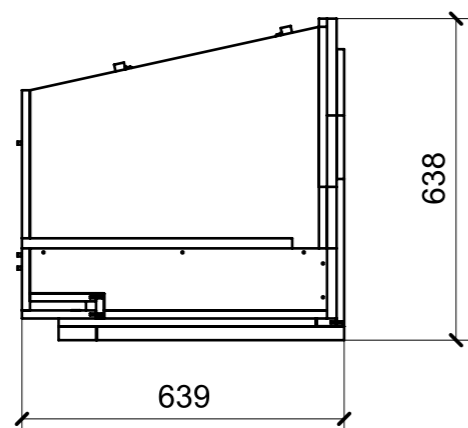
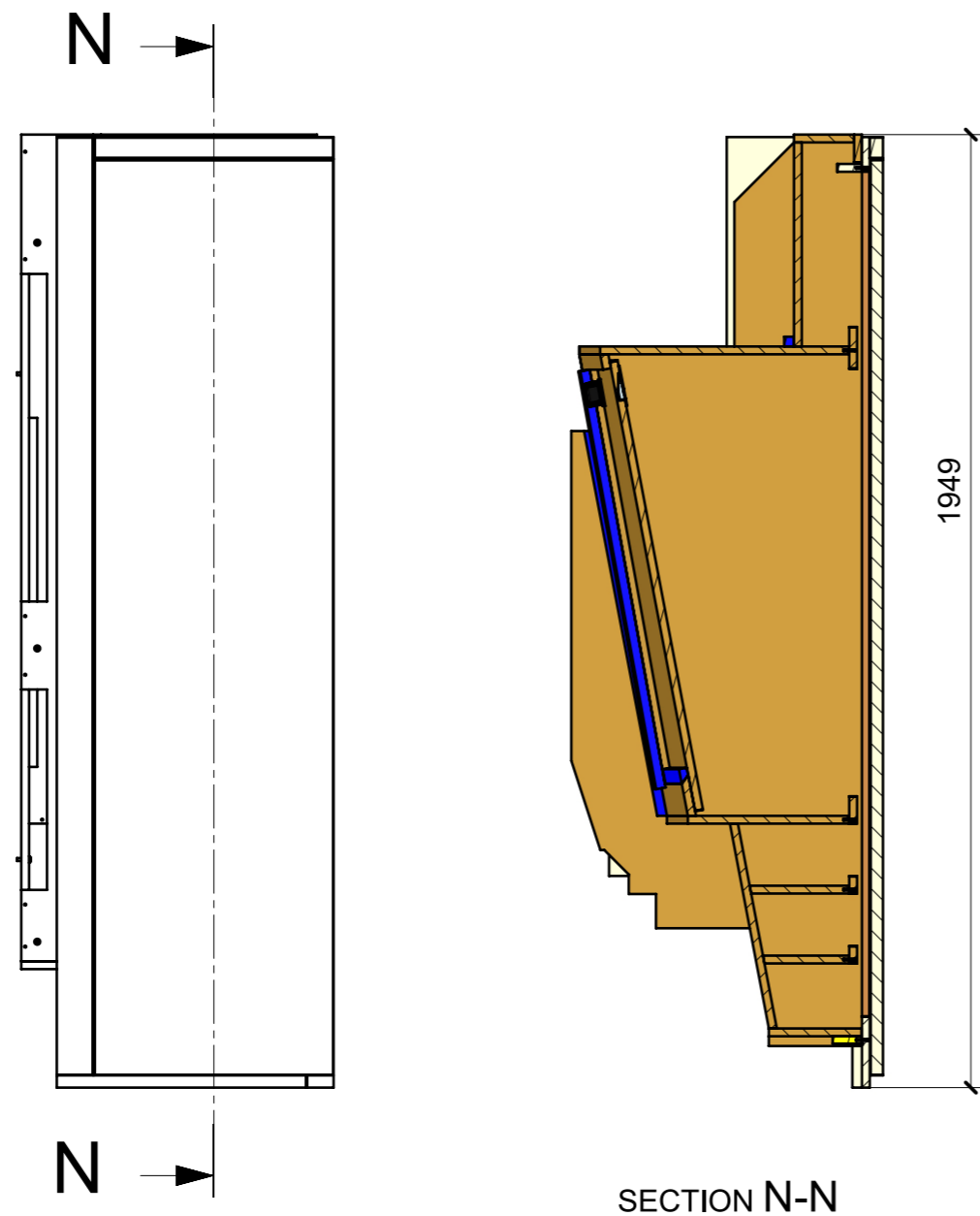


ELEMENTI DA MONTARE
in MF_RB01
e spedire con unico imballo



FERRAMENTA	QTY
MS INCASSO_ITALVIPLA_972_FMPC_M1B	4
CHIUSURA A SPINTA_TECHNOPARTNER_SOU C3-203	8
FM INCASSO_ITALVIPLA_973_FMPC_F1A	8
REGGIRIPIANO CON FILETTATURA M4_HAFELE_282.39.705	4
VITE 5MA X 25 TESTA BOMBATA	4

LOCALE	CODICE	DESCRIZIONE COMPONENTE	FINITURA	GR
CABINA OSPITI	MD298_MF_RG01	ARMADIO		8



SECTION N-N

FERRAMENTA	QTY
ALZAPAGLIOLI_FORESTI_164.C	1
BASE_3-NERA_HAFELE_342.22.067-BLUM_175H3130.STP	4
BUSSOLA 5MA ANKOR BORGHI	16
BUSSOLA 5MA X 10 FORO DIAM.8	3
BUSSOLA 6MA X 10 FORO DIAM.8	5
CERNIERA 94°_PIANA-NERA_HAFELE_342.46.604-BLUM_71B9550.STP	4
CHIUSURA A SPINTA_TECHNOPARTNER_SOU C3-203	2
COPERTURA BRACCIO CERNIERA NERO-HAFELE_342.94.602-BLUM_70.1503.STP	4
COPERTURA GABBIA CERNIERA NERO_HAFE_342.45.032-BLUM_70T3504.STP	4
FM INCASSO_ITALVIPLA_973_FMPC_F1A	4
GOMMINO PARACOLPO ANTA	2
MS INCASSO_ITALVIPLA_972_FMPC_M1B	4
VITE 4MAX8 ANKOR BORGHI	16
VITE 6MA X 25 TESTA BOMBATA	3

LOCALE	CODICE	DESCRIZIONE COMPONENTE	FINITURA	Q.TA
CABINA OSPITI	MD298_MF_RI01	RIVESTIMENTO PLENUM		1

