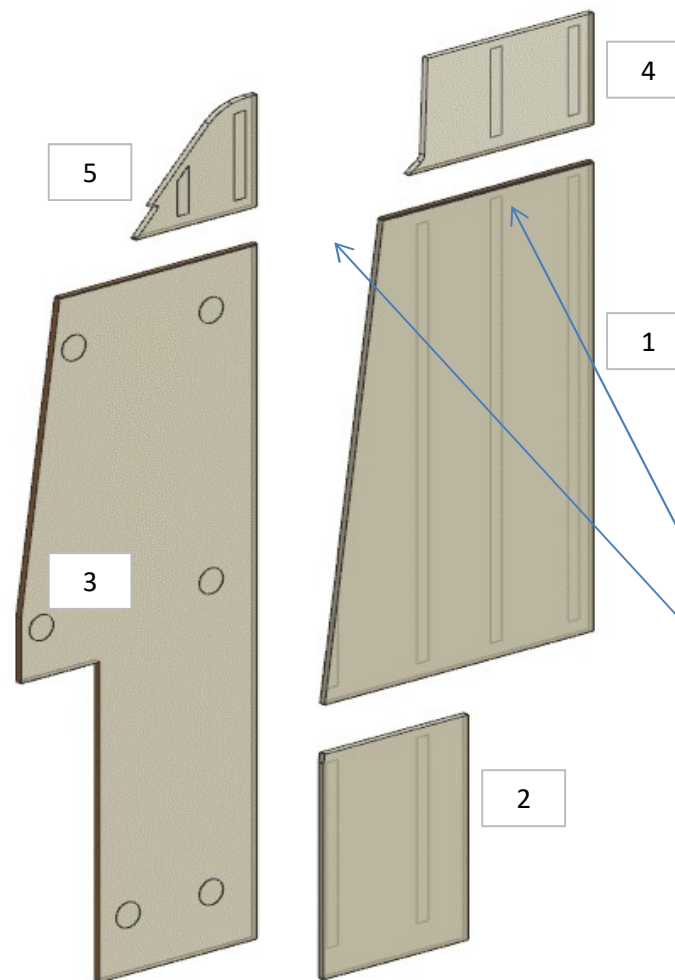


AZ68F

DA MAT. 233 REV. 29-04-2024

LOCALE	CODICE	DESCRIZIONE COMPONENTE	FINITURA	Q.TA	OPERATORE
SALONE A POPPA	AZ68F-R01_SSA01	PARETE DIVISORIA LATO POPPA	LASTRA CHIARA	5	Damiano

- 1 - L 712 x H 1151 x sp 16 mm
- 2 - L 383 x H 554 x sp 16 mm
- 3 - L 625 x H 1710 x sp 16 mm
- 4 - L 489 x H 275 x sp 16 mm
- 5 - L 321 x H 276 x sp 16 mm



MODIFICATE
MISURE PZ. 1 E 2
VERIFICARE



AZ68F

DA MAT.203

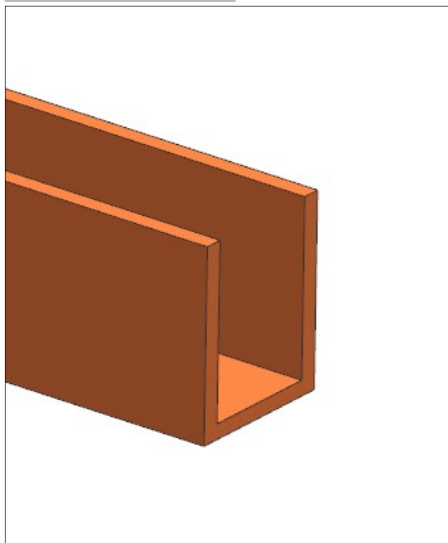
REV. 18-10-2022

LOCALE	CODICE	DESCRIZIONE COMPONENTE	FINITURA	Q.TA	OPERATORE
SALONE A POPPA	AZ68F-A01_SSA01	PARETE DIVISORIA LATO POPPA	ACCIAIO LACCATO BRONZO	1	Damiano

1 - L 1514 x H 40 x sp 17mm



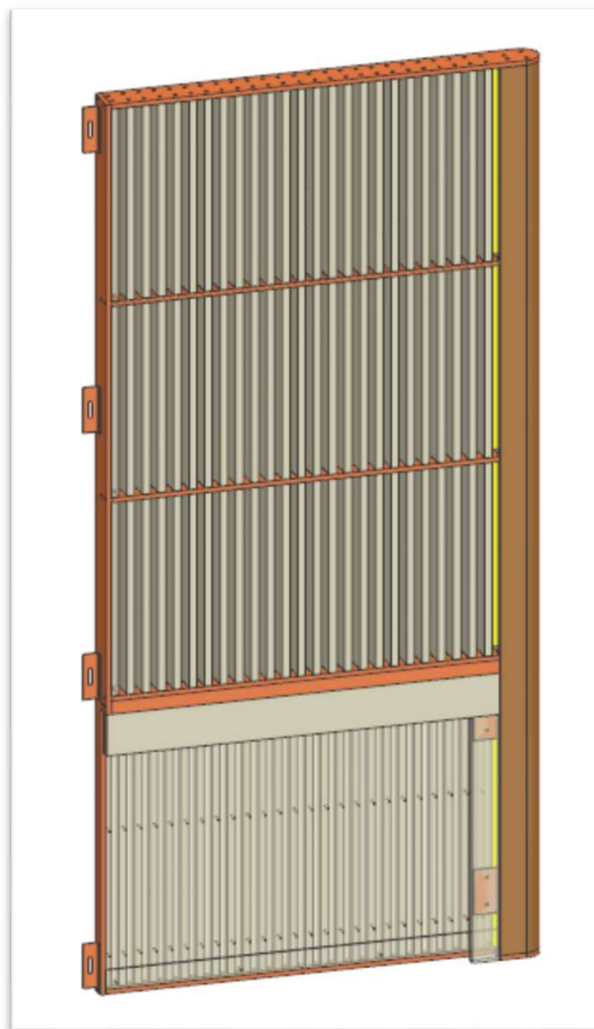
DETTAGLIO



AZ68F

DA MAT. 233 REV. 18-10-2022

LOCALE	CODICE	DESCRIZIONE COMPONENTE	FINITURA	Q.TA	OPERATORE
SALONE A POPPA	AZ68F-MF_SSB01	LANTERNA DIVISORIA PRUA			Damiano



FERRAMENTA:

N° 75 - BUSSOLA ZAMA 6MA

AZ68F

DA MAT. 233 REV. 29-04-2024

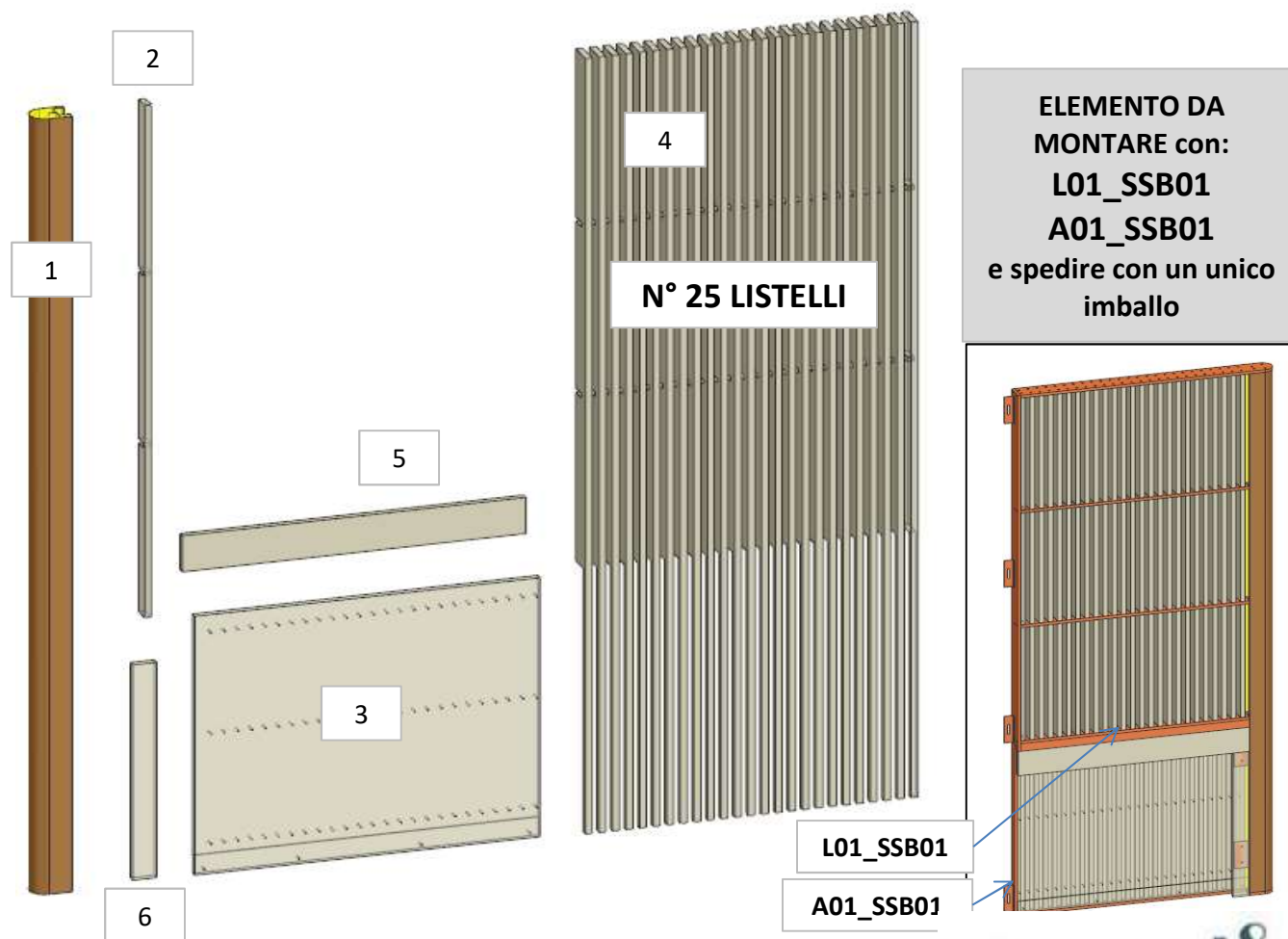
LOCALE	CODICE	DESCRIZIONE COMPONENTE	FINITURA	Q.TA	OPERATORE
SALONE A POPPA	AZ68F-R01_SSB01	LANTERNA DIVISORIA PRUA	LASTRA CHIARA	6	Damiano

- 1 - L.67 x H 1953 x 86
- 2 - L.40 x H 1953 x sp 25
- 3 - L.764,5 x H 652 x sp 16
- 4 - N° 25 LISTELLI =
L.65 x H 1953 x sp 15
- 5 - L.759 x H 91 x sp 16
- 6 - L.53 x H 542 x sp 16

AGGIUNTI PZ.
5 e 6

FERRAMENTA:

N° 75 - BUSSOLA ZAMA 6MA



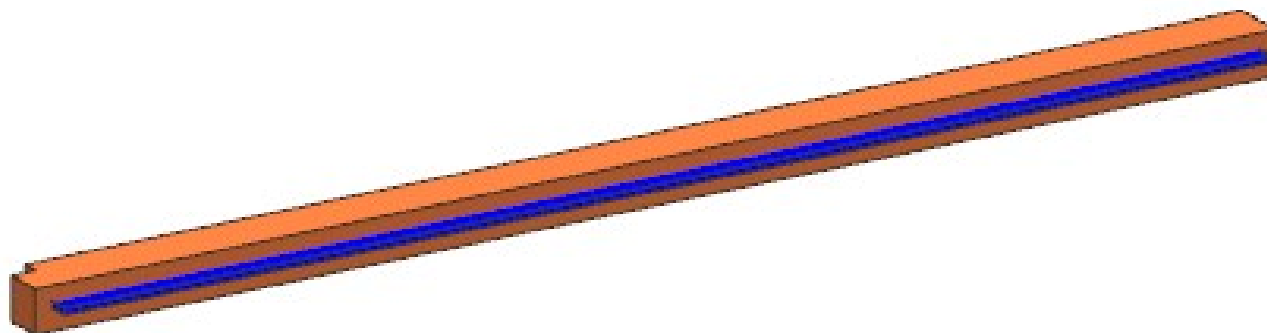
ELEMENTO DA MONTARE con:
L01_SSB01
A01_SSB01
e spedire con un unico imballo

AZ68F

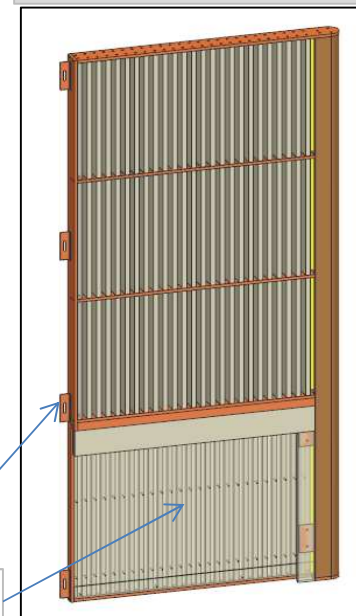
DA MAT. 233 REV. 18-10-2022

LOCALE	CODICE	DESCRIZIONE COMPONENTE	FINITURA	Q.TA	OPERATORE
SALONE A POPPA	AZ66F-L01_SSB01	LANTERNA DIVISORIA PRUA	LACCATO BRONZO	1	Damiano

1 - L.765 x H.29 x sp 35



**ELEMENTO DA
MONTARE con:
R01_SSB01
A01_SSB01
e spedire con un unico
imballo**



A01_SSB01

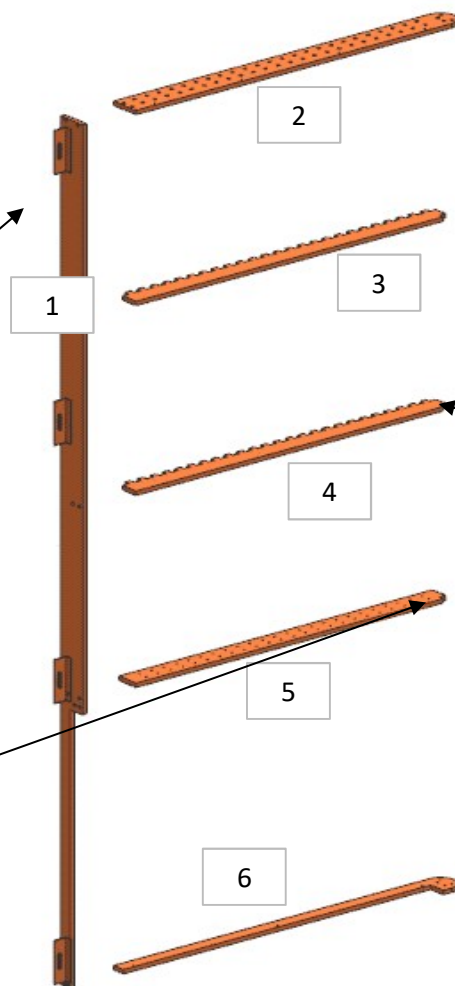
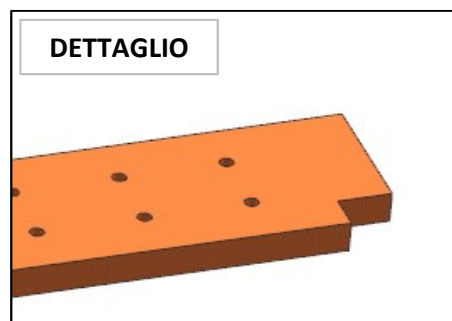
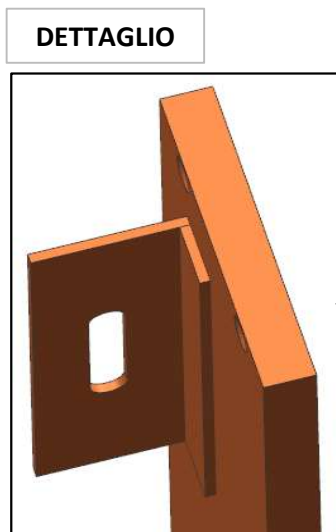
R01_SSB01

consonni&c

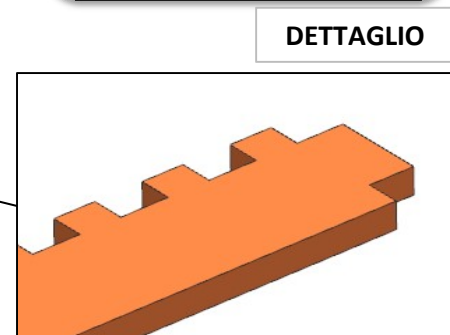
AZ68F

DA MAT. 233 REV. 18-10-2022

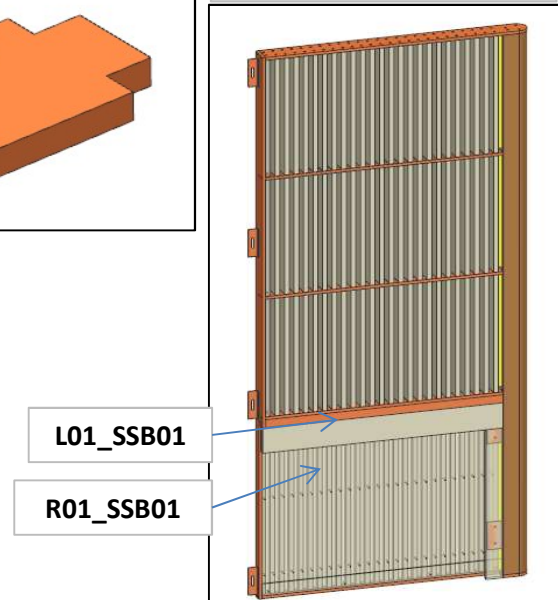
LOCALE	CODICE	DESCRIZIONE COMPONENTE	FINITURA	Q.TA	OPERATORE
SALONE A POPPA	AZ68F-A01_SSB01	LANTERNA DIVISORIA PRUA	ACCIAIO LACCATO BRONZO	6	Damiano



- 1 - L 67 x H 1973 x sp 10
- 2 - L 804 x H 67 x sp 10
- 3 - 4 - L765 x H 51 x sp 10
- 5 - L 51 x H 765 x sp 10
- 6 - L 67 x H 804 x sp 10



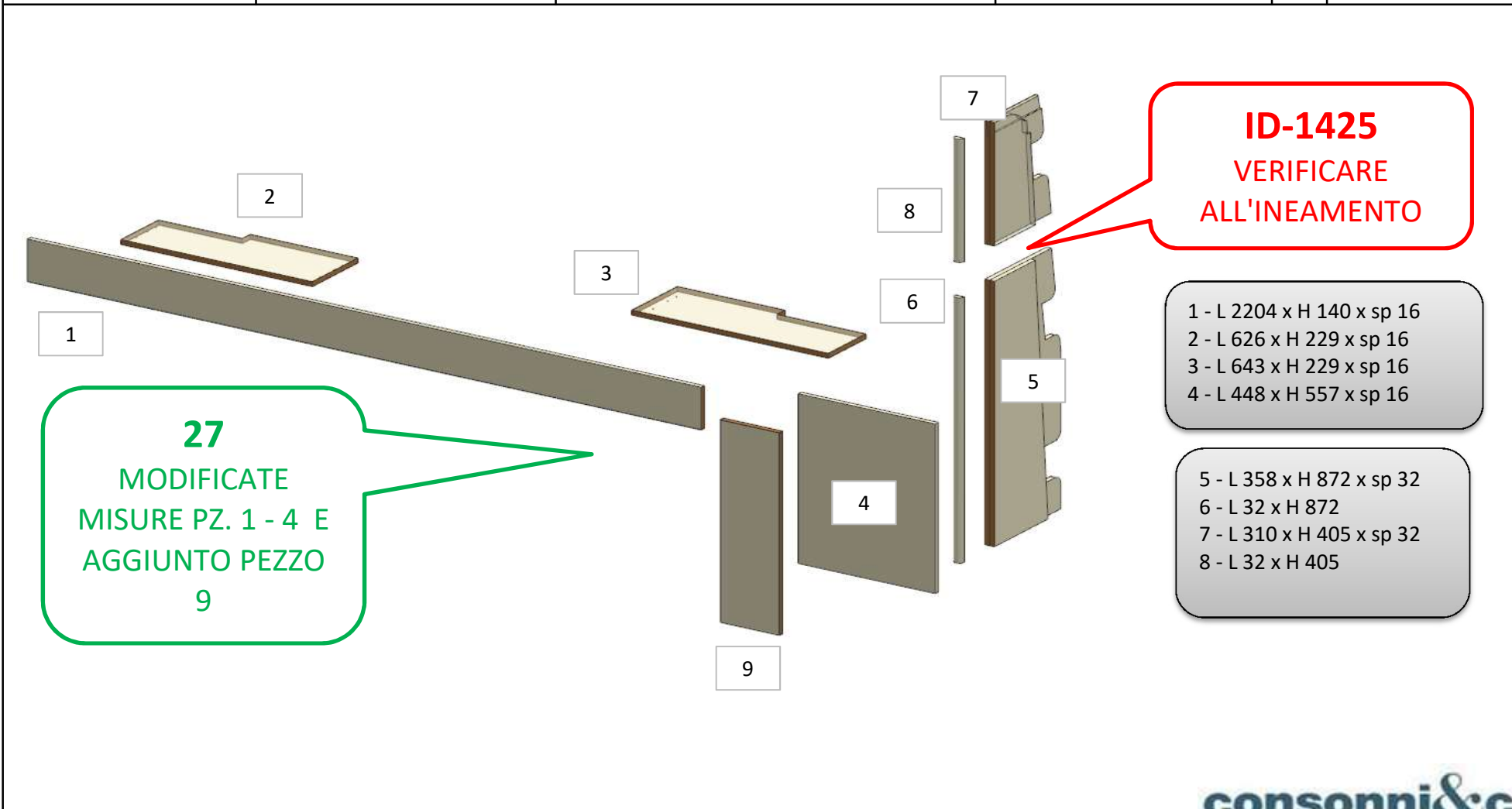
ELEMENTO DA MONTARE con:
L01_SSB01
R01_SSB01
 e spedire con un unico imballo



AZ68F

DA MAT. 265 REV. 29-04-2024

LOCALE	CODICE	DESCRIZIONE COMPONENTE	FINITURA	Q.TA	OPERATORE
SALONE A POPPA	AZ68F-R01_SSC01	MURATA BASSA DX PRUA	LASTRA CHIARA	9	Damiano

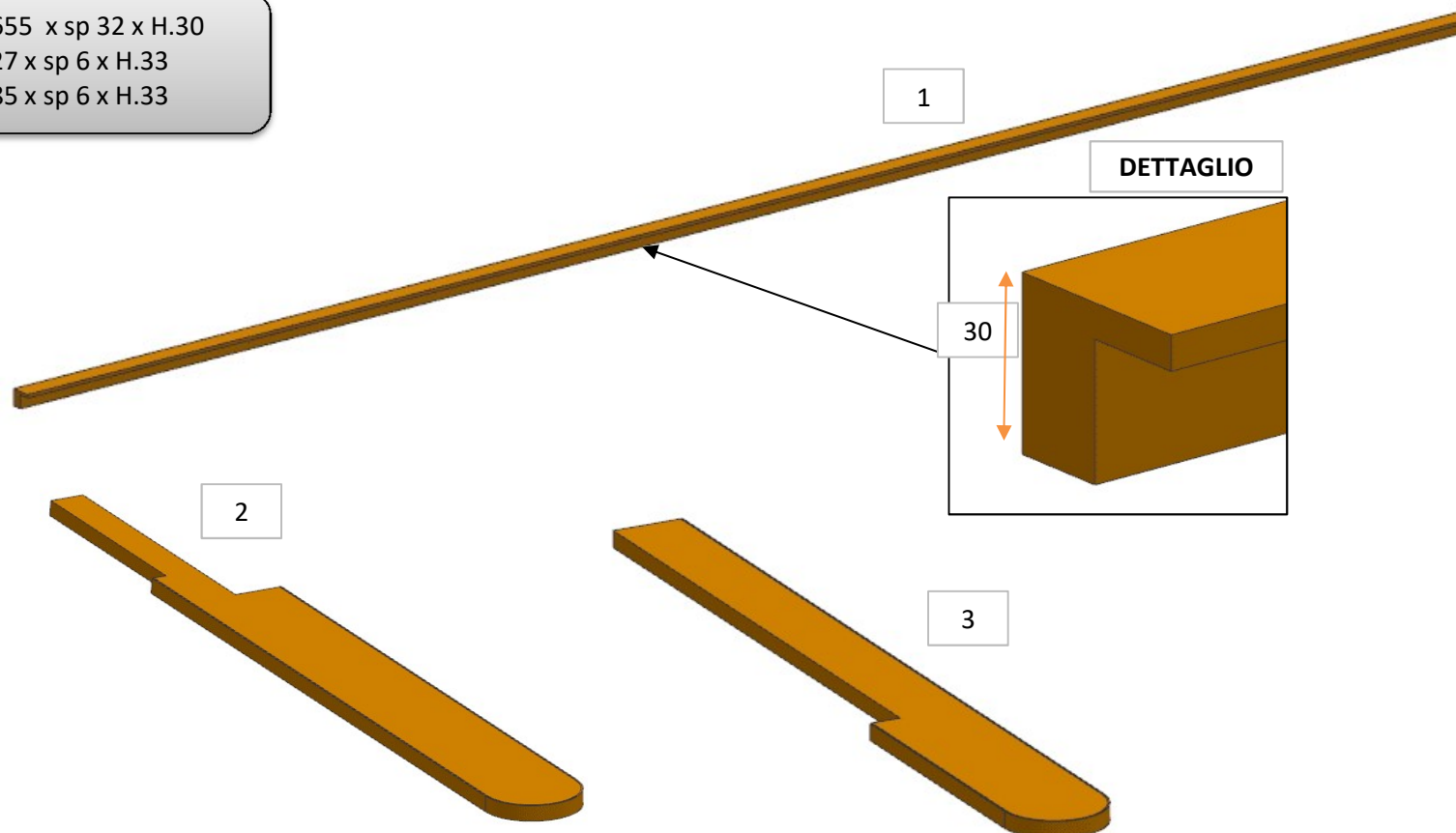


AZ68F

VER.2024 REV. 29-04-2024

LOCALE	CODICE	DESCRIZIONE COMPONENTE	FINITURA	Q.TA	OPERATORE
SALONE A POPPA	AZ68F-R02_SSC01	MURATA BASSA DX PRUA	LASTRA TEAK	3	Damiano

- 1 - L. 2655 x sp 32 x H.30
- 2 - L. 327 x sp 6 x H.33
- 3 - L. 285 x sp 6 x H.33

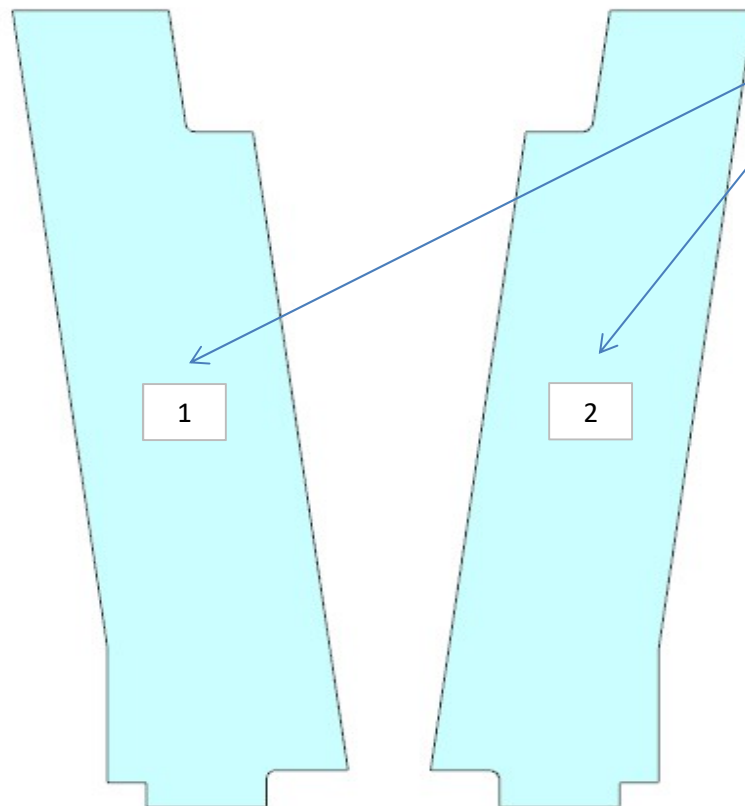


AZ68F

DA MAT. 203 REV. 18-10-2022

LOCALE	CODICE	DESCRIZIONE COMPONENTE	FINITURA	Q.TA	OPERATORE
SALONE A POPPA	AZ66F-L01_SSC01	MURATA BASSA DX PRUA	LACCATO NERO OPACO	2	Damiano

1 - 2 - L 260 x H.952 x sp 10



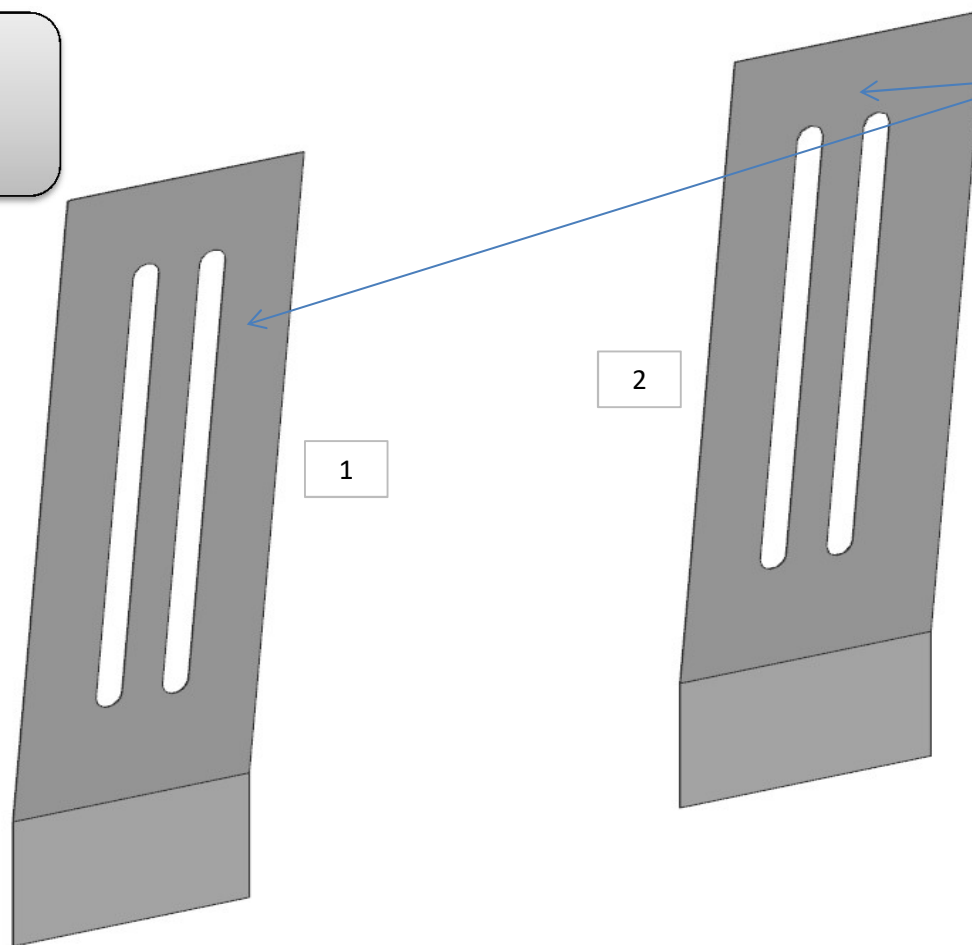
LATO BELLO

AZ68F

DA MAT. 203 REV. 18-10-2022

LOCALE	CODICE	DESCRIZIONE COMPONENTE	FINITURA	Q.TA	OPERATORE
SALONE A POPPA	AZ68F-A01_SSC01	MURATA BASSA DX PRUA	ACCIAIO	2	Damiano

1 - L 271,5 x H 945 x sp 1.5 mm
2 - L 271,5 x H 945 x sp 1.5 mm

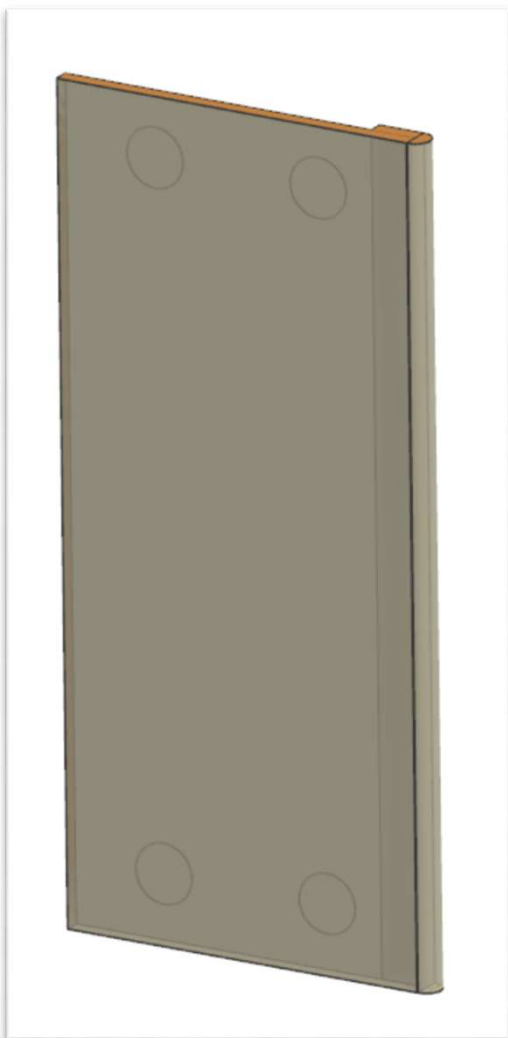


LATO BELLO

AZ68F

DA MAT.212 REV. 13-09-2021

LOCALE	CODICE	DESCRIZIONE COMPONENTE	FINITURA	Q.TA	OPERATORE
SALONE A POPPA	AZ68F-MG_SSF01	COLONNA PLENUM DX PRUA			Damiano

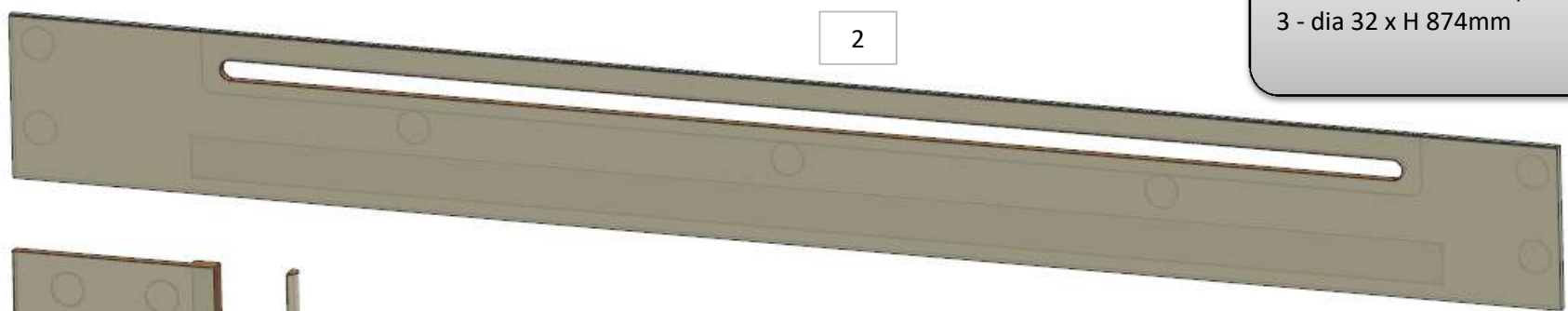


AZ68F

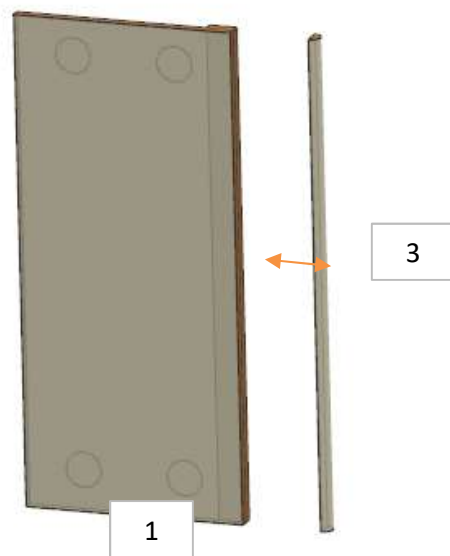
DA MAT.212 REV. 29-04-2024

LOCALE	CODICE	DESCRIZIONE COMPONENTE	FINITURA	Q.TA	OPERATORE
SALONE A POPPA	AZ68F-R01_SSF01	COLONNA PLENUM DX PRUA	LASTRA CHIARA	3	Damiano

- 1 - L 391 x H 874 x sp 32mm
- 2 - L.3006 x H.310 x sp 16mm
- 3 - dia 32 x H 874mm



2



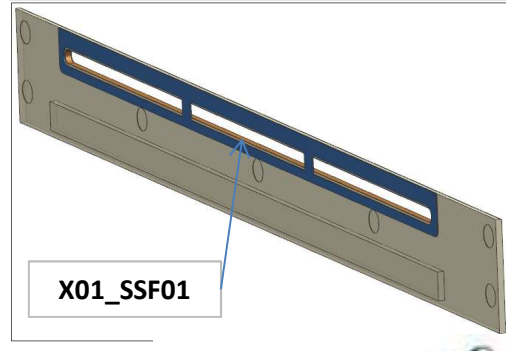
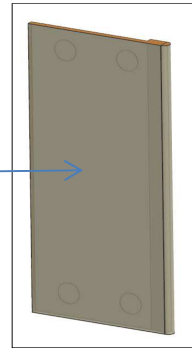
1

3

ELEMENTI N.1 e 3 DA MONTARE e spedire con un unico imballo

ELEMENTO N.1 DA MONTARE: X01-SSF01 e spedire con un unico imballo

MG_SSF01



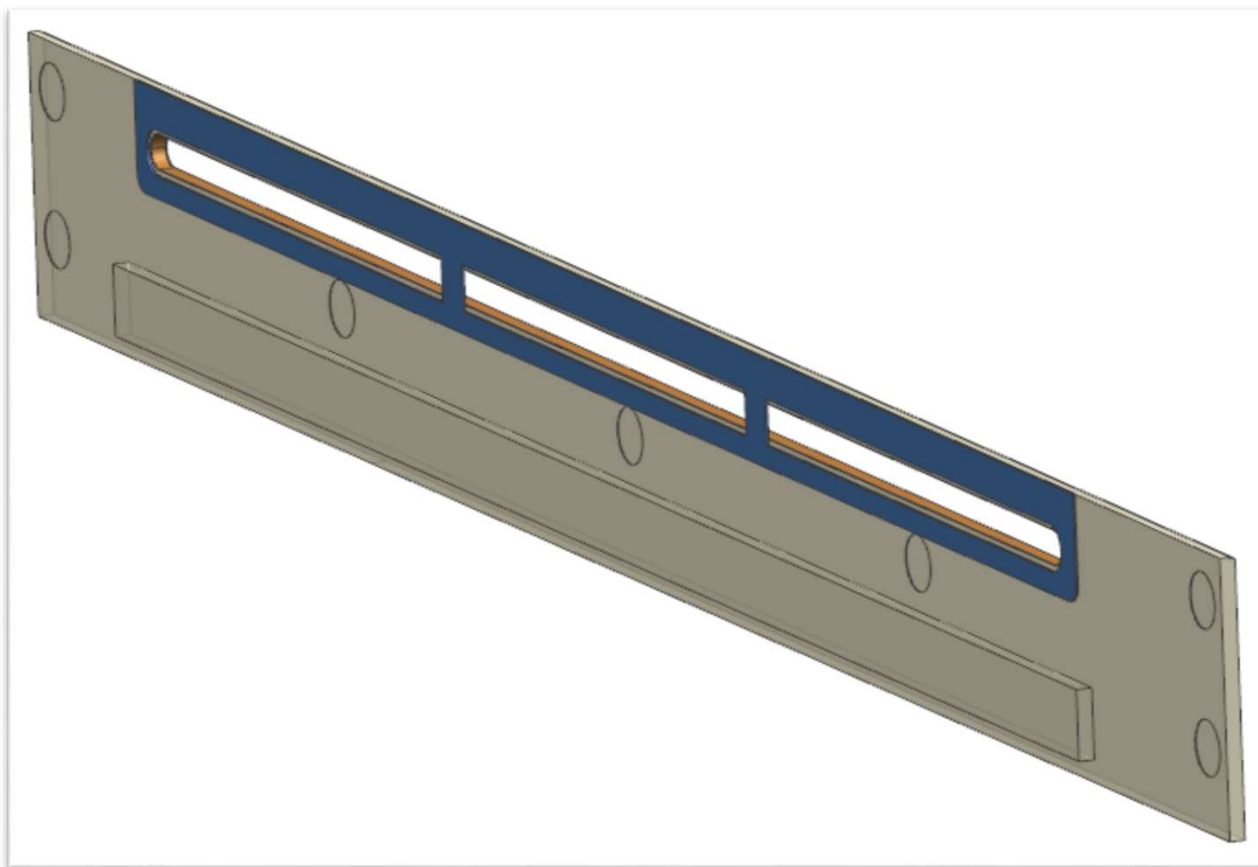
X01_SSF01

AZ68F

DA MAT.212

REV. 18-10-2022

LOCALE	CODICE	DESCRIZIONE COMPONENTE	FINITURA	Q.TA	OPERATORE
SALONE A POPPA	AZ68F-MF_SSF01	COLONNA PLENUM DX PRUA			Damiano



AZ68F

REV. 29-04-2024

LOCALE	CODICE	DESCRIZIONE COMPONENTE	FINITURA	Q.TA	OPERATORE
SALONE A POPPA	AZ68F-X01_SSF01	COLONNA PLENUM DX PRUA	LAMINATO NERO	1	Damiano

1 - L 2367 x H.120 x sp 3

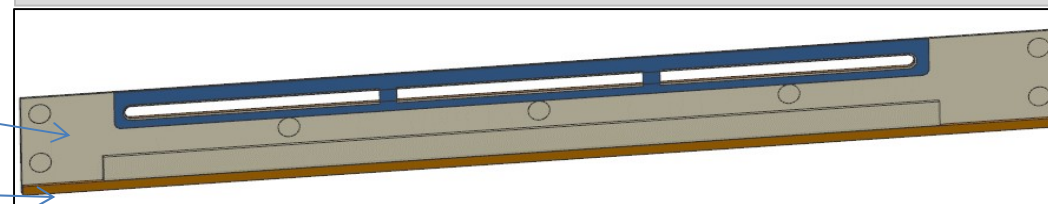


ID 1419
ANNERIRE FILI A VISTA

ELEMENTO DA MONTARE:
R02-SSF01
R01-SSF01
e spedire con un unico imballo

R01_SSF01

R02_SSF01

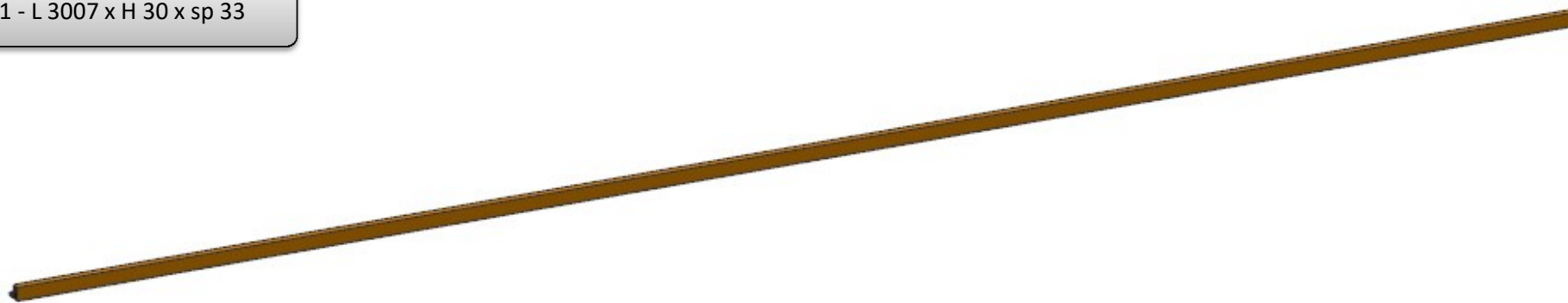


AZ68F

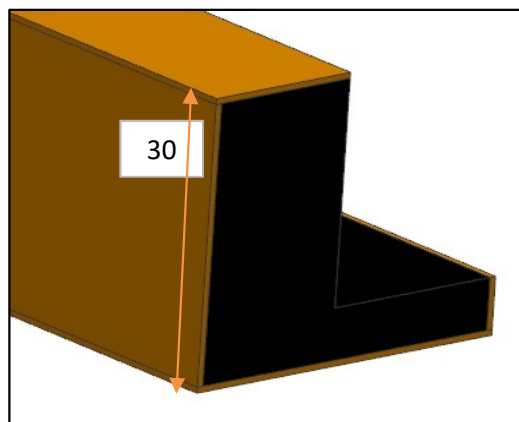
VER.2024 REV. 29-04-2024

LOCALE	CODICE	DESCRIZIONE COMPONENTE	FINITURA	Q.TA	OPERATORE
SALONE A POPPA	AZ68F-R02_SSF01	COLONNA PLENUM DX PRUA	LASTRA TEAK	1	Damiano

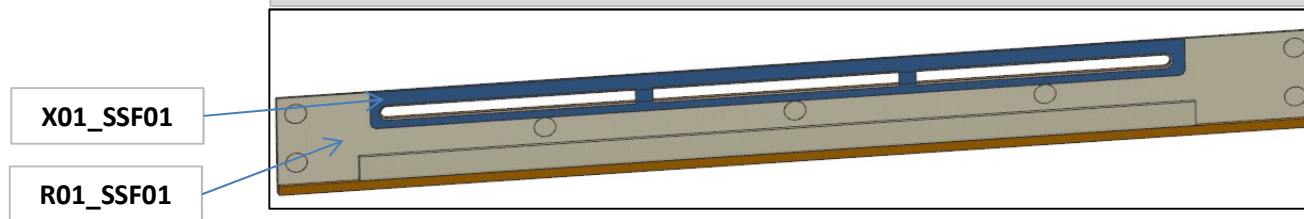
1 - L 3007 x H 30 x sp 33



DETTAGLIO



ELEMENTO DA MONTARE:
R01-SSF01
X01-SSF01
e spedire con un unico imballo

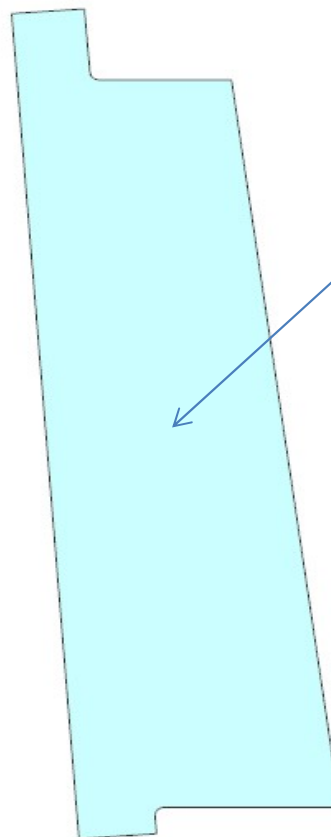


AZ68F

REV. 18-10-2022

LOCALE	CODICE	DESCRIZIONE COMPONENTE	FINITURA	Q.TA	OPERATORE
SALONE A POPPA	AZ66F-L01_SSF01	COLONNA PLENUM DX PRUA	LACCATO NERO OPACO	1	Damiano

1 - L.282 x H 990 x sp 10



LATO BELLO

AZ68F

REV. 29-04-2024

LOCALE	CODICE	DESCRIZIONE COMPONENTE	FINITURA	Q.TA	OPERATORE
SALONE A POPPA	AZ68F-R01_SSG01	STRUTTURA MURATA BASSA DX	LASTRA CHIARA	1	Damiano

1 - L..84 x H.2429 x sp 15

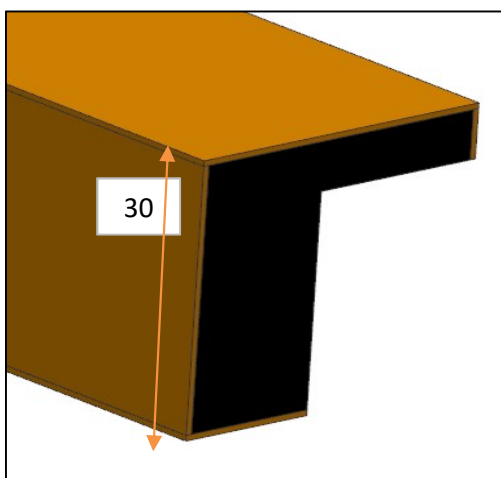
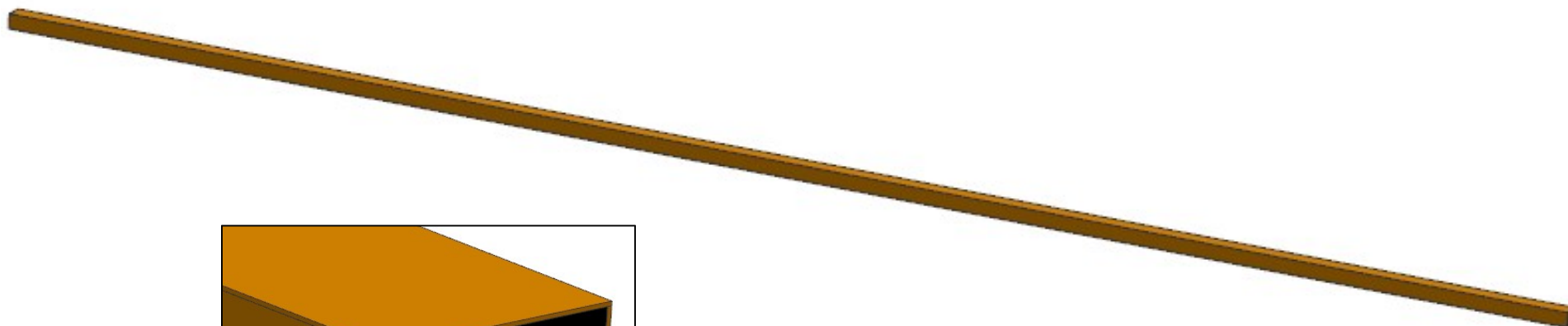
34 (step1)
MODIFICATA
SAGOMA GRADINO

AZ68F

VER.2024 REV. 29-04-2024

LOCALE	CODICE	DESCRIZIONE COMPONENTE	FINITURA	Q.TA	OPERATORE
SALONE A POPPA	AZ68F-R02_SSG01	STRUTTURA MURATA BASSA DX	LASTRA TEAK	1	Damiano

1 - L 3007 x 33 x H 30

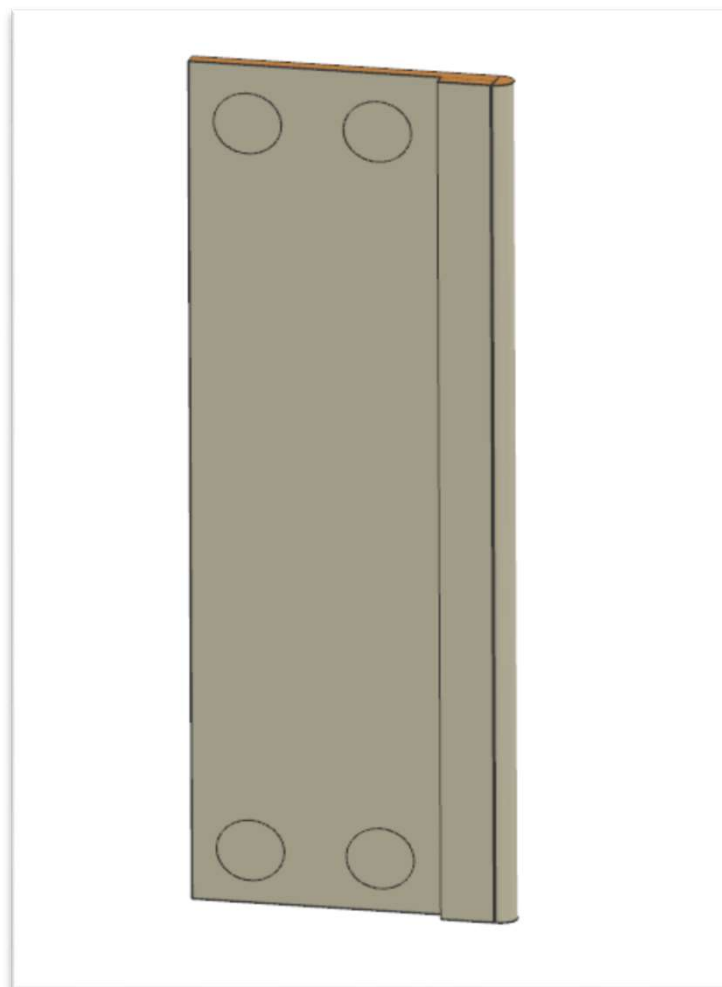


DETTAGLIO

AZ68F

DA MAT.212 REV. 13-09-2021

LOCALE	CODICE	DESCRIZIONE COMPONENTE	FINITURA	Q.TA	OPERATORE
SALONE A POPPA	AZ68F-MG_SSH01	COLONNA POPPA MURATA DX			Damiano

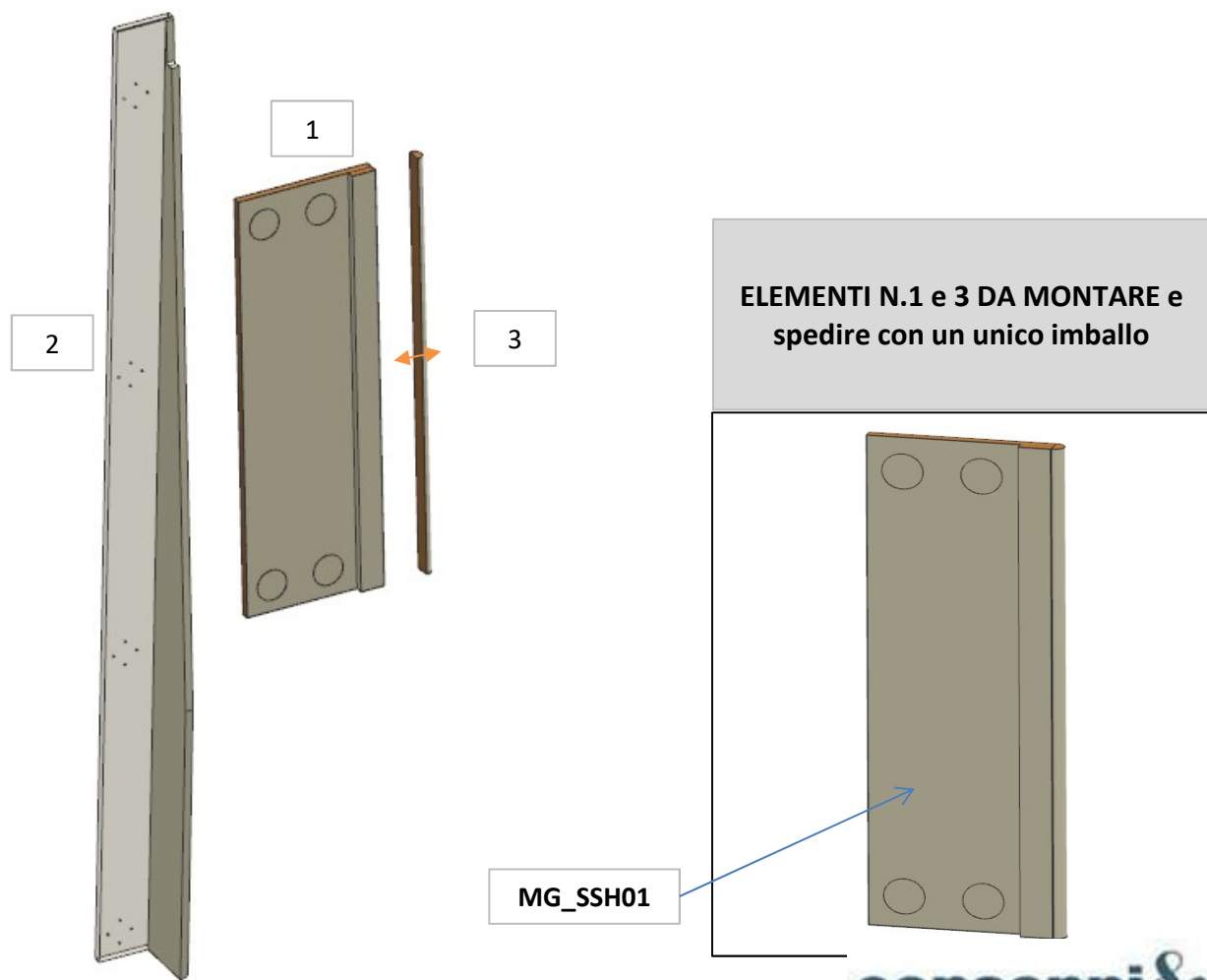


AZ68F

DA MAT.212 REV. 29-04-2024

LOCALE	CODICE	DESCRIZIONE COMPONENTE	FINITURA	Q.TA	OPERATORE
SALONE A POPPA	AZ68F-R01_SSH01	COLONNA POPPA MURATA DX	LASTRA CHIARA	3	Damiano

- 1 - L 285 x H 874 x sp 32mm
- 2 - L 120 x H 2025x 141mm
- 3 - dia. 32mm x H 874mm

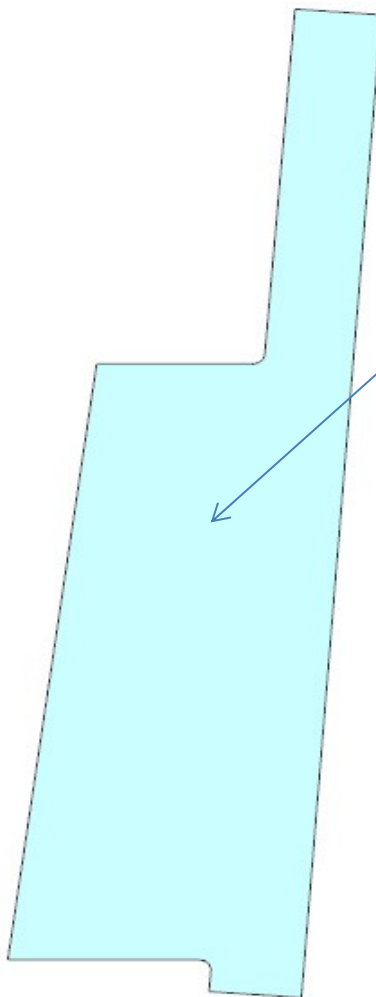


AZ68F

REV. 18-10-2022

LOCALE	CODICE	DESCRIZIONE COMPONENTE	FINITURA	Q.TA	OPERATORE
SALONE A POPPA	AZ66F-L01_SSH01	COLONNA POPPA MURATA DX	LACCATO NERO OPACO	1	Damiano

1 - L. 266 x H.990 x sp 10

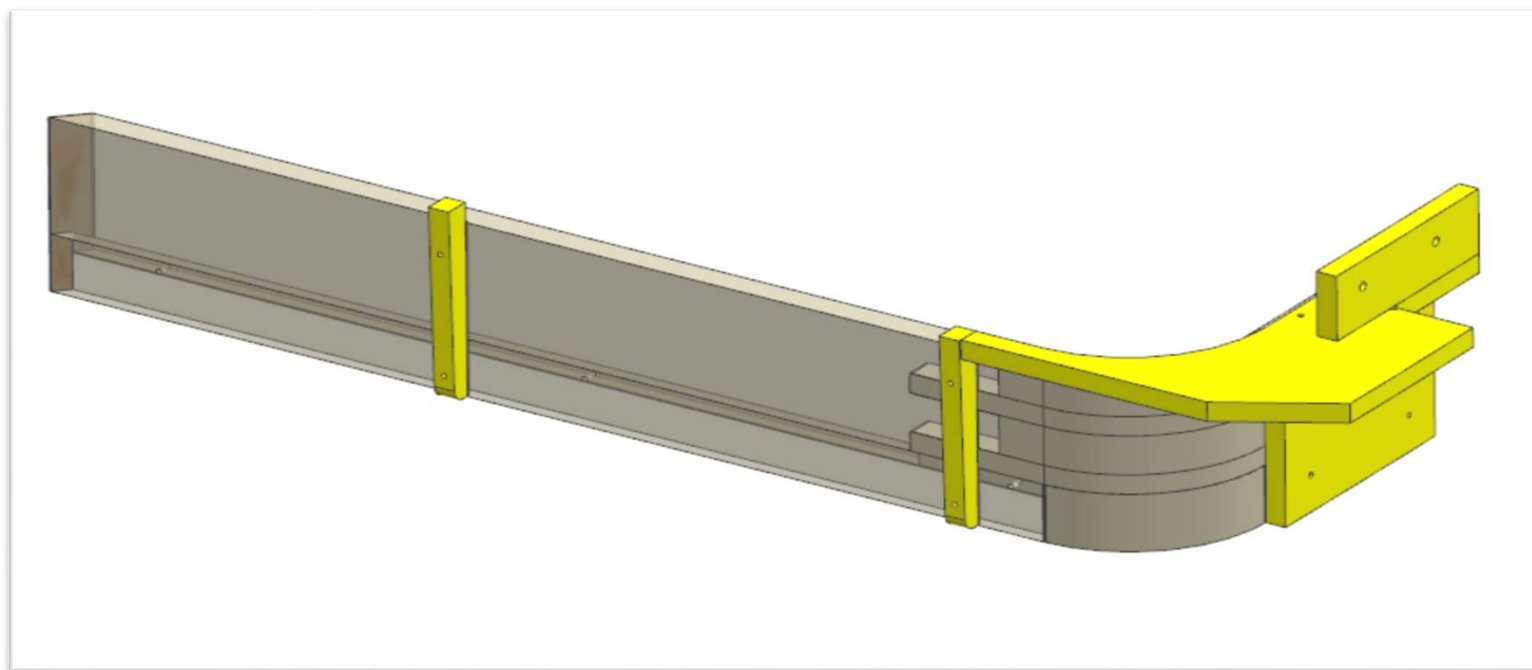


LATO BELLO

AZ68F

DA MAT. 212 REV. 18-10-2022

LOCALE	CODICE	DESCRIZIONE COMPONENTE	FINITURA	Q.TA	OPERATORE
SALONE A POPPA	AZ68F-MF_SSI01	GRADINO ALTO			Damiano



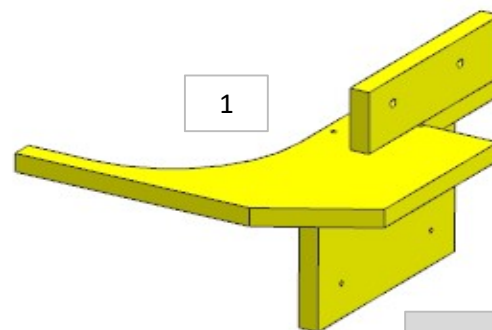
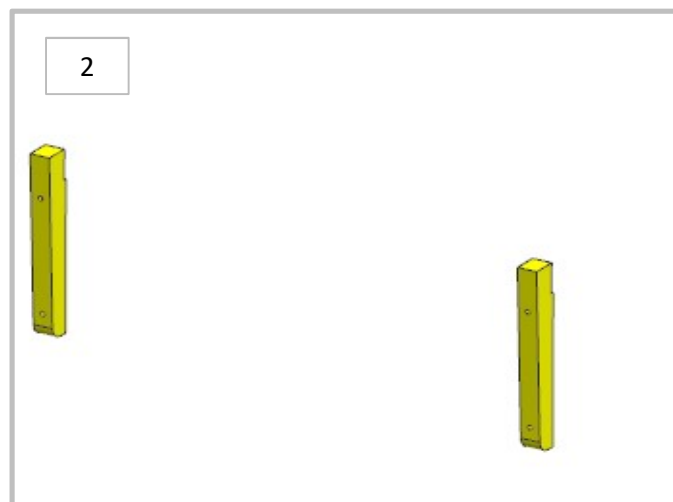
FERRAMENTA:

N° 2 - VITI 6MA

AZ68F

DA MAT. 212 REV. 29-04-2024

LOCALE	CODICE	DESCRIZIONE COMPONENTE	FINITURA	Q.TA	OPERATORE
SALONE A POPPA	AZ68F-SSI01	GRADINO ALTO	OKOUME' GREZZO	2	Damiano



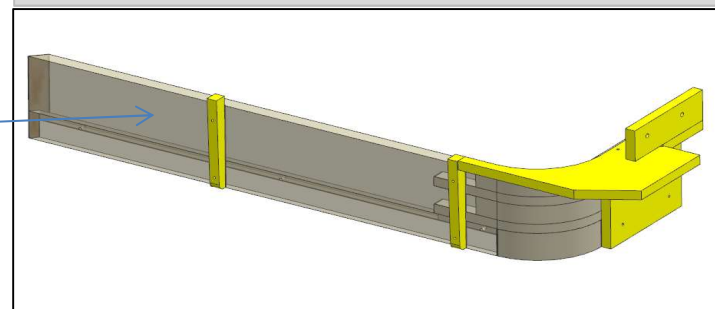
2 - N° 2 PZ. = L.21 x H 150 x sp 15mm

FERRAMENTA:

N° 2 - VITI 6MA

**ELEMENTO DA MONTARE:
R01-SSI01
e spedire con un unico imballo**

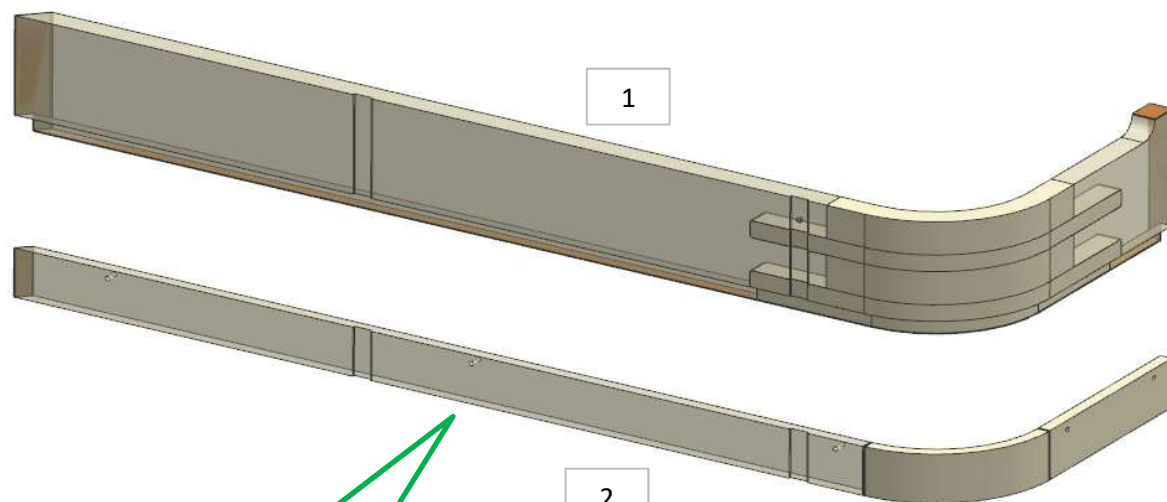
R01_SSI01



AZ68F

DA MAT.212 REV. 29-04-2024

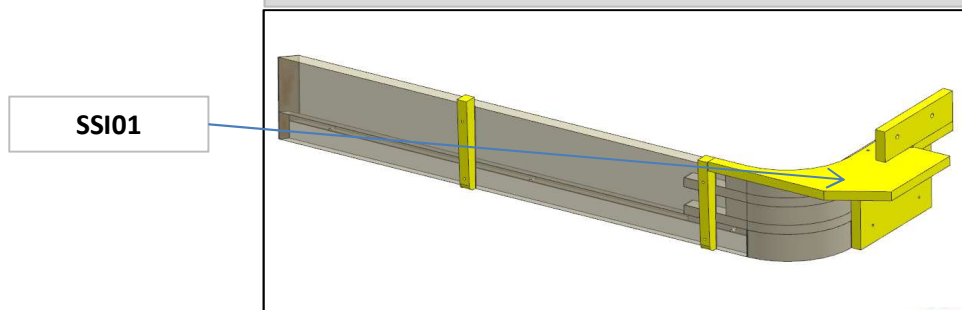
LOCALE	CODICE	DESCRIZIONE COMPONENTE	FINITURA	Q.TA	OPERATORE
SALONE A POPPA	AZ68F-R01_SSI01	GRADINO ALTO	LASTRA CHIARA	2	Damiano



34 (step1)
MODIFICATA
SAGOMA GRADINO

- 1 - L 1020 x H121 x sp 20mm
- 2 - L.1020 x H.44 x sp 10mm

ELEMENTO DA MONTARE:
SSI01
e spedire con un unico imballo

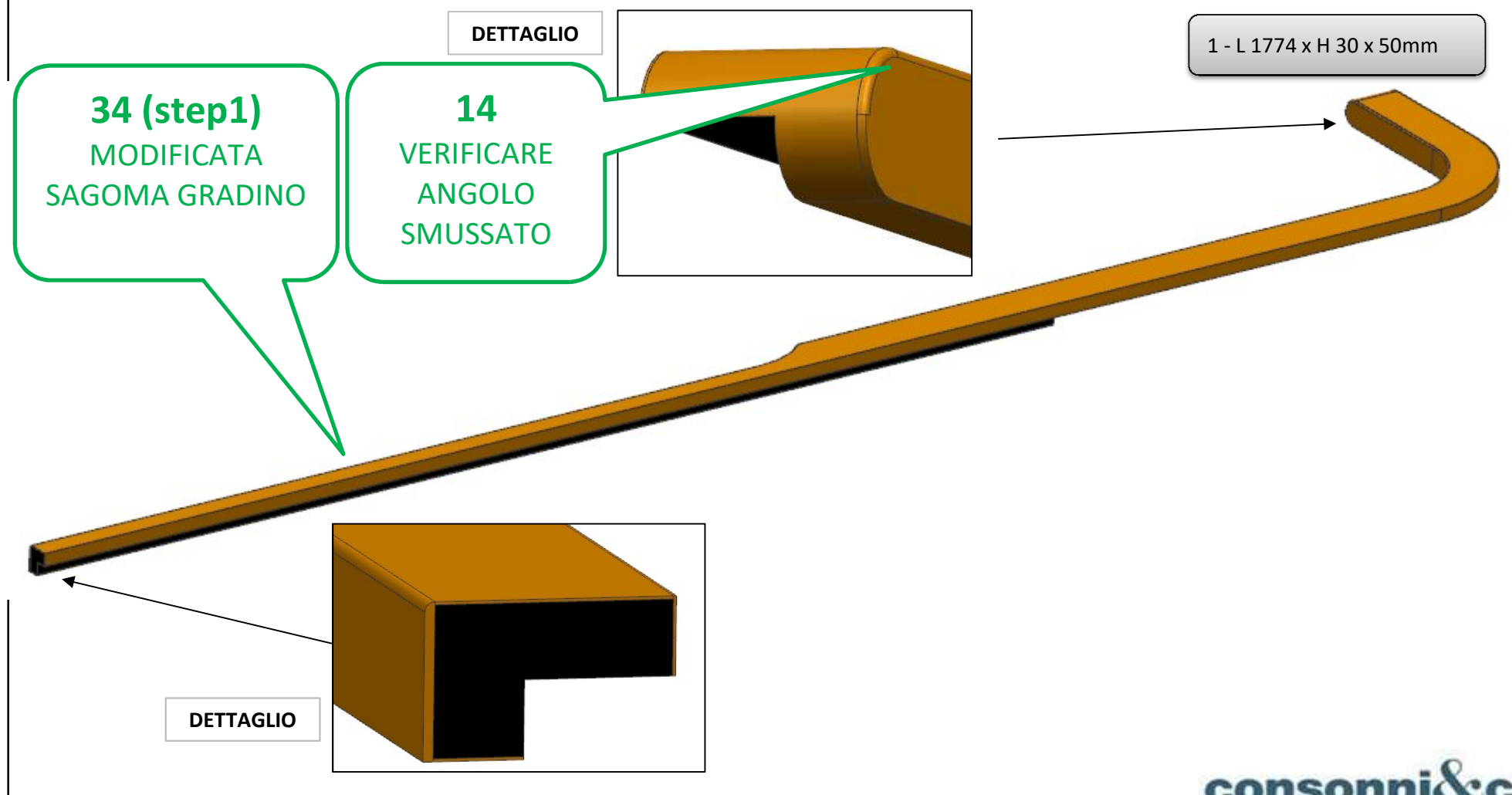


consonni&c

AZ68F

DA MAT. 212 REV. 29-04-2024

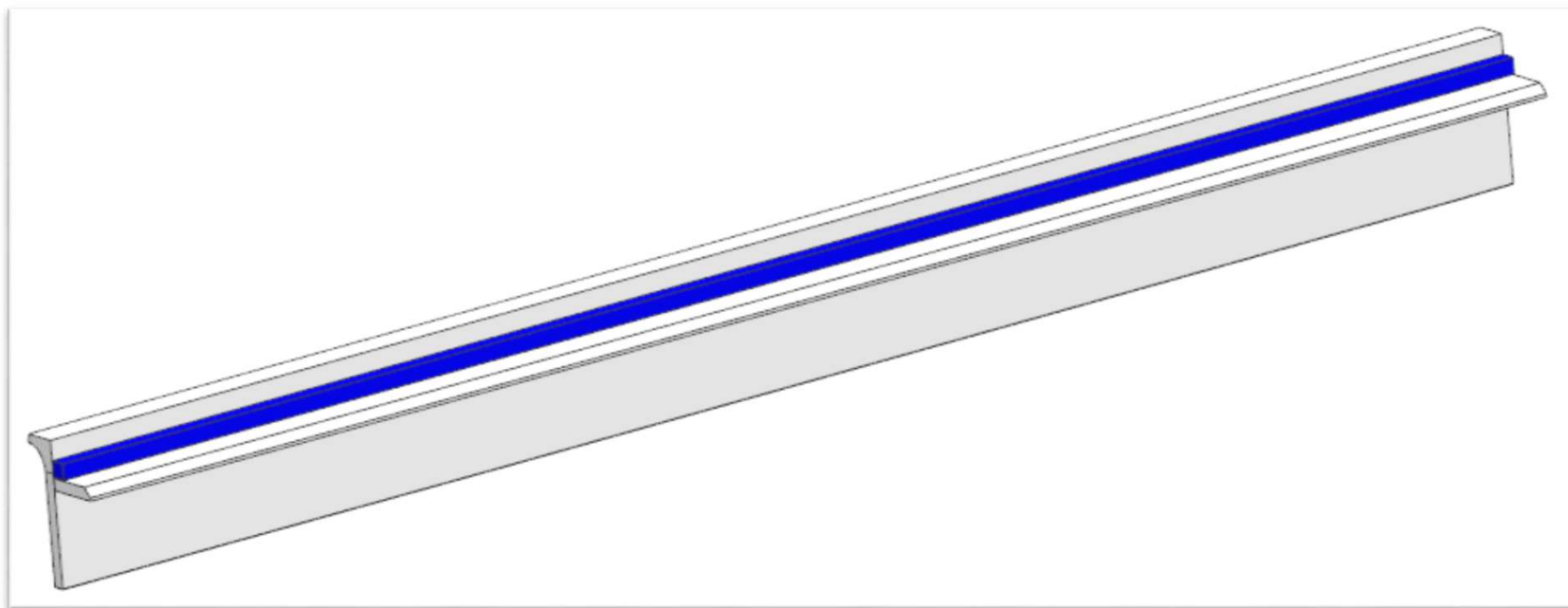
LOCALE	CODICE	DESCRIZIONE COMPONENTE	FINITURA	Q.TA	OPERATORE
SALONE A POPPA	AZ68F-R02_SSI01	GRADINO ALTO	LASTRA TEAK	1	Damiano



AZ68F

REV. 13-09-2021

LOCALE	CODICE	DESCRIZIONE COMPONENTE	FINITURA	Q.TA	OPERATORE
SALONE A POPPA	AZ68F-MG_SSL01	MANTOVANA DX PRUA			Damiano

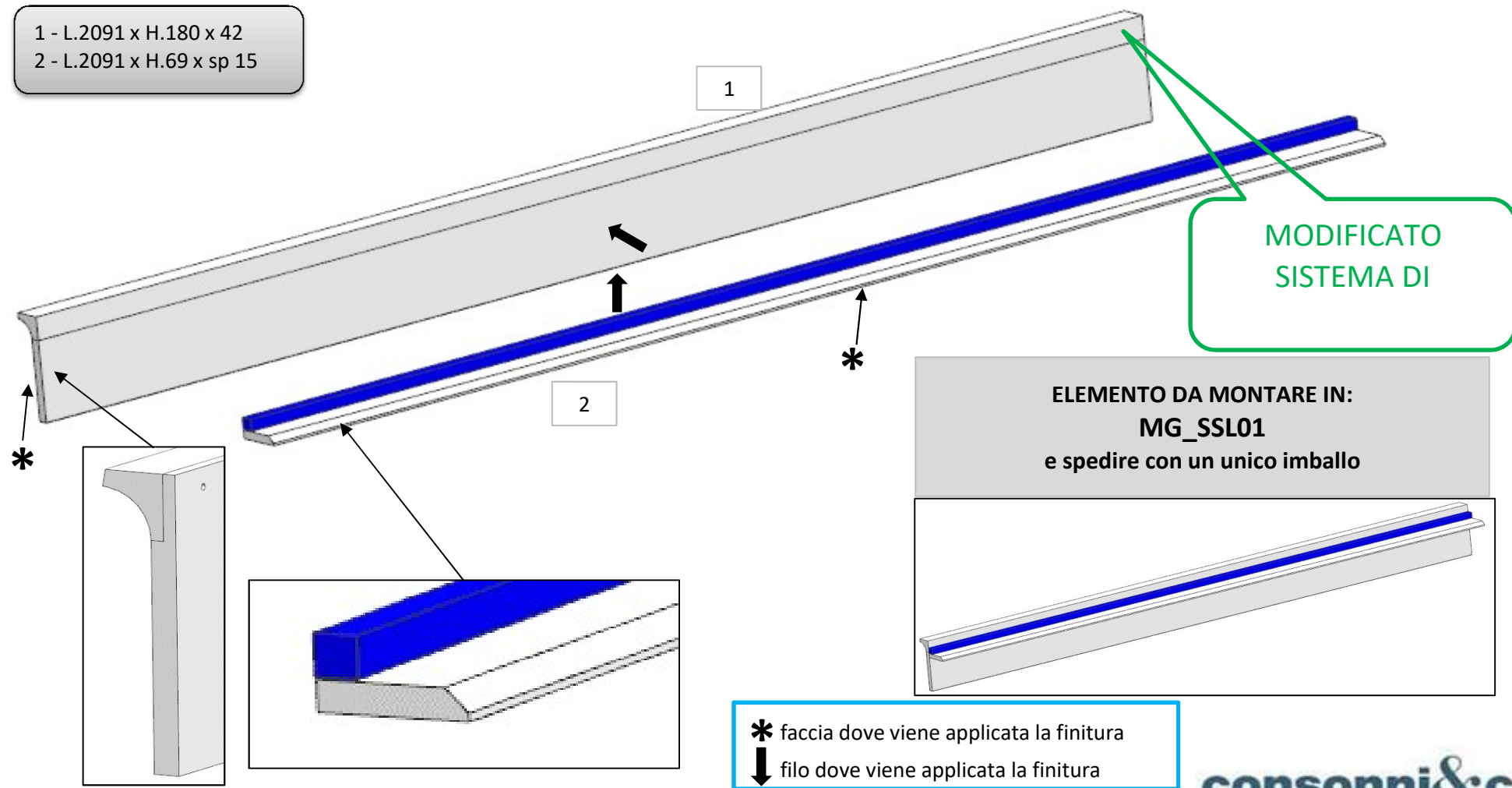


AZ68F

DA MAT. 211 REV. 18-10-2022

LOCALE	CODICE	DESCRIZIONE COMPONENTE	FINITURA	Q.TA	OPERATORE
SALONE A POPPA	AZ66F-L01_SSL01	MANTOVANA DX PRUA	LACCATO BIANCO ARTICO	2	Damiano

1 - L.2091 x H.180 x 42
2 - L.2091 x H.69 x sp 15

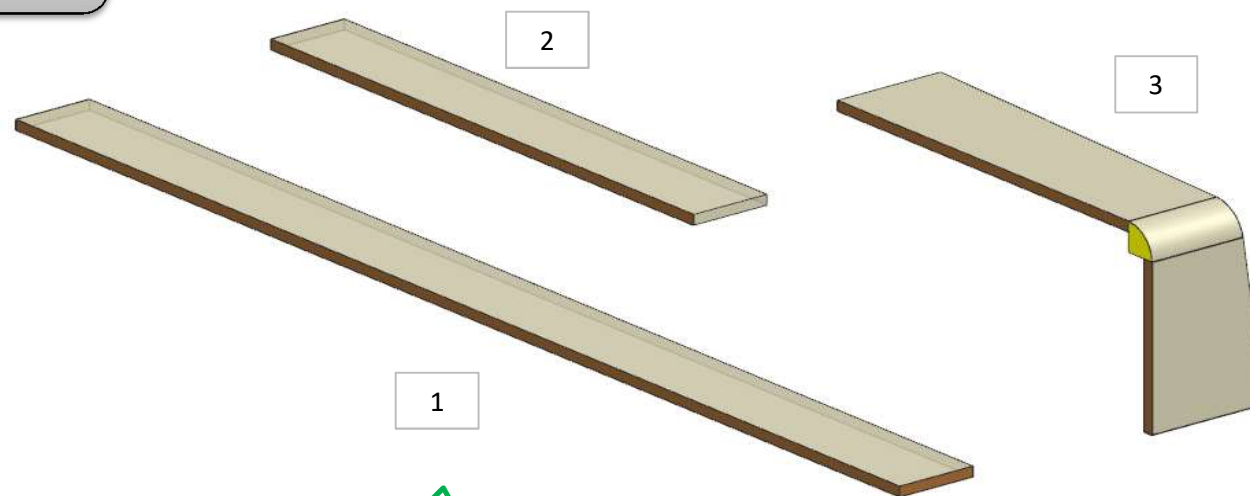


AZ68F

DA MAT. 265 REV. 29-04-2024

LOCALE	CODICE	DESCRIZIONE COMPONENTE	FINITURA	Q.TA	OPERATORE
SALONE A POPPA	AZ68F-R01_SSM01	MURATA BASSA SX PRUA	LASTRA CHIARA	3	Damiano

- 1 - L.1731 x H 117,5 x sp 16
- 2 - L. 828 x H 117,5 x sp 16
- 3 - SVILUPPO L.900 x H 164 x sp 16

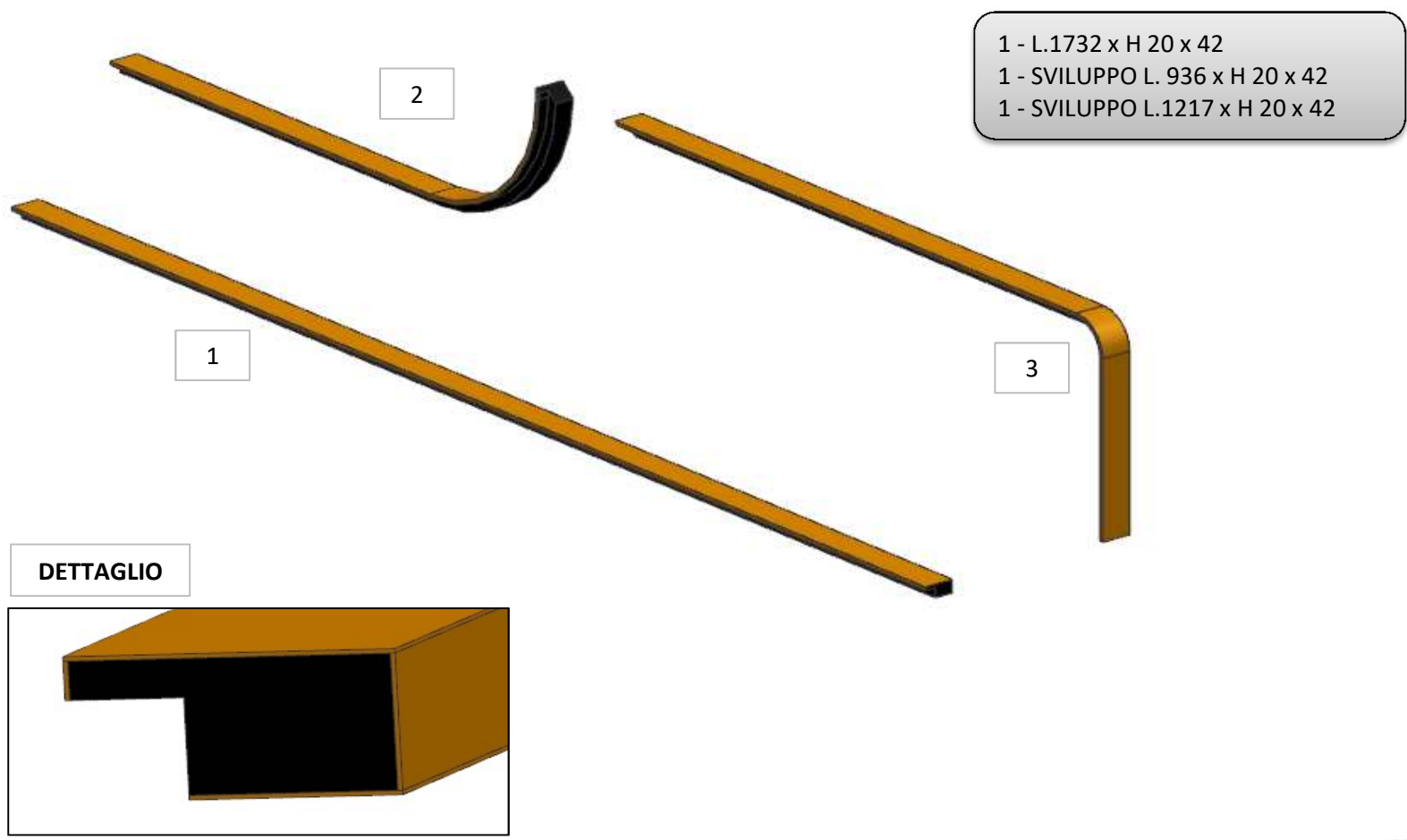


ALLARGATOI FASCE-
CONTROLLARE
MISURE

AZ68F

DA MAT. 265 REV. 29-04-2024

LOCALE	CODICE	DESCRIZIONE COMPONENTE	FINITURA	Q.TA	OPERATORE
SALONE A POPPA	AZ68F-R02_SSM01	MURATA BASSA SX PRUA	LASTRA TEAK	3	Damiano

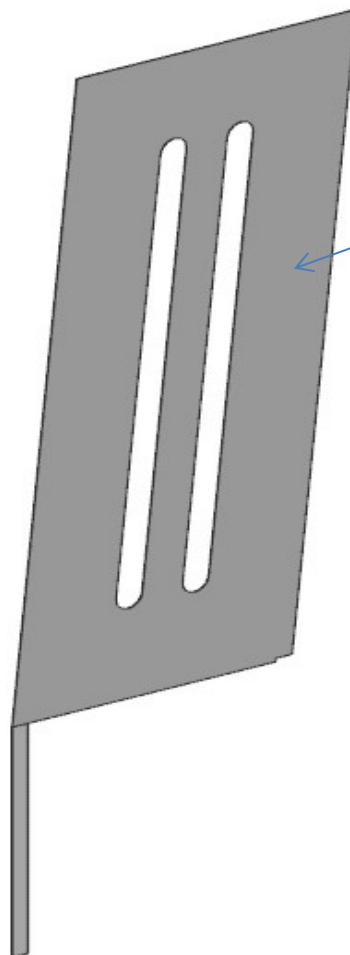


AZ68F

DA MAT. 203 REV. 18-10-2022

LOCALE	CODICE	DESCRIZIONE COMPONENTE	FINITURA	Q.TA	OPERATORE
SALONE A POPPA	AZ68F-A01_SSM01	MURATA BASSA SX PRUA	ACCIAIO	1	Damiano

1 - L 1012 x H.320 x sp 1,5



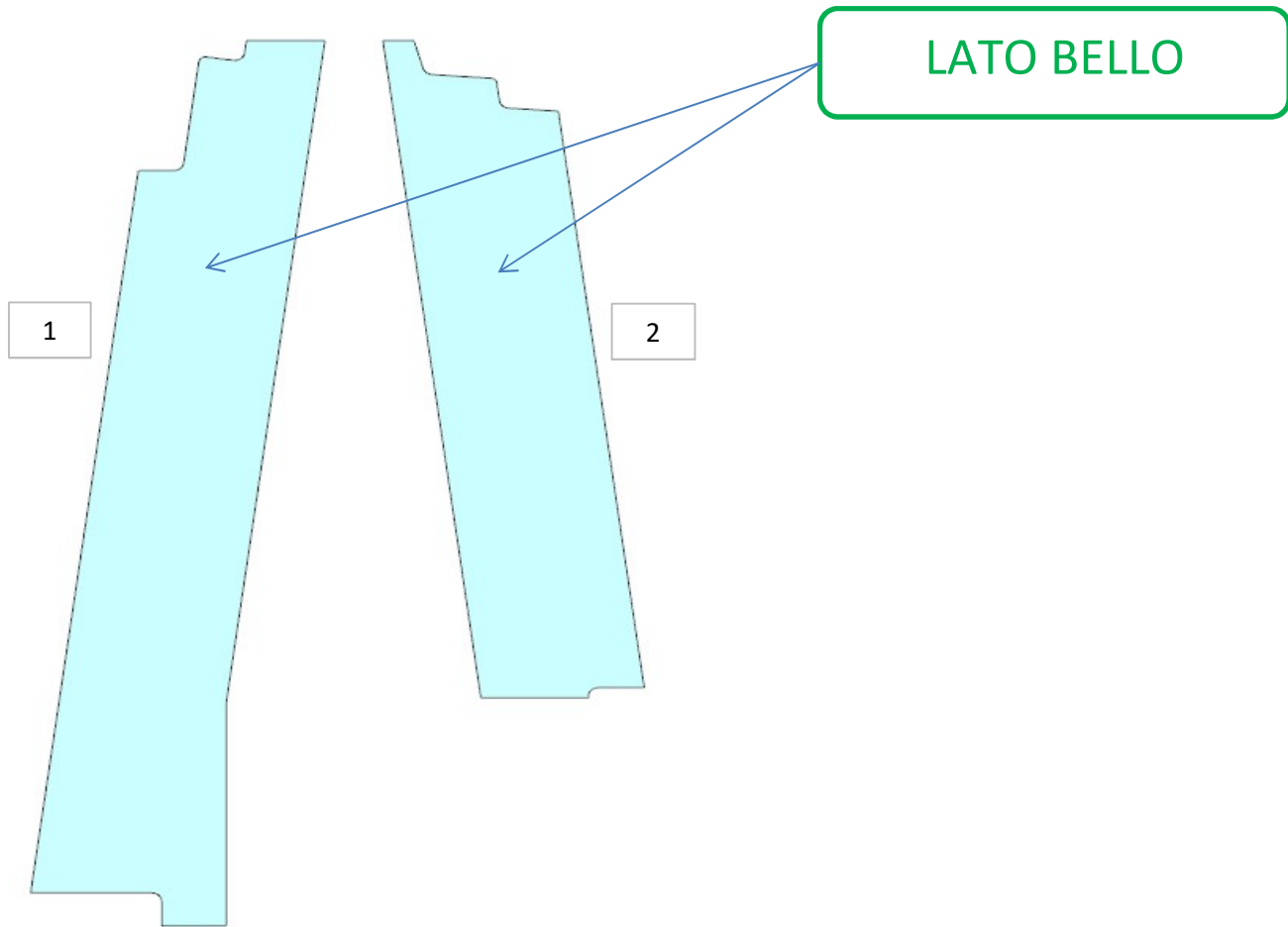
LATO BELLO

AZ68F

DA MAT. 203 REV. 18-10-2022

LOCALE	CODICE	DESCRIZIONE COMPONENTE	FINITURA	Q.TA	OPERATORE
SALONE A POPPA	AZ66F-L01_SSM01	MURATA BASSA SX PRUA	LACCATO NERO OPACO	2	Damiano

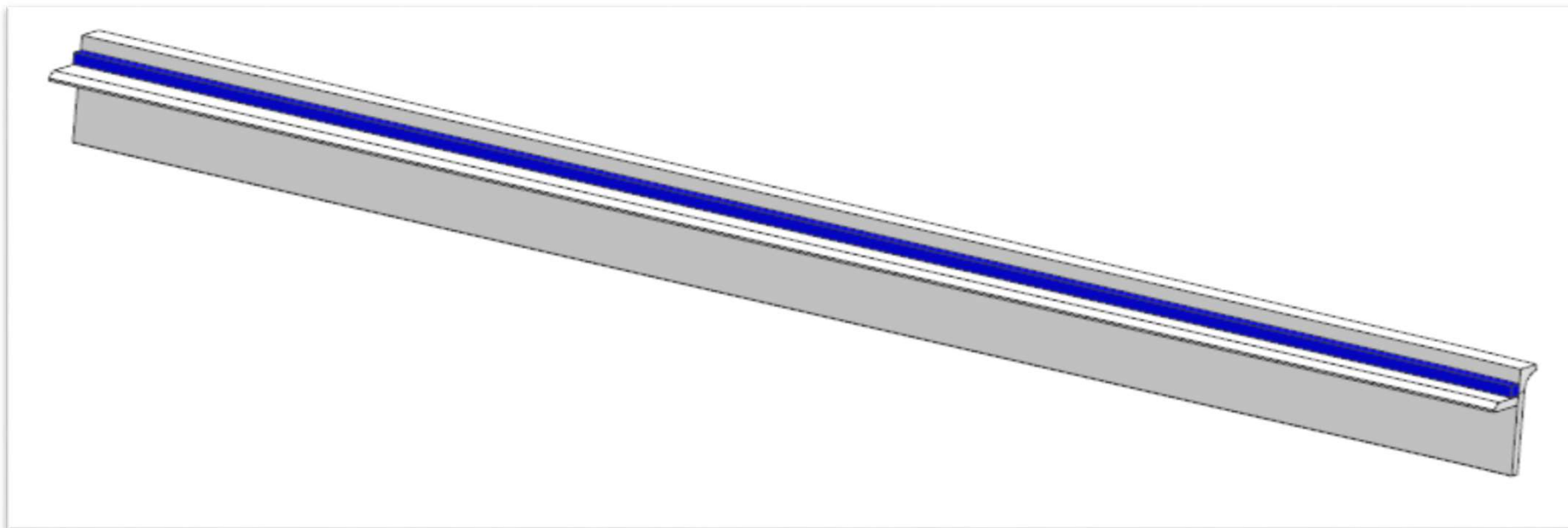
1 - L.200 x H.1019 x sp 10mm
2 - L.167 x H.753 x sp 10mm



AZ68F

REV. 13-09-2021

LOCALE	CODICE	DESCRIZIONE COMPONENTE	FINITURA	Q.TA	OPERATORE
SALONE A POPPA	AZ68F-MG_SSN01	MANTOVANA SX PRUA			Damiano



AZ68F

DA MAT. 211 REV. 18-10-2022

LOCALE	CODICE	DESCRIZIONE COMPONENTE	FINITURA	Q.TA	OPERATORE
SALONE A POPPA	AZ66F-L01_SSN01	MANTOVANA SX PRUA	LACCATO BIANCO ARTICO	2	Damiano

* faccia dove viene applicata la finitura
 ↓ filo dove viene applicata la finitura

1 - L.2538 x H 180 x sp 15
 2 - L.2537 x H 80 x sp 15

1

2

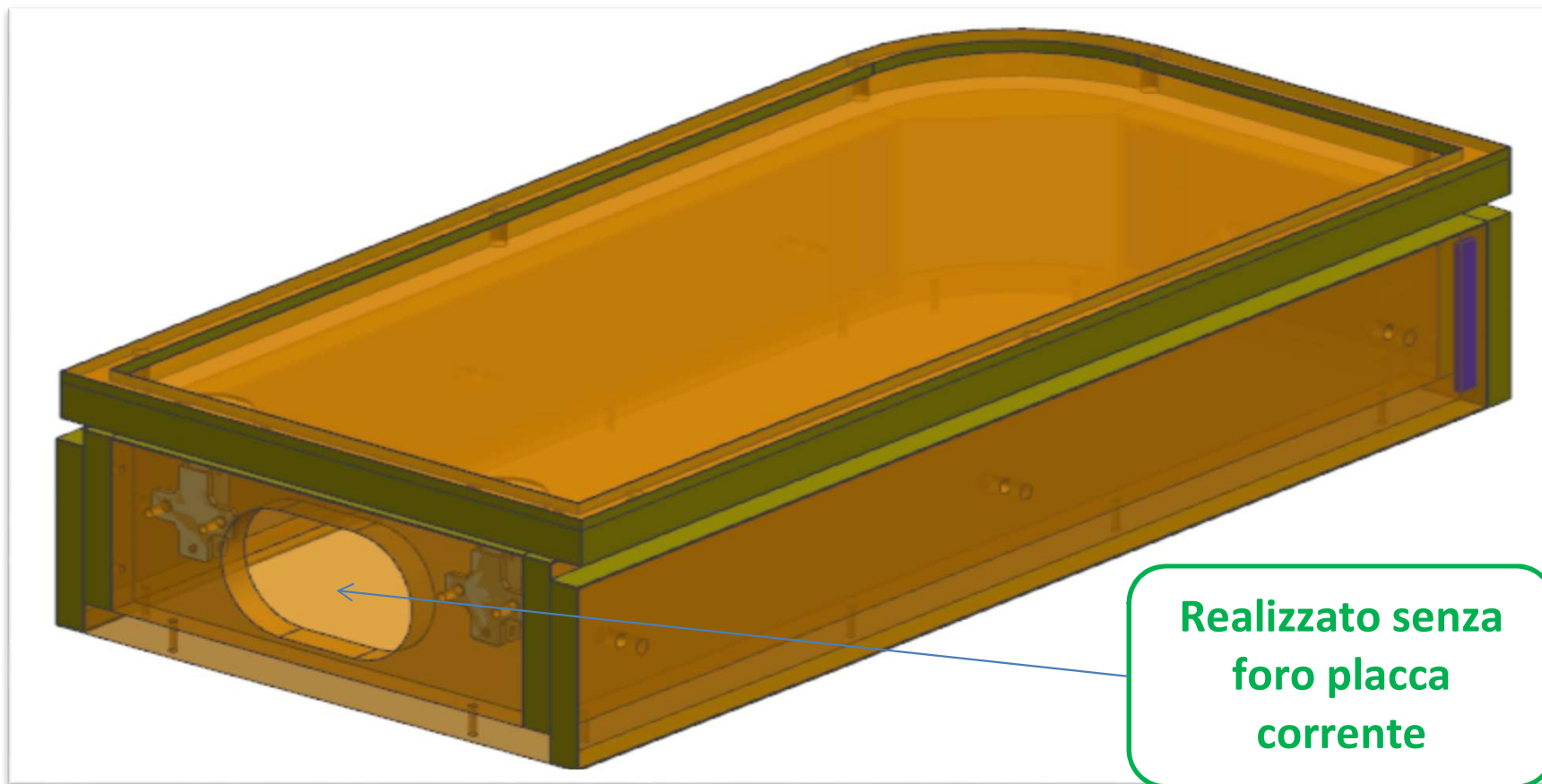
MODIFICATO SISTEMA DI

ELEMENTO DA MONTARE IN:
 MG_SSN01
 e spedire con un unico imballo

AZ68F

DA MAT. 203 REV. 13-09-2021

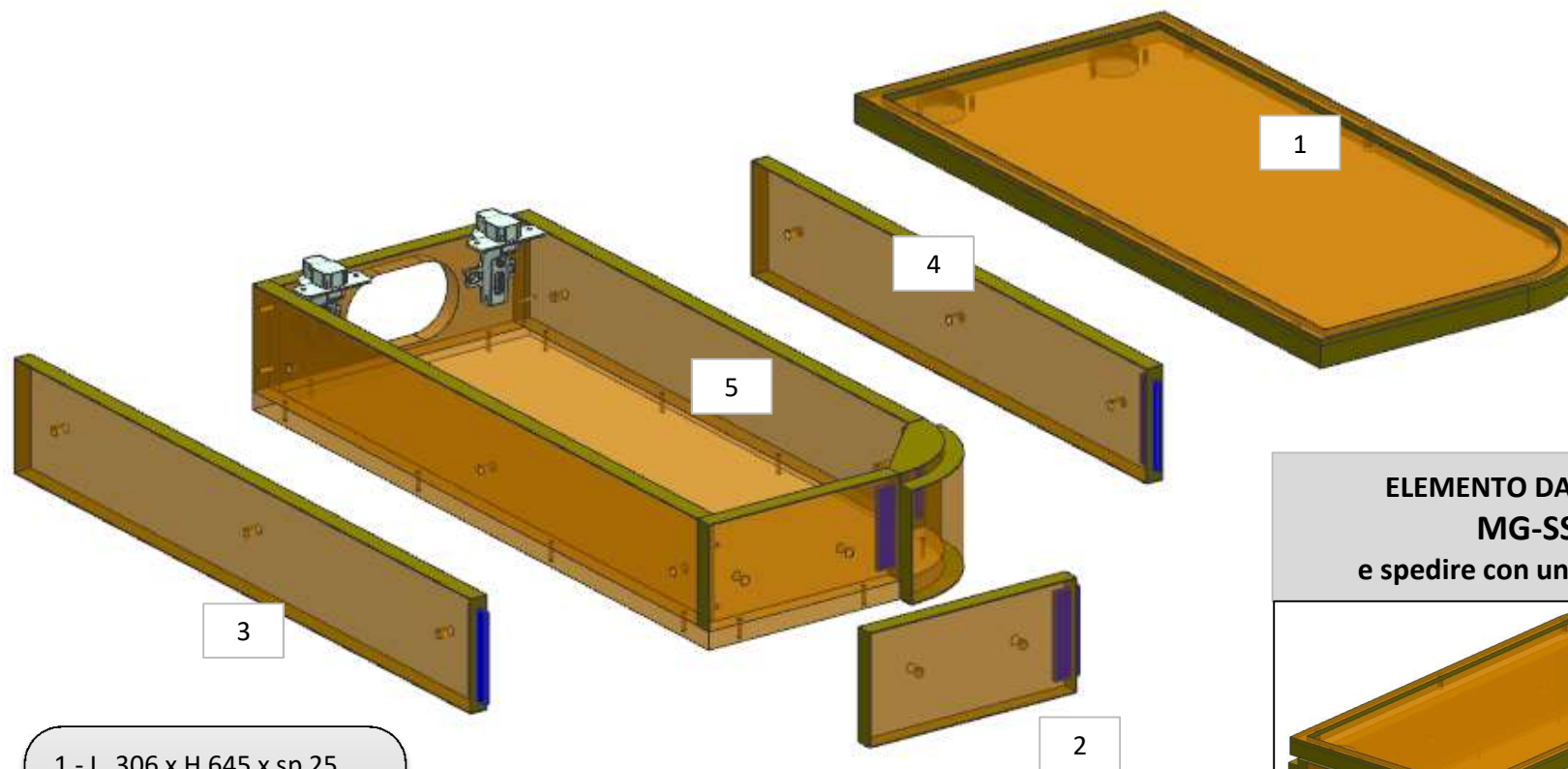
LOCALE	CODICE	DESCRIZIONE COMPONENTE	FINITURA	Q.TA	OPERATORE
SALONE A POPPA	AZ66F-MG_SSP01	COMODINO DIVANO POPPA			Damiano



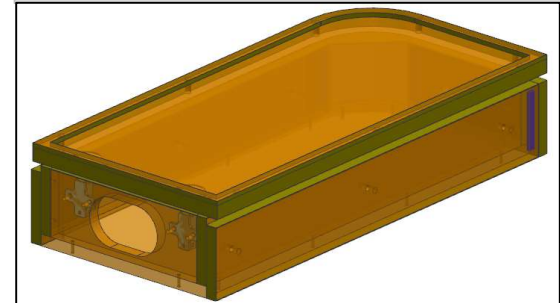
AZ68F

DA MAT. 203 REV. 29-04-2024

LOCALE	CODICE	DESCRIZIONE COMPONENTE	FINITURA	Q.TA	OPERATORE
SALONE A POPPA	AZ66F-R01_SSP01	COMODINO DIVANO POPPA	LASTRA TEAK	5	Damiano



**ELEMENTO DA MONTARE:
MG-SSP01
e spedire con un unico imballo**

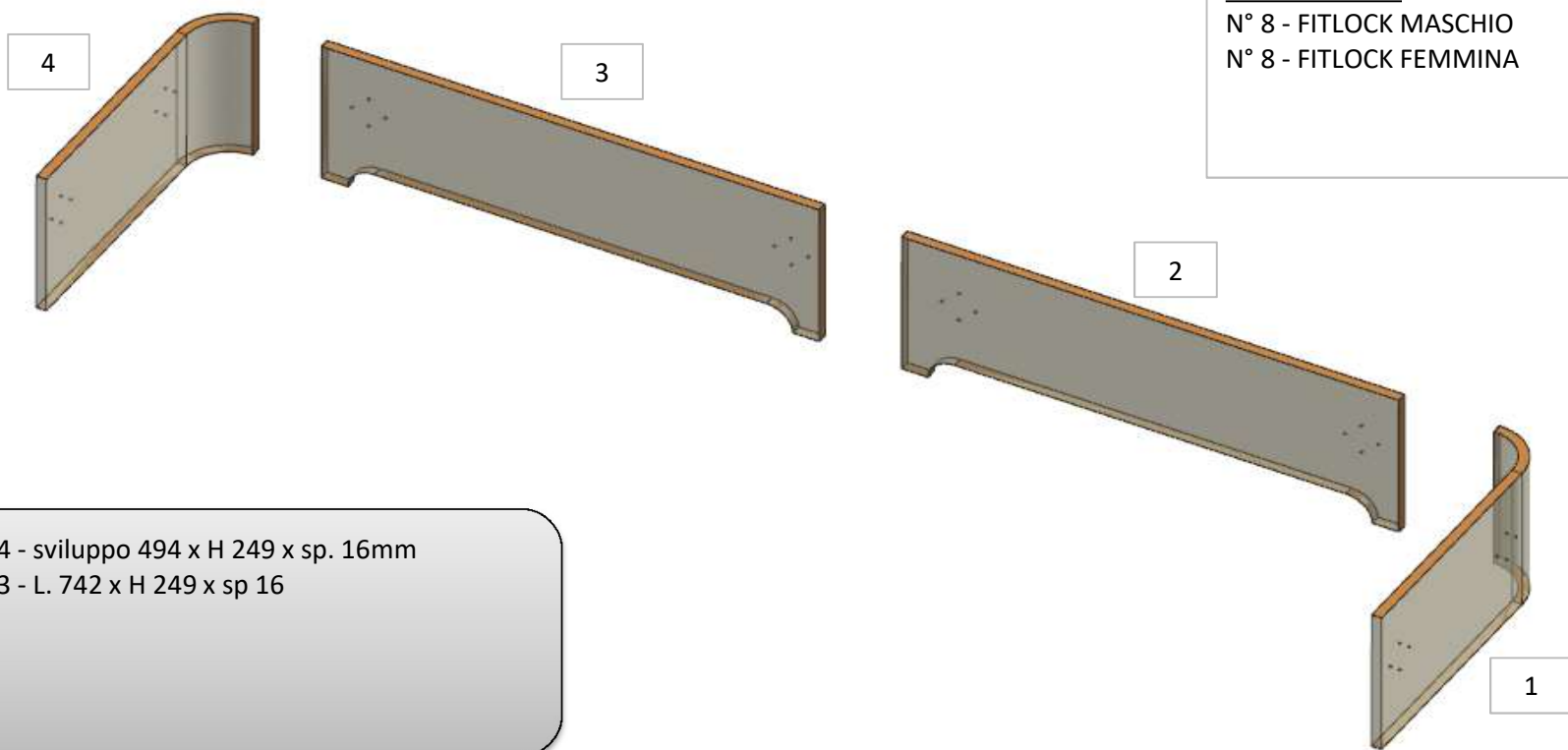


- 1 - L. 306 x H 645 x sp 25
- 2 - L. 205 x H 100 x sp 16
- 3 - L. 634 x H 100 x sp 16
- 4 - L. 549 x H 100 x sp 25
- 5 - L. 274x H 109 x 634

AZ68F

DA MAT. 203 REV. 29-04-2024

LOCALE	CODICE	DESCRIZIONE COMPONENTE	FINITURA	Q.TA	OPERATORE
SALONE A POPPA	AZ66F-R01_SSQ01	DIVANO PRUA	LASTRA CHIARA	4	Damiano



FERRAMENTA:
N° 8 - FITLOCK MASCHIO
N° 8 - FITLOCK FEMMINA

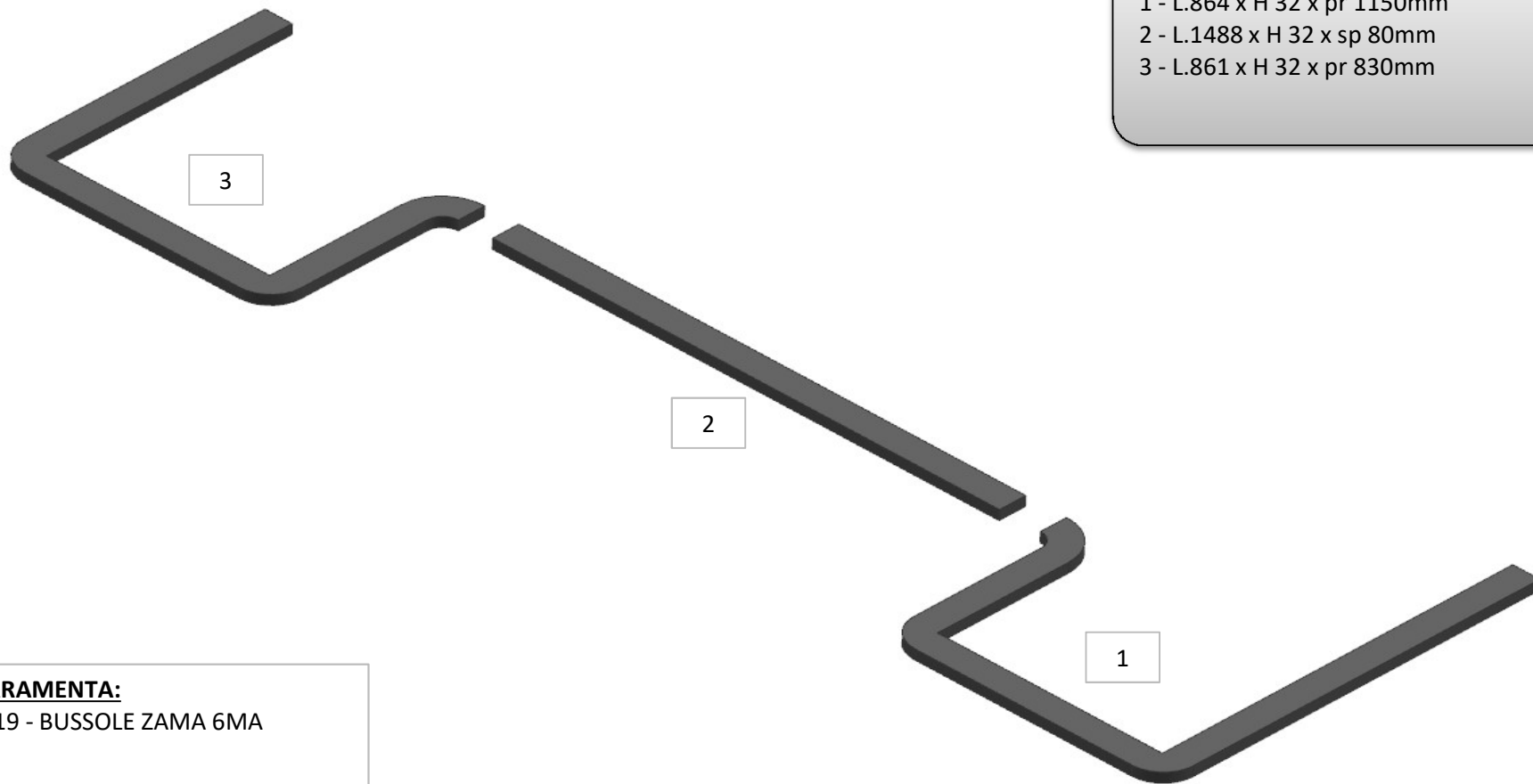
1/4 - sviluppo 494 x H 249 x sp. 16mm
2/3 - L. 742 x H 249 x sp 16

AZ68F

DA MAT. 203 REV. 18-10-2022

LOCALE	CODICE	DESCRIZIONE COMPONENTE	FINITURA	Q.TA	OPERATORE
SALONE A POPPA	AZ66F-L01_SSQ01	DIVANO PRUA	LACCATO MOGANO 100 GLOSS	3	Damiano

- 1 - L.864 x H 32 x pr 1150mm
- 2 - L.1488 x H 32 x sp 80mm
- 3 - L.861 x H 32 x pr 830mm



FERRAMENTA:
N° 19 - BUSSOLE ZAMA 6MA

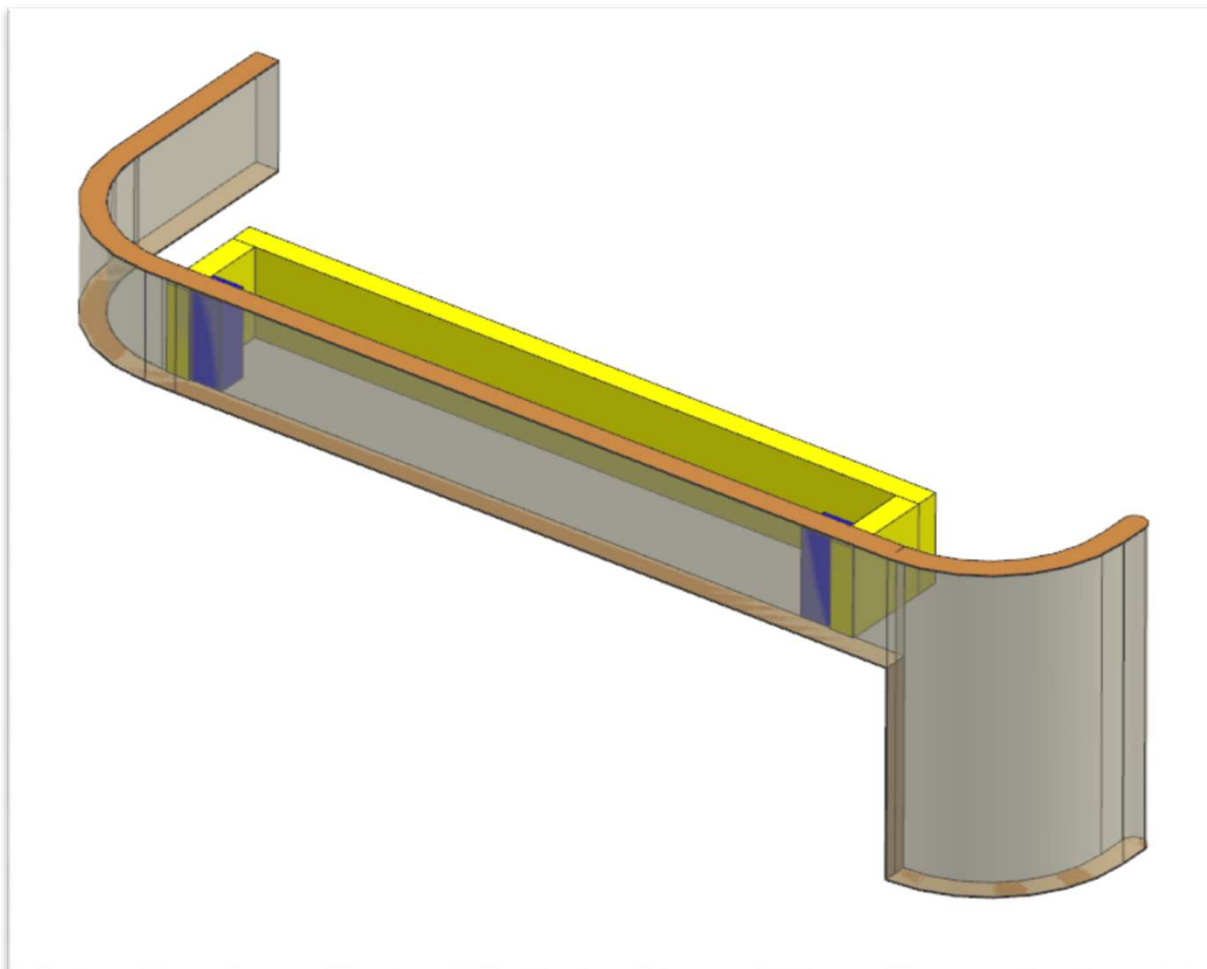
AZ68F

DA MAT. 203 REV. 18-10-2022

LOCALE	CODICE	DESCRIZIONE COMPONENTE	FINITURA	Q.TA	OPERATORE
SALONE A POPPA	AZ66F-MF_SSR01	DIVANO POPPA			Damiano

FERRAMENTA:

N° 2 - FITLOCK MASCHIO
N° 2 - FITLOCK FEMMINA

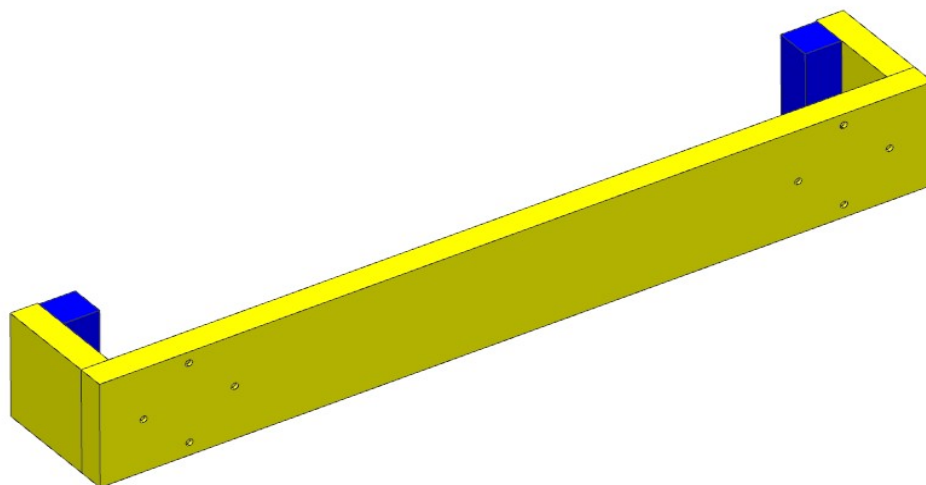


AZ68F

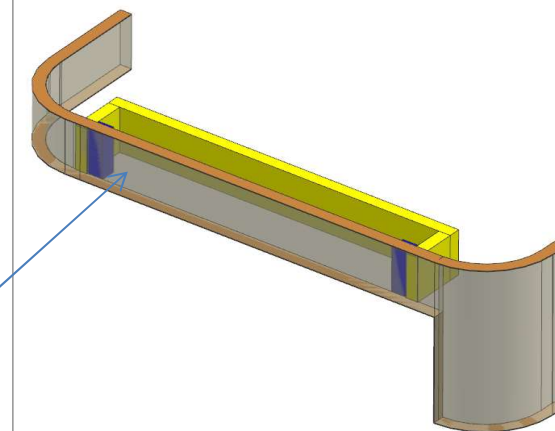
DA MAT. 203 REV. 29-04-2024

LOCALE	CODICE	DESCRIZIONE COMPONENTE	FINITURA	Q.TA	OPERATORE
SALONE A POPPA	AZ68F-SSR01	DIVANO POPPA	OKOUME' GREZZO	1	Damiano

L. 456 x H. 65 x pr. 73mm



ELEMENTO DA MONTARE con:
R01_SSR01
e spedire con un unico imballo



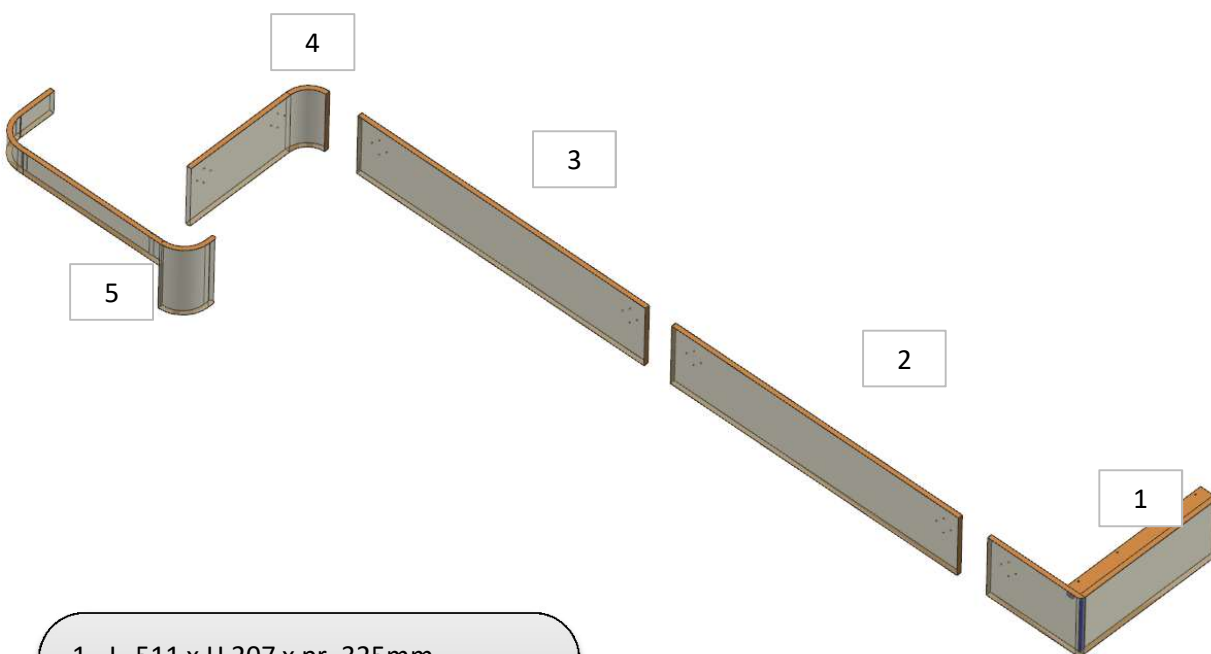
FERRAMENTA:

N° 2 - FITLOCK MASCHIO
N° 2 - FITLOCK FEMMINA

AZ68F

DA MAT. 203 REV. 29-04-2024

LOCALE	CODICE	DESCRIZIONE COMPONENTE	FINITURA	Q.TA	OPERATORE
SALONE A POPPA	AZ66F-R01_SSR01	DIVANO POPPA	LASTRA CHIARA	5	Damiano



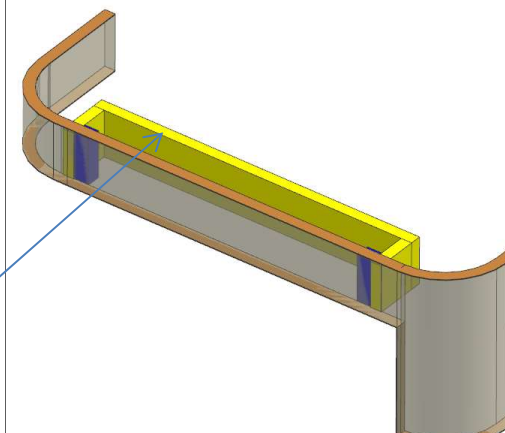
- 1 - L. 511 x H 207 x pr. 325mm
- 2 - L. 998 x H 207 x sp 16
- 3 - L. 1000 x H 207 x sp 16
- 4 - sviluppo 493 x H 207 x sp 16mm
- 5 - L. 674 x H 232 x pr. 217mm

FERRAMENTA:

- N° 7 - FITLOCK MASCHIO
- N° 7 - FITLOCK FEMMINA

ELEMENTO DA MONTARE con:
R01_SSR01
e spedire con un unico imballo

SSR01



consonni&c

AZ68F

DA MAT. 203 REV. 18-10-2022

LOCALE	CODICE	DESCRIZIONE COMPONENTE	FINITURA	Q.TA	OPERATORE
SALONE A POPPA	AZ66F-L01_SSR01	DIVANO POPPA	LACCATO MOGANO 100 GLOSS	2	Damiano

1 - L.720 x H 32 x pr. 589mm
2 - L.2000 x H 32 x sp 32mm

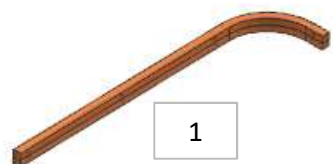


FERRAMENTA:
N° 8 - BUSSOLE ZAMA 6MA

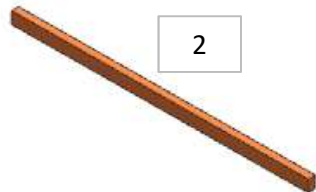
AZ68F

DA MAT. 203 REV. 18-10-2022

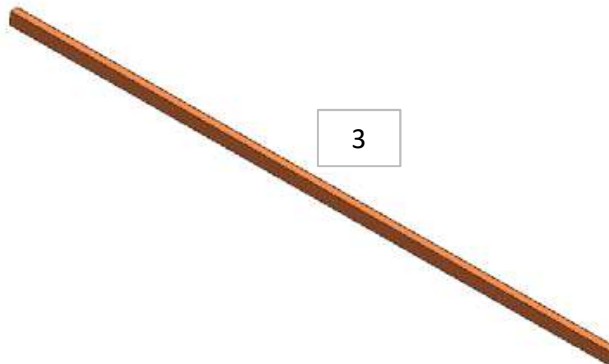
LOCALE	CODICE	DESCRIZIONE COMPONENTE	FINITURA	Q.TA	OPERATORE
SALONE A POPPA	AZ66F-L02_SSR01	DIVANO POPPA	LACCATO BRONZO	5	Damiano



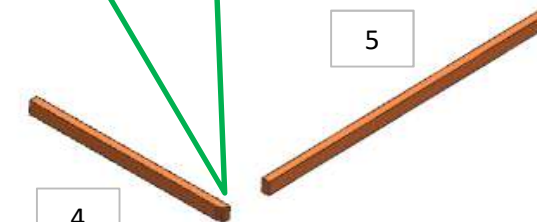
1



2



3



VERIFICARE PRESENZA
TONDO

- 1 - sviluppo 521 x H 24 x sp 12mm
- 2 - L 493 x H 24 x sp 12mm
- 3 - L 998 x H 24 x sp 12mm
- 4 - L 321 x H 24 x sp 12mm
- 5 - L 496 x H 24 x sp 12mm