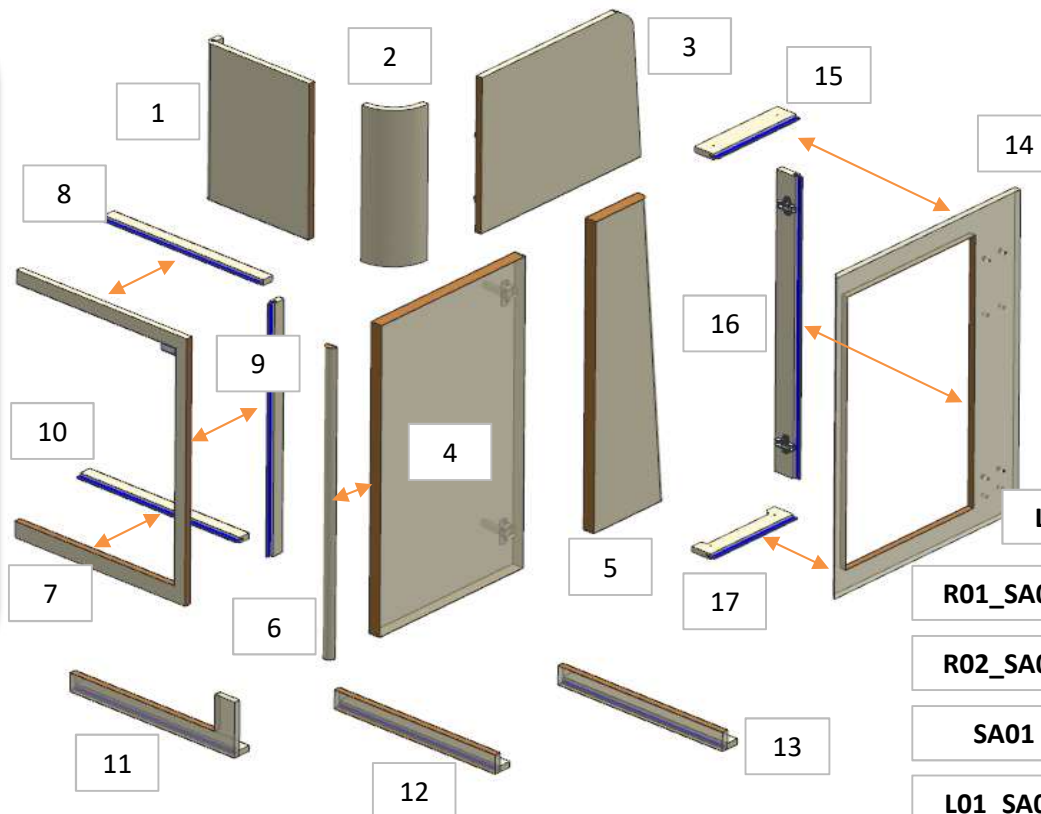


AZ68F

DA MAT. 216 REV. 29-04-2024

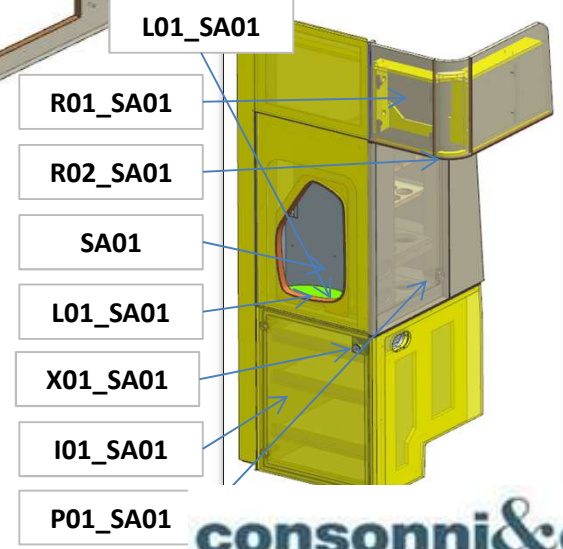
LOCALE	CODICE	DESCRIZIONE COMPONENTE	FINITURA	Q.TA	OPERATORE
SALONE	AZ68F-R01_SA01	COLONNA SX	LASTRA CHIARA	17	Damiano

- 1 - L 300 x H 425 x 41mm
- 2 - L 100 x H 425 x 100mm
- 3 - L 507 x H 425 x sp 16mm
- 4 - L 456 x H 847 x sp 30mm
- 5 - L 227 x H 847 x sp 30mm
- 6 - dia.30 x H 847 mm
- 7 - L 489 x H 726 x sp.16mm
- 8 - L 457 x H 30 x sp. 16 mm
- 9 - L 30 x H 688 x sp. 16mm
- 10 - L 456 x H 30 x sp. 16mm
- 11 - L 472 x H 152 x 47mm
- 12 - L 461 x H 53 x 47 mm
- 13 - L 472 x H 53 x 47 mm
- 14 - L 584 x H 871 x sp.16mm
- 15 - L 261 x H 54 x sp.16mm
- 16 - L 54 x H 820 x sp.16mm
- 17 - L 261 x H 54 x sp.16mm



ELEMENTO DA MONTARE con:
SA01
R02_SA01
L01_SA01
L02_SA01
I01_SA01
P01_SA01
X01_SA01
 e spedire con un unico imballo

238
 MIGLIORATA
 FINITURA INTERNA
 VANI

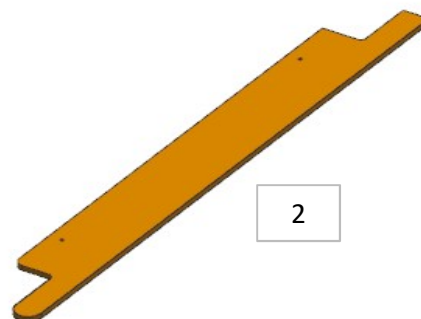
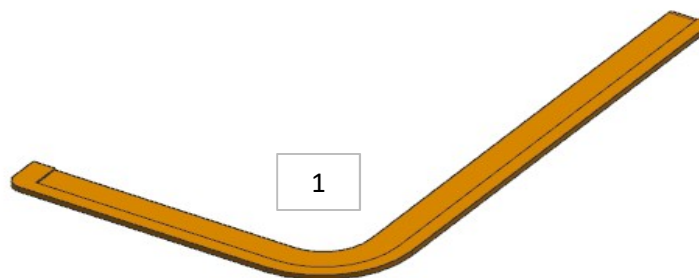


AZ68F

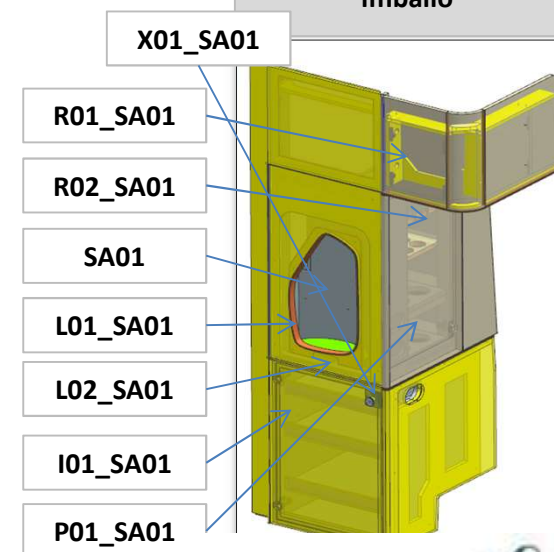
DA MAT. 216 REV. 29-04-2024

LOCALE	CODICE	DESCRIZIONE COMPONENTE	FINITURA	Q.TA	OPERATORE
SALONE	AZ68F-R02_SA01	COLONNA SX	LASTRA TEAK	2	Damiano

1 - L 670.5 x H 76 x sp 6 mm
2 - L 607.5 x H 400 x sp 6 mm



ELEMENTO DA MONTARE con:
SA01
R01_SA01
L01_SA01
L02_SA01
I01_SA01
P01_SA01
X01_SA01
e spedire con un unico imballo



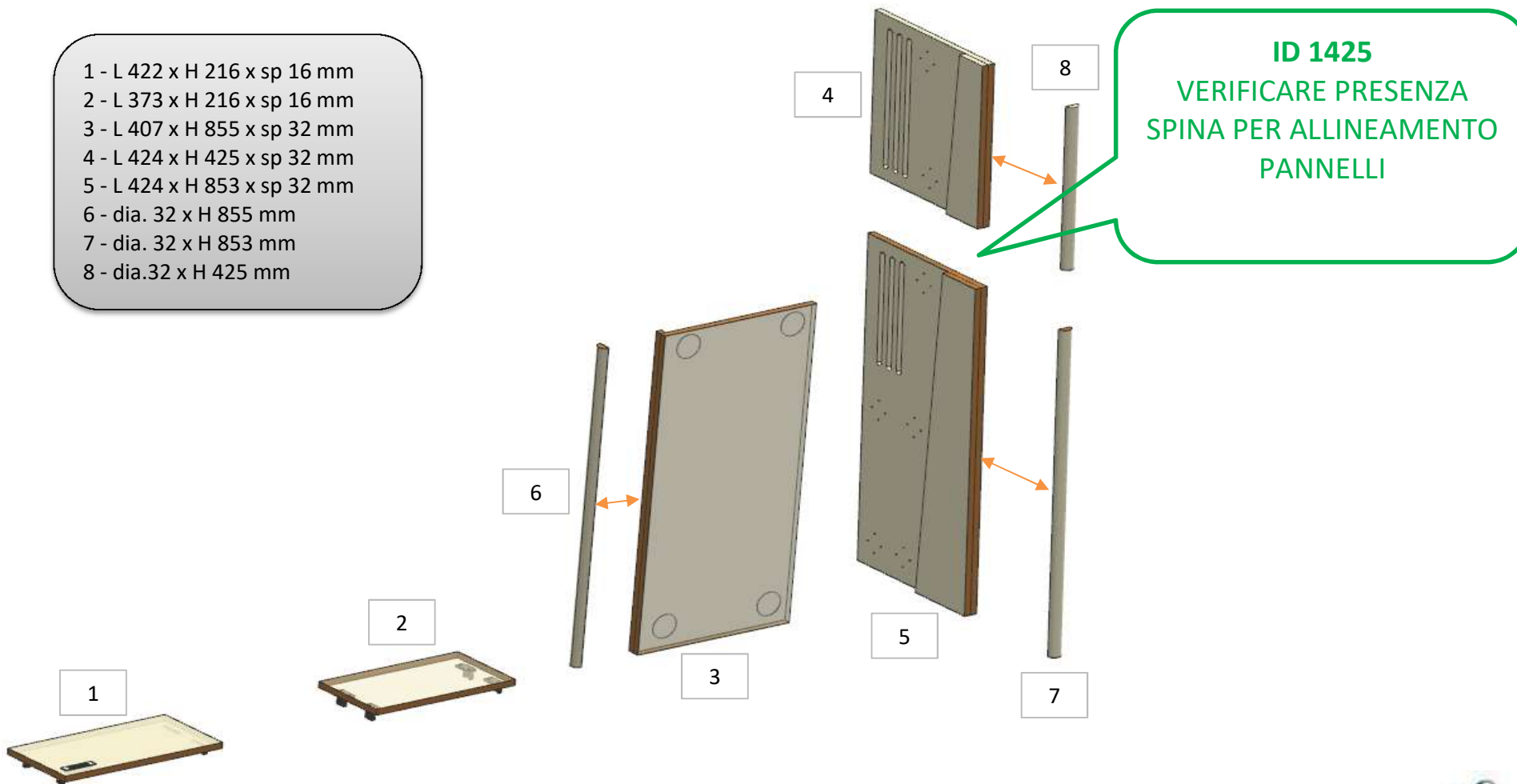
consonni&c

AZ68F

DA MAT. 265 REV. 29-04-2024

LOCALE	CODICE	DESCRIZIONE COMPONENTE	FINITURA	Q.TA	OPERATORE
SALONE	AZ68F-R01_SB01	MURATA BASSA SX POPPA	LASTRA CHIARA	8	Damiano

- 1 - L 422 x H 216 x sp 16 mm
- 2 - L 373 x H 216 x sp 16 mm
- 3 - L 407 x H 855 x sp 32 mm
- 4 - L 424 x H 425 x sp 32 mm
- 5 - L 424 x H 853 x sp 32 mm
- 6 - dia. 32 x H 855 mm
- 7 - dia. 32 x H 853 mm
- 8 - dia.32 x H 425 mm

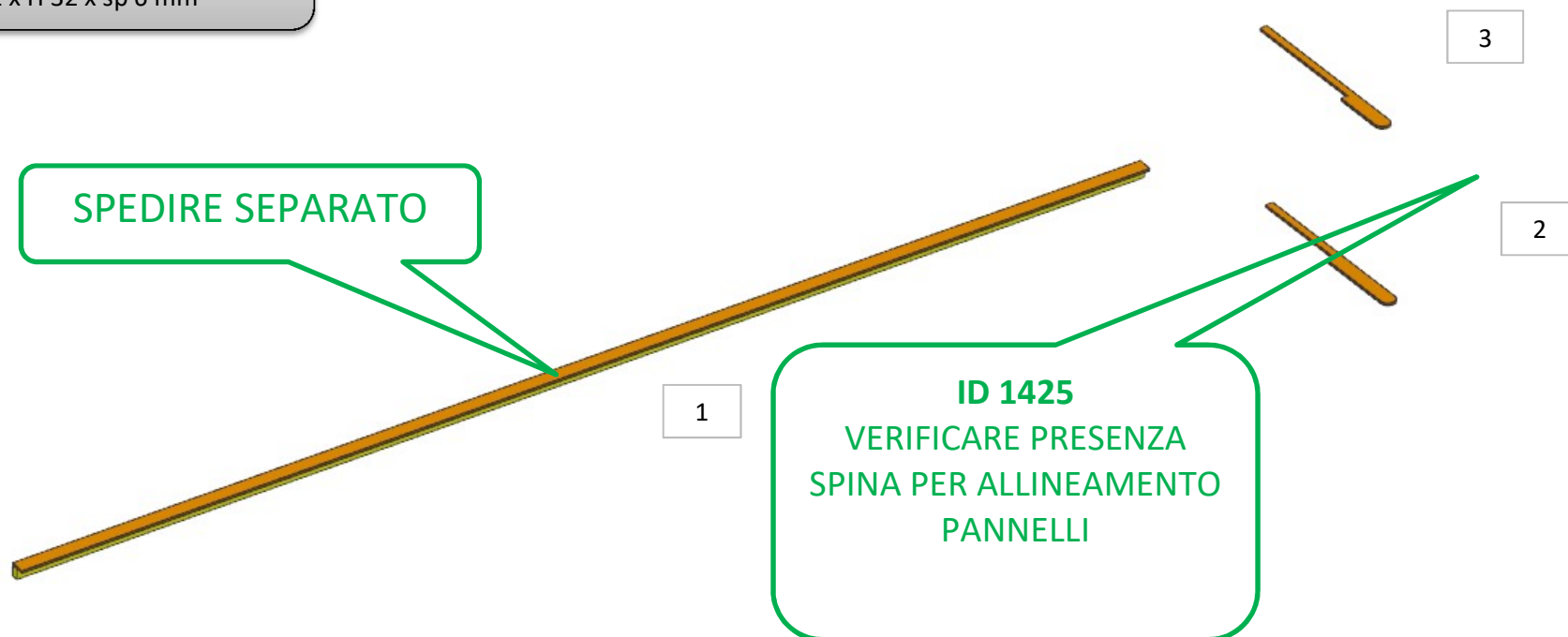


AZ68F

DA MAT. 265 REV. 29-04-2024

LOCALE	CODICE	DESCRIZIONE COMPONENTE	FINITURA	Q.TA	OPERATORE
SALONE	AZ68F-R02_SB01	MURATA BASSA SX POPPA	LASTRA TEAK	3	Damiano

- 1 - L 2540,8 x H 32 x 30 mm
- 2 - L 441 x H 32 x sp 6 mm
- 3 - L 441 x H 32 x sp 6 mm

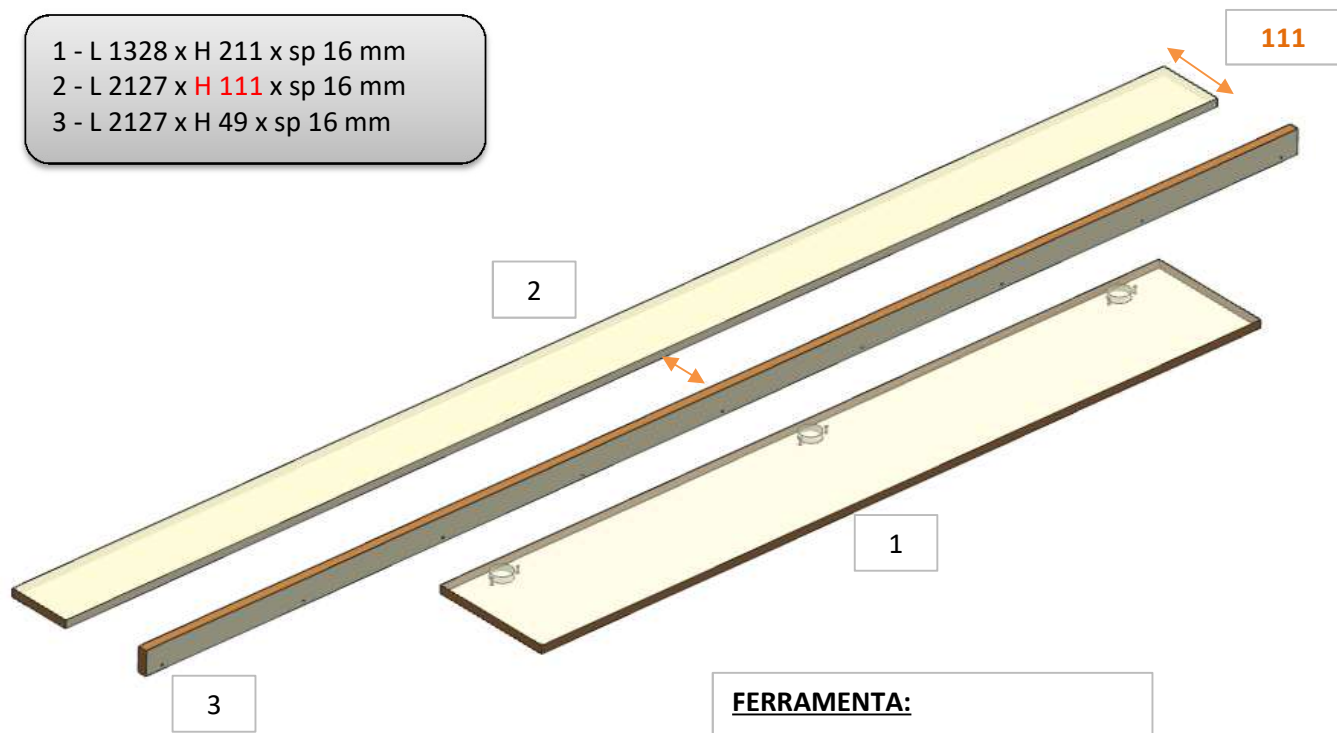


AZ68F

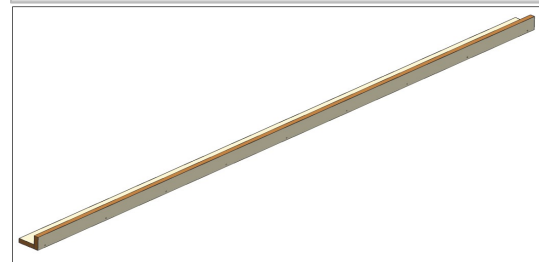
DA MAT.216 REV. 29-04-2024

LOCALE	CODICE	DESCRIZIONE COMPONENTE	FINITURA	Q.TA	OPERATORE
SALONE	AZ68F-R01_SC01	MURATA BASSA TV	LASTRA CHIARA	3	Damiano

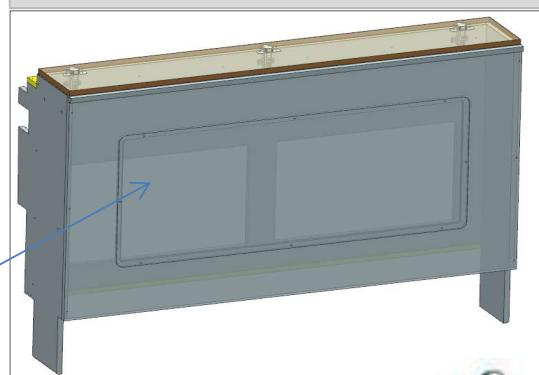
- 1 - L 1328 x H 211 x sp 16 mm
- 2 - L 2127 x H 111 x sp 16 mm
- 3 - L 2127 x H 49 x sp 16 mm



**ELEMENTO N.2-3 DA MONTARE:
MG_SC01
e spedire con un unico imballo**



**ELEMENTO N.1 DA MONTARE con:
SC01
e spedire con un unico imballo**



- FERRAMENTA:**
- N° 3 - CERNIERA PIANA SENZA MOLLA
 - N° 3 - Basetta H6
 - N° 12 - ANKOR BOARGHI
 - N° 2 - GOMMINO PARACOLPI
 - N° 6 - BUSSOLA ZAMA 6MA

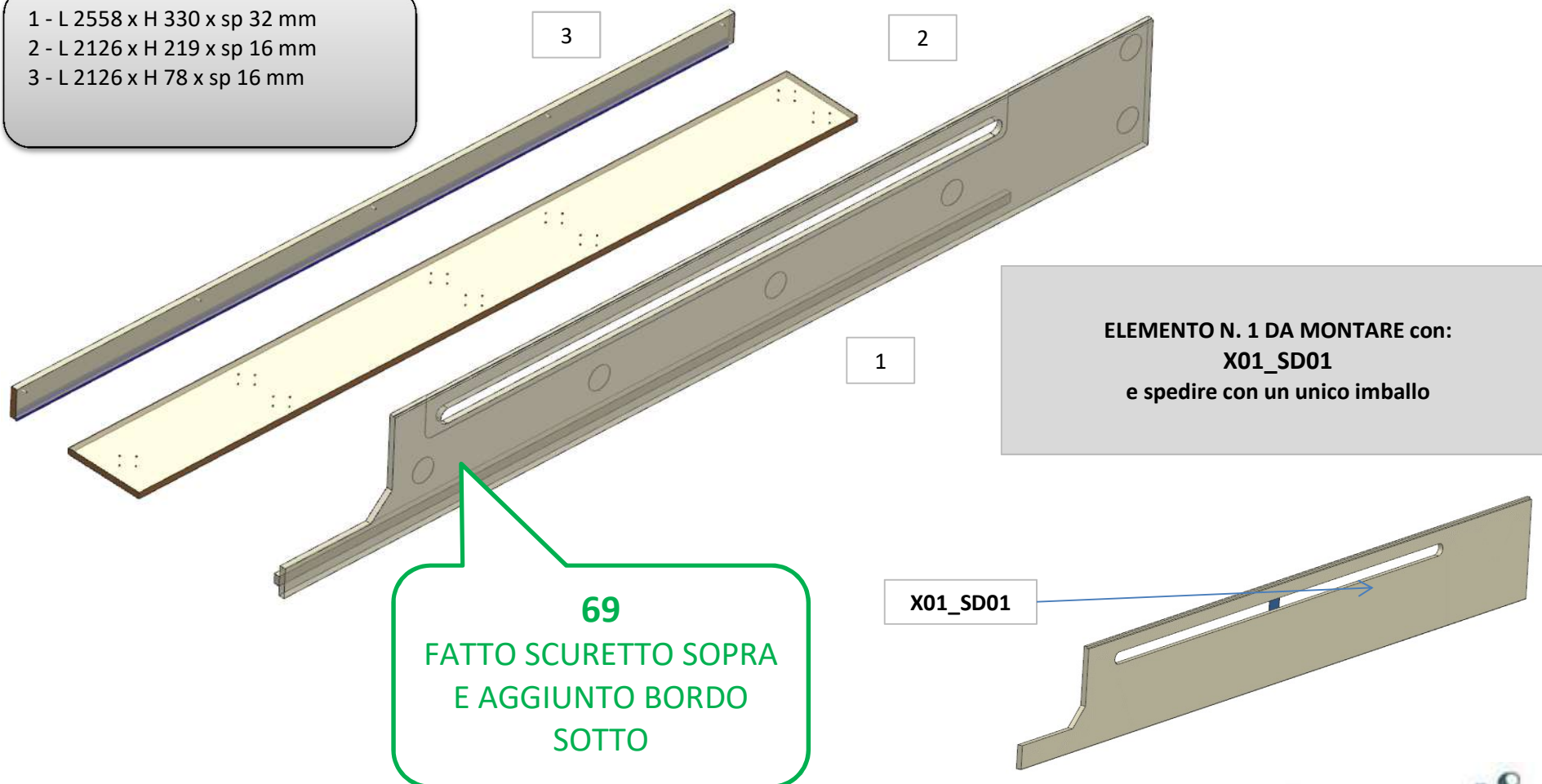
SC01

AZ68F

DA MAT. 265 REV. 29-04-2024

LOCALE	CODICE	DESCRIZIONE COMPONENTE	FINITURA	Q.TA	OPERATORE
SALONE	AZ68F-R01_SD01	PLENUM AC MURATA SX	LASTRA CHIARA	3	Damiano

- 1 - L 2558 x H 330 x sp 32 mm
- 2 - L 2126 x H 219 x sp 16 mm
- 3 - L 2126 x H 78 x sp 16 mm

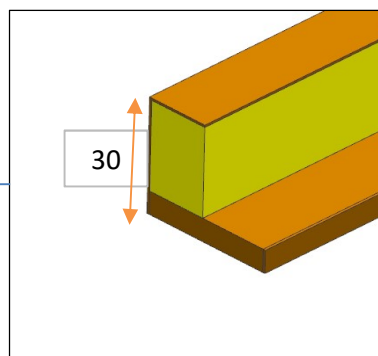
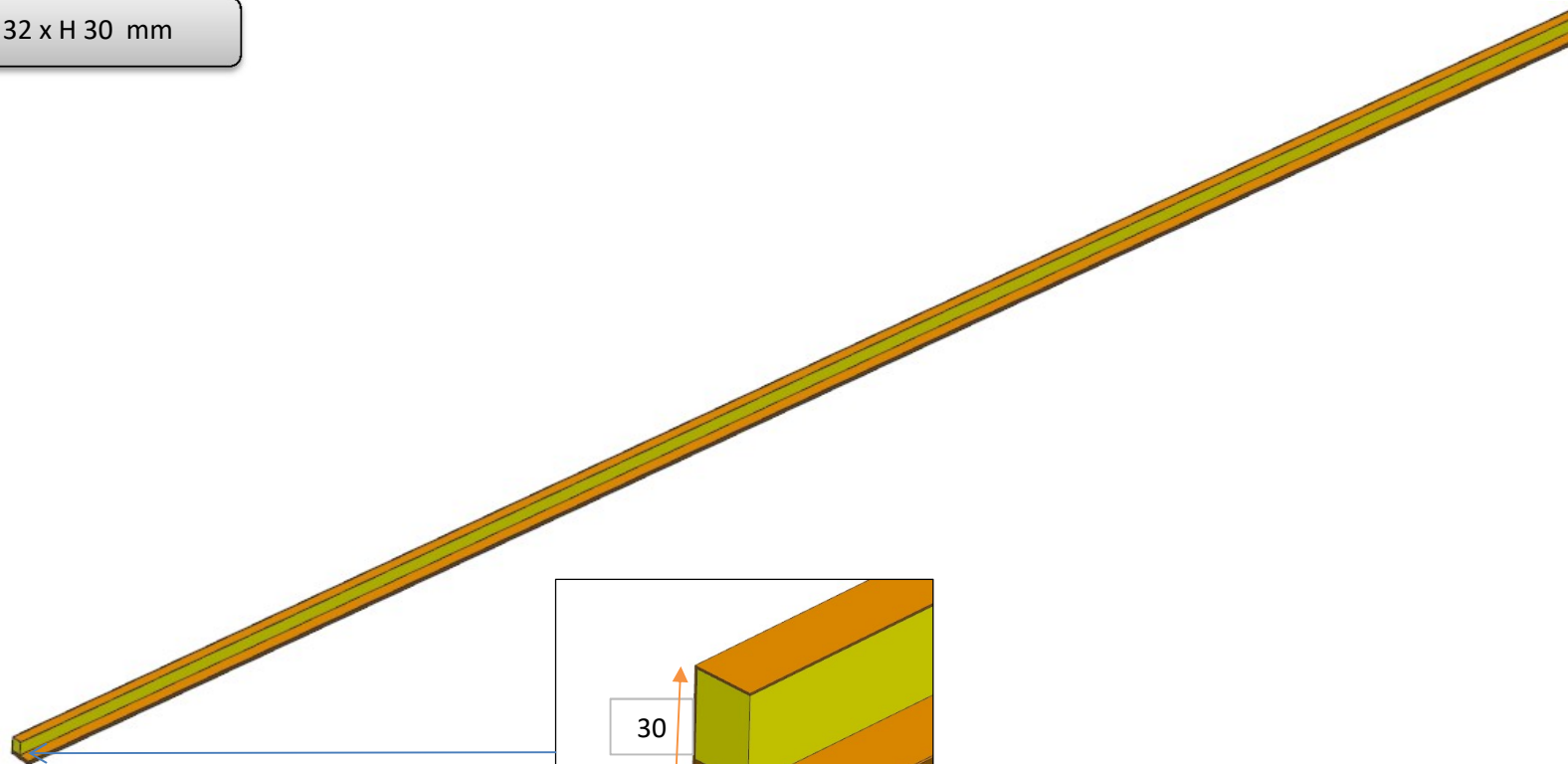


AZ68F

REV.265 REV. 29-04-2024

LOCALE	CODICE	DESCRIZIONE COMPONENTE	FINITURA	Q.TA	OPERATORE
SALONE	AZ68F-R02_SD01	PLENUM AC MURATA SX	LASTRA TEAK	1	Damiano

1 - L 2558 x 32 x H 30 mm



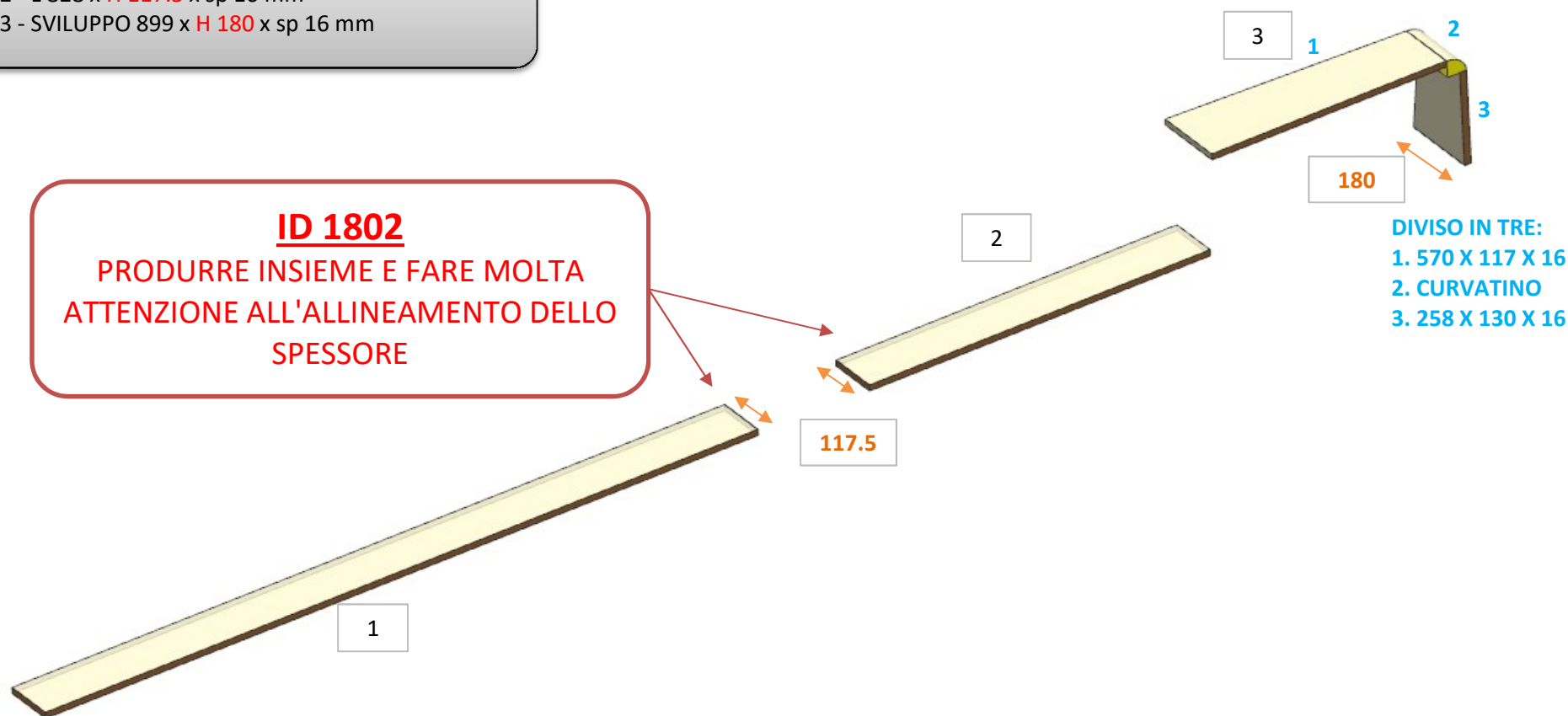
AZ68F

DA MAT. 265 REV. 29-04-2024

LOCALE	CODICE	DESCRIZIONE COMPONENTE	FINITURA	Q.TA	OPERATORE
SALONE	AZ68F-R01_SE01	MURATA BASSA SX PRUA	LASTRA CHIARA	3	Damiano

- 1 - L 1731 x H 117.5 x sp 16 mm
- 2 - L 828 x H 117.5 x sp 16 mm
- 3 - SVILUPPO 899 x H 180 x sp 16 mm

ID 1802
PRODURRE INSIEME E FARE MOLTA
ATTENZIONE ALL'ALLINEAMENTO DELLO
SPESSORE



AZ68F

DA MAT. 265 REV. 29-04-2024

LOCALE	CODICE	DESCRIZIONE COMPONENTE	FINITURA	Q.TA	OPERATORE
SALONE	AZ68F-R02_SE01	MURATA BASSA SX PRUA	LASTRA TEAK	2	Damiano

- 1 - L 1732 x H 42 x sp 20 mm
- 2 - SVILUP. 936 x H 42 x sp mm
- 3 - SVILUP. 1217 x H 42 x sp 20 mm

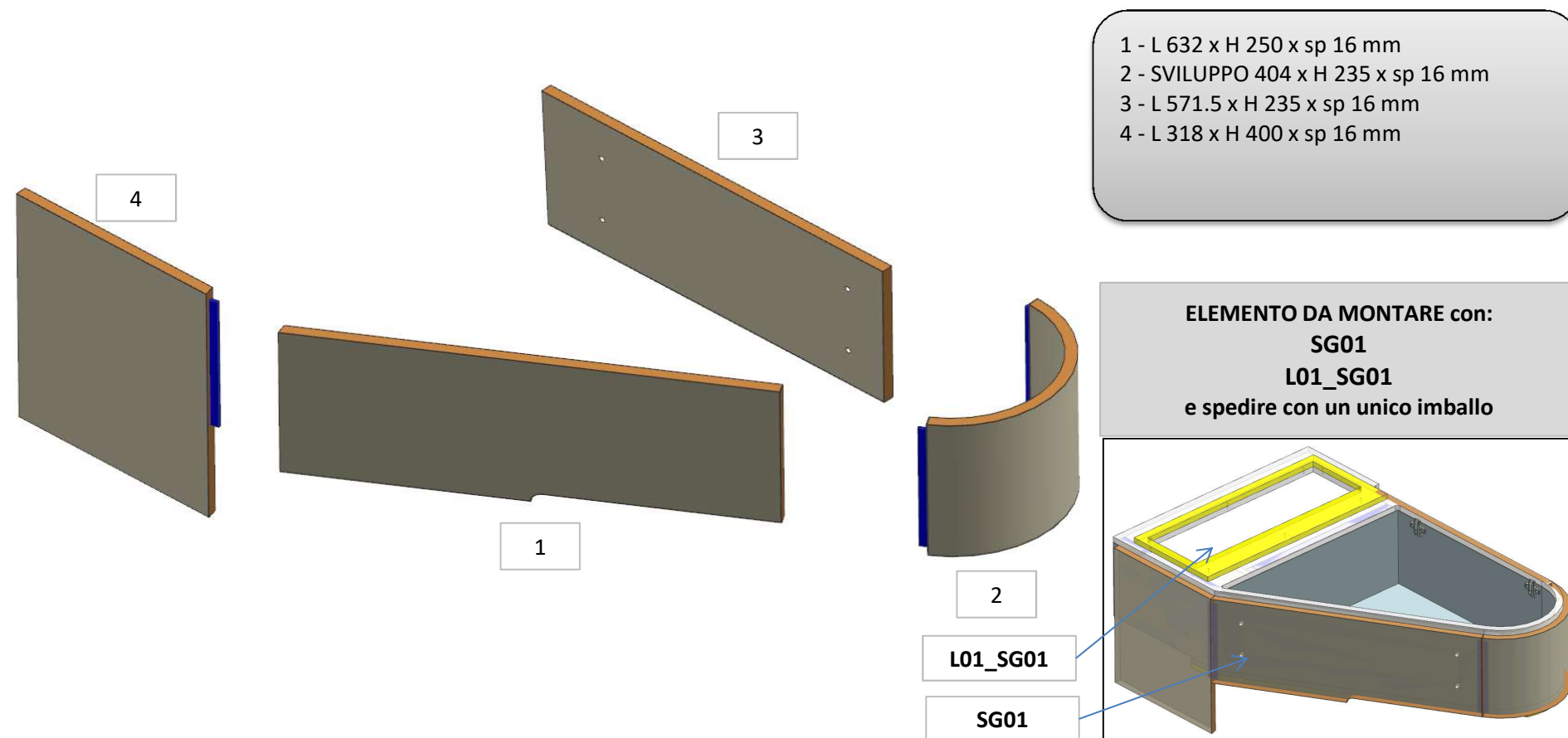


ID 1802
PRODURRE INSIEME E FARE MOLTA
ATTENZIONE ALL'ALLINEAMENTO DELLO
SPESSORE

AZ68F

DA MAT. 216 REV. 29-04-2024

LOCALE	CODICE	DESCRIZIONE COMPONENTE	FINITURA	Q.TA	OPERATORE
SALONE	AZ68F-R01_SG01	CASSAPANCA SX	LASTRA CHIARA	4	Damiano



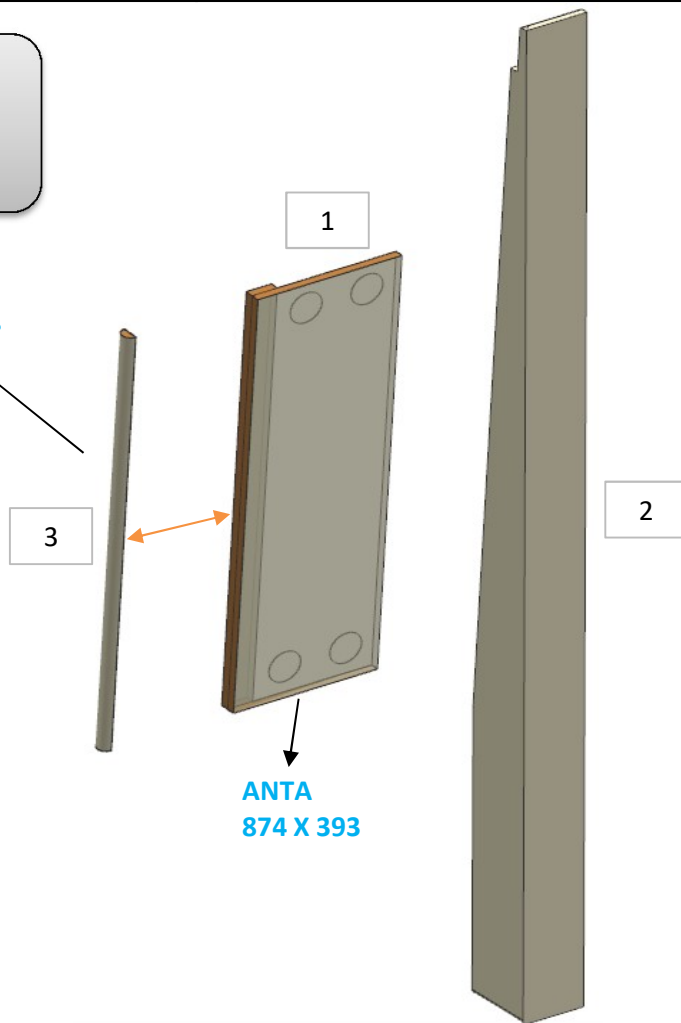
AZ68F

DA MAT.201 REV. 29-04-2024

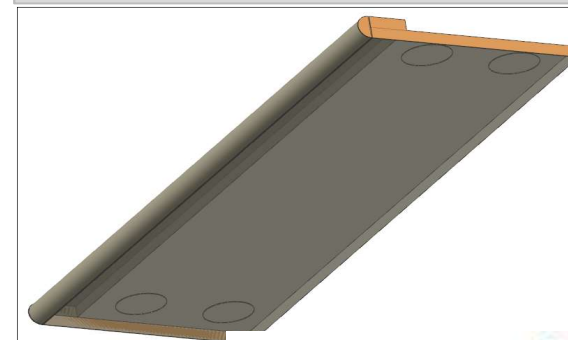
LOCALE	CODICE	DESCRIZIONE COMPONENTE	FINITURA	Q.TA	OPERATORE
SALONE	AZ68F-R01_SH01	COLONNA POPPA MURATA DX	LASTRA CHIARA	3	Damiano

- 1 - L 285 x H 874 x sp 32 mm
- 2 - L 119.5 x H 2025 x 141 mm
- 3 - dia. 32 x H 874

CURVATINO
SEPARATO
874 X 32 X 16



ELEMENTO N.1-3 DA MONTARE:
MG_SH01
e spedire con un unico imballo



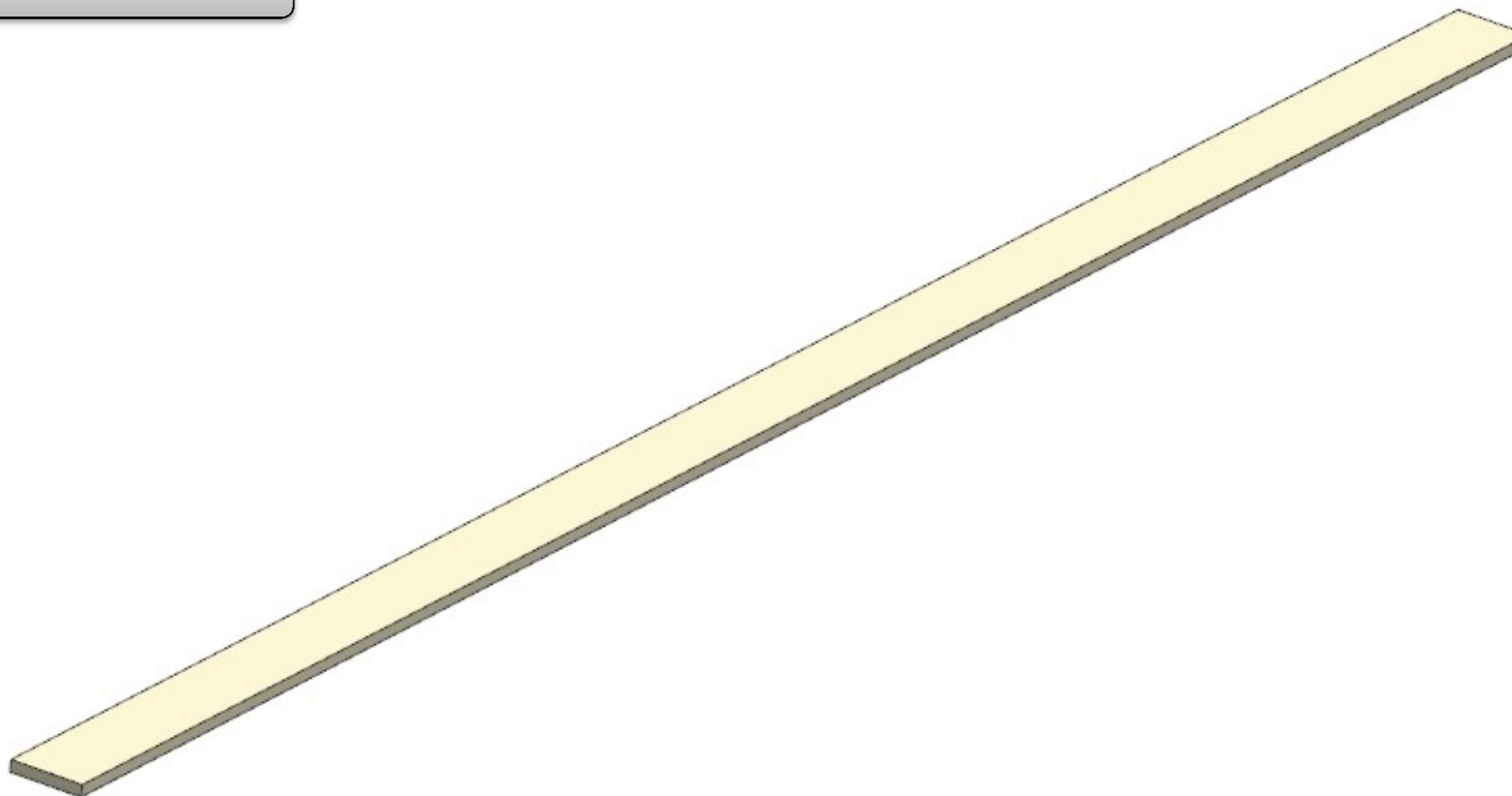
consonni&c

AZ68F

REV. 29-04-2024

LOCALE	CODICE	DESCRIZIONE COMPONENTE	FINITURA	Q.TA	OPERATORE
SALONE	AZ68F-R01_SI01	STRUTTURA MURATA BASSA DX	LASTRA CHIARA	1	Damiano

1 - L 2430 x H 84 x sp 15 mm



AZ68F

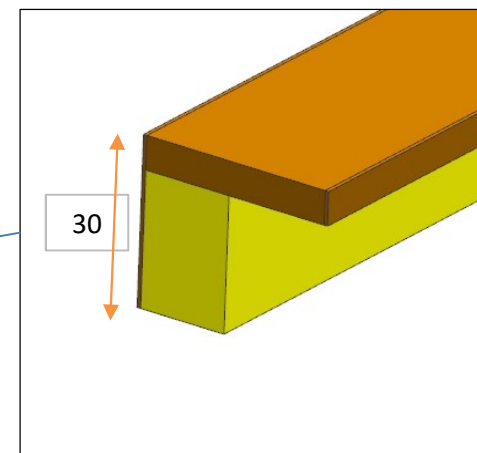
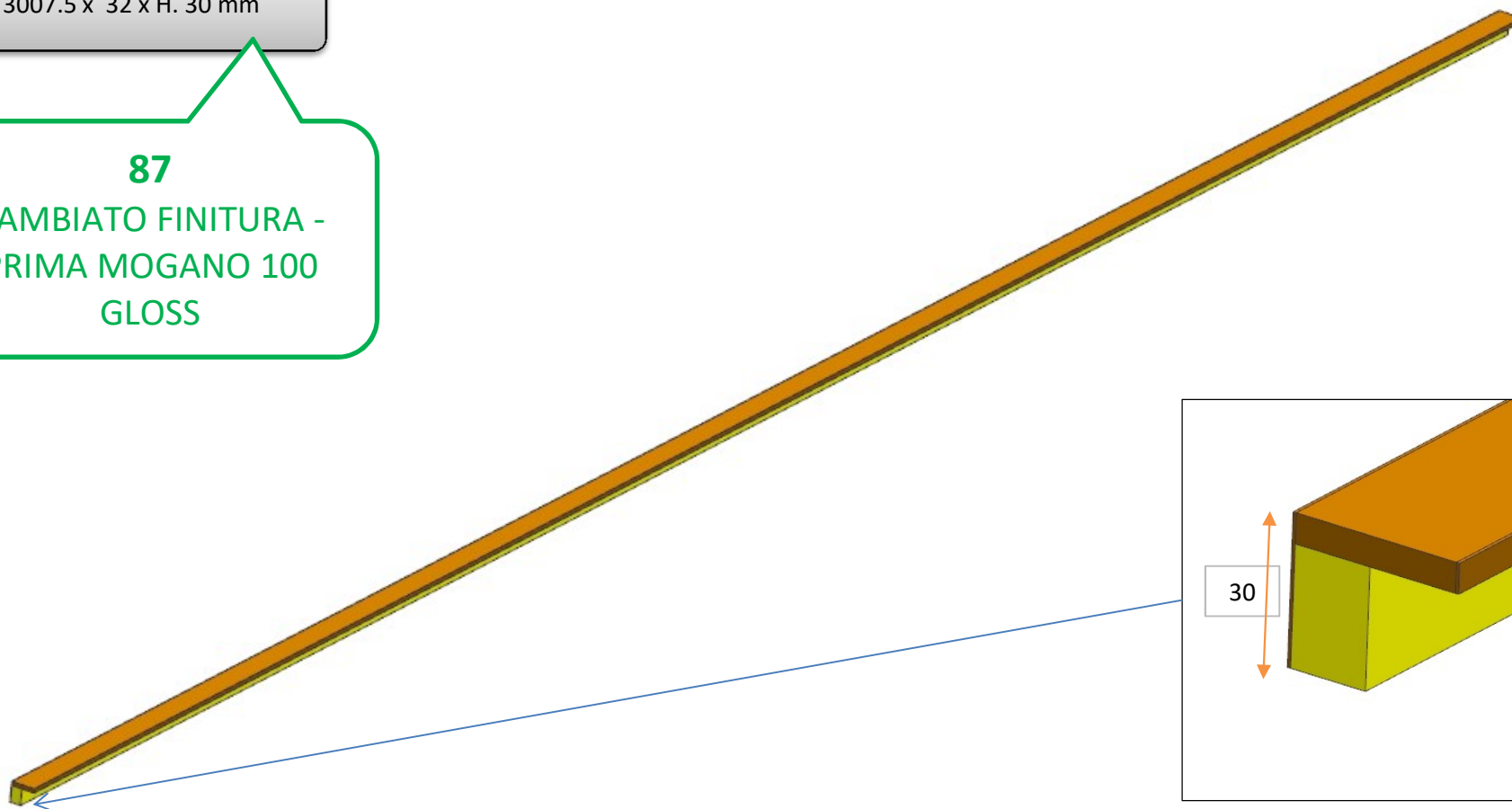
REV.2024 REV. 29-04-2024

LOCALE	CODICE	DESCRIZIONE COMPONENTE	FINITURA	Q.TA	OPERATORE
SALONE	AZ68F-R02_SI01	STRUTTURA MURATA BASSA DX	LASTRA TEAK	1	Damiano

1 - L 3007.5 x 32 x H. 30 mm

87

CAMBIATO FINITURA -
PRIMA MOGANO 100
GLOSS



consonni&c

AZ68F

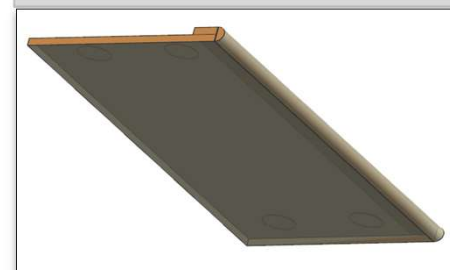
DA MAT. 265 REV. 29-04-2024

LOCALE	CODICE	DESCRIZIONE COMPONENTE	FINITURA	Q.TA	OPERATORE
SALONE	AZ68F-R01_SL01	COLONNA PLENUM DX PRUA	LASTRA CHIARA	3	Damiano

- 1 - L 3007.5 x H 310.5 x sp 16 mm
- 2 - L 391 x H 874 x sp 32 mm
- 3 - dia. 32 x H 874 mm

1

ELEMENTO N.2-3 DA MONTARE:
MG_SL01
e spedire con un unico imballo



69

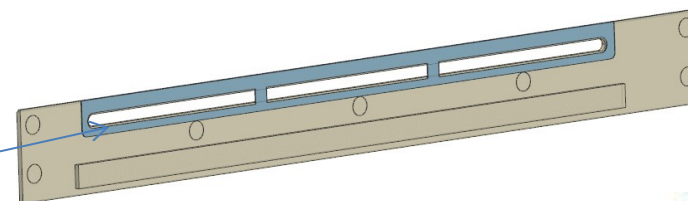
FATTO SCURETTO SOPRA
E AGGIUNTO BORDO
SOTTO

3

2

ELEMENTO N.1 DA MONTARE con:
X01_SL01
e spedire con un unico imballo

X01_SL01



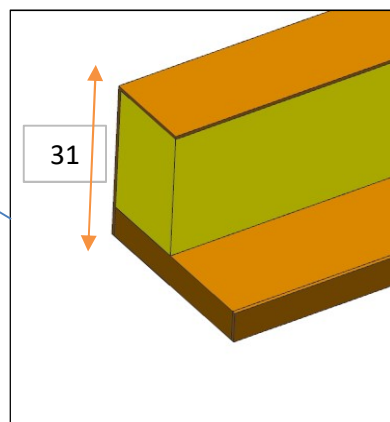
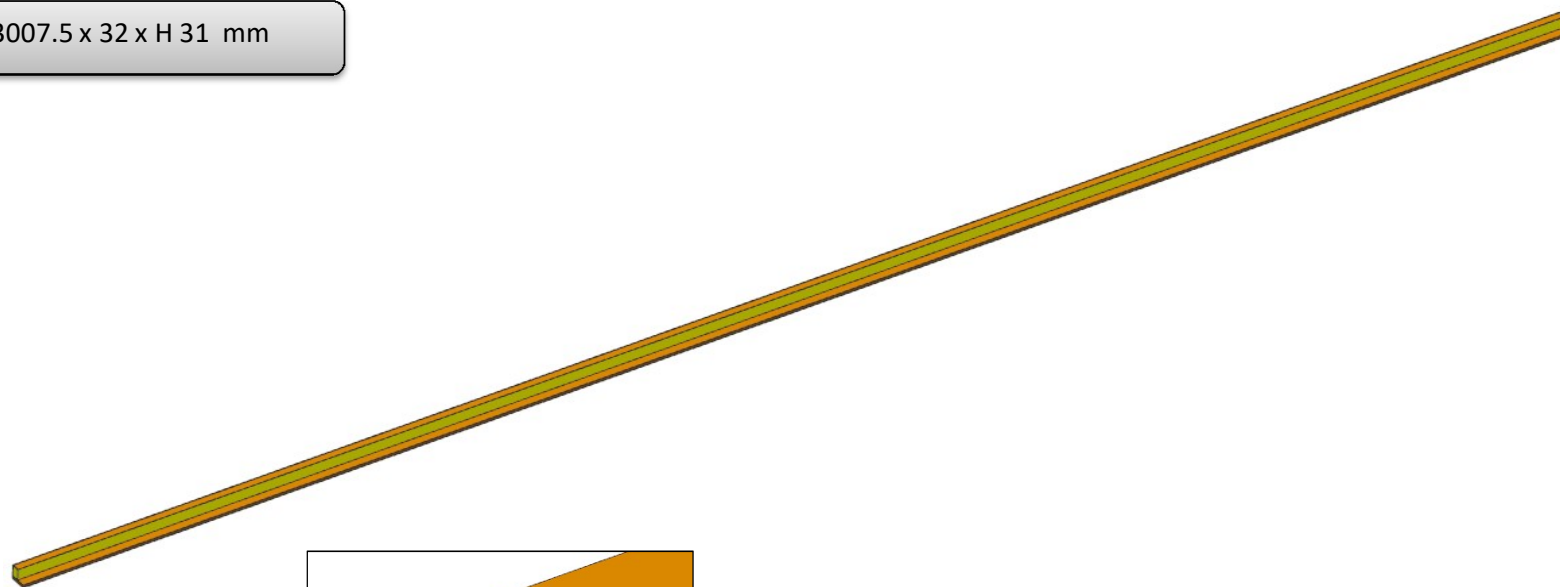
consonni&c

AZ68F

DA MAT.265 REV. 29-04-2024

LOCALE	CODICE	DESCRIZIONE COMPONENTE	FINITURA	Q.TA	OPERATORE
SALONE	AZ68F-R02_SL01	COLONNA PLENUM DX PRUA	LASTRA TEAK	1	Damiano

1 - L 3007.5 x 32 x H 31 mm



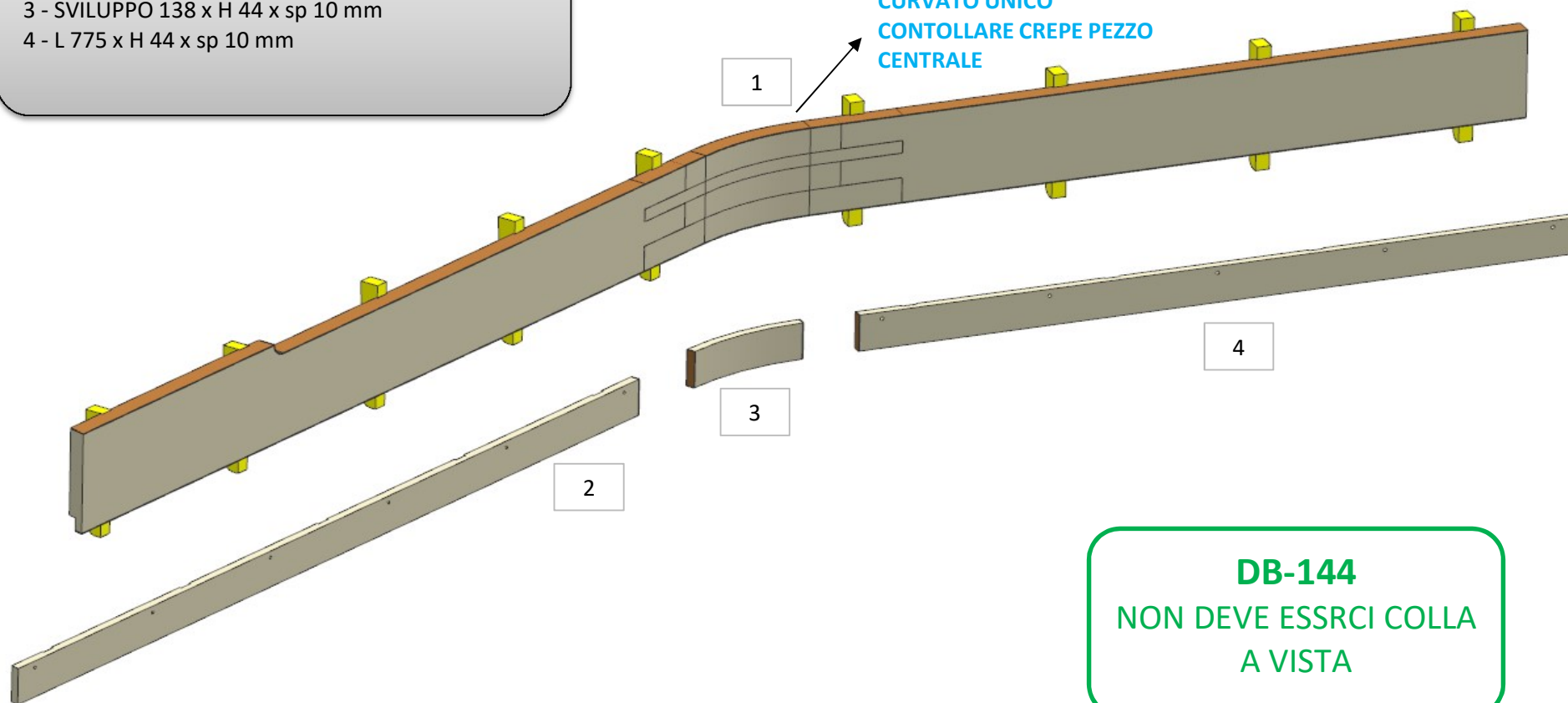
AZ68F

DA MAT. 265 REV. 29-04-2024

LOCALE	CODICE	DESCRIZIONE COMPONENTE	FINITURA	Q.TA	OPERATORE
SALONE	AZ68F-R01_SM01	GRADINO ALTO	LASTRA CHIARA	4	Damiano

- 1 - SVILUPPO 1938 x H 122 x 16 mm
- 2 - L 1027 x H 44 x sp 10 mm
- 3 - SVILUPPO 138 x H 44 x sp 10 mm
- 4 - L 775 x H 44 x sp 10 mm

CURVATO UNICO
CONTROLLARE CREPE PEZZO
CENTRALE



AZ68F

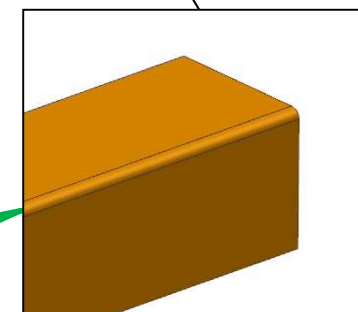
DA MAT. 265 REV. 29-04-2024

LOCALE	CODICE	DESCRIZIONE COMPONENTE	FINITURA	Q.TA	OPERATORE
SALONE	AZ68F-R02_SM01	GRADINO ALTO	LASTRA TEAK	1	Damiano

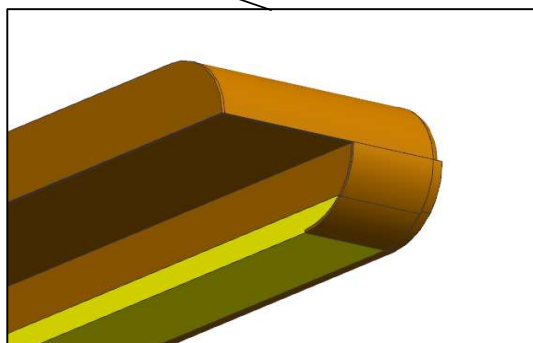
1 - L 1633 (sviluppo) x H 30 x sp 50 mm



202
SPIGOLO SMUSSATO.
ra. 2mm



DETTAGLIO SPIGOLO



DETTAGLIO RETRO

AZ68F

DA MAT. 216 REV. 29-04-2024

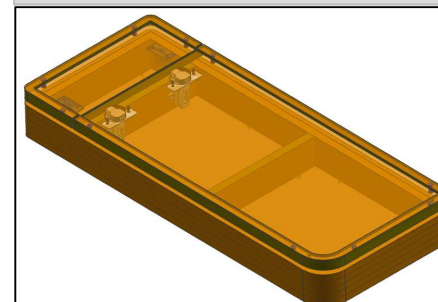
LOCALE	CODICE	DESCRIZIONE COMPONENTE	FINITURA	Q.TA	OPERATORE
SALONE	AZ68F-R01_SO01	COMODINO DIVANO SX POPPA	LASTRA TEAK	7	Damiano

- 1 - L 300 x H 600 x sp 25 mm
- 2 - L 300 x H 124 x sp 25 mm
- 3 - L 267.5 x H 694.5 x sp 16 mm
- 4 - L 236 x H 71 x sp 16 mm
- 5 - L 236 x H 71 x sp 16 mm
- 6 - L 236 x H 71 x sp 16 mm
- 7 - L 727 x H 695 x 16 mm

FERRAMENTA:

- N° 2 - CERNIERA PIANA
- N° 2 - BASETTA H6
- N° 8 - ANKOR BORGHI
- N° 2 - GOMMINO PARACOLPI
- N° 2 - KEKU FRONTALE
- N° 1 - PISTONE GAS FRIZIONATO
- N° 20 - BUSSOLA ZAMA 6MA

ELEMENTO DA MONTARE:
MG_SO01
 e spedire con un unico imballo



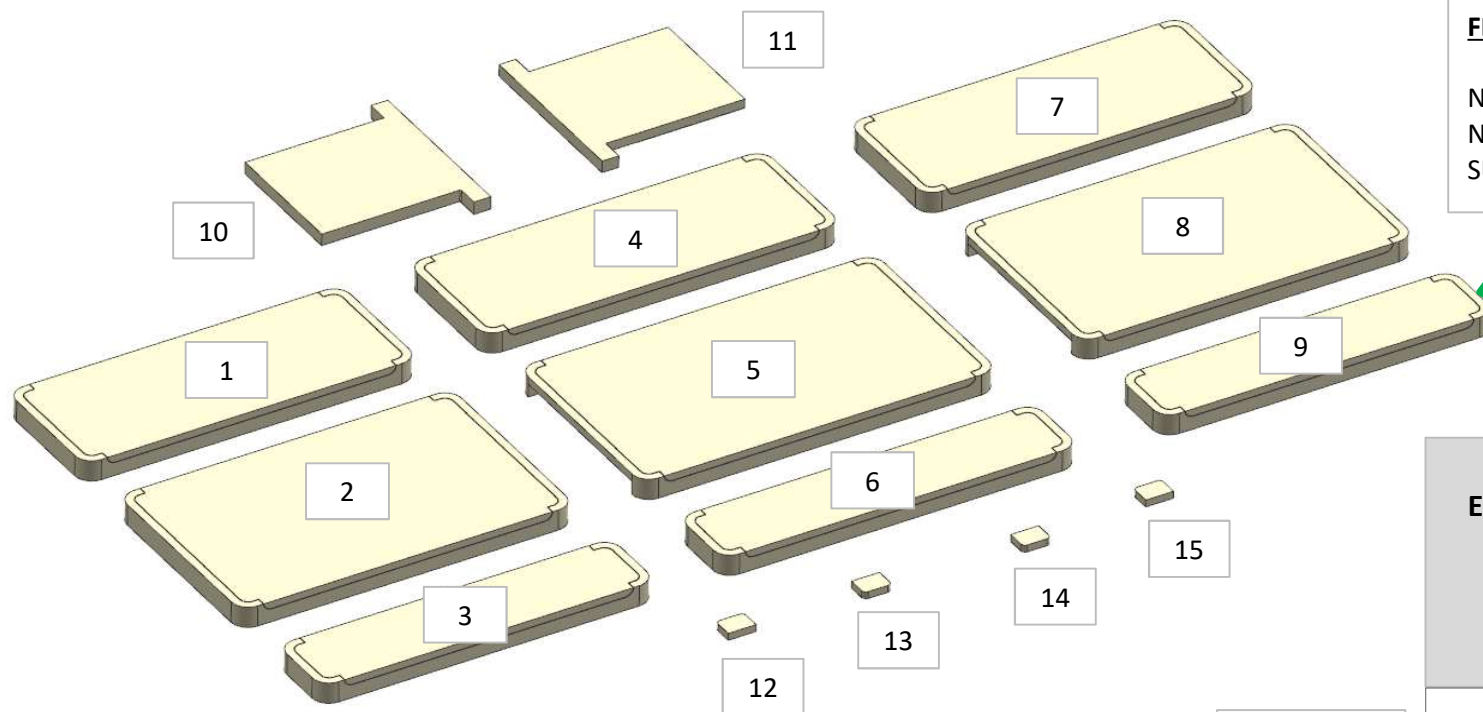
mod. int.
 RIVISTO SISTEMA
 ASSEMBLAGGIO MOBILE

consonni&c

AZ68F

DA MAT. 201 REV. 29-04-2024

LOCALE	CODICE	DESCRIZIONE COMPONENTE	FINITURA	Q.TA	OPERATORE
SALONE	AZ68F-R01_SP01	TAVOLO HI-LOW OPT	LASTRA CHIARA	15	Damiano



FERRAMENTA:

N° 12 - CERNIERA A BISCOTTO
 N° 8 - CALAMITE M/F PER CASSETTI
 SUGATSUNE

da mat.202 piani
 realizzati senza
 incisioni

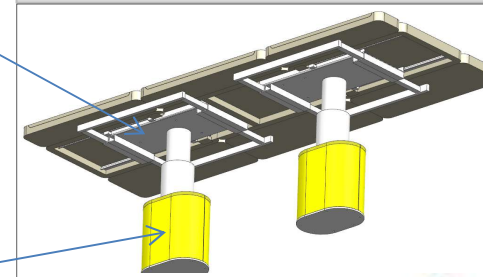
ELEMENTO DA MONTARE con:
 I01_SP01
 A01_SP01
 e spedire con un unico imballo

1/7 - L 600 x H 237 x sp 44 mm
 2/8 - L 600 x H 375 x sp 44 mm
 3/9 - L 600 x H 136 x sp 44 mm
 4 - L 640 x H 237 x sp 44 mm

5 - L 640 x H 375 x sp 44 mm
 6 - L 640 x H 280 x sp 44 mm
 10/11 - L 313 x H 695 x 25 mm
 12/13/14/15 - L 50 x H 38 x sp 15 mm

A01_SP01

I01_SP01

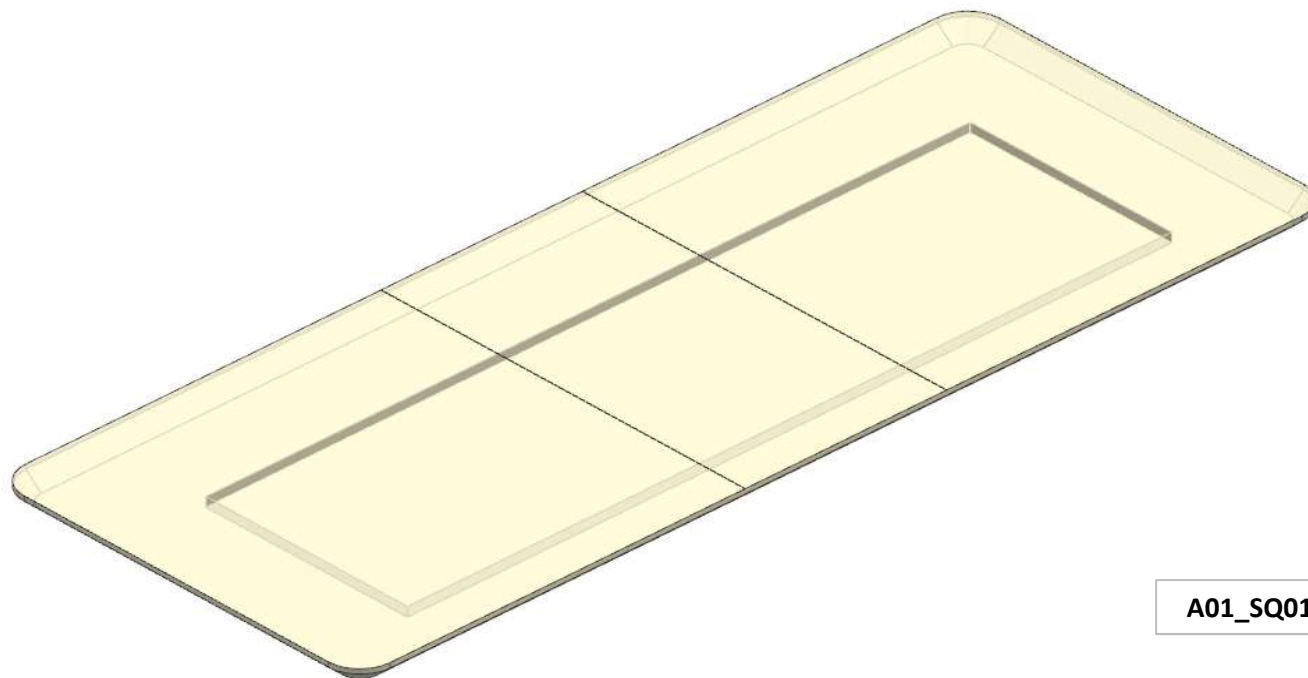


consonni&c

AZ68F

DA MAT. 201 REV. 29-04-2024

LOCALE	CODICE	DESCRIZIONE COMPONENTE	FINITURA	Q.TA	OPERATORE
SALONE	AZ68F-R01_SQ01	TAVOLO STANDARD	LASTRA CHIARA	1	Damiano



FERRAMENTA:

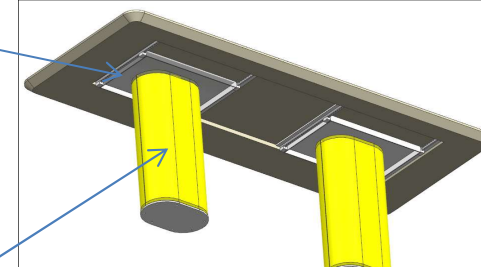
N° 12 - CALAMITE M/F PER CASSETTI
SUGATSUNE

1 - L 1840 x H 730 x sp 40 mm

ELEMENTO DA MONTARE con:
I01_SQ01
A01_SQ01
e spedire con un unico imballo

A01_SQ01

I01_SQ01

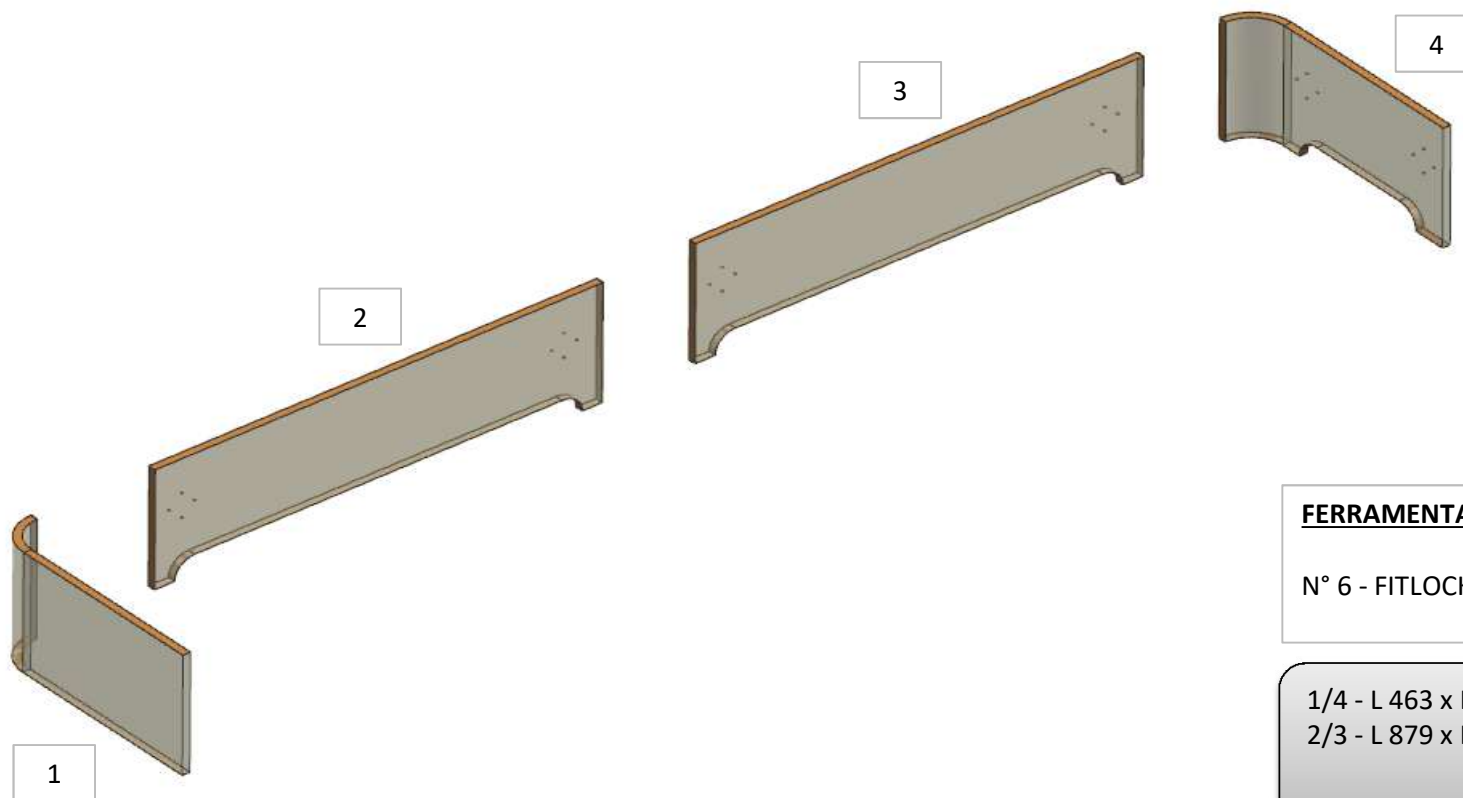


consonni&c

AZ68F

DA MAT. 201 REV. 29-04-2024

LOCALE	CODICE	DESCRIZIONE COMPONENTE	FINITURA	Q.TA	OPERATORE
SALONE	AZ68F-R01_SS01	STRUTTURA DIVANO	LASTRA CHIARA	4	Damiano



FERRAMENTA:

N° 6 - FITLOCK M/F

1/4 - L 463 x H 250 x sp 16mm

2/3 - L 879 x H 250 x sp 16mm