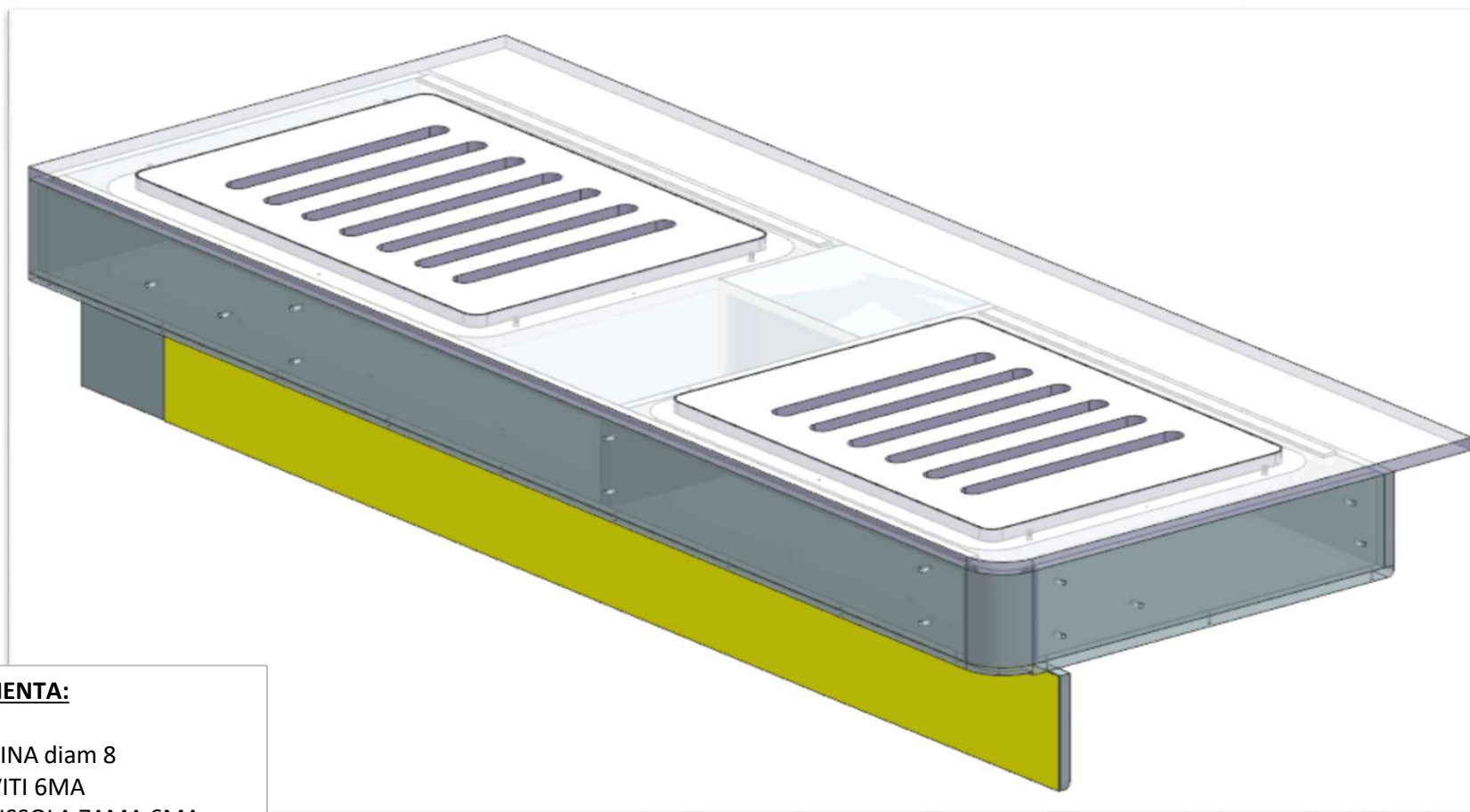


AZ26M

REV. GR 9

LOCALE	CODICE	DESCRIZIONE COMPONENTE	FINITURA	Q.TA	OPERATORE
CABINA OSPITI SX	AZ26M-MG_LG01	LETTO MURATA			Dante



FERRAMENTA:

N° 8 - SPINA diam 8

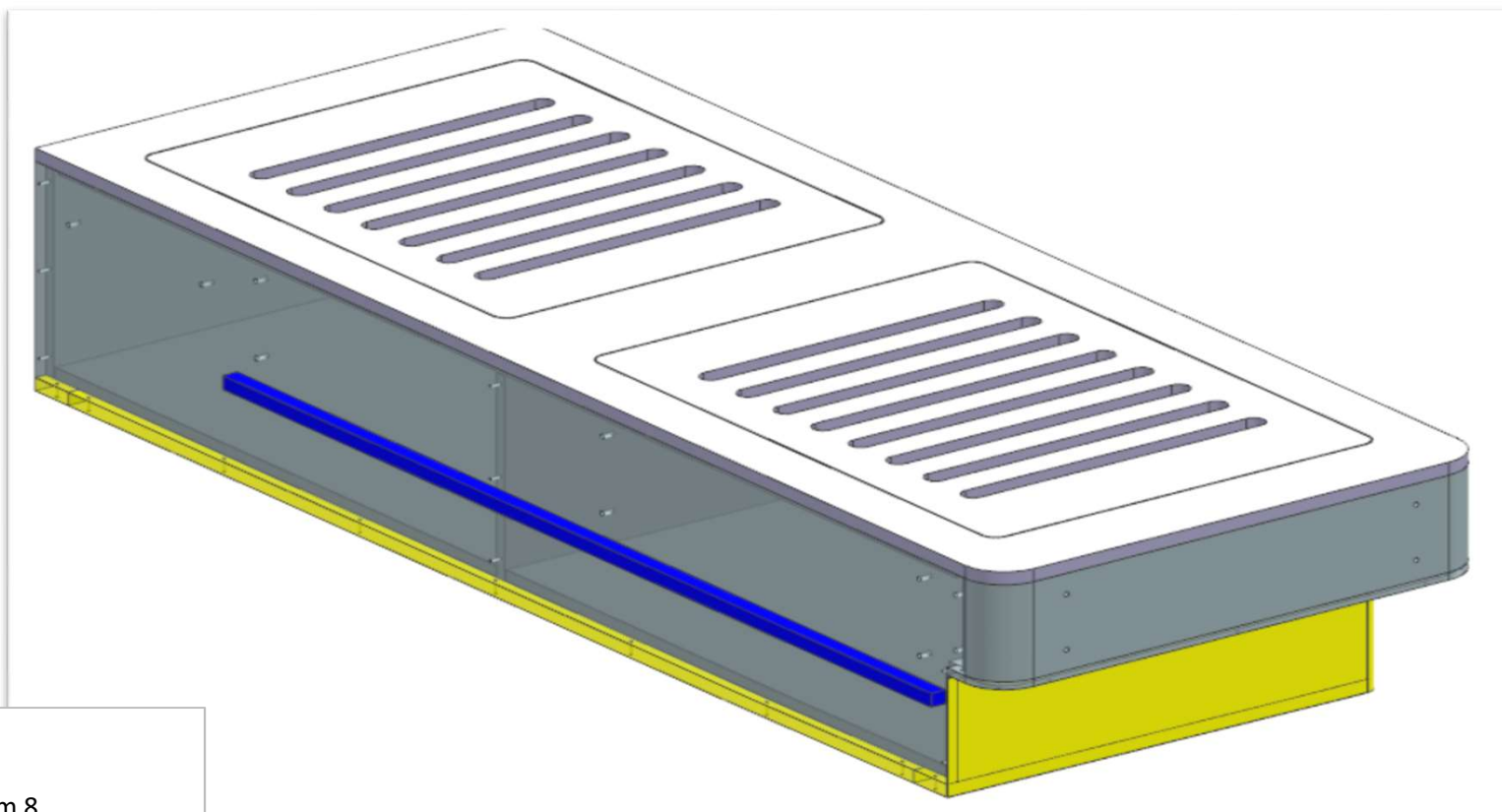
N° 15 - VITI 6MA

N° 9 - BUSSOLA ZAMA 6MA

AZ26M

REV. GR 9

LOCALE	CODICE	DESCRIZIONE COMPONENTE	FINITURA	Q.TA	OPERATORE
CABINA OSPITI SX	AZ26M-MG_LH01	LETTO CENTRO NAVE			Dante



FERRAMENTA:

N° 8 - SPINA diam 8

N° 24 - VITI 6MA

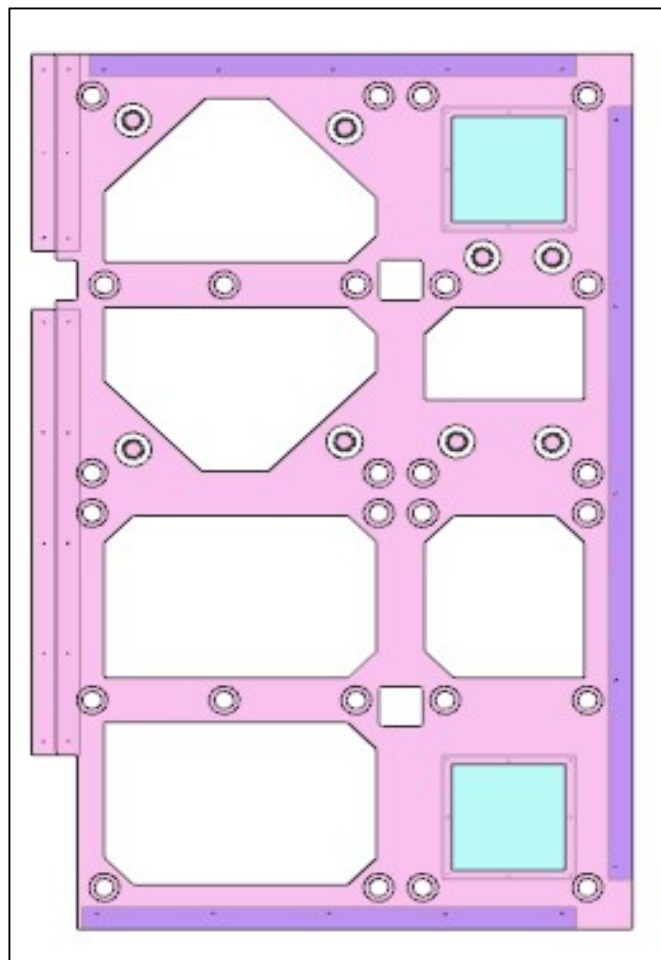
N° 18 - BUSSOLA ZAMA 6MA

AZ26M

MOD DA GR10

REV. GR 10

LOCALE	CODICE	DESCRIZIONE COMPONENTE	FINITURA	Q.TA	OPERATORE
CABINA OSPITI SX	AZ26M-MG_LM01	CIELINO			Damiano



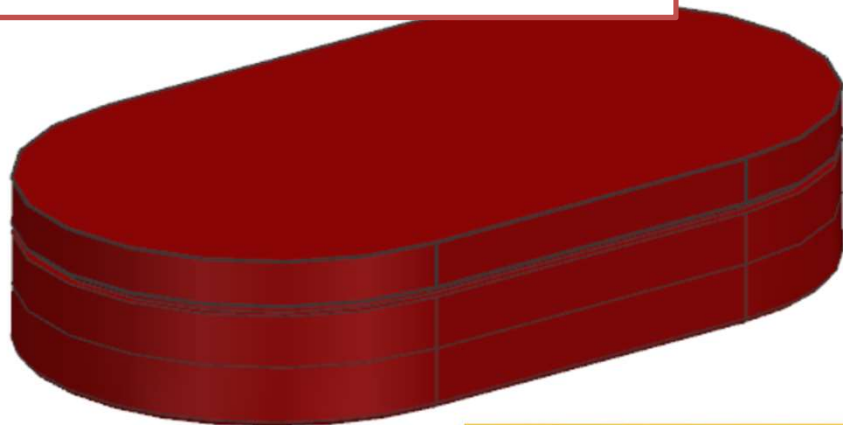
AZ26M

DA MAT. 11

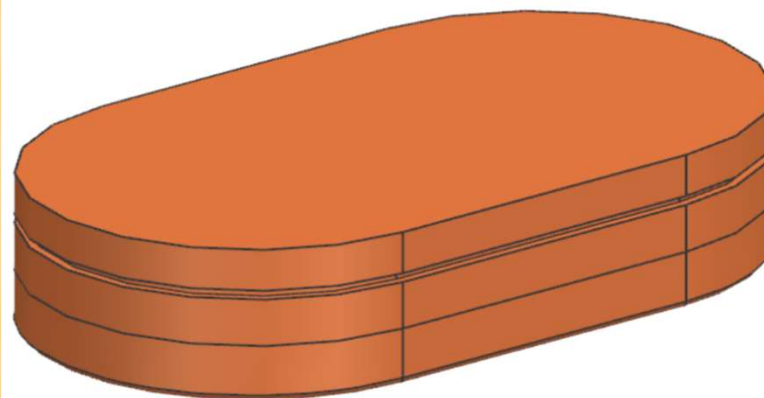
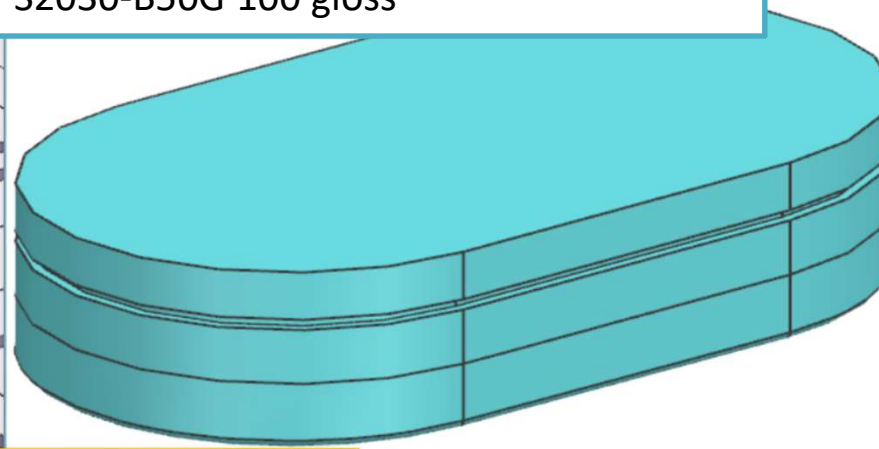
REV. GR 9

LOCALE	CODICE	DESCRIZIONE COMPONENTE	FINITURA	Q.TA	OPERATORE
CABINA OSPITI SX	AZ26M-MG_LO01	PORTAGIOIE COMODINO-OPT			Damiano

VERSIONE CAPRI: ROSSO - RAL 3003
100 gloss



VERSIONE RIVIERA: ACQUAMARINA - NCS
S2030-B50G 100 gloss



VERSIONE NEUTRA:
LACCATO BRONZO (DA