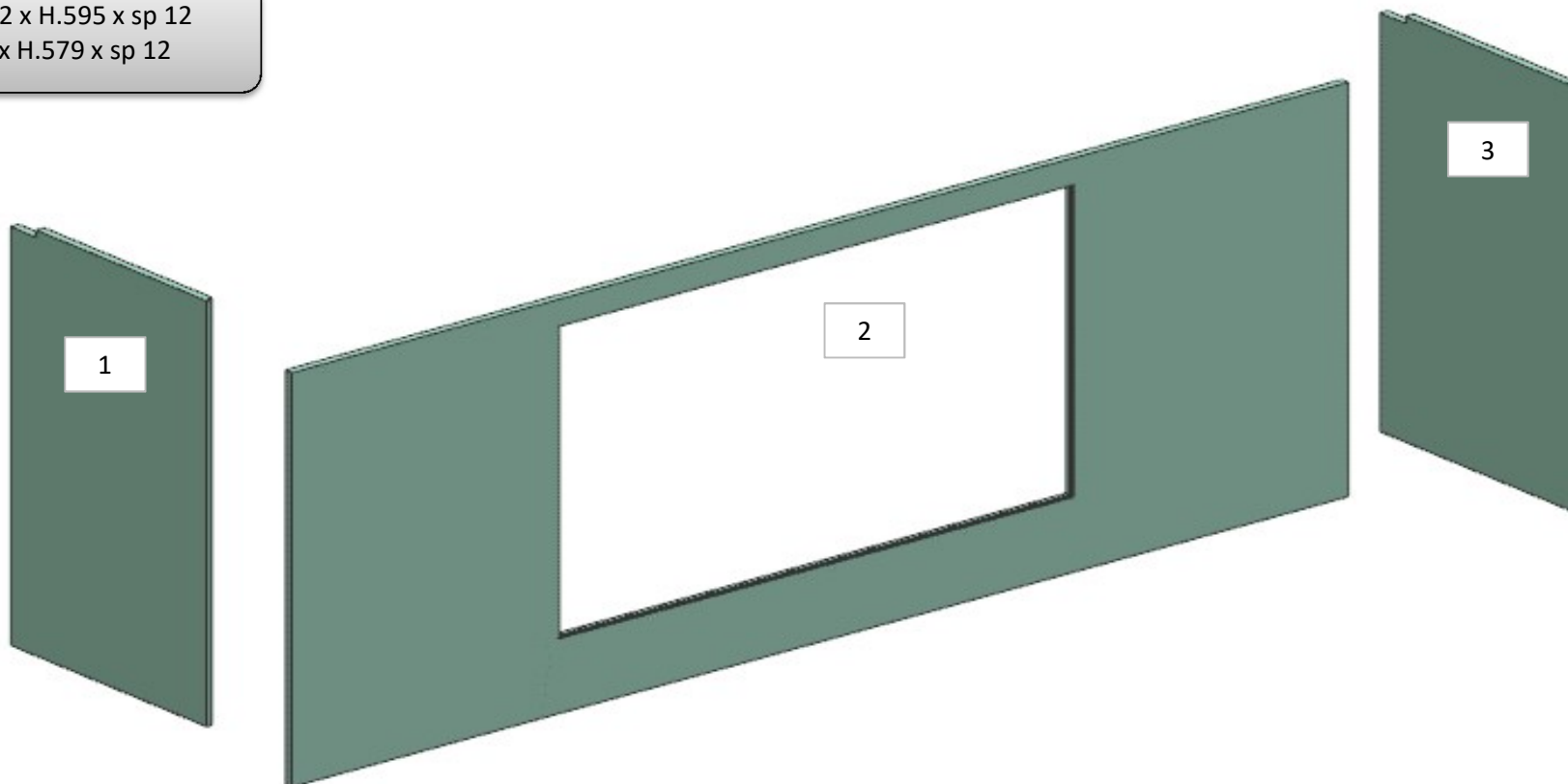


# AZ26M

REV. GR 9

LOCALE	CODICE	DESCRIZIONE COMPONENTE	FINITURA	Q.TA	OPERATORE
CUCINA	AZ26M-X01_KE01	RIV. MARMO POPPA	BETACRIL	3	Damiano

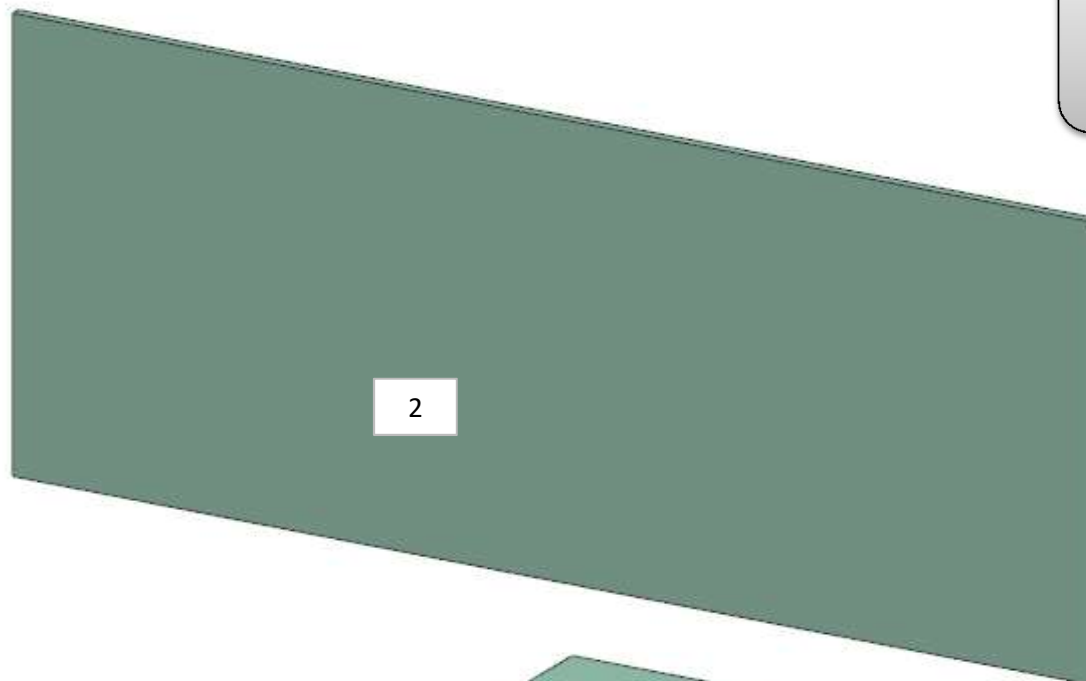
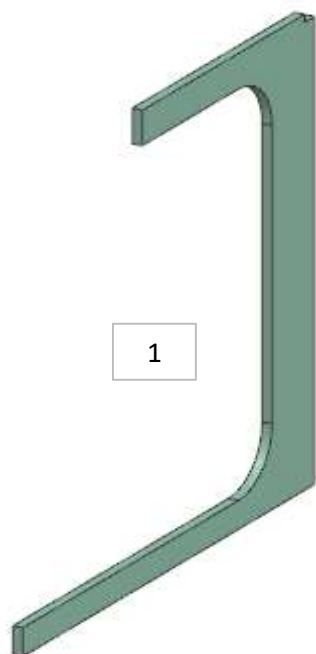
1 - 3 - L 362 x H.595 x sp 12  
2 - L 1587 x H.579 x sp 12



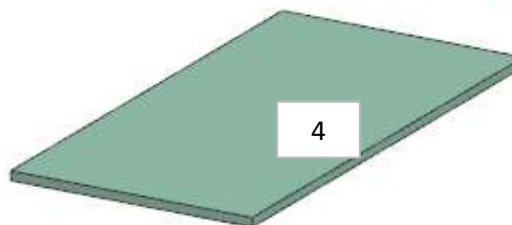
# AZ26M

REV. GR 9

LOCALE	CODICE	DESCRIZIONE COMPONENTE	FINITURA	Q.TA	OPERATORE
CUCINA	AZ26M-X01_KI01	RIV. MARMO PRUA	BETACRIL	4	Damiano



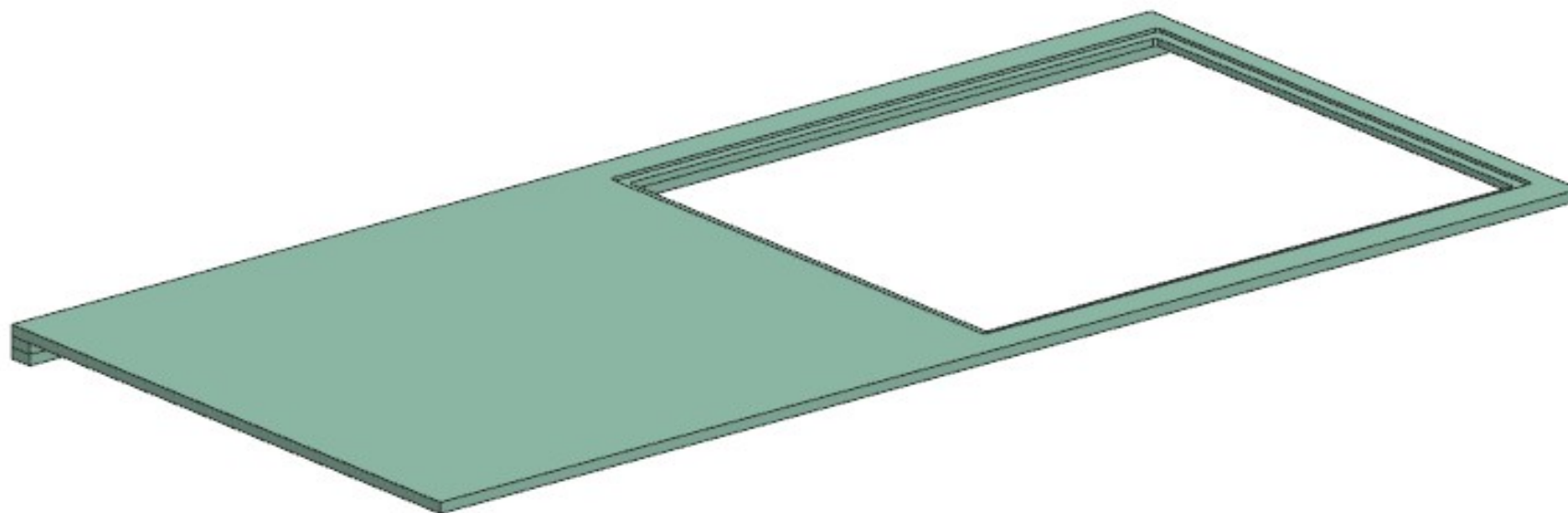
- 1 - L 612 x H.595 x sp 12
- 2 - L 1296 x H.579 x sp 12
- 3 - L 362 x H.595 x sp 12
- 4 - L 290 x H.570 x sp 12



# AZ26M

REV. GR 9

LOCALE	CODICE	DESCRIZIONE COMPONENTE	FINITURA	Q.TA	OPERATORE
CUCINA	AZ26M-X01_KKQ01	TOP BASE CUCINA PRUA 60 Var 1	BETACRIL	1	Damiano



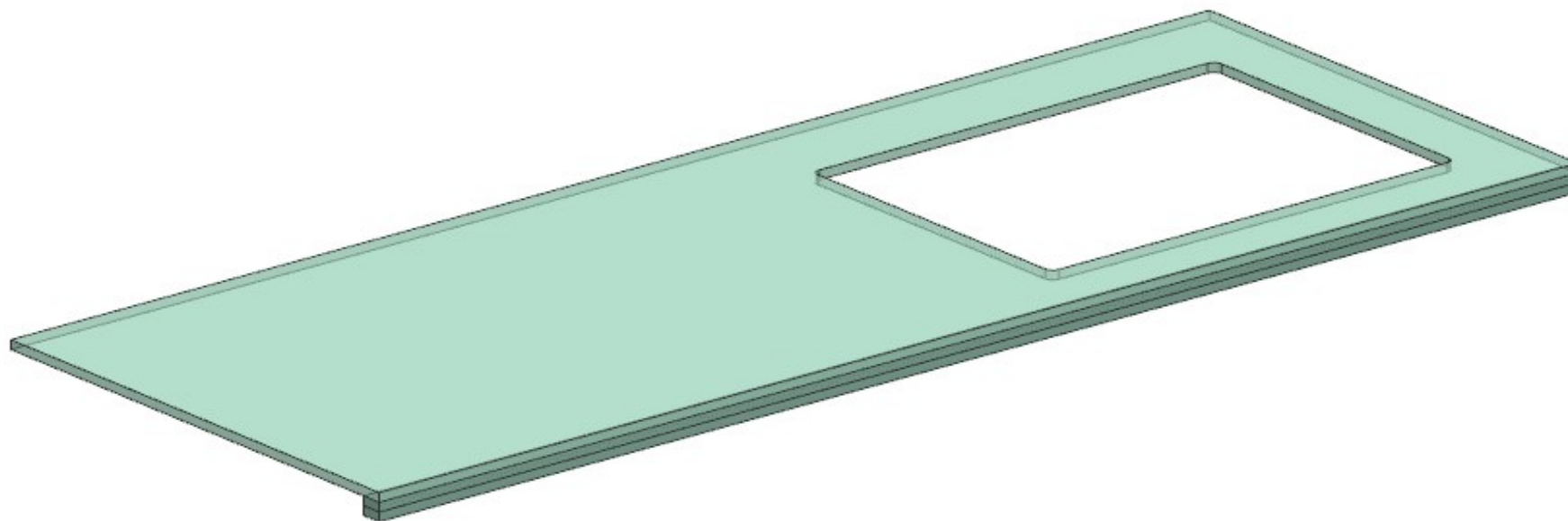
**consonni&c**

# AZ26M

REV. GR 9

LOCALE	CODICE	DESCRIZIONE COMPONENTE	FINITURA	Q.TA	OPERATORE
CUCINA	AZ26M-X01_KR01	TOP BASE CUCINA POPPA	BETACRIL	1	Damiano

1 -L 1589 x H 36 x 600



# AZ26M

REV. GR 9

LOCALE	CODICE	DESCRIZIONE COMPONENTE	FINITURA	Q.TA	OPERATORE
CUCINA	AZ26M-X01_KQ01	TOP BASE CUCINA PRUA 90 Var 2	BETACRIL	1	Damiano

1 -L 1296x H 36 x 599

