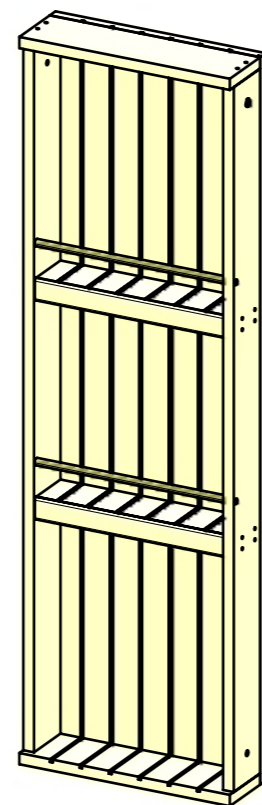
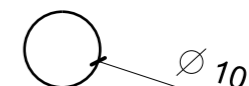
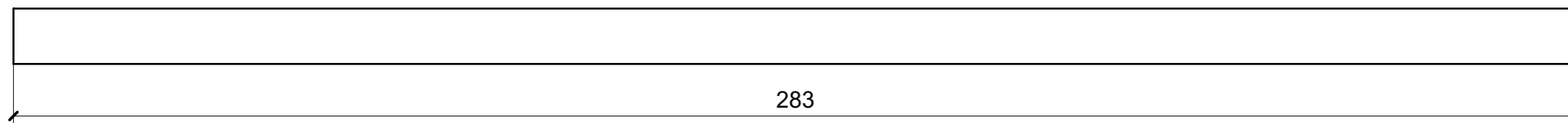
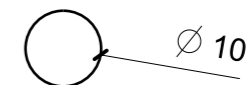
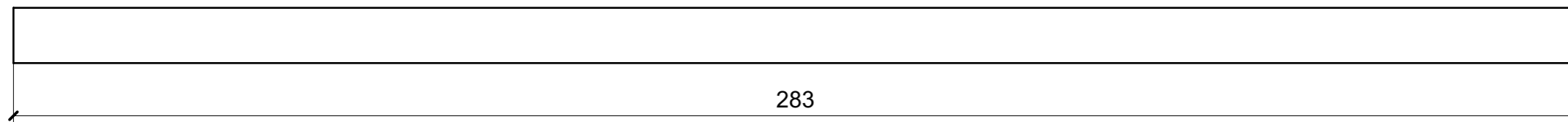
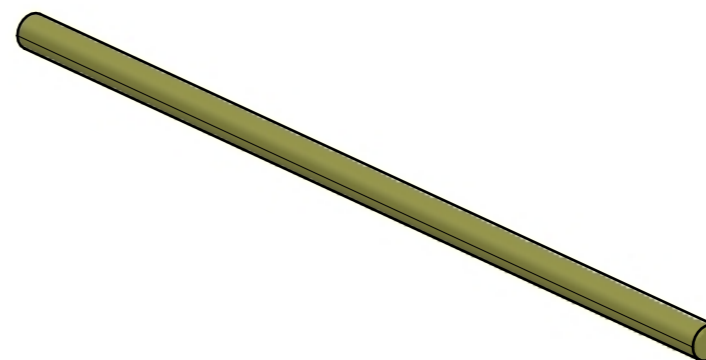
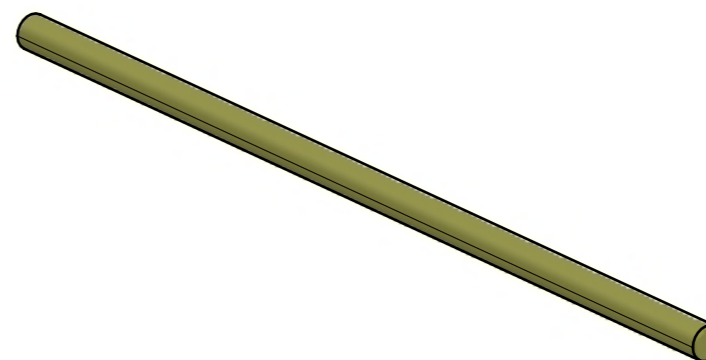


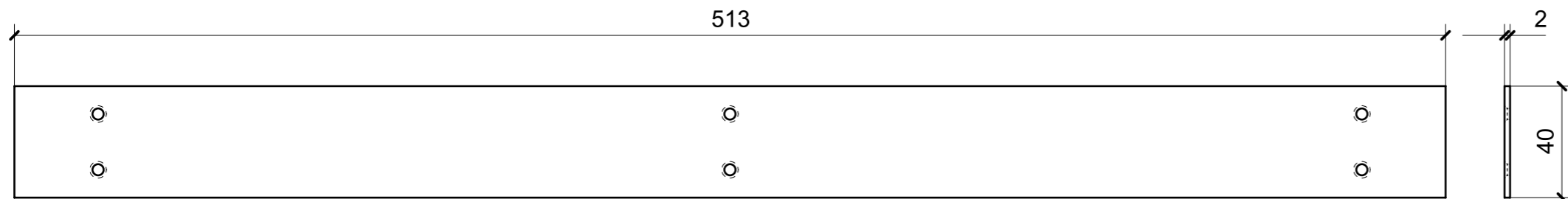
LOCALE	CODICE	DESCRIZIONE COMPONENTE	FINITURA	GR.
BAGNO ARMATORE	MD320_A27_WC01	MOBILE IN NICCHIA SOPRA LAVABO	ACCIAIO VERNICIATO BRONZO 88634	2



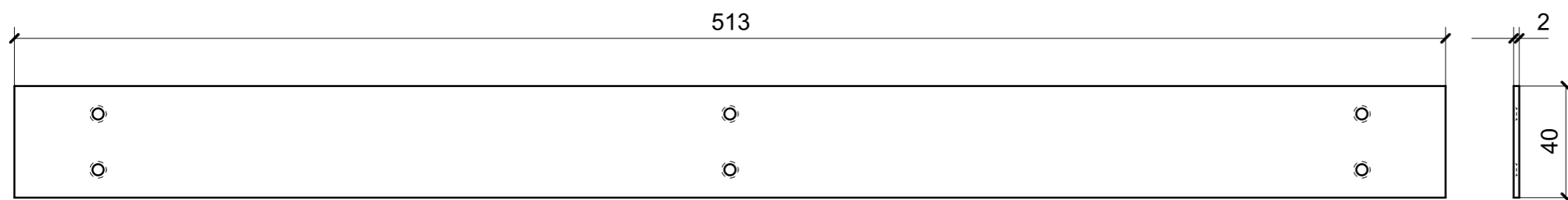
ELEMENTI DA MONTARE
in MF_WC01
e spedire con unico imblo



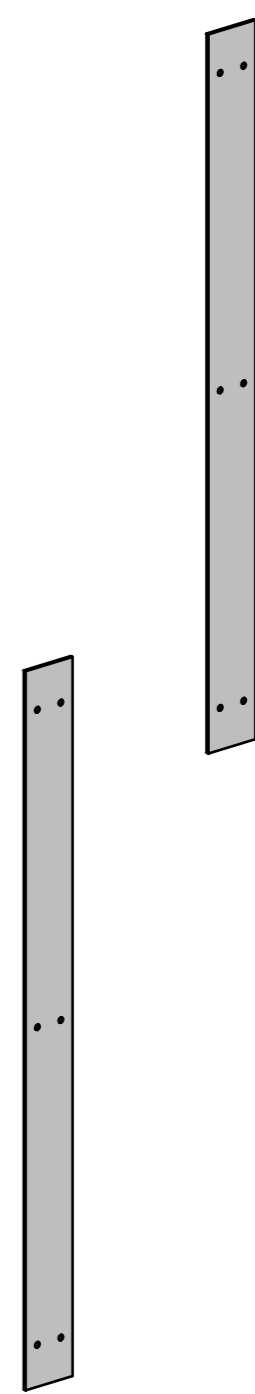
LOCALE	CODICE	DESCRIZIONE COMPONENTE	FINITURA	GR.
BAGNO ARMATORE	MD320_A10_WD01	PARETE MISCELATORI DOCCIA	ACCIAIO GREZZO	PTP



01



02



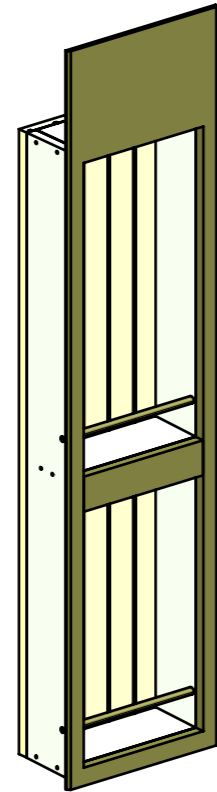
VERNICIATURA LASTRA/LACCATI:

● = FILI RASATI

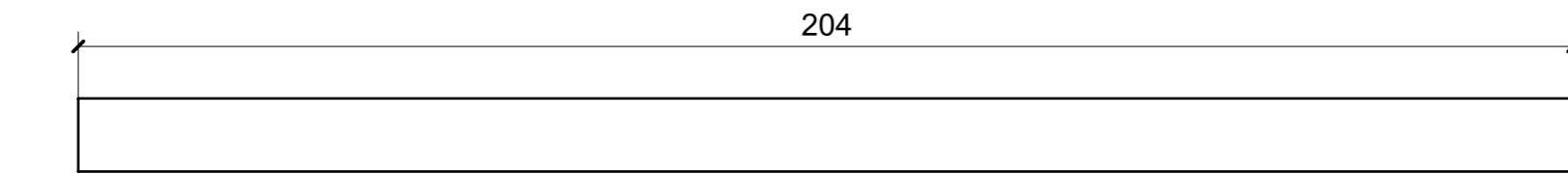
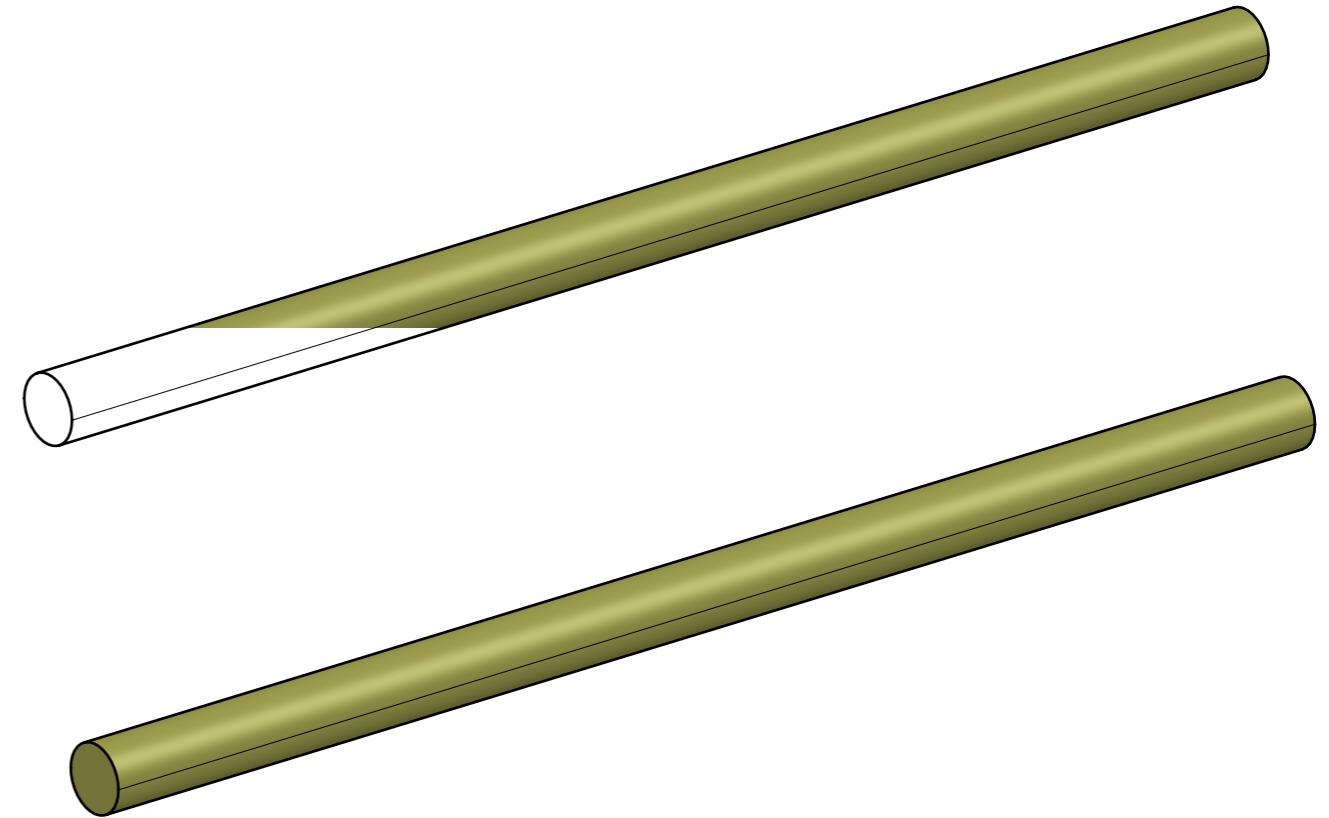
● = VERNICIARE 1 LATO + FILI RASATI O BORDATI

NESSUN SIMBOLO = VERNICIARE 2 LATI + FILI RASATI O BORDATI

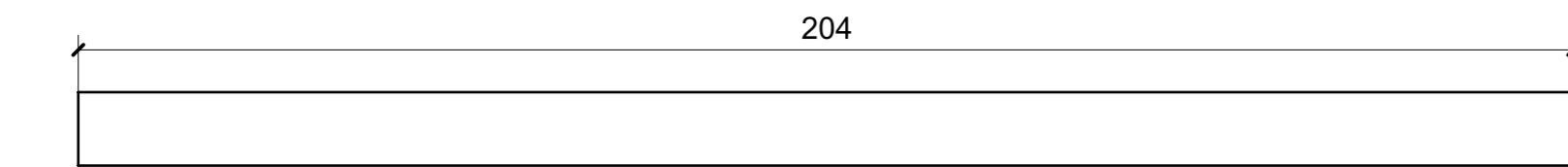
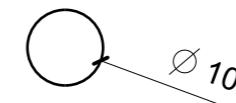
LOCALE	CODICE	DESCRIZIONE COMPONENTE	FINITURA	GR.
BAGNO ARMATORE	MD320_A07_WE01	SCATOLA CORPO MISCELATORI	ACCIAIO VERNICIATO DARK BRONZE 88634	PTP



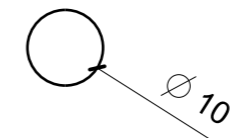
ELEMENTI DA MONTARE
in MF_WE01
e spedire con unico imballo



01



02



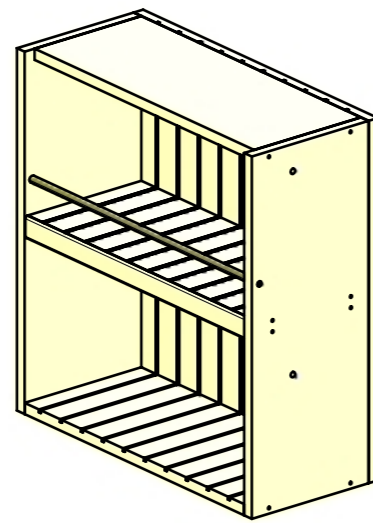
VERNICIATURA LASTRA/LACCATI:

● = FILI RASATI

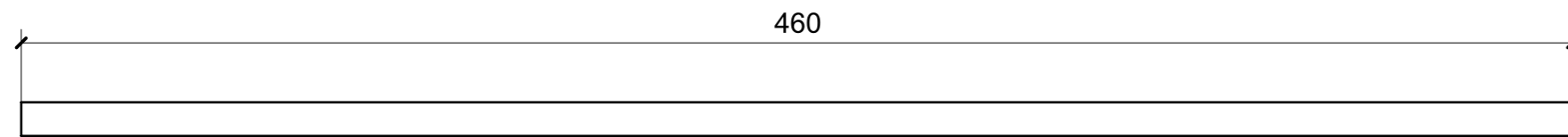
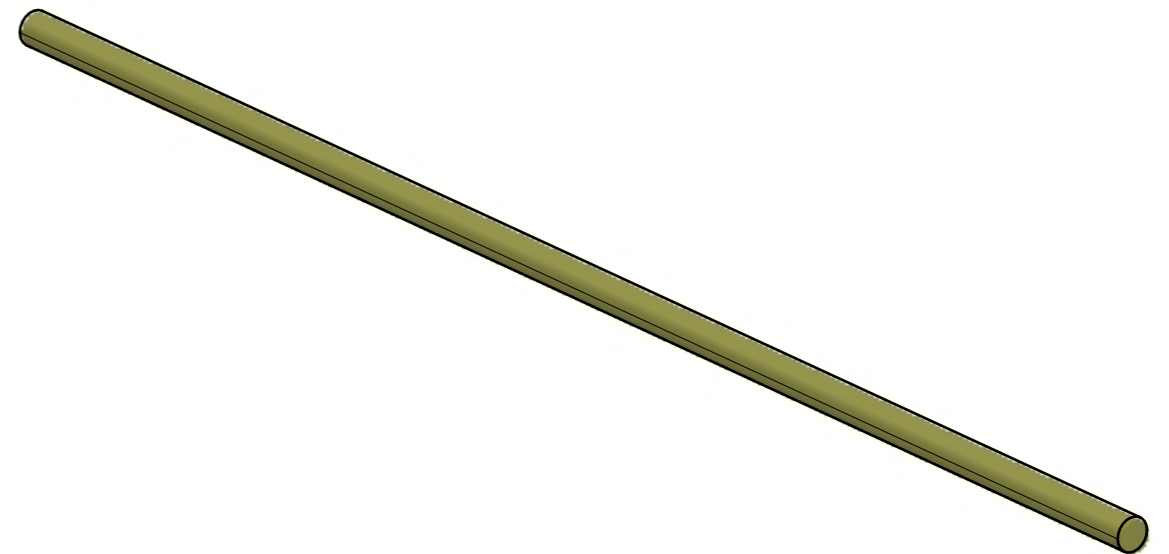
● = VERNICIARE 1 LATO + FILI RASATI O BORDATI

NESSUN SIMBOLO = VERNICIARE 2 LATI + FILI RASATI O BORDATI

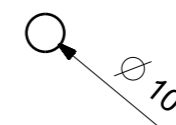
LOCALE	CODICE	DESCRIZIONE COMPONENTE	FINITURA	GR.
BAGNO ARMATORE	MD320_A21_WH01	PARETE NICCHIA WATER	ACCIAIO VERNICIATO BRONZO 88634	2



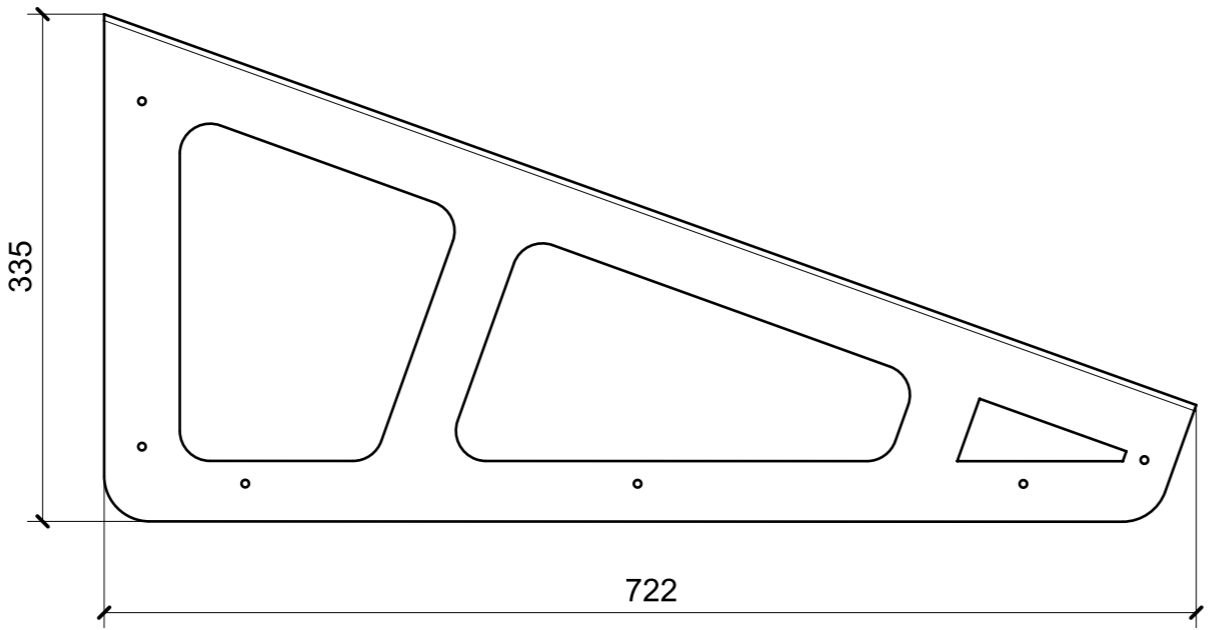
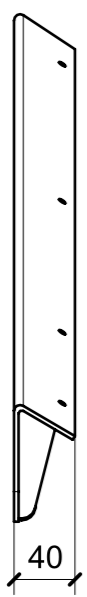
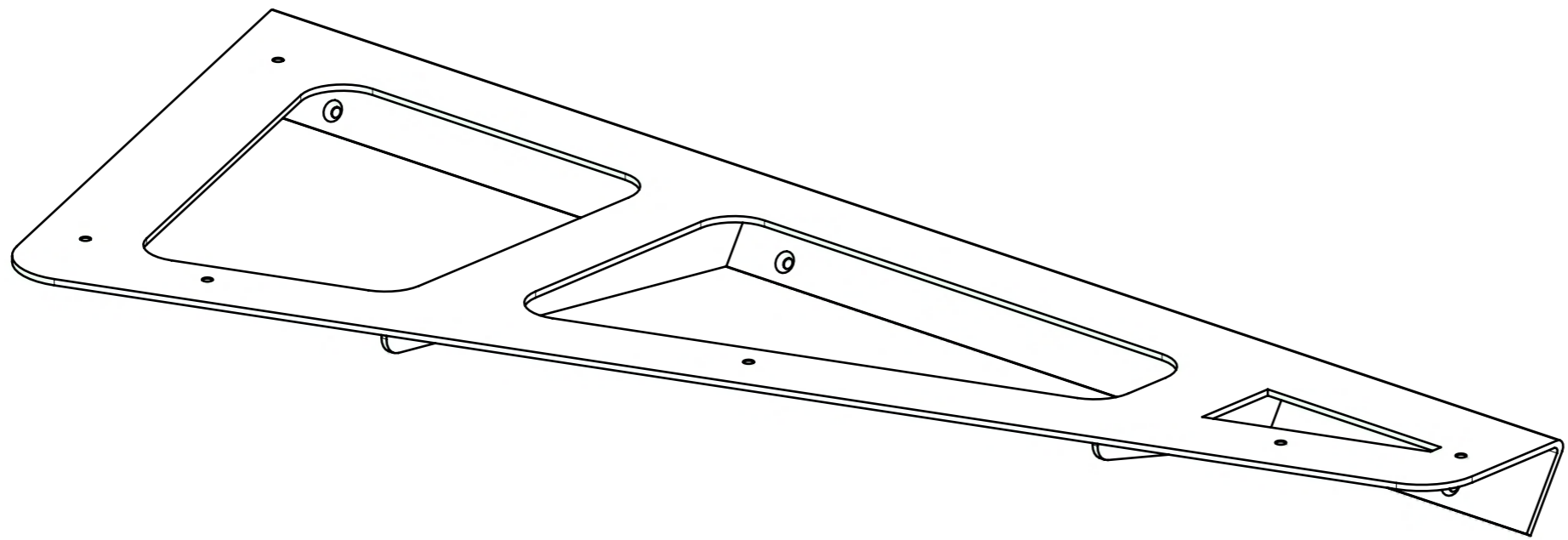
ELEMENTO DA MONTARE
in MF_WH01
e spedire con unico imballo



01

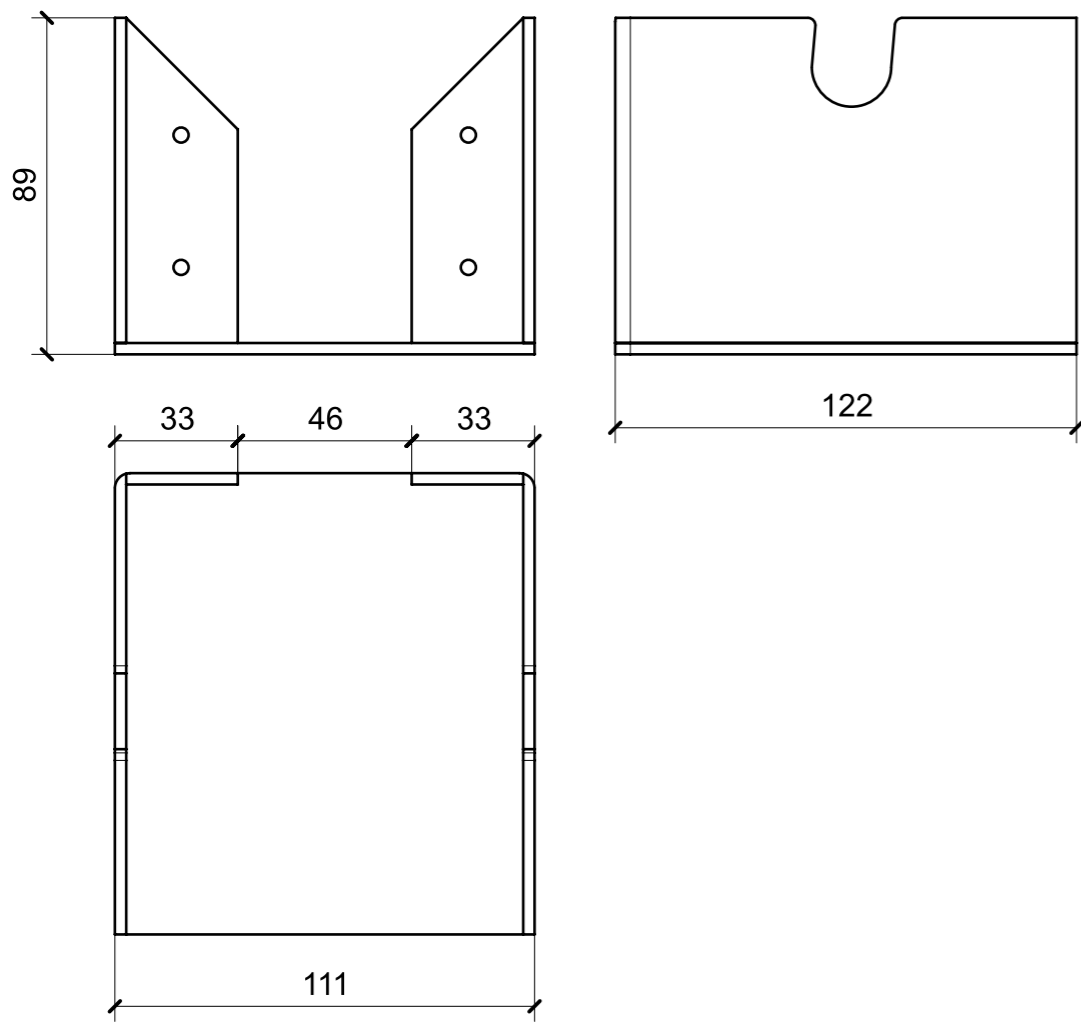


LOCALE	CODICE	DESCRIZIONE COMPONENTE	FINITURA	GR.
BAGNO ARMATORE	MD320_A18_WN01	SEDUTA DOCCIA	ACCIAIO GREZZO	2

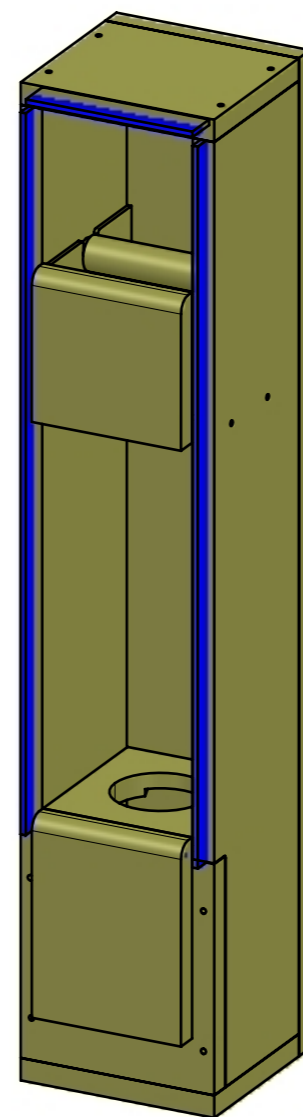
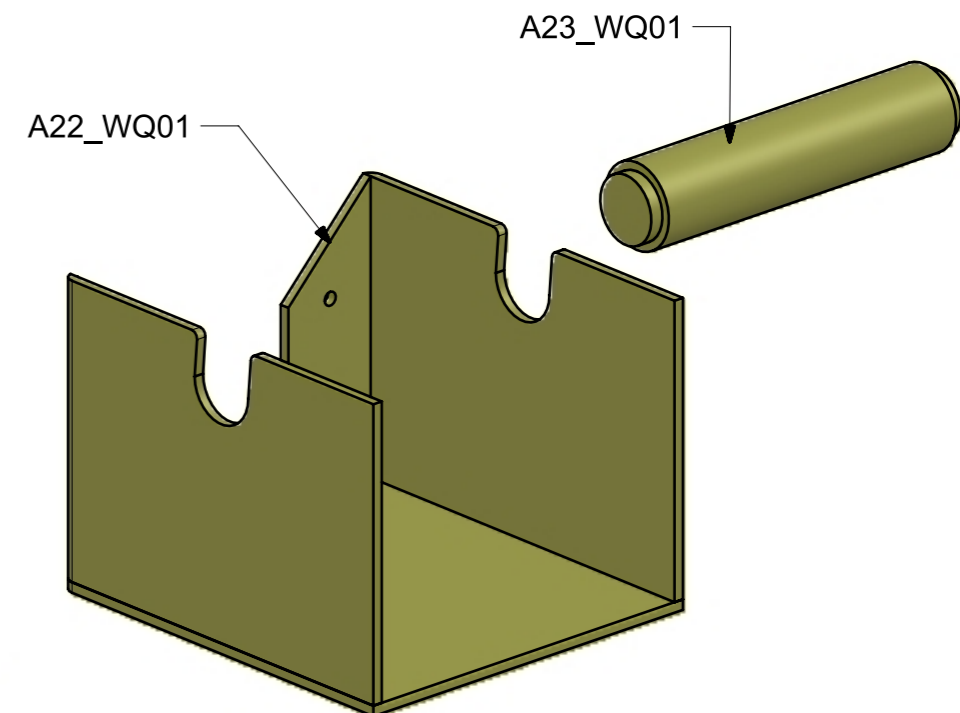
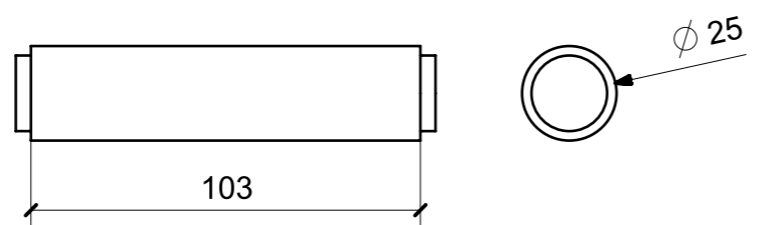


LOCALE	CODICE	DESCRIZIONE COMPONENTE	FINITURA	GR.
BAGNO ARMATORE	MD320_A01_WQ01	PORTA SCOPINO	ACCIAIO VERNICIATO DARK BRONZE 88634	2

A22_WQ01



A23_WQ01



←
ELEMENTI DA MONTARE
in MF_WQ01
e spedire con unico imballo

VERNICIATURA LASTRA/LACCATI:

● = FILI RASATI

● = VERNICIARE 1 LATO + FILI RASATI O BORDATI

NESSUN SIMBOLO = VERNICIARE 2 LATI + FILI RASATI O BORDATI