

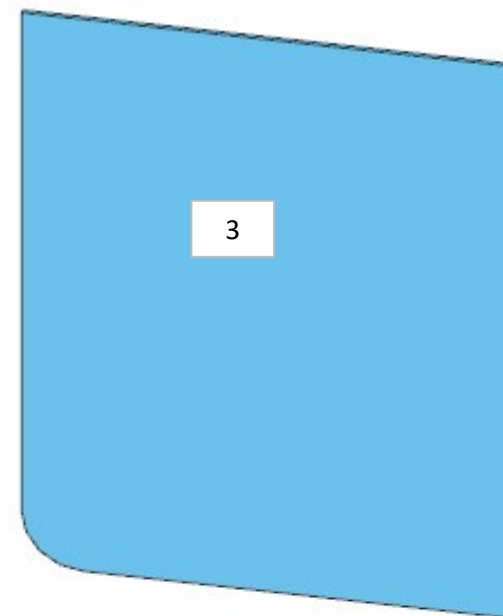
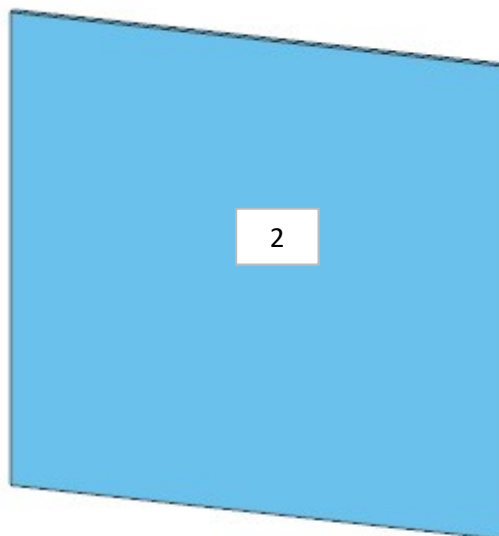
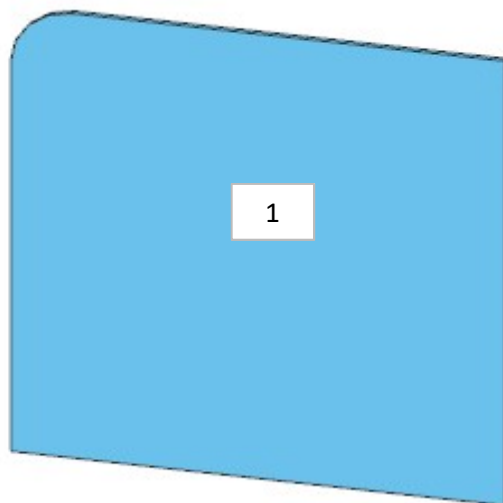
AZ26M

REV. MAT.37

| LOCALE | CODICE | DESCRIZIONE COMPONENTE | FINITURA | Q.TA | OPERATORE |
|--------------|------------------|-------------------------|---------------|------|-----------|
| BAGNO VIP SX | AZ26M-S01_JJN01a | NICCHIA LATERALE LAVABO | SPECCHIO 4 mm | 3 | Damiano |

- 1 - L. 266,7 x H 274,3 x sp 4
- 2 - L. 266,7 x H 293 x sp 4
- 3 - L. 266,7 x H 340,8 x sp 4

**AGGIUNTO
SPECCHI**



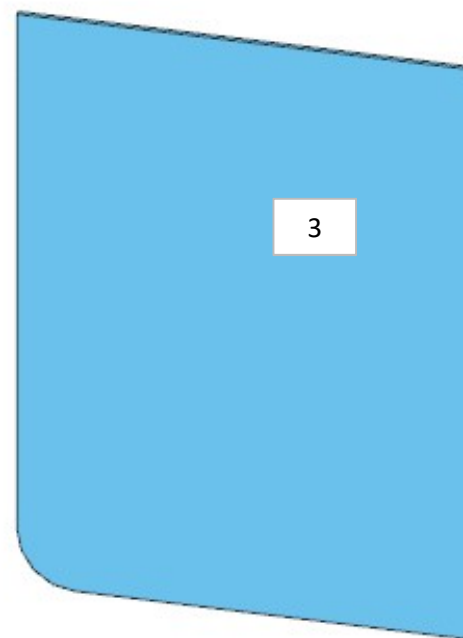
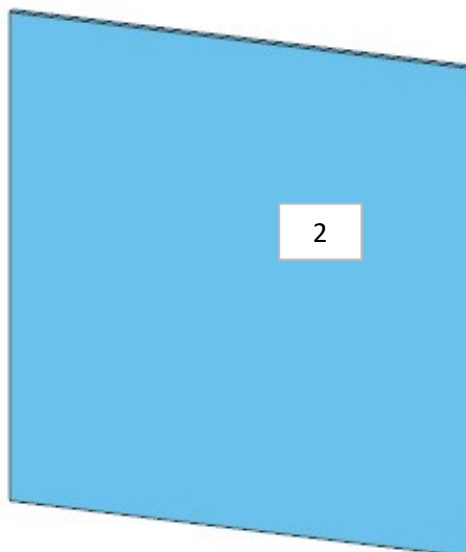
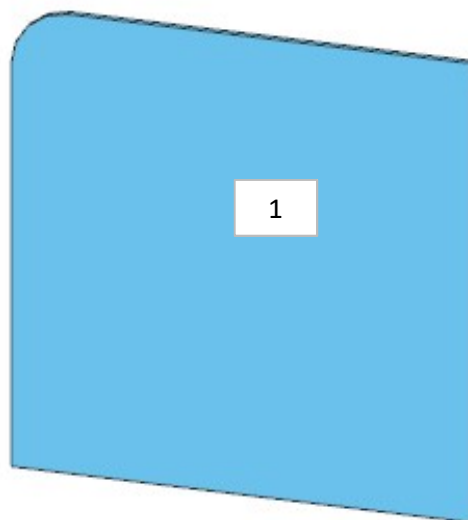
AZ26M

REV. MAT.37

| LOCALE | CODICE | DESCRIZIONE COMPONENTE | FINITURA | Q.TA | OPERATORE |
|--------------|------------------|-------------------------|---------------|------|-----------|
| BAGNO VIP SX | AZ26M-S01_JJN01b | NICCHIA LATERALE LAVABO | SPECCHIO 4 mm | 3 | Damiano |

- 1 - L. 266,7 x H 274,3 x sp 4
- 2 - L. 266,7 x H 293 x sp 4
- 3 - L. 266,7 x H 340,8 x sp 4

**AGGIUNTO
SPECCHI**



AZ26M

REV. GR 10

| LOCALE | CODICE | DESCRIZIONE COMPONENTE | FINITURA | Q.TA | OPERATORE |
|--------------|-----------------|------------------------|---------------|------|-----------|
| BAGNO VIP SX | AZ26M-S01_JJO01 | SPECCHIO BAGNO | SPECCHIO 4 mm | 1 | Damiano |

1 - L.1012 x H 875 x sp 4

